

Product datasheet for RC230711

SBNO1 (NM_001167856) Human Tagged ORF Clone

Product data:

Product Type: Expression Plasmids
Product Name: SBNO1 (NM_001167856) Human Tagged ORF Clone
Tag: Myc-DDK
Symbol: SBNO1
Synonyms: MOP3; Sno
Vector: pCMV6-Entry (PS100001)
E. coli Selection: Kanamycin (25 ug/mL)
Cell Selection: Neomycin
ORF Nucleotide Sequence: >RC230711 representing NM_001167856
Red=Cloning site Blue=ORF Green=Tags(s)

TTTTGTAATACGACTCACTATAGGGCGCCGGAATTCGTCGACTGGATCCGGTACCGAGGAGATCTGCC
GCC**CGATCGCC**

ATGGTGGAGCCAGGGCAAGATTTACTGCTTGCTGCTTTGAGTGAGAGTGGAAATTAGTCCGAATGACCTCT
TTGATATTGATGGTGGAGATGCAGGGCTTGCAACTCCAATGCCTACCCCGTCAGTTCAGCAGTCAGTGCC
ACTTAGTGCATTAGAAGTGGAGACCGAAGCAGCAGTTCCTGTTAAACAAGAACCAGAGACTGTA
CCTACTCCAGCACTATTAATGTGAGGCAGCAGCTCCATCTACTACAACATTTGTGCTGAATCAAATAA
ATCATCTTCCACCCTTGGGATCTACAATTGTAATGACTAAAAACCCACCTGTAACAACCAACAGGCAAAAC
CATCACTTTAACTAAGTTTATCCAGACTACTGCAAGCACACGCCCGTCAGTCTCAGCACCAACAGTACGA
AATGCCATGACCTCTGCACCTTCAAAGACCAAGTTCAGCTTAAAGATCTACTGAAAAATAATAGTCTTA
ATGAAGTATGAAACTAAAGCCACCTGCTAATATTGCTCAGCCAGTAGCAACAGCAGCTACTGATGTAAG
CAATGGTACAGTAAAGAAAGAGTCTTCTAATAAAGAAGGAGCTAGAATGTGGATAAACGACATGAAGATG
AGGAGTTTTTCCCAACCATGAAGTTCCTGTTGTAAGAAGATGATGAACCAGAGGAAGATGAAG
AAGAAATGGGTGATGCAGAAACCTATGCAGAATACATGCCAATAAAATTAATAAATGGCCTACGTCATCC
AGATGCTGTAGTGAAACAGCTCTTATCCAGTGTACTCCTCCTGATGTTGGTACAAAAACATCCATT
TCTGAGGAAACCATTTGATAATGGCTGGTTATCAGCATTGAGCTTGGGCAATTACATATGCAGCCAGC
AACATGAAACTTTCCTACCTAATGGAGATCGTGCCTGGCTTCTTAATAGGTGATGGTGCCGGTGTAGGAAA
AGGAAGGACGATAGCAGGAATCATCTATGAAAATTTTGTGAGTAGAAAACGAGCATTGTGGTTTGTG
GTTTCAAATGACTTAAAGTATGATGCTGAAAGAGATTTAAGGGATATTGGAGCAAAAAACATTTTGGTTC
ATTCGTTAAATAAGTTTAAATACGGAAAAATTTCTTCAAACATAATGGGAGTGTAAAAAGGGTGTAT
TTTTGCTACTTACTCTTCACTTATTGGTAAAGCCAGTCTGGCGCAAGTATAAACTAGGTTAAAAACA
CTTCTGCATTGGTGCCGTGATGACTTCGATGGAGTGATAGTGTGATGAGTGTCATAAAGCCAAAAACT
TATGTCCTGTTGGTTCTTCAAAGCAACCAAGACAGGCTTAGCAGTTTTAGAGCTTCAGAACAAATTGCC
AAAAGCCAGAGTTGTTTATGCTAGTGCAACTGGTCTTGAACCACGCAACATGGCCTATATGAACCGT
CTTGGCATATGGGGTGGGGTACTCCATTTAGAGAATTCAGTGATTTTATCAAGCAGTAGAACGGAGAG



[View online >](#)

GAGTTGGTGCATGAAAATAGTTGCTATGGATATGAAGCTTAGAGGAATGTACATTGCTCGACAACCTGAG
CTTTACTGGAGTGACCTTCAAAATTGAGGAAGTCTTCTTTCTCAGAGCTACGTTAAAATGTATAACAAA
GCTGTCAAGCTGTGGGTTCATCGCCAGAGAGCGTTTCAGCAAGCTGCAGATCTGATTGATGCTGAGCAAC
GAATGAAGAAGTCCATGTGGGGTTCAGTTCTGGTCTGCTCACCAGAGGTTCTTCAAATACTTATGCATAGC
ATCCAAAGTTAAAAGGGTGTGCAACTAGCTCGAGAGGAAATCAAGAATGGAAAATGTGTTGTAATTGGT
CTGCAGTCTACAGGAGAAGCTAGAACATTAGAAGCTTTGGAAGAGGGCGGGGAGAAATGAATGATTTTTG
TTTCAACTGCCAAAGGTGTGTTGCAGTCACTCATTGAAAAACATTTTCTGCTCCAGACAGGAAAAAAT
TTATAGTTTACTAGGAATCGATTTGACAGCTCCAAGTAACAACAGTTCCGCAAGAGATAGTCTTGTAAA
GAAAAATAAATAAAGAAGCGAAAAGGTGAAGAAAATAACTCGAGAAGCCAAAAAGCACGAAAAGTAGGTG
GCCTTACTGGTAGCAGTTCTGACGACAGTGGAAGTGAATCTGATGCCTCTGATAATGAAGAAAAGTACTA
TGAGAGCTCTAAAAACATGAGTTCTGGAGATGATGACGATTTCAACCCATTTTTAGATGAGTCTAATGAG
GATGATGAAAATGATCCCTGGTTAATTAGAAAAGACCACAAGAAAAACAAAGAGAAAAAAGAAGAAAA
GTATAGATCCAGATTCTATTCAAAGTGCCTTATTAGCATCAGGTCTTGGATCAAAACGACCTAGTTTTTC
ATCTACACCAGTTATCTCACCTGCTCTAACAGTACACCAGCTAACAGTAACACCAACAGTAACAGTAGC
CTTATAACAAGTCAGGATGCTGTGAAAAGGGCTCAGCAGATGAAGAAAGACCTGCTTGATAAGCTAGAAA
AATTAGCTGAAGACCTCCCCCTAATACCTGGATGAACCTTATCGATGAACCTTGGTGGCCCTGAGAACGT
TGCTGAGATGACTGGCCCAAGGACGGGTTGTGAGCAATGATGATGGAAGCATATCTTATGAGTCAAGA
TCTGAACCTGATGTGCCTGTGGAATACTAAACATCACAGAAAAACAACGATTTATGGATGGAGATAAGA
ATATTGCTATCATCTCAGAAGCTGCCAGCTCGGGTATTTTACATTACAAGCAGATAGGAGAGCTAAAAATCA
AAGGCGAAGAGTTCATATGACTTTAGAATTACCTTGGAGCGCTGATAGAGCAATTAACAGTTCCGGACGT
ACTCATAGATCAAACCAAGTTACTGCTCCTGAGTATGCTTTCTGATATCTGAACTGGCAGGAGAACAAA
GATTTGCATCTATTGTTGCTAAAAGACTGAGAGTTTGGGGCACTTACACATGGTGATAGAAGGGCAAC
AGAACTAGAGATCTGAGCAGTTCAACTTTGATAATAAGTATGGAAGAAATGCTTTAGAAATGTCTATG
AAATCCATTGTAAACTTGGATTTCCTATGGTATCACCACCTCCAGACTATCCTGGAGAATTTTTTAAAG
ATGTTGCAACAAGACTGATAGGCGTTGGCTGATAAATGTAGAAGATCGCTCGGGAATTTACTCTCGA
TAAAGATTATAACAACATAGGAAAATCTTAAATAGAATTTTAGGCATGGAGGTGCATCAGCAGAAATGCG
TTATTTTCAAGTATTTTGGGACACACTTACTGCAGTTGTTCAAAATGCCAAAAAATGGAAGATATGATA
TGGGAATCTTAGATCTTGGTCTGGAGATGAAAAAGTGGGAAAAGTATGTTAAAAAGTTTCTGACTCC
AGGATATTCAACCTCTGGCCACGTAGAATTATACACAATTAGTGTAGAGAGGGGAATGCATGGGAGGAA
GCTACCAAGATTTGGGCTGAGCTGACAGGACCAGACGATGGCTTTTACTTGTCTTGAATAAGGAACA
ACAAGAAAACGCCATCTTAGTTAAAGAAGTGAATCCTAAAAAGAACTTTTCTAGTTTATCGACCAAA
TACTGGGAAGCAGCTCAAATTAGAAATTTATGCTGATCTAAAAAAGAAATATAAGAAGGTCGTCTCAGAT
GATGCCCTGATGCACTGGTTAGATCAGTATAATTCATCTGCAGATACTTGTACTCATGCTTATTGGCGCG
GCAATTGCAAAAAAGCAAGCTTGGGGCTAGTTTGTGAAATAGGTCTTCGTTGCCGTACATATTATGTATT
ATGTGGTTCAGTGTGAGTGTCTGGACAAAAGTTGAGGGTGTCTAGCATCTGTCAGTGGCACAACCGTG
AAGATGCAGATCGTGGGCTAAGAACGGAAGATGGGCAACGGATTGTAGGTTTGTATTCCTCCGGCAAT
GTGTGTCTCCTCTGTAATCTCCTATCAACTTCAGACAGTCTCAACAGCTTGGGTCACACAGAAACA
GCTATGGCAACAGCATCACCTCAGAGCATCACCACCTTGGCAACGCA

ACGCGTACGCGGCGCTCGAGCAGAACTCATCTCAGAAGAGGATCTGGCAGCAAATGATATCCTGGATT
ACAAGGATGACGACGAT AAGGTTTAA

Protein Sequence: >RC230711 representing NM_001167856
 Red=Cloning site Green=Tags(s)

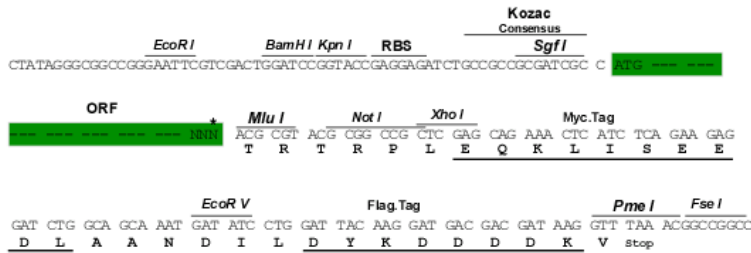
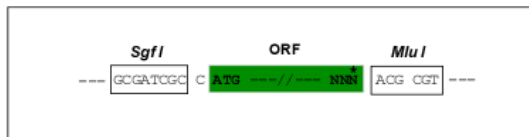
MVEPGQDLLLAALSEGISPNLFDIDGGDAGLATPMPTPSVQQSVPLSALELGLTEAAVPVKQEPETV
 PTPALLNVRQPPSTTTFLNQNHLPLPGSTIVMTKTPPVTTNRQTITLTKFIQTTASTRPSVSAPT
 NAMTSAPSKDQVQLKDLLKNSLNELMKLKPPANIAQPVATAATDVSNGTVKKESSNKEGARMWINDMKM
 RSFSPTMKVPVVKEDDEPEEEDEEMGHAETAYAEYMPIKLIKIGLRHPDAVVETSSLSSVTPPDVWYKTSI
 SEETIDNGWLSALQLEAITYAAQHQHETFLPNGDRAGFLIGDGAGVGKGRTIAGIYENYLLSRKRALWFS
 VSNDLKYDAERDLRDIGAKNILVHSLNKFYKGISSKHNGSVKKGVIIFATYSSLIGESQSGGKYKTRLKQ
 LLHWCGDDFDGVI VFDCHKAKNLCPVGS SKPTKTGLAVLELQNKLPKARVYASATGASEPRN MAYMNR
 LGIWGEGTPREFSDFIQAVERRGVGAMEIVAMDMLRGM YIARQLSFTGVTFKIEEVL LSQSYVKMYNK
 AVKLWVIARERFQQAADLIDAEQRMKMSMWGQFWSAHQRFFKYL CIAASKVKRVVQLAREEIKNGKCVVIG
 LQSTGEARTLEALEEGGELNDFVSTAKGVLQSLIEKHFAPDRKKLYSLLGIDL TAPSNSSPRDSPCK
 ENKIKRKGEEITREAKKARKVGLTGSSDSDSGESDASDNEESDYESSKNMSSGDDDDFNPFDESNE
 DDENDPWLIRKDHKNKEK KKKKSIDPDSIQSALLASGLGSKRPSFSSTPVI SPAPNSTPANSNTNSNS
 LITSQDAVERAQQMKDLLDKLEKLAEDLPPNTLDELIDELGGPENVAEMTGRKGRVVSNDGSIYESR
 SELDVPVEILNITEKQRFMDGDKNIAI ISEAASSGISLQADRRAKNQRRRVHMTLELPWSADRAIQFGR
 THRSNQVTAPEYVFLISELAGEQRFASIVAKRLESLGAL THGDRRATESRDL SRFNFDNKYGRNALEIVM
 KSIVNLDSPMVSPPPDYPGEFFKDV RQGLIGVGLINVEDRSGIL TLDKDYNNIGKFLNRI LGMVHQQNA
 LFQYFADTLTAVVQNAKNGRYDMGILD LGSDEKVRKSDVKKFLTPGYSTSGHVELYTI SVERGMSWEE
 ATKIWAELTGPDDGFYLSLQIRNNKKTAILVKEVNPKKLFLVYRPNTGKQLKLEIYADLKKYKVVSD
 DALMHWLDQYNSSADTCTHAYWRGNCKASLGLVCEIGLRCRTYYVLCGSVLSVWTKVEGVLASVSGTNV
 KMQIVRLRTEDGQRIVGLIIPANCVSPLVNL LSTSDSQQLAVQQQLWQQHHPQSITNLSNA

TRTRPLEQKLISEEDLAANDILDYKDDDDKV

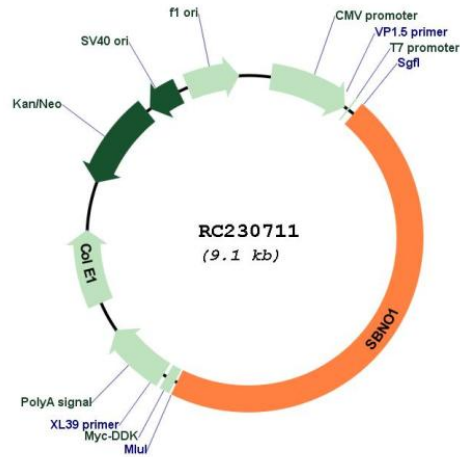
Restriction Sites:
Cloning Scheme:

SgfI-MluI

Cloning sites used for ORF Shuttling:



* The last codon before the Stop codon of the ORF

Plasmid Map:


ACCN: NM_001167856

ORF Size: 4179 bp

OTI Disclaimer: The molecular sequence of this clone aligns with the gene accession number as a point of reference only. However, individual transcript sequences of the same gene can differ through naturally occurring variations (e.g. polymorphisms), each with its own valid existence. This clone is substantially in agreement with the reference, but a complete review of all prevailing variants is recommended prior to use. [More info](#)

OTI Annotation: This clone was engineered to express the complete ORF with an expression tag. Expression varies depending on the nature of the gene.

Components: The ORF clone is ion-exchange column purified and shipped in a 2D barcoded Matrix tube containing 10ug of transfection-ready, dried plasmid DNA (reconstitute with 100 ul of water).

Reconstitution Method:

1. Centrifuge at 5,000xg for 5min.
2. Carefully open the tube and add 100ul of sterile water to dissolve the DNA.
3. Close the tube and incubate for 10 minutes at room temperature.
4. Briefly vortex the tube and then do a quick spin (less than 5000xg) to concentrate the liquid at the bottom.
5. Store the suspended plasmid at -20°C. The DNA is stable for at least one year from date of shipping when stored at -20°C.

RefSeq: [NM_001167856.3](#)

RefSeq ORF: 4182 bp

Locus ID: 55206

UniProt ID: [A3KN83](#)

Cytogenetics: 12q24.31

MW: 154.8 kDa