

Product datasheet for RC230706

PARD3 (NM_001184785) Human Tagged ORF Clone

Product data:

Product Type:	Expression Plasmids
Product Name:	PARD3 (NM_001184785) Human Tagged ORF Clone
Tag:	Myc-DDK
Symbol:	PARD3
Synonyms:	ASIP; Baz; PAR3; PAR3alpha; PARD-3; PARD3A; PPP1R118; SE2-5L16; SE2-5L1T1; SE2-5T2
Vector:	pCMV6-Entry (PS100001)
E. coli Selection:	Kanamycin (25 ug/mL)
Cell Selection:	Neomycin
ORF Nucleotide Sequence:	>RC230706 representing NM_001184785 Red=Cloning site Blue=ORF Green=Tags(s)

TTTTGTAATACGACTCACTATAGGGCGCCGGAATTCGTCGACTGGATCCGGTACCGAGGAGATCTGCC
GCC**CGATCGCC**

ATGAAAGTGACCGTGTGCTTCGGACGGACCCGGGTGGTCGTGCCGTGCGGGACGGCCACATGAAAGTTT
TCAGCCTCATCCAGCAGGCGGTGACCCGCTACCGGAAGGCCATCGCCAAGGATCCAAACTACTGGATACA
GGTGCATCGCTTGAACATGGAGATGGAGGAATACTAGACCTTGATGACATTCTTTGTGATGTAGCAGAC
GATAAAGACAGACTGGTAGCAGTGTGATGAGCAGGATCCACATCACGGAGGTGATGGCACCAGTGCCA
GTTCCACGGGTACCCAGAGCCCAGAGATATTTGGTAGTGAGCTTGGCACCAACAATGTCTCAGCCTTTCA
GCCTTACCAAGCAACAAGTGAATTTGAGGTACACCTTCAGTCTTCGAGCAAATATGCCTCTTCATGTT
CGACGCAGTAGTGACCCAGCTCTAATTGGCCTCTCCACTTCTGTGAGTGTAGTAATTTTTCTCTGAAG
AGCCTTCAAGGAAAAATCCACACGCTGGTCAACAACAGCTGGCTTCTCAAGCAGAACACTGCTGGGAG
TCCTAAAACCTGCGACAGGAAGAAAGATGAAAACACAGAACCTCCCGCGGGTACTAGTAAGTGGTCT
AACCAATTTAGAGAGACAATGCTCGCTCGTCTGTGAGTGCCAGTCACCAATGGTGGGCAAGTGGCTGG
AGAAACAAGAACAGGATGAGGATGGGACAGAAGGATAACAGTCGTGTTGAACCTGTTGGACATGCTGA
CACGGGTTTGGAGCATATACCAACTTTCTCTGGATGATATGGTAAAGCTCGTAGAAGTCCCAACGAT
GGAGGGCCTCTGGGAATCCATGTAGTGCCTTTAGTGCTCGAGGCGGCAGAACCTGGGGTTATTAGTAA
AACGATTGGAGAAAGGTGGTAAAGCTGAACATGAAAATCTTTTTCGTGAGAATGATTGCATTGTCAGGAT
TAATGATGGCGACCTTCGAAATAGAAGATTTGAACAAGCACAACATATGTTTCGCAAGCCATGCGTACA
CCCATCATTTGGTTCCATGTGGTTCTGCAGCAAATAAAGAGCAGTATGAACAACATCCCAAAGTGA
AGAACAATTACTATTCAAGCCGTTTTAGCCCTGACAGCCAGTATATTGACAACAGGAGTGTGAACAGTGC
AGGGCTTACACCGGTGCAGAGAGCACCCGACTGAACCACCCGCTGAGCAGATAGACTCTCACTCAAGA
CTACCTCATAGCGCACACCCCTCGGAAAACCACCATCCGCTCCAGCCTCGGCACCTCAGAAATGATTTA
GTACGACTGTAAGCAGTGGTTATAACACCAAAAAAATAGGCAAGAGGCTTAATATCCAGCTTAAGAAAGG
TACAGAAGGTTTGGGATTCAGCATCACTCCAGAGATGTAACAATAGGTGGCTCAGCTCCAATCTATGTG
AAAAACATTCTCCCCGGGGGGCGCCATTAGGATGGCCGACTTAAGGCAGGAGACAGACTTATAGAGG



[View online >](#)

TAAATGGAGTAGATTTAGTGGGCAAATCCCAAGAGGAAGTTGTTTCGCTGTTGAGAAGCACCAAGATGGA
AGGAACTGTGAGCCTTCTGGTCTTTCCGCCAGGAAGACGCCTTCCACCCAAGGGAAGTGAATGCAGAGCCA
AGCCAGATGCAGATTCAAAAGAAACGAAAGCAGAAGATGAGGATATTGTTCTTACACCTGATGGCACCA
GGGAATTTCTGACATTTGAAGTCCCCTTAATGATTCAGGATCTGCAGGCCTTGGTGTCAAGTGTCAAAGG
TAACCGGTCAAAGAGAACCACGCAGATTTGGGAATCTTGTCAAGTCCATTATTAATGGAGGAGCAGCA
TCTAAAGATGGAAGGCTTCGGGTGAATGATCACTGATAGCAGTAAATGGAGAATCCCTGTTGGGCAAGA
CAAACCAAGATGCCATGGAACCCCTAAGAAGGTCTATGTCTACTGAAGGCAATAAACGAGGAATGATCCA
GCTTATTGTTGCAAGGAGAATAAGCAAGTGAATGAGCTGAAGTCACTGGGAGCCCCCTGGACCTGAG
CTGCCATTGAAACAGCGTTGGATGATAGAGAACGAAGAATTTCCATTCCCTCTACAGTGGGATTGAGG
GGCTTGATGAATCGCCCAGCAGAAATGCTGCCCTCAGTAGGATAATGGGTAATACCAGCTGTCCCTAC
AGTGAATATGCCCAAGATGACTGTCTATTAGAAAGATGACAGGTTGCCAGTGCTTCTCCACATCTC
TCTGACCAGTCTTCCAGCTCCCATGATGATGTGGGTTTGTGACGGCAGATGCTGGTACTTGGGCCA
AGGCTGCAATCAGTGATTCAGCCGACTGCTCTTGTAGTCCAGATGTTGATCCAGTCTTGTCTTTCAACG
AGAAGGATTTGGACGTGAGATGTCAGAAAAACGCACAAAGCAATTTTCAGATGCCAGTCAATTGGAT
TTCGTTAAAACACGAAAATCAAAAAGCATGGATTTAGGTATAGCTGACGAGACTAACTCAATACAGTGG
ATGACCAGAAAGCAGGTTCTCCACGAGAGATGTGGGTCTTCCCTGGGTCTGAAGAAGTCAAGCTCGTT
GGAGAGTCTGCAGACCGCAGTTGCCGAGGTGACTTTGAATGGGGATATCCTTTCCATCGTCCACGGCCG
CGGATAATCAGAGGCAGGGGATGCAATGAGAGCTTCCAGAGCTGCCATCGACAAATCTTATGATAAACCCG
CGGTAGATGATGATGATGAAGGCATGGAGACCTTGAAGAAGACACAGAAGAAAGTTCAAGATCAGGGAG
AGAGTCTGATCCACAGCCAGTGTGATCAGCCTTCCCCTCTCTGGAGAGACAAATGAATGGAACCAAGAG
AAAGGTGATAAGACTGATAGAAAAAGGATAAACTGGAAAAGAAAAGAAAGATAGAGATAAGGAGA
AGGATAAAATGAAAGCCAAGAAGGGAATGCTGAAGGCTTGGGAGACATGTTCAAGTGTGGCAACATCG
AAAAGATGACAAGATTGAGAAAACGGGTAAAATAAAAATACAGGAATCCTTTACATCAGAAGAGGAGAG
ATACGAATGAAGCAGGAGCAGGAGAGGATTCAAGCCAAAACCTCGAGAATTTAGGGAACGACAAGCTCGAG
AGCGTGACTATGCTGAAATTCAGATTTTCATCGGACATTTGGCTGTGATGATGAGTTAATGTATGGGGG
AGTTTCTTCTTATGAAGTTCCATGGCTCTCAACGCTAGACCTCAGAGCCACGAGAAGGCATATGATG
GATGCTTTGTATGCCAAGTCAAGAAGCCGCGAATTCCAACCCCTCACCTGTAGACAGTAAACAGATCAA
CTCCTAGCAATCATGATCGGATACAGCGTCTGAGGCAAGAATTTAGCAAGCAAAGCAAGATGAAGATGT
AGAAGATCGTCGGCGGACCTATAGTTTTGAGCAACCTGGCCGAACGCACGGCCGGCAGCAGAGCGGG
CGACTCGGTGTCCGTGGAGGTGATGATGACGGCAGCGGCAGGAGGAGCGCAGAGCTCCACAGCAGG
CCCAGCGCAGTACAGCTCTCTGCTCGGCAAAGCAGGAAAAATGCCAGCTCGGTCTCCAGGACTCTTG
GGAGCAGAACTACTCCCCTGGGGAAGGCTTCCAGAGTGCCAAAGAGAACCCAGGTACTCCAGCTACCAA
GGCTCCAGGAACGGCTACCTGGGAGGACATGGCTTCAACGCCAGGGTCATGCTGGAACTCAGGAGCTCC
TTCGCCAGGAACAGAGGCGGAAGGAGCAGCAGATGAAGAAGCAGCCTCCTTCCGAGGGGCCAGCAACTA
TGACTCGTATAAGAAAGTCCAGGACCCAGTTACGCCCTCCCAAGGGGCCCTTCCGGCAAGATGTGCC
CCCTCCCTTCTCAGGTTGCGAGGCTGAACAGACTTCAGACTCCTGAGAAAGGGAGGCCCTTCTATTCC

ACGCGTACGCGGCGCTCGAGCAGAACTCATCTCAGAAGAGGATCTGGCAGCAATGATATCCTGGATT
ACAAGGATGACGACGATAAGGTTTAA

Protein Sequence: >RC230706 representing NM_001184785
 Red=Cloning site Green=Tags(s)

```

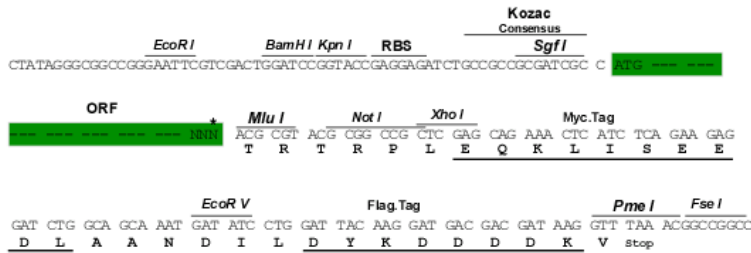
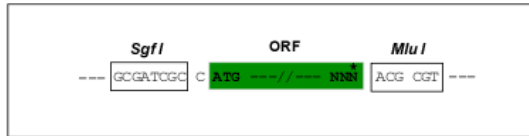
MKVTVCFGRTRVVVPCGDGHMKVFSLIQQAVTRYKAIKDPNYWIQVHRLEHGDGGILDLDLDDILCDVAD
DKDRLVAVFDEQDPHHGGDGTSAASSTGTQSP EIFGSELGTNNVSAFQPYQATSEIEVTPSVLRANMPLHV
RRSSDPALIGLSTSVSDSNFSSEEPSRKNPTRWSTTAGFLKQNTAGSPKTCDRKKDENYRSLPRDTSNWS
NQFQRDNARSSLASHPMVGWLEKQEQDEGDTEEDNSRVEPVGHADTGLEHIPNFSLDDMVKLVEVPND
GGPLGIHVVPFSARGGRTLGLLVKRLEKGGKAEHENLFRENDCIVRINDGDLRNRFEQAQHMFRQAMRT
PIIWFHVVPAANKEQYEQLSQSEKNYYSSRSPDSQYIDNRSVNSAGLHTVQRAPRLNHPPEQIDSHSR
LPHSAHPGKPPSAPASAPQNVFSTTVSSGYNTKKIGKRLNIQLKKGTEGLGFSITSRDVTIGGSAPIYV
KNILPRGAAIQDGRKAGDRLIEVNGVDLVGKSQEEVVSLLRSTKMEGTVSLLVFRQEDAFHPRELNAEP
SQMQIPKETKAEDEDIVLTPDGTREFLTFEVPLNDSGSAGLGVSVKGNRSKENHADLGIFVKSIINGGAA
SKDGRRLVNDQLIAVNGESLLGKTNDAMETLRRSMSTEGNKRGMIQLIVARRISKCNELKSPGSPGPGE
LP IETALDDRERRISHSLYSGIEGLDESPSRNAALSRIMGKYQLSPTVNMPQDDTVIIEDRLPVLPPHL
SDQSSSSSHDDVGFVTADAGTWAKAAISDSADCSLSPDVPVLAQREGFGRQSMSEKRTKQFSDASQLD
FVKTRKSKSMDLGIADETKLNVTDDQKAGSPSRDVGPSLGLKSSSLESLQTAVAEVTLNGDIPFHRPRP
RIIRGRGCNESFRAAIDKSYDKPAVDDDDDEGMETLEEDTEESSRSGRESVSTASDQPSHSLERQMNGNQE
KGDKTRKDKDKTGKEKKKDRDKEKDKMKAKKGMKGLGDMFRFGKHKRDKDKIEKTGKIKIQESFTSEEER
IRMKQEQERIQAKTREFRERQARERDYAEIQDFHRTFGCDELMEYGGVSSYEGSMALNARQPSPREGHMM
DALYAQVKKPRNSKPSVDSNRSTPSNHDRIQRLRQEFQQAQKQDEVEDRRRTYSFEQPWPNARPATQSG
RHSVSVVEVQMQRQREERESSQQAQRQYSSLPRQSRKNASSVSQDSWEQNYSPGEGFQSAKENPRYSSYQ
GSRNGYLGGHGFNARVMLETQELLRQEQRRKEQQMKKQPPSEGPSNYDSYKKVQDPSYAPPKGPFRRQDVP
PSPSQVARLNRLQTPEKGRPFYS
  
```

TRTRPLEQKLISEEDLAANDILDYKDDDDKV

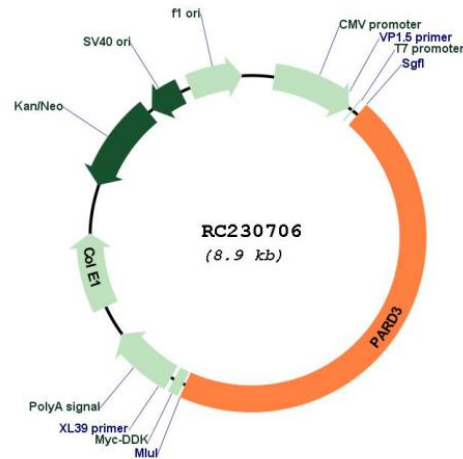
Restriction Sites:
Cloning Scheme:

SgfI-MluI

Cloning sites used for ORF Shuttling:



* The last codon before the Stop codon of the ORF

Plasmid Map:


ACCN: NM_001184785

ORF Size: 4059 bp

OTI Disclaimer: The molecular sequence of this clone aligns with the gene accession number as a point of reference only. However, individual transcript sequences of the same gene can differ through naturally occurring variations (e.g. polymorphisms), each with its own valid existence. This clone is substantially in agreement with the reference, but a complete review of all prevailing variants is recommended prior to use. [More info](#)

OTI Annotation: This clone was engineered to express the complete ORF with an expression tag. Expression varies depending on the nature of the gene.

Components: The ORF clone is ion-exchange column purified and shipped in a 2D barcoded Matrix tube containing 10ug of transfection-ready, dried plasmid DNA (reconstitute with 100 ul of water).

Reconstitution Method:

1. Centrifuge at 5,000xg for 5min.
2. Carefully open the tube and add 100ul of sterile water to dissolve the DNA.
3. Close the tube and incubate for 10 minutes at room temperature.
4. Briefly vortex the tube and then do a quick spin (less than 5000xg) to concentrate the liquid at the bottom.
5. Store the suspended plasmid at -20°C. The DNA is stable for at least one year from date of shipping when stored at -20°C.

RefSeq: [NM_001184785.1](#), [NP_001171714.1](#)

RefSeq ORF: 4062 bp

Locus ID: 56288

UniProt ID: [Q8TEW0](#)

Cytogenetics: 10p11.22-p11.21

Protein Pathways:	Adherens junction, Chemokine signaling pathway, Endocytosis, Neuroactive ligand-receptor interaction, Tight junction
MW:	151.6 kDa
Gene Summary:	This gene encodes a member of the PARD protein family. PARD family members interact with other PARD family members and other proteins; they affect asymmetrical cell division and direct polarized cell growth. Multiple alternatively spliced transcript variants have been described for this gene. [provided by RefSeq, Oct 2011]