

Product datasheet for RC230701

PCDH11X (NM_001168363) Human Tagged ORF Clone

Product data:

Product Type:	Expression Plasmids
Product Name:	PCDH11X (NM_001168363) Human Tagged ORF Clone
Tag:	Myc-DDK
Symbol:	PCDH11X
Synonyms:	PCDH-X; PCDH-Y; PCDH11; PCDH11Y; PCDH22; PCDHX; PPP1R119
Mammalian Cell Selection:	Neomycin
Vector:	pCMV6-Entry (PS100001)
E. coli Selection:	Kanamycin (25 ug/mL)
ORF Nucleotide Sequence:	>RC230701 representing NM_001168363 Red=Cloning site Blue=ORF Green=Tags(s)

TTTTGTAATACGACTCACTATAGGGCGGCCGGAATTCGTCGACTGGATCCGGTACCGAGGAGATCTGCC
GCC**CGGATCGCC**

ATGGACTTGTGTCCGGGACGTACATTTTCGCGGTCTGCTAGCATGCGTGGTGTCCACTCTGGCGCCC
AGGAGAAAACTACACCATCCGAGAAGAAATGCCAGAAAACGTCCTGATAGGCGACTTGTGAAAGACCT
TAACCTGTGCTGATTCCAAACAAGTCTTGACAACCTGCTATGCAGTTCAAGCTAGTGTACAAGACCGGA
GATGTGCCACTGATTGCAATTGAAGAGGATACTGGTGAGATCTTCACTACTGGCGCTCGCATTGATCGTG
AGAAATATGTGCTGGTATCCCAAGGGATGAGCATTGCTTTTATGAAGTGGAGGTTGCCATTTTGGCGGA
TGAAATATTTAGACTGGTTAAGATACGTTTTCTGATAGAAGATATAAATGATAATGCACCATTGTTCCCA
GCAACAGTTATCAACATATCAATTCCAGAGAACTCGGCTATAAACTCTAAATATACTCTCCAGCGGCTG
TTGATCCTGACGTAGGAATAAACGGAGTTCAAACTACGAACTAATTAAGAGTCAAAACATTTTTGGCCT
CGATGTCATTGAAACACCAGAAGGAGACAAGATGCCACAACCTGATTGTTCAAAGGAGTTAGATAGGGAA
GAGAAGGATACCTACGTGATGAAAGTAAAGTTGAAGATGGTGGCTTTCTCAAAGATCCAGTACTGCTA
TTTTGCAAGTGAAGTACTGATACAAATGACAACCCAGTCTTTAAGGAGACAGAGATTGAAGTCAG
TATACCAGAAAAATGCTCCTGTAGGCACTTCAGTGACACAGCTCCATGCCACAGATGCTGACATAGGTGAA
AATGCCAAGATCCACTTCTTTTCAGCAATCTAGTCTCCAACATTGCCAGGAGATTATTTACCTCAATG
CCACCACTGGACTTATCACAATCAAAGAACCCTGGATAGGGAAGAAACACCAAAACCACAAGTTACTGGT
TTTTGGCAAGTGAAGTGGATTGATGCCAGCAAGAGCAATGGTGGTAAATGTTACAGATGTCAATGAT
AATGTCCCATCCATTGACATAAGATACATCGTCAATCCTGTCAATGACACAGTTGTTCTTTTCAGAAAATA
TTCCACTCAACACCAAAATGCTCTCATAACTGTGACGGATAAGGATGCGGACCAATAATGGCAGGGTGC
ATGCTTACAGATCATGAAATCCCTTTTCAGATTAAGGCCAGTATTCAGTAATCAGTTCTCTCTGGAGACT
GCAGCATATCTTGACTATGAGTCCAAAAAGAATATGCCATTAATTAAGTGGCTGCAGATGCTGGCAAC
CTCCTTTGAATCAGTCAGCAATGCTCTTCATCAAAGTAAAGATGAAATGACAATGCTCCAGTTTTAC
CCAGTCTTTCGTAACCTGTTTCTATTCTGAGAATAACTCTCCTGGCATCCAGTTGACGAAAGTAAGTGCA



[View online »](#)

ATGGATGCAGACAGTGGGCCAATGCTAAGATCAATTACCTGCTAGGCCCTGATGCTCCACCTGAATTCA
GCCTGGATTGTCGTACAGGCATGCTGACTGTAGTGAAGAACTAGATAGAGAAAAAGAGGATAAATATTT
ATTCACAATTCTGGCAAAAGATAACGGGGTACCACCCCTAACCAGCAATGTCACAGTCTTTGTAAGCATT
ATTGATCAGAATGACAATAGCCAGTTCCTCACTACAATGAATACAACCTCTATGTCCCAGAAAACCTTC
CAAGGCATGGTACAGTAGGACTAATCACTGTAAGTATGATCTGATTATGGAGACAATCTGCAGTTACGCT
CTCCATTTTAGATGAGAATGATGACTTCACCATTGATTCACAACTGGTGTATCCGACCAAAATATTTCA
TTTGATAGAGAAAAACAAGAATCTTACACTTTCTATGTAAGGCTGAGGATGGTGGTAGAGTATCACGTT
CTTCAAGTGCCAAAGTAACCATAAATGTGGTTGATGTCAATGACAACAAACCAGTTTTCATTGTCCCTCC
TTCCAAGTGTCTTATGAATTGGTTCTACCGTCCACTAATCCAGGCACAGTGGTCTTTCAGGTAATTGCT
GTTGACATGACACTGGCATGAATGCAGAGGTTTCGTTACAGCATTGTAGGAGGAAACACAAGAGATCTGT
TTGCAATCGACCAAGAAACAGGCAACATAACATTGATGGAGAAATGTGATGTTACAGACCTTGGTTTACA
CAGAGTGTGGTCAAAGCTAATGACTTAGGACAGCCTGATTCTCTTTCAGTGTGTAATTGTCAATCTG
TTCGTGAATGAGTCGGTGACCAATGCTACACTGATTAATGAACTGGTGCAGGCAAAAGCACTGAAGCACCAG
TGACCCCAAACTAGAGATAGCTGATGTATCCTACCAACTAGTACTATGTCAAGATCCTGGTTGCAGC
TGTTGCTGGCACCATAACTGTCGTTGATGTTATTTTCATCACTGCTGTAGTAAGATGTGCCAGGCACCA
CACCTTAAGGCTGCTCAGAAAAACAAGCAGAATCTGAATGGGCTACCCCAACCCAGAAAAACAGGCAGA
TGATAATGATGAAGAAAAAGAAAAAGAAGAAGCATTCCCCTAAGAATTGCTGCTTAATTTTGTCCAC
TATTGAAGAACTAAGGCAGATGATGTTGACAGTGTGAAACAGAGTCACACTAGACCTTCCCTATTGAT
CTAGAAGAGCAACAATGGGAAAGTACAATTGGGTAACACTACCTACTACTTTCAAGCCCGACAGCCCTG
ATTTGGCCCGACACTACAATCTGCCTCTCCACAGCCTGCCTTCCAAATTCAGCCTGAAACTCCCCTGAA
TTCGAAGCACCACATCATCCAAGAACTGCCTCTCGATAACACCTTTGTGGCCTGTGACTCTATCTCCAAG
TGTTCCCAAGCAGTTGAGTCCCTACAGCCTTCTGACTGTGGTATCCAGTGACGACCTTCGAGGTAC
CTGTGTCGATACACACCAGACCCCAATGAAGGAGGTTGTGCGATCTTGCACCCCATGAAAGAGTCTAC
AACTATGGAGATCTGGATTCATCCCAACCACAGTCCCAGCGGCTGTACATTTACCTGCCAGAAAGGC
TCTCAGGAAAGCAGCAGTGTGGTGGACTGGGAGACCATGATGCAGGCAGCCTTACCAGCACATCTCATG
GCCTGCCCTTGGCTATCCTCAGGAGGAGTACTTTGATCGTGCTACACCCAGCAATCGCACTGAAGGGGA
TGGCAACTCCGATCCTGAATCTACTGCAGAAATAACTGTTCAACCAACTGTGGAAGAGGCCTCTGACAAC
TGCACTCAAGAATGTCTCATCTATGGCCATTCTGATGCCTGCTGGATGCCGGCATCTCTGGATCATTCCA
GCTCTTCGCAAGCACAGGCTCTGCTCTATGCCACAGCCACCCTGTACAGGCCTCTACTCAGCACCA
CAGCCCACGAGTGACACAGACCATTGCTCTCTGCCACAGCCCTCCAGTGACACAGACCATCGATTGTGC
CACAGCCCACCACCGATACAGGTGTCTGCTCTCCACCACAGTCTCCTCTAGTGCAGGCTACTGCACCTC
ACCACAGCCACCATCAGCACAGGCCTCAGCCCTCTGCTACAGCCCTCCTTAGCACAGGCTGCTGCAAT
CAGCCACAGCTCTCCTCTGCCACAGGTTATTGCCCTCCATCGTAGTCAGGCCAATCATCAGTCAGTTTG
CAGCAAGGTTGGGTGCAAGGTGCTGATGGGCTATGCTCTGTTGATCAGGGAGTGCAAGGTAGTGCAACAT
CTCAGTTTTACCCATGTCTGAAAGACTTCATCCCAGTGTGATTCATTAAGTCAATTCCTTTGACAAC
CTTCACTCCACGCCAACAGGCCAGACCGTCCAGAGGTGATTCCTCCATTATGGAAGAATCCCTTG

ACGCGTACGCGGCGCTCGAGCAGAACTCATCTCAGAAGAGGATCTGGCAGCAATGATATCCTGGATT
ACAAGGATGACGACGATAAGGTTTAA

Protein Sequence: >RC230701 representing NM_001168363
 Red=Cloning site Green=Tags(s)

MDLLSGTYIFAVLLACVVFHSGAQEKNYTIREEMPENVLIGDLLKDLNLSLIPNKSLTTAMQFKLVYKTG
 DVPLIRIEEDTGEIFTTGARIDREKLCAGIPRDEHCFYEVEVAILPDEIFRLVKIRFLIEDINDNAPLFP
 ATVINISIPENSAINSKYTLPAAVDPDVGINGVQNYELIKSQNIFGLDVIETPEGDKMPQLIVQKELDRE
 EKDTYVMKVKVEDGGFPQRSSTAILQVSVTDTNDNHPVFKETEIEVSIIPENAPVGTSVTQLHATDADIGE
 NAKIHFSFNLVSNIAARRLFHLNATTGLITIKEPLDREETPNHKLLVLASDGGLMPARAMVLVNVTDVND
 NVPSIDIRYIVNPVNDTVVLSENIPLNTKIALITVTDKADHNGRVTCFTDHEIPFRLRPVFSNQFLEET
 AAYLDYESTKEYAIKLLAADAGKPLNQSAMLFIKVKDENDNAPVFTQSFVTVSIPENNSPGIQLTKVSA
 MDADSGPNAKINYLGLDAPPEFSLDCRTGMLTVVKLDREKEDKYLFTILAKDNGVPLTSNVTVFVSI
 IDQNDNSPVFTHNEYNFYVPENLPRHGTVGLITVTDPDYGDNSAVTLILDENDDFTIDSQTGVIRPNIS
 FDREKQESYTFYVKAEDGGRVSRSSAKVTINVVDVNDNKPVFI VPPSNCSYELVLPSTNPGTVVFQVIA
 VDNDTGMAEVRYSIVGGNTRDLFAIDQETGNITLMEKCDVTDLGLHRVLVKANDLGQPDLSFVIVNVL
 FVNESVTNATL INELVRKSTEAPVTPNTEIADVSSPTSDYVKILVAAVAGTITVVVIFITAVVRCRQAP
 HLKAAQKNKQNSEWATPNPENRQIMMKKKKKKKHSPKNLLNFVTIEETKADDVSDGGRVTLDLPID
 LEEQTMGKYNWVTTPTTFKPDSPDLARHYKSASPQAFQIQPETPLNSKHIIQELPLDNTFVACDSISK
 C SSSSSDPYSVSDCGYPVTTFEVPSVHTRPPMKEVVRSCPTMKESTTMEIWIHPQPQSQRRTVHFLPEG
 SQESSSDGGLGDHDAGSLTSTSHGLPLGYPQEEYFDRA TPNRTEGDGNSDPESTAEITVQPTVEEASDN
 CTQECL IYGHSDACWMPASLDHSSSSQAQASALCHSPPLSQASTQHHSRVTQTIALCHSPVVTQTIALC
 HSPPPIQVSALHHSPLVQATALHHSPPSAQASALCYSPLAQA AAI SHSSPLPQVIALHRSQAQSSVSL
 QQGWVQADGLCSVDQGVQGSATSQFYTM SERLHPSDDSIKVIPLTTFTPRQARSRGDSPI MEHPL

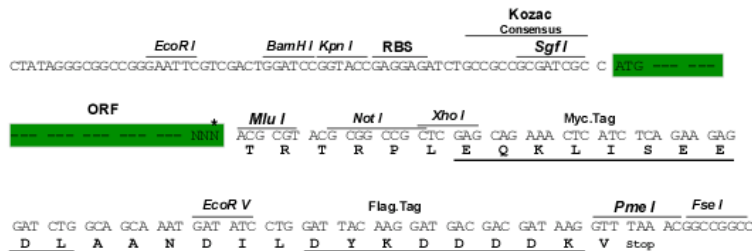
TRTRPLEQKLISEEDLAANDILDYKDDDDKV

Restriction Sites:

Sgfl-MluI

Cloning Scheme:

Cloning sites used for ORF Shuttling:



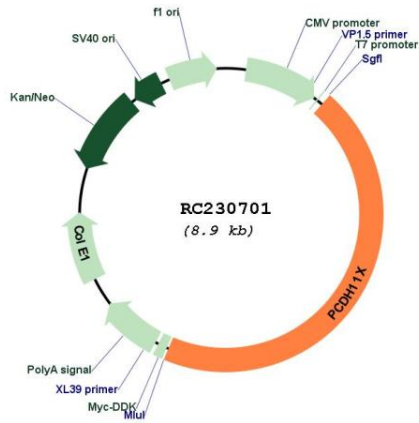
* The last codon before the Stop codon of the ORF

ACCN: NM_001168363

ORF Size: 3987 bp

OTI Disclaimer:	The molecular sequence of this clone aligns with the gene accession number as a point of reference only. However, individual transcript sequences of the same gene can differ through naturally occurring variations (e.g. polymorphisms), each with its own valid existence. This clone is substantially in agreement with the reference, but a complete review of all prevailing variants is recommended prior to use. More info
OTI Annotation:	This clone was engineered to express the complete ORF with an expression tag. Expression varies depending on the nature of the gene.
Components:	The ORF clone is ion-exchange column purified and shipped in a 2D barcoded Matrix tube containing 10ug of transfection-ready, dried plasmid DNA (reconstitute with 100 ul of water).
Reconstitution Method:	<ol style="list-style-type: none">1. Centrifuge at 5,000xg for 5min.2. Carefully open the tube and add 100ul of sterile water to dissolve the DNA.3. Close the tube and incubate for 10 minutes at room temperature.4. Briefly vortex the tube and then do a quick spin (less than 5000xg) to concentrate the liquid at the bottom.5. Store the suspended plasmid at -20°C. The DNA is stable for at least one year from date of shipping when stored at -20°C.
RefSeq:	NM_001168363.1 , NP_001161835.1
RefSeq ORF:	3990 bp
Locus ID:	27328
UniProt ID:	Q9BZA7
Cytogenetics:	Xq21.31
Protein Families:	Transmembrane
MW:	146.1 kDa
Gene Summary:	This gene belongs to the protocadherin gene family, a subfamily of the cadherin superfamily. The encoded protein consists of an extracellular domain containing 7 cadherin repeats, a transmembrane domain and a cytoplasmic tail that differs from those of the classical cadherins. The gene is located in a major X/Y block of homology and its Y homolog, despite divergence leading to coding region changes, is the most closely related cadherin family member. The protein is thought to play a fundamental role in cell-cell recognition essential for the segmental development and function of the central nervous system. Disruption of this gene may be associated with developmental dyslexia. Alternative splicing results in multiple transcript variants. [provided by RefSeq, Jun 2014]

Product images:



Circular map for RC230701