

Product datasheet for RC230692L1

AFF2 (NM_001169124) Human Tagged Lenti ORF Clone

Product data:

Product Type:	Expression Plasmids
Product Name:	AFF2 (NM_001169124) Human Tagged Lenti ORF Clone
Tag:	Myc-DDK
Symbol:	AFF2
Synonyms:	FMR2; FMR2P; FRAXE; MRX2; OX19; XLID109
Mammalian Cell Selection:	None
Vector:	pLenti-C-Myc-DDK (PS100064)
E. coli Selection:	Chloramphenicol (34 ug/mL)
ORF Nucleotide Sequence:	The ORF insert of this clone is exactly the same as(RC230692).
Restriction Sites:	SgfI-MluI
Cloning Scheme:	

Cloning sites used for ORF Shuttling:



* The last codon before the Stop codon of the ORF.

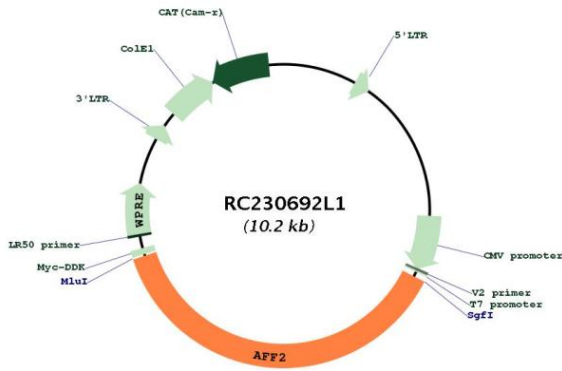
ACCN:	NM_001169124
ORF Size:	3828 bp



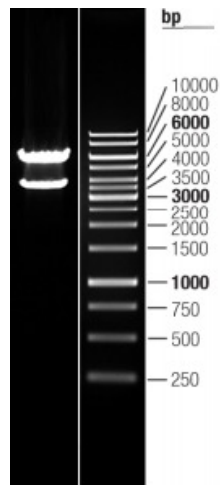
[View online >](#)

OTI Disclaimer:	The molecular sequence of this clone aligns with the gene accession number as a point of reference only. However, individual transcript sequences of the same gene can differ through naturally occurring variations (e.g. polymorphisms), each with its own valid existence. This clone is substantially in agreement with the reference, but a complete review of all prevailing variants is recommended prior to use. More info
OTI Annotation:	This clone was engineered to express the complete ORF with an expression tag. Expression varies depending on the nature of the gene.
Components:	The ORF clone is ion-exchange column purified and shipped in a 2D barcoded Matrix tube containing 10ug of transfection-ready, dried plasmid DNA (reconstitute with 100 ul of water).
Reconstitution Method:	<ol style="list-style-type: none">1. Centrifuge at 5,000xg for 5min.2. Carefully open the tube and add 100ul of sterile water to dissolve the DNA.3. Close the tube and incubate for 10 minutes at room temperature.4. Briefly vortex the tube and then do a quick spin (less than 5000xg) to concentrate the liquid at the bottom.5. Store the suspended plasmid at -20°C. The DNA is stable for at least one year from date of shipping when stored at -20°C.
RefSeq:	NM_001169124.1
RefSeq ORF:	3831 bp
Locus ID:	2334
UniProt ID:	P51816
Cytogenetics:	Xq28
Protein Families:	Druggable Genome
MW:	141.4 kDa
Gene Summary:	This gene encodes a putative transcriptional activator that is a member of the AF4\FMR2 gene family. This gene is associated with the folate-sensitive fragile X E locus on chromosome X. A repeat polymorphism in the fragile X E locus results in silencing of this gene causing Fragile X E syndrome. Fragile X E syndrome is a form of nonsyndromic X-linked cognitive disability. In addition, this gene contains 6-25 GCC repeats that are expanded to >200 repeats in the disease state. Alternate splicing results in multiple transcript variants.[provided by RefSeq, Jul 2016]

Product images:



Circular map for RC230692L1



Double digestion of RC230692L1 using SgfI and MluI