

Product datasheet for **RC230683**

PCDH7 (NM_001173523) Human Tagged ORF Clone

Product data:

Product Type:	Expression Plasmids
Product Name:	PCDH7 (NM_001173523) Human Tagged ORF Clone
Tag:	Myc-DDK
Symbol:	PCDH7
Synonyms:	BH-Pcdh; BHPCDH; PPP1R120
Mammalian Cell Selection:	Neomycin
Vector:	pCMV6-Entry (PS100001)
E. coli Selection:	Kanamycin (25 ug/mL)
ORF Nucleotide Sequence:	>RC230683 representing NM_001173523 Red=Cloning site Blue=ORF Green=Tags(s)

TTTTGTAATACGACTCACTATAGGGCGGCCGGAATTCGTCGACTGGATCCGGTACCGAGGAGATCTGCC
GCC**CGATCGCC**

ATGCTGAGGATGCGGACCGGGATGGGCGCGGGCTGGTGTGGGCTGCTGCCTCCTCTGCCGCTCT
CGCTCAGCCTGGCGGCCCAAGCAGCTCCTCCGGTACCGGTGGCCGAGGAGGGCCCGCCGACGTCCG
CATCGGCAACGTGGCTTACAGCTGGGCATCGTGACCGGATCGGGTGGAGTACTTTCAGCCTGGAGTCC
GGTCCGAGTACCTGAAGATCGACAACCTACTGGCGAGCTGAGCAGGAGCGAGCGGCCATCGACCGCG
AGAAGCTGCCCCAGTGTGATGATCTTCGACGAGAACGAGTGTTCCTGGACTTCGAGGTGTCGGTGAT
CGGGCCCTCGCAGAGCTGGGTGGACCTGTTTGGGGTACAGTTCATCGTGTGTTGACATCAACGACAACAG
CCCACCTTCCCGTCGCCCCGTGCTCACGCTCACGGTGGAGGAGAATCGGCCGGTGGGCACACTTTACCTGC
TGCCACAGCCACCGACCGGACTTCGGCCGCAACGGCATCGAGCGCTACGAGCTGCTCCAGGAGCCCGG
AGGCGGCGGCGAGCGGGCGAGAGCCGGCGCGCCGGGGCGCCGACAGCGCCCCACCCCGGGGGCGGC
GGGAACGGCGGAGCGGGCGGGCTCGGGAGGCTCCAAGCGGGCTGGACGCATCAGAGGGCGGGCGGC
GCACCAACCCCGGGCGCCGAGCAGCGTGTTCGAGCTGCAGGTGGCGGACACCCCGGACGGCGAGAAGCA
GCCGACGTGATCGTGAAGGGGGCGCTGGACCGGAGCAGCGGACTCCTACGAGCTGACCTGCGAGTG
CGCGACGGGGGACCCCGCTCGCTCCTCGAGGCCATCCTACGGGTCTCATCACCAGCTGAACGACA
ACAGCCCCGCTTCGAGAAGAGCGTGTACGAGGCCGACTTGGCTGAGAACAGCGCCCCGGGACCCCAT
CCTGCAACTGCGCGCAGCCGACTTGGACGTGGGGTCAACGGGCAGATCGAATACGTGTTGCGGGCGGCC
ACCGAGTCGGTGAGGCGGCTGCTGCGCCTTACGAGACGTCCGGTGGCTCAGCGTCTGCACCGGATCG
ACCGGAGGAGGTGAACAGCTGCGCTTACGGTTCATGGCCCGGACCGCGGGCAGCCCCCAAGACCGA
CAAGGCCACCGTGGTCTTAACATCAAAGACGAGAACGACAACGTGCCGTCCATTGAAATCCGCAAGATT
GGGCGCATCCCCCTCAAGGACGGGGTGGCAACGTGGCCGAGGACGTTCTGGTCGACACCCCATCGCTC
TGGTGCAGGTGTCGACCGAGACCAAGGCGAGAACGGGGTGGTCACTGCACCGTGGTGGCGACGTGCC
CTTCCAGCTCAAGCCAGCCAGCAGCAGCCAGGCGGACGAGAACAAGAAAAGTACTTCTGCACACCTCG



[View online »](#)

ACCCCTCTGGAATATGAGGCCACCCGGGAGTTCAACGTGGTCATCGTGGCGGTGGACTCAGGCAGCCCCA
GCCTCTCGAGCAACAACCTCCCTGATTGTCAAGGTGGGAGACACCAACGACAACCCGCCCATGTTCCGGCCA
GTCGGTGGTGGAGGTTTACTTCCCTGAGAACACATCCCGGGCGAGAGGGTGGCCACGGTCTGGCGACA
GACGCAGACAGCGGTAAGAACGCCGAGATCGCCTACTCGCTGGACTCCTCTGTGATGGGGATCTTTGCCA
TCGATCCCGATTCTGGGGACATCCTGGTCAATACCGTGTGGACCGGAGCAGACTGACAGGTATGAGTT
TAAAGTTAACGCCAAAGACAAAGGCATCCCGTGTGCTGCAGGGCAGCACTACGGTGATTGTGCAGGTGGCT
GATAAAAATGACAATGACCCTAAGTTTATGCAGGACGTCTCACCTTTTATGTGAAAGAAAACCTTGACG
CCAACAGCCCTGTGGGGATGGTCAACCGTATGGATGCTGACAAGGGGCGGAATGCAGAGATGAGCCTGTA
CATAGAGGAGAACAATAACATTTTTTCTATTGAAAATGACACGGGGACATTTACTCCACAATGTCTTTT
GACCGGGAACATCAGACCACATACACTTTCAGAGTCAAGGCTGTGGATGGGGGAGATCCTCCAGATCTG
CCACAGCTACAGTCTCGCTTTTTGTGATGGATGAAAATGACAATGCTCCACAGTTACCCTTCCAAAAA
CATTTCTACACTTTACTGCCACCTTCGAGTAATGTGAGGACAGTAGTACAGTGTGGCAACAGAC
AGTGATGATGGCACAATGCAGACCTGAACTACAGCATTGTGGGAGGAAATCCCTTCAAGCTGTTTGAA
TTGATCCCACTAGTGGTGTGGTTTCTTAGTGGGAAAACCTACCCAAAAGCATTATGGCTTGACAGGTT
GGTGGTCAAGTGAATGACAGTGGGCGCCTTCCAGTCCACCAGACTCTGGTGCAGTGTGTTGCAAT
GAAAGTGTCTAATGCAACTGCGATTGACTCCAGATAGCTAGAAGTTTGCACATCCCACTCACCCAGG
ATATAGCTGGTGACCCAAGCTATGAAATTAGCAACAGAGACTCAGTATTGTCATTGGCGTAGTTGCTGG
CATTATGACGGTATTCTAATCATCTTAATTGTAGTGTGGCAAGGTAAGTGCAGGTCAAAAATAAAAA
GGCTATGAAGCCGGCAAAAAAGATCACGAAGACTTTTTTACCCCAACAGCATGACAAAATCTAAAAAGC
CTAAAAAGGACAAGAAAAACAAAAATCTAAGCAGCCTCTACAGCAGCATTGTCACTGTGGAGGCTTC
TAAGCCAAATGGACAGAGGTATGATAGTGTCAATGAGAAGCTGTCAGACAGCCCAAGCATGGGGCGATAC
AGATCCGTTAATGGTGGGCCCGCAGTCTGACCTGGCAAGGCATTACAAATCTAGTTCCCAATTGCCTA
CTGTTTCAGCTTATCCCACTCACCAACTGCAGGAAAAAACACCAGGCCGTACAAGATCTACCACAGC
CAACACATTTGTGGGAGCAGGAGACAACATTTCAATTGGATCAGATCACTGCTCTGAGTACAGTGTCAA
ACCAATAACAAGTACAGCAACAGCCATTTCTGAGAGTACGTTTTTCTGTTGTGAGTACGCTCAGGACC
CACATCAGGGGTAAGTGCAGAGTTGCTATGACAGCGGGCTGGAGGAGTACAGAAACCAAGCAGTAAGAG
TTCATCAGGGCAAGACTGGGTGCGCTTCCACTCCAGAGGACAACATGAAAGGACCACGCCGGATGGC
AGTGTGGTGGGAGGAGCAGATATGGAAAATGATTCAAGGCCTCTCCAGATGTAGCCCTGACTGGGAAGT
GCACTCGTGTGATGAGTATGGCCACTCAGACTCCTGCTGGATGCCGGTCCGCACTTCTCCGGAGAG
GAAGAAGAGCCAGCCTAACTGTCCACTTTCATGCCTGTTGATGAACGAGGAAGCCAGGAAAAGCTGGCC
AATGGGGAGGCCCATCATGGGTGACCGCAACAGAAACCTCCTGAACAAAAAGTTGACCTCATCCTATG
AGACCTTCAGTGCAGTATTTTACGAAAAATGAGGAAGCAACCCCTGAGGATATCCCCTTACAAAAAC
AGGGGAATATAAGCCATCTCCTGTCAATACTCTACTAGAAGAGAAGTTTACCTG

ACGCGTACGCGGCCGCTCGAGCAGAACTCATCTCAGAAGAGGATCTGGCAGCAATGATATCCTGGATT
ACAAGGATGACGACGATAAGGTTTAA

Protein Sequence: >RC230683 representing NM_001173523
 Red=Cloning site Green=Tags(s)

MLRMRTAGWARGWCLGCCLLLPLSLSLAAAKQLLRYRLAEEGPADVIRIGNVASDLGIVTGSGEVTFLES
 GSEYLKIDNLTGELSTERRIDREKLPQCQMIFDENECFLDFEVSIVIGPSQSWVDFEGQVIVLDINDNT
 PTFPSPVLTLTVEENRPVGTLYLLPTATDRDFGRNGIERYELLQEPGGGGSGGESRRAGAADSAPYPGGG
 GNGASGGGSGGSKRRDLASEGGGGTNPGGRSSVFELQVADTPDGEKQPQLIVKGALDREQRDSYELTLRV
 RDGGDPPRSSQAILRVLITDVNDNSPRFEKSVYEADLAENSAPGTPILQLRAADLDVGVNGQIEYVFGAA
 TESVRRLLRLDETSGLSVLHRIDREEVNLRFVTVMARDRGPQPKTDKATVVLNIKDENDNVPSIEIRKI
 GRIPLKDGVANVAEDVLDVTPIALVQVSDRDQGENGVVCTVVGDVVPFQLKSPASDTEGDQNKKYFLHTS
 TPLDYEATREFNVVIVAVDSGSPSLSSNNSLIVKVGDTNDNPPMGQSVVEVYFPENNIPGERVATVLAT
 DADSGKNAEIAVSLDSSVMGIFAIDPDSGDILVNTVLDREQTDREYEFKVNADKGIPLVQGGSTTVIVQVA
 DKNDNDPKFMQDVFTFYKKNLQPNSPVGMVTVMADKGRNAEMSLYIEENNNIFSIENDGTIYSTMSF
 DREHQTTYFRVKAVDGGDPPRSATATVSLFVMDENDNAPTITLTKNISYTLPPSSNVRTVVATVLATD
 SDDGINADLNYSIVGGNPFKLEIDPTSGVVSIVGKLTQKHVGLHRLVVQVNDSGQPSQSTTTLVHVFN
 ESVSNATAIDSQIARSLHIPLTQDIAGDPSYEISKQRLSIVIGVVAGIMTVILILIVVMARYCRSKNKN
 GYEAGKKDHEDFFTPQQHDKSKKPKDKKKNKSKQPLYSSIVTVEASKPNQRYDSVNEKLSDSPSMGRY
 RSVNNGGSPDLARHYKSSSPLPTVQLHPQSPTAGKKHQAVQDLPPANTFVGAGDNISIGSDHCSEYSCQ
 TNNKYSKQPFRRVTFVSVSQPDPHQGSLQSCYDSGLEESETPSSKSSSGPRLGALPLPEDNYERTTPDG
 SVGEAEHMENDSRPLPDVALTGKCTRECDEYGHSDSCWMPVRTSPERKKSQPKLSTFMPVDERGSEQELA
 NGEAAIMGDRNRNLLNKKLTSSYETFSAASFKNEEANPEDIPLTKTGEYKPSPVNTLTRREYVL

TRTRPLEQKLISEEDLAANDILDYKDDDDKV

Chromatograms: https://cdn.origene.com/chromatograms/mg4624_c01.zip

Restriction Sites: SgfI-MluI

Cloning Scheme:

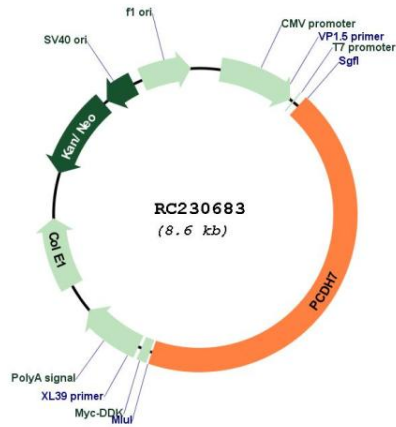


ACCN: NM_001173523

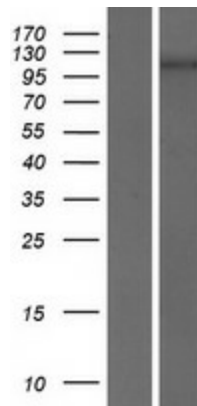
ORF Size: 3765 bp

OTI Disclaimer:	The molecular sequence of this clone aligns with the gene accession number as a point of reference only. However, individual transcript sequences of the same gene can differ through naturally occurring variations (e.g. polymorphisms), each with its own valid existence. This clone is substantially in agreement with the reference, but a complete review of all prevailing variants is recommended prior to use. More info
OTI Annotation:	This clone was engineered to express the complete ORF with an expression tag. Expression varies depending on the nature of the gene.
Components:	The ORF clone is ion-exchange column purified and shipped in a 2D barcoded Matrix tube containing 10ug of transfection-ready, dried plasmid DNA (reconstitute with 100 ul of water).
Reconstitution Method:	<ol style="list-style-type: none">1. Centrifuge at 5,000xg for 5min.2. Carefully open the tube and add 100ul of sterile water to dissolve the DNA.3. Close the tube and incubate for 10 minutes at room temperature.4. Briefly vortex the tube and then do a quick spin (less than 5000xg) to concentrate the liquid at the bottom.5. Store the suspended plasmid at -20°C. The DNA is stable for at least one year from date of shipping when stored at -20°C.
RefSeq:	NM_001173523.1 , NP_001166994.1
RefSeq ORF:	3768 bp
Locus ID:	5099
Cytogenetics:	4p15.1
Protein Families:	Druggable Genome, Transmembrane
MW:	137 kDa
Gene Summary:	This gene belongs to the protocadherin gene family, a subfamily of the cadherin superfamily. The gene encodes a protein with an extracellular domain containing 7 cadherin repeats. The gene product is an integral membrane protein that is thought to function in cell-cell recognition and adhesion. Alternative splicing yields isoforms with unique cytoplasmic tails. [provided by RefSeq, Jul 2008]

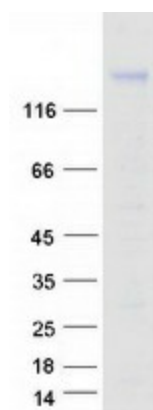
Product images:



Circular map for RC230683



Western blot validation of overexpression lysate (Cat# [LY433682]) using anti-DDK antibody (Cat# [TA50011-100]). Left: Cell lysates from untransfected HEK293T cells; Right: Cell lysates from HEK293T cells transfected with RC230683 using transfection reagent MegaTran 2.0 (Cat# [TT210002]).



Coomassie blue staining of purified PCDH7 protein (Cat# [TP330683]). The protein was produced from HEK293T cells transfected with PCDH7 cDNA clone (Cat# RC230683) using MegaTran 2.0 (Cat# [TT210002]).