

Product datasheet for RC230681

FAM21C (WASHC2C) (NM_001169107) Human Tagged ORF Clone

Product data:

Product Type:	Expression Plasmids
Product Name:	FAM21C (WASHC2C) (NM_001169107) Human Tagged ORF Clone
Tag:	Myc-DDK
Symbol:	FAM21C
Synonyms:	FAM21A; FAM21C; VPEF
Mammalian Cell Selection:	Neomycin
Vector:	pCMV6-Entry (PS100001)
E. coli Selection:	Kanamycin (25 ug/mL)
ORF Nucleotide Sequence:	>RC230681 representing NM_001169107 Red=Cloning site Blue=ORF Green=Tags(s)

TTTTGTAATACGACTCACTATAGGGCGGCCGGAATTCGTCGACTGGATCCGGTACCGAGGAGATCTGCCGCCCGATCGCC

ATGATGAACCGGACGACCCCGACCAGGAGCTGGTGCCGGCGTCGGAGCCCGTGTGGGAGCGGCCGTGGT
CGGTGGAGGAGATCCGCAGGAGCAGCCAGAGCTGGTCGCTGGCGGCCGACGCGGGCTACTACAGTTTCT
ACAGGAATTCTCACAGCAAATCTCTAGGACCCATGAAATCAAGAAACAAGTGGACGGACTAATCCGG
GAAACCAAAGCCACAGATTGTCGCTGCATAATGTCTTCAATGACTTCCTTATGCTCTCTAATACCCAGT
TCATAGAGAATCGTGTATATGATGAAGAAGTGGAGGAGCCAGTCAAGGCTGAGGCAGAAAAACAGA
GCAGGAGAAGACACGAGAGCAGAAAAGAAGTAGATCTCATTCTAAAGTCCAGGAGGCTGTGAACTATGGC
TTACAAGTATTGGACAGTGCCTTTGAGCAACTTGATATCAAAGCAGGAACTCAGACTCCGAGGAAGATG
ATGCTAATGGGCGGGTGGAACTGATCCTTGAACCAAAGGATCTATACATTGATCGTCCTTTACCATATCT
CATTGGGTCAAAGCTGTTTCATGGAACAAGAAGATGTAGGTCTTGGAGAGCTGTCCAGTGAAGAAGGCTCT
GTAGGCAGTGATCGTGCCAGTATTGTGGACACTGAGGAAGAGAAAAGAAGAGGAGGAGTCAAGTGAAGATT
TTGCCATCACAGTGACAATGAACAAAACCAGCACACCACAAAATGAGTGATGAGGAAGAGGATGATGA
TGGCTGTGACCTTTTGGCTGACTCTGAGAAGGAGGAGGAAGATATTGAGGACATTGAAGAAAATACTAGA
CCTAAAAGAAGCAGACCTACATCGTTTGCAGATGAGCTGGCTGCCCGCATCAAGGGGGATGCCATGGGTC
GAGTGGACGAGGAGCCGACAAATGAAGAGGATAACTTATTGACACCCCAAGCTGACCGACGAGGACTT
CTCGCCATTTGGCTCTGGAGGTGGCCTGTTCAAGTGGCGCAAGGGGCTATTTGATGATGAGGACGAGGAG
AGTGACCTCTTACGGAAGCCTCCAGGATCGGCAAGCTGGAGCCTCTGTTAAGGAGGAGTCTTTCATCAT
CCAAACCTGGAAGAAAAATCCCAGCAGGAGCTGTTTCTGTATTTTAGGAGACACGGATGTGTTGGTGC
TGCCTCCGTTCCATCACTGAAGGAGCCACAGAAGCCTGAGCAGCCACTCCAAGGAAAAGCCCTATGGT
CCCCCTCCACTGGCCTCTTTGATGATGATGATGGTATGATGATGACGACTTTTTCTCGGCACCCCA
GCAAACCTTCTAAAACACGCAAAGTCCAATCCACTGCCGATATCTTTGGTACGAAAGAAGGAGATCTGTT
CAAAGAAAAGCCGTAGCATCGCCAGAAGCCACTGTGAGTCAGACAGATGAAAATAAAGCAAGAGCAGAA



[View online »](#)

AAAAAGGTTACCTTATCTTACAGCAAAAATCTCAAGCCCTCATCAGAAACAAAGACTCAAAAAGGCTTAT
TTTCAGATGAGGAGGACTCTGAGGATTTGTTTTCTTCTCAAAGTGCGAGTAACTTAAAAGGTGCATCTCT
GCTGCCTGGCAAGCTCCCCACGTCGGTTTTCCCTGTTTGTATGATGAAGATGAAGAGGATAATCTTTTTGGG
GGTACAGCTGCTAAGAAGCAGACATTGTCTCTACAAGCTCAGAGAGAAGAGAAAGCAAAGCCTCCGAGC
TCTCCAAAAAGAAAGCATCTGCCTGTGTTCAGCAGTGATGAGGAGGACCAGTGAATATTCTGCTTC
ACAGACCCACTTAGCATCTGACAGCAGGTCTAAGGAGAACCAGGGATTCTGGGACCTCCAGAGCCAG
GAGGCCAAGGCTGTGAAAAAGACCAGTCTTTTGGGAAGACAAAGAAGATGATCTTTTTGCCATTGCCA
AGGACAGCCAAAAAGAAGACCAGAGAGTGTCACTCCTCTTTGAAGACGATGTTGATAGCGGAGGCTCTCT
GTTTGGCTCTCCTCCACATCTGTTCTCTGCAACAAAGGAAGGACTTTTTGACTAGATCTGCTCAGGAA
ACAGTCAAGCATTCTGATTTATTTTCTTCATCATCCCCATGGGACAAAGGAACCAAGCCTAGAACAAAA
CTGTTCTTAGCTTGTGTTGATGAGGAAGAGGATAAAATGGAAGATCAAACATTATCCAGGCTCCACAGAA
AGAAGTAGGAAAGGGCTGCGATCCTGATGCCACCCCAAGAGCACAGGTGTCTTCCAGGATGAAGAGCTG
CTTTTCAGCCACAAGCTCCAAAAGGACAATGACCCAGATGTTGACCTTTTTGCTGGCACCAAAAAACCA
AGCTGTTAGAGCCAAGTGTGGGAGCCTGTTGGGGATGATGAAGATGATGATCTTTTCAGCTCTGCCAA
GTCCCAGCCTTTGGTACAAGAGAAAAAGAGAGTAGTAAAAAAGACCCTCTGTTAACTCTTTCAAAAAC
CAGAAACATCCTGAATCCATTCAAGGTAGTAAAGAAAAAGGCATATGGAAGCCGGAACACCTCAGGCAA
ATTTAGCGATCAACCCAGCGGCCTTGTGCCACAGCGGCTTCCAGATCTCTGAAGTAAAGCCTGTTTT
GCCAGAATTGGCTTTTCTTTCATCTGAACACAGAAGGAGCCACGGTCTGGAAAGTGTGCCTGTCTTCCC
GGGAGTGGGGAGGCCGGTGTGAGTTTTGATCTTCCAGCTCAGGCAGACACCTTACACAGTGCAAACAAGA
GCCGTGTCAAGATGAGAGGGAAGCGTAGACCCGAGACCCGTGCAGCTAGGCGGCTGGCTGCTCAGGAGTC
CAGCGAGGCTGAGGACATGAGCGTCCCCAGAGGCCATTGCACAGTGGGCTGATGGCGCCATTTCCCA
AATGGCCATCGGCCACAGCTCAGAGCAGCCAGTGGAGAAGACAGCACTGAGGAGGCCCTGGCAGCTGCCG
CTGCACCTTGGGAAGGTGGTCTGTGCCTGGAGTGGACACAAGCCCTTTGCAAAGTCTCTGGGTATT
CAGAGGGGAGGCTGACCTTTTTGATTCTGGGACATTTTTTCCAGGGCACTGGATCTCAGTCCGTGGAG
AGAACAAAAACCAAGGCAAAGATAGCAGAGAATCCTGCCAACCCACAGTGGGTGGTAAAGCAAAGAGCC
CCATGTTTCTGCTCTAGGCGAGGCCAGCAGTGATGATGATCTTTTCAGTCTGTAAACCAAAAACCAGC
AAAGAAAACAAATCCCTTCTCCTGGAAGATGAGGATGACCTCTTTACAGATCAGAAAAGTCAAGAAG
AATGAGACAAAATCCAGTAGTCAGCAGGATGTCATATTAACAACACAAGATATTTTTGAGGATGATATAT
TTGCTACGGAAGCAATTAACCCCTCAGAAAACCAGAGAGAAGGAGAAAAACATTGGAATCTAATTTATT
TGATGATAACATTGATATCTTTGCTGACTTAACTGTAAAACAAAAGAAAAGTCCAAAAAGAAAGTGGAA
GCCAAGTCTATATTTGATGATGATATGGATGACATCTTCTCCACTGGTATCCAGGCTAAGACAACCAAC
CAAAAAGCCGATCTGCACAGGCCGACCTGAACCAAGATTTGAACACAAGGTGTCCAACATCTTTGATGA
TCCCCTGAATGCCTTTGGAGGCCAG

ACGCGTACGCGGCCGCTCGAGCAGAACTCATCTCAGAAGAGGATCTGGCAGCAATGATATCCTGGATT
ACAAGGATGACGACGATAAGGTTTAA

Protein Sequence: >RC230681 representing NM_001169107
 Red=Cloning site Green=Tags(s)

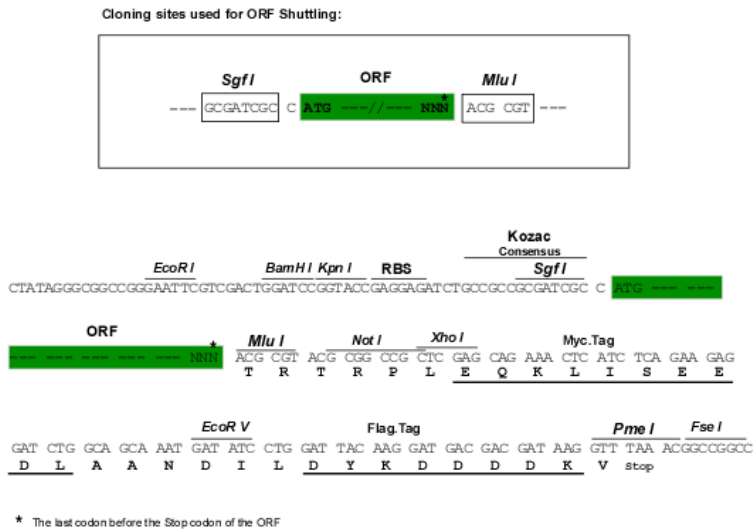
```
MMNRTPDQELVPASEPVWERPWSVEEIRRSSQSWSLAADAGLLQFLQEFSSQQTISRTHEIKKQVDGLIR
ETKATDCRLHNVFNDFLMLSNTQFIENRVYDEEVEEPVLKAEAEKTEQEKTREQKEVDLIPKVQEAVNYG
LQVLDSAFEQLDIKAGNSDSEDDANGRVELILEPKDLYIDRPLPYLIGSKLFMEQEDVGLGELSSEEGS
VGSDRGSIVDTEEEKEEEEEDEDFAHHSNEQNQHTTQMSDEEEDDDGCDLFDSEKEEEDIEDIEENTR
PKRSRPTSFADELAARIKGDAMGRVDEEPTNEEDNLFAPPKLTDEDFSPFGSGGGLFSGGKGLFDDDEE
SDLFTEASQDRQAGASVKEESSSSKPGKKIPAGAVSVFLGDTDFVGAASVPSLKEPQKPEOPTPRKSPYG
PPPTGLFDDDDGDDDDFFSAPHSKPSKTRKVQSTADIFGDEEGDLFKEKAVASPEATVSQTDENKARAE
KKVTLSSYKNLKPSETKTQKGLFSDSEEDSLFSSQSASNLKASLLPGKLPVSVLFDDEDEEDNLF
GTAACKQTL SLQAQREEKAKASELSKKKASALLFSSDEEDQWNIPASQTHLASDSRSKGEPRDSGLTQSQ
EAKAVKKTSLFEEDKEDDLFAIAKDSQKKTQRVSLLFEDDVSDDGSLFGSPPTSVPPATKEGLL TRSAQE
TVKHSDFLSSSSPWDKGTKPRKTVLSLFDDEEDKMEDQNI IQAPQKEVKGKCDPAHDKSTGVFQDEEL
LFSHLKQKDNPDVDL FAGTKTKLLEPSVGLFGDDEDDDLFSSAKSQPLVQEKRVVKKDHSVNSFKN
QKHPESIQGSKEKGIWKPETQANLAINPAALLPTAASQISEVKPVLPELAFPSSEHRRSHGLESVPVLP
GSGEAGVSFDLPAQADTLHSANKSRVKMRGRRPQTRARRLAAQESSEEDMSVPRGPIAQWADGAISP
NGHRPQLRAASGEDSTEEALAAAAPWEGGPVPGVDTSPFAKSLGHSRGEADLFDSDGIFSTGTGSQSV
RTKPKAKIAENANPPVGGKAKSPMFPALGEASSDDDLFQSAKPKPAKKNPFLLEDDDLFTDQKVKK
NETKSSSQDQVILTTQDIFEDDIFATEAIKPSQKTREREKTLKSNLFDNIDIFADLTVKPKKSKKKVE
AKSIFDDDDMDDIFSTGIQAKTTKPKSRSQAAPPEPRFEHKVSNIFDDPLNAFGGQ
```

TRTRPLEQKLISEEDLAANDILDYKDDDDKV

Chromatograms: https://cdn.origene.com/chromatograms/mk8036_e06.zip

Restriction Sites: SgfI-MluI

Cloning Scheme:

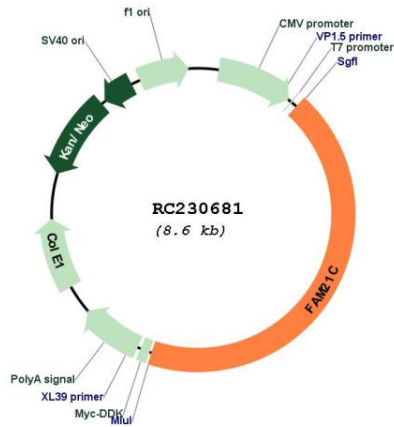


ACCN: NM_001169107

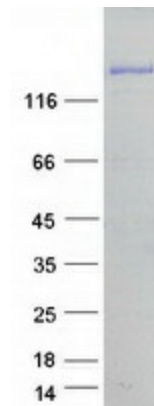
ORF Size: 3735 bp

OTI Disclaimer:	The molecular sequence of this clone aligns with the gene accession number as a point of reference only. However, individual transcript sequences of the same gene can differ through naturally occurring variations (e.g. polymorphisms), each with its own valid existence. This clone is substantially in agreement with the reference, but a complete review of all prevailing variants is recommended prior to use. More info
OTI Annotation:	This clone was engineered to express the complete ORF with an expression tag. Expression varies depending on the nature of the gene.
Components:	The ORF clone is ion-exchange column purified and shipped in a 2D barcoded Matrix tube containing 10ug of transfection-ready, dried plasmid DNA (reconstitute with 100 ul of water).
Reconstitution Method:	<ol style="list-style-type: none">1. Centrifuge at 5,000xg for 5min.2. Carefully open the tube and add 100ul of sterile water to dissolve the DNA.3. Close the tube and incubate for 10 minutes at room temperature.4. Briefly vortex the tube and then do a quick spin (less than 5000xg) to concentrate the liquid at the bottom.5. Store the suspended plasmid at -20°C. The DNA is stable for at least one year from date of shipping when stored at -20°C.
RefSeq:	NM_001169107.2
RefSeq ORF:	3738 bp
Locus ID:	253725
UniProt ID:	Q9Y4E1
Cytogenetics:	10q11.22
MW:	137 kDa
Gene Summary:	Acts at least in part as component of the WASH core complex whose assembly at the surface of endosomes inhibits WASH nucleation-promoting factor (NPF) activity in recruiting and activating the Arp2/3 complex to induce actin polymerization and is involved in the fission of tubules that serve as transport intermediates during endosome sorting. Mediates the recruitment of the WASH core complex to endosome membranes via binding to phospholipids and VPS35 of the retromer CSC. Mediates the recruitment of the F-actin-capping protein dimer to the WASH core complex probably promoting localized F-actin polymerization needed for vesicle scission (PubMed:19922874, PubMed:20498093, PubMed:22513087, PubMed:23331060). Via its C-terminus binds various phospholipids, most strongly phosphatidylinositol 4-phosphate (PtdIns-(4)P), phosphatidylinositol 5-phosphate (PtdIns-(5)P) and phosphatidylinositol 3,5-bisphosphate (PtdIns-(3,5)P2). Involved in the endosome-to-plasma membrane trafficking and recycling of SNX27-retromer-dependent cargo proteins, such as GLUT1 (PubMed:25278552). Required for the association of DNAJC13, ENTR1, ANKRD50 with retromer CSC subunit VPS35 (PubMed:24980502). Required for the endosomal recruitment of CCC and retriever complexes subunits COMMD1 and CCDC93 as well as the retrievere complex subunit VPS35L (PubMed:25355947, PubMed:28892079). [UniProtKB/Swiss-Prot Function]

Product images:



Circular map for RC230681



Coomassie blue staining of purified WASHC2C protein (Cat# [TP330681]). The protein was produced from HEK293T cells transfected with WASHC2C cDNA clone (Cat# RC230681) using MegaTran 2.0 (Cat# [TT210002]).