

Product datasheet for **RC230670**

IQSEC3 (NM_001170738) Human Tagged ORF Clone

Product data:

Product Type: Expression Plasmids
Product Name: IQSEC3 (NM_001170738) Human Tagged ORF Clone
Tag: Myc-DDK
Symbol: IQSEC3
Mammalian Cell Selection: Neomycin
Vector: pCMV6-Entry (PS100001)
E. coli Selection: Kanamycin (25 ug/mL)
ORF Nucleotide Sequence: >RC230670 representing NM_001170738
Red=Cloning site Blue=ORF Green=Tags(s)

TTTTGTAATACGACTCACTATAGGGCGGCCGGGAATTCGTCGACTGGATCCGGTACCGAGGAGATCTGCC
 GCCCGATCGCC

ATGGAGAGCCTGCTGGAGAATCCGGTGCAGCCGCTGCTACCTCAAGGAGCTCACGGCCATCGTGCAGA
 ACCAGCAGAGCCTCATCCACACCCAGCGAGAGCGTATCGACGAGCTGGAGCGGGCTGGACGAGCTGAG
 CGCTGAGAACCGCAGCCTGTGGGAGCACCAGCAGCTGTGCAAGCCAGCCTCCGCCCGGGCTCGTCCCC
 CCGTCATCGGCCCGCTGCCGGCCGCTCCGGCCACCGCTCCTGCCGCCCGCCAGGGCCAGAACCTC
 TCCAGGACCAAGGACAGCGCTCAGCAGCCGCGCCGCATCCCGGCCGATCGGCCCGCGCTCAGACCA
 CGGACAGCTCCTGGAGCAGCCCCAGCGGGCCCTGGCAGCAGGGCTCACACACCCAGTCGCCCCACAAG
 CATCTGGGGACACAAGGGCCGTGACTGACAAGGAGAAGGAGCGTCCCCCGAGTTGCTGCGCTGCTGCCG
 GAGCCCTCCTCAGCACAAATCCCCCTCCGCCCTCGGCAAGGGCGTCTGAGCAGGAGACCTGAGAATGA
 GACCGTGTGCACCAGTTCTGCTGCCAGCCGCGCAGCCTGCTCCGACCTGGCTCCCAAAGTGATGGC
 TCCTGCACCCAGGCCGTGGGGCATGGAGACTCCGTGGTGGCAGCGGGCGGTGGCAGCCGGCAGAC
 CCAGTGCCCATGCCCGAAGGCTCAAGCCAGGAGCTGCAGGAGGAGGAGGAGCGGCCGGGGCAGGGGC
 TGCTCCCAAGGGCTGGCCCCAGCACAAGGCCCTCCCCGGCCGCGCAGCAGCTGCCCTGGCAGCGCG
 CTGTGCCCCACGCCCTGCCGCTCCGATTACGAACTCTCCCTTGACCTAAAGAATAAACAGATTGAAA
 TGCTAGAACATAAGTACGGCGGTCACTGGTGTCCCGGCGCGCCGTTGCACCATCCAAACCGCCTTCCG
 CCAATACCAGCTCAGCAAGAACTTCGAGAAAATCCGCAACTCGCTTCTGGAGAGCCGCTGCCACGGCGG
 ATCTCCCTGCGCAAGGTGCGGTCAACCCAGCGCCGAGAGCCTGGCGGCCGAGAAAGCGCTCATGGAGGGCT
 ACGGCCTCGTGGGGCTGCCGCTGGTGGCTCGCCCTCCCTGCCGCCACCTTCGACAGGCACCTCACCGA
 GCTGGAGGACTCCTTACCGAGCAGGTGCAATCCCTGGCCAAAGTCCATCGACGACGCGCTCAGCAGTGG
 AGCCTCAAGACCATGTGCTCCCTGCGGGAGAGTGGCGTTACCAGCTCCACCAGGCCCTGCAGGCGGCCG
 CGGGCCCCCAGGCCTGGAGGCCGAGGGCGGGCGCCGGAGAGCGCGGGCCCCGGGCCCGGGGATGACGC
 CGCGGAGACCCCGCCCTGCCCGGCCACAGCGGGACCCTCATGATGGCTTTCCGGGACGTCAAGGTG
 CAGATCGCCAACCAAGAACATATCCGTCTCCTCCTCCACGCTCTGTCCGGTGGCCAACTGCCTGGCGCTC
 AGACGGTCCAGGCCCCCGCAGAGCCCGGGCGGGCAAGGCCGAGCAGGGCAGACCTCTGGCGGGAGGC



[View online »](#)

CCCGAAGCCCCCGCGTGGGCCGGGAGGACGCGTCAGCCGAGGACTCATGCGCAGAGGCTGCGGCTAGT
GGGGCGCGGATGGGGCCACAGCCCCAAAACAGAGGAGGAAGAGGAGGAGGAGACGGCGGAGGTGG
GGAGAGGGGCGAGGCCGAGGCAGGCGACTTGGAGCAGCTGAGCAGCAGCAGCAGTCCACCAAGTCCGC
CAAGTCAGGCTCGGAGGCGTCCGCCTCCAAGGACGCCCTGCAGGCCATGATCCTGAGCCTGCCG
CGTACCACTGCGAGAACCAGCCAGCTGCAAGTCGCCACGCTCTCCACCGACACCCTGCGCAAGCGGC
TCTACCGCATCGGCCTCAACCTTTCAACATAAACCCCGACAAGGGCATCCAGTTCTGATCTCACGGCG
CTTCATCCCGGACACCCCATCGGTGTGGCCATTTCTCTCCAGCGAAAGGGCCTCAGCCGCCAGATG
ATTGGAGAGTTCTTGGCAACAGCAAGAAGCAGTTCAACCGCAGCTGCTGGACTGCGTGGTGGACGAGA
TGGACTTCTCCAGCATGGAGCTGGACGAGGCCCTGCGCAAGTTCCAGGCACACATCCGTGTGACGGGGA
GGCTCAGAAGGTGGAGCGGCTCATTGAGGCCTTACGCCAGCGCTACTGCATGTGCAACCCGAAAGTGGT
CAGCAGTTCACAACCCGACACCATCTTCATCTCGCCTTCGCCATCATCTCTCAACACCGACATGT
ACAGCCCCAACATCAAGCCTGACCGGAAGATGATGCTGGAGGACTTCATCCGAAACCTTCGAGGTGTGA
CGATGGCGCTGACATCCCAGGGAGCTGGTGGTAGGCATCTATGAGAGGATACAGCAGAAGGAGCTCAAG
TCCAATGAGGACCAGTCACGTACGTACCAAGGTGGAGAAGTCCATTGTGGCATGAAGACAGTGTGT
CCGTGCCCCACCGCCGCTGGTGTGCTGCAGCCGGCTCTTCGAGGTGACGGATGTGAACAAGCTGCAGAA
GCAGGCAGCGCATCAGAGGGAGGTTCCTCTTAATGACCTGCTGGTGATTCTCAAACCTTTCGCCGAAG
AAGAAGAGCTCCTCCACGTACACCTTTTCAAGTCAGTTGGCCTGCTGGGCATGCAGTTCACGCTCTTTG
AGAACGAGTATTACTCTCATGGCATCACACTGGTGACCCCGCTCTCGGGCTCCGAGAAGAAGCAGGTGCT
GCATTTCTGTGCCCTGGGCTCGGACGAGATGCAGAAGTTCGTGGAGGACCTGAAGGAGTCCATTGCTGAG
GTGACGGAGCTGGAGCAGATCCGAATAGAGTGGGAGCTGGAGAAGCAGCAGGGAACAAAGACACTCTCT
TCAAGCCCTGCGGAGCCAGGGGACCCACAGTCAAAGCAAGGATCGCCGACAGCCAAAAGGGAAGCCGC
GCTCAGGGAGAGCCGGCGGAGAGCACGGTGGAGGTGTCAATTCACAACAGGCTTCAAACGTCCCAGCAC
AACTCCGGCTGGGGCCGAGAGGGGAGCGCGGTGCCGCGCCAGACCTGCAGCCTAGCCCCCGAGAC
AGCAGACCCCAACACTGCCCGCCGCCACCCACGCCCCCGGGCACCTGGTGCAGTGCCAGCAAATTGT
CAAGGTATTGTCTGGACAAGCCCTGCCTGGCCGCATGGAGCCCTGCTGAGCCAGGCTCTCTCTGCTG
TACACCTCGTCTCTGACTCCTGCGGCTCCACACCCCTGGCGGTCCCGGCTCTCCGGTCAAGGTCA
CCCACAGCCTCCGCTGCCCCCGCCCCACCCCTACAACCACCTCACCAGTTCTGTCCCCAGGCTC
CCTGCTGCACGGGACCGCTACTCCAGTGGCTCAAGGAGCCTGGT

AGCGGACCGACGCGTACGCGGCCGCTCGAGCAGAAACTCATCTCAGAAGAGGATCTGGCAGCAAATGATATCC
TGGATTACAAGGATGACGACGATAAGGTTTAA

Protein Sequence: >RC230670 representing NM_001170738
 Red=Cloning site Green=Tags(s)

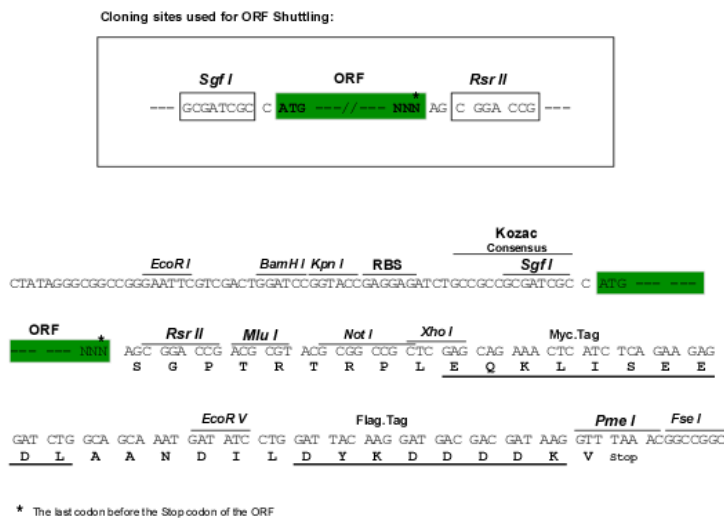
```
MESLLENPVRAVLYLKELTAIVQNQQSLIHTQRRERIDELERRLDEL SAENRSLWEHQQLLQAQPPPGLVP
PSSAPLPAAPATAPAAAAAQEPLQDQQRSAAPHPAPDRPPRQHGGQLLEQPQRGPGSRAHTPQSPHK
HLGTQGA VTDKEKERPPSCCAAAGALLQHKSPSALGKGVLSRRPENETVLHQFCCPAADACSDLASQSDG
SCTQAGGGMEDSVVAAA AAGRPSAHAPKAQAQELQEEEEERPGAGAASPRAGPQHKASPRGRQPALATA
LCPHAPAASDYELSLDLKNQIEMLEHKYGGHLVSRRAACTIQTAFRQYQLSKNF EKIRNSLLESRLPRR
ISLRKVRSPTAESLAAEKALMEGYGLVGLPLVRSPSLPPTFAGTLTELEDSFTEQVQSLAKSIDDALSTW
SLKTMCSLRESGAYQLHQALQAAAGPPGLEAEGRAPESAGPGPGDDAAETPGLPPAHSGTLMMAFRDVTV
QIANQNISVSSSTALSVANCLGAQTVQAPAEPAAAGKAEQGETSGREAPEAPAVGREDA SAEDSCAEAAA
GAADGATAPKTEEEEEEEETA EVGRGAEAEAGDLEQLSSSSTSTKSAKSGSEASASASKDALQAMILSLP
RYHCENPASCKSPTLSTDTLRKRLYRIGLNLFNINPDKGIQFLISRGFIPDTPIGVAHFLLRKGLSRQM
IGEF LGNSKKQFNRDVLDVVDMD FSSMELDEALRKFQAHIRVQGEAQKVERLIEAFSQR YCMCNPEVV
QQFHNPDTIFILAF AII LLNTDMYSPNIKPDRKMML ED F IRNLRGVDDGADIPRELVVGIYERIQKELK
SNEDHVTYVTKVEKSI VGMKTVLSVPHRRLVCCSRLFEVTDV NKLQKQAAHQREVF LFNDDLVLILK LCPK
KKSSSTYTFCKSVGLLGMQFQLFENEY YSHGITLVTPLSGSEKKQVLHFCALGSDEM QKFVEDLKESIAE
VTELEQIRIEWELEKQQGTKLSFKPCGAQGD PQSKQGSPTAKREALRERPAESTVEVS IHNRLQTSQH
NSLGLGAERGAPVPPDLQSPPRRQQT PPLPPPPPTPPGTLVQCQQIVKVI VLDPKCLARMEPLLSQALSC
YTSSSSDSCGSTPLGGPGSPVKVTHQPPLPPPPPPY NHPHQFCPPGSL LHGHRYSSGSRSLV
```

SGP TRRRLEQKLI SEEDLAANDILDYKDDDDKV

Chromatograms: https://cdn.origene.com/chromatograms/mk8036_e08.zip

Restriction Sites: Sgfl-RsrII

Cloning Scheme:

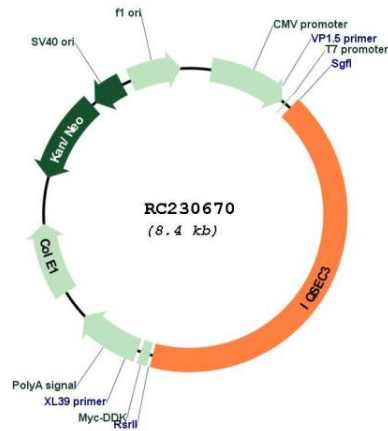


ACCN: NM_001170738

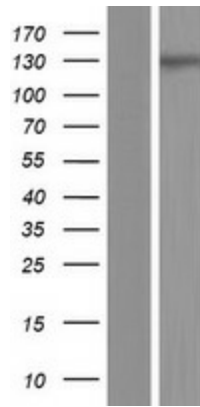
ORF Size: 3546 bp

OTI Disclaimer:	The molecular sequence of this clone aligns with the gene accession number as a point of reference only. However, individual transcript sequences of the same gene can differ through naturally occurring variations (e.g. polymorphisms), each with its own valid existence. This clone is substantially in agreement with the reference, but a complete review of all prevailing variants is recommended prior to use. More info
OTI Annotation:	This clone was engineered to express the complete ORF with an expression tag. Expression varies depending on the nature of the gene.
Components:	The ORF clone is ion-exchange column purified and shipped in a 2D barcoded Matrix tube containing 10ug of transfection-ready, dried plasmid DNA (reconstitute with 100 ul of water).
Reconstitution Method:	<ol style="list-style-type: none">1. Centrifuge at 5,000xg for 5min.2. Carefully open the tube and add 100ul of sterile water to dissolve the DNA.3. Close the tube and incubate for 10 minutes at room temperature.4. Briefly vortex the tube and then do a quick spin (less than 5000xg) to concentrate the liquid at the bottom.5. Store the suspended plasmid at -20°C. The DNA is stable for at least one year from date of shipping when stored at -20°C.
RefSeq:	NM_001170738.2
RefSeq ORF:	3549 bp
Locus ID:	440073
UniProt ID:	Q9UPP2
Cytogenetics:	12p13.33
Protein Pathways:	Endocytosis
MW:	128.1 kDa
Gene Summary:	Acts as a guanine nucleotide exchange factor (GEF) for ARF1.[UniProtKB/Swiss-Prot Function]

Product images:



Circular map for RC230670



Western blot validation of overexpression lysate (Cat# [LY433669]) using anti-DDK antibody (Cat# [TA50011-100]). Left: Cell lysates from untransfected HEK293T cells; Right: Cell lysates from HEK293T cells transfected with RC230670 using transfection reagent MegaTran 2.0 (Cat# [TT210002]).