

Product datasheet for RC230657

GOLGA3 (NM_001172557) Human Tagged ORF Clone

Product data:

Product Type:	Expression Plasmids
Product Name:	GOLGA3 (NM_001172557) Human Tagged ORF Clone
Tag:	Myc-DDK
Symbol:	GOLGA3
Synonyms:	GCP170; MEA-2
Vector:	pCMV6-Entry (PS100001)
E. coli Selection:	Kanamycin (25 ug/mL)
Cell Selection:	Neomycin
ORF Nucleotide Sequence:	>RC230657 representing NM_001172557 Red=Cloning site Blue=ORF Green=Tags(s)

TTTTGTAATACGACTCACTATAGGGCGGCCGGAAATTCGTCGACTGGATCCGGTACCGAGGAGATCTGCC
GCCGCGATCGC

ATGGACGGCGCGTCGGCCGAGCAAGATGGCCTCCAGGAGGACAGATCCCACAGTGGCCCTCGTCTCTCC
CCGAGGCCCACTGAAGCCCCGGGCCACTGGTGCCACCTGACCAGCAGGACAAAGTCCAGTGTGCCGA
GGTAAACAGAGCATCCACGGAAGGGAAAGCCCGATGGACCTGGCCAGGAGGCCTCTGTCAGAACGGG
CCAACGCCACCCTTCCCAGACCTCCGTCGTCTCTCGATCCCACCACAAGCCAGTGGGCCCTGATGCCT
CTCCAGGTGTGGCTGGTTTCCATGACAACCTAAGGAAGTCTCAGGGAAGTCTAGTGTGAGGGCAGTGTAG
AAAAGAAGCTTTGCAGTCTCTCAGACTCAGTCTTCTATGCAAGAAAACGCAACTGTGCTCTACAGATTCT
CCCCTGCCCTGGAGAAGGAGGAGCAGGTCCGACTTCAGGCTCGGAAGTGGTGGAAAGAGCAGCTCAAAC
AGTACAGGGTGAAGCGCCAGCAGGAGAGGTCCAGTCAACCTGCAACAAAACGAGACTTTTTAGCACGCT
TGATCCTGAGCTCATGTTAAACCCAGAAAATACCAAGGGCCAGTACCCTGGCTATGACAAAAGAATAT
TCCTTCCTGCGCACCAGTGTCCCTCGGGGCCAAGGTGGCAGCCTGGGGCTCCGGCACATCCTAGGG
AGAAAAAACTTCAAATCAAGCAAAATCCGGTCTCTGGCCGATTACAGAAGTGAAGATCAAATGCGGG
GAATTCGGGGAAATGTCGCGCTCCCGATTCTACCAAGGGTCCCTGAAGCAGAACAGAAGCAGTGC
GCGTCCGTTGTGCTGAGATCAGCCTGTCCCCGACACTGACGACCGTCTGGAGAACACCTCCCTGGCTG
GAGACAGCGTGTCTGAGGTGGATGGAATGACAGCGACAGCTCATCGTACAGCAGCGCTCCACCCGAGG
GACCTATGGCATTCTGTGCAAGACAGTGGGCACGACAGCACCCTATATGGTCAACGGCCAGGAGATT
CCTGCGGATACCCTGGCCAGTTCCTCCATTAAGGACGTCTCCAGGCCGAGCCGCTGAGCACCAAG
ACCAGGGCAGGAGGTCAACGGGAGGTGCGGAGTCCGAGAGACAGCATCTGCAGCAGCGTGTCTTGG
GAGCTCTGCAGCAGAAACACAGGAGGAGATGCTGCAGGTGCTCAAAGAGAAAATGCGACTCGAAGGACAG
CTGGAAGCCTTGTCACTGGAGGCGAGTCAAGCACTTAAGAGAAGGCTGAGCTGCAGGCCAGCTGGCCG
CCCTCAGCACGAAGCTGCAGGCCAGGTGGAGTGCAGCCACAGCAGCCAGCAGCGCAGGATTGCTGAG
CTCGGAGGTGGACACCCTGAAGCAGTGTGCTGGGACCTGGAGCGAGCCATGACTGACCTGCAGAACATG
CTGAGGCAAAAAATGCCAGCCTGGCGTCCCAACACGACTTCGAGGTGGCCGAGGAGCAGTACCAGA



[View online »](#)

```

GGCTTATGGCCAAGGTAGAGGACATGCAGAGGAGCATGCTCAGCAAGGACAACACAGTGCACGACCTGCC
ACAGCAGATGACAGCCTTGCAGAGCCAGCTTACAGAGGTGCAGCTGGAGCGGACGACGCTGACCAGCAAG
CTGAAGGCGTCGAGGCGGAGATCTCGTCCCTGCAGAGTGTCCGGCAGTGGTACCAGCAGCAGCTCGCCC
TGGCACAGGAGGCCCGCTCAGGCTGCAGGGTGCAGTGGCCACATCCAGGTTGGACAGATGACCAGGC
AGGTCTCTGGAGCACCTGAAACTCGAGAATGTGTCCCTGTCCAGCAGCTGACGGAACTCAGCACAGG
TCCATGAAGGAGAAGGGGCGCATCGCGCACAGCTGCAGGGCATTGAGGCTGACATGTTGGATCAGGAAG
CAGCCTTCATGCAGATTCAGGAGGCAAGACGATGGTGGAGGAGGACCTTCAGAGGAGCTGGAAGAGTT
TGAAGGTGAGAGGGAGCGCTGCAGAGGATGGCGGACTCGGCGGCATCCCTGGAGCAGCAGCTGGAGCAG
GTGAAGTTGACTTTACTCCAGCGAGACCAGCAGCTTGAGGCTTTCAGCAGGAGCACCTGGACCTGATGA
AACAGCTCACCTTGAAGGAGGCTCTGCAGAGCAGGGAGCAGTCCCTCGATGCCCTGCAGACACACTA
CGATGAGCTGCAGGCCAGGCTGGGGGAGCTGCAGGGCAGGCGCCTCCAGGGAGGACACGATCTGCCTC
CTGCAGAACGAGAAGATCATCTTGAGGCGGCTTTCAGGGCGCAAGAGTGGCAAGGAGGAGCTTGACA
GAGGAGCAAGACGCTTGAAGAAGGTACCGAGGAAACCTCGGAACTTTAGAGAAGTTAAGAGAAGATT
AGCTATCAAATCCGCCAGGTGGAACACCTGCAGCAGGAGACTGCTGCTGAAAAAGCAAATGCAAAAA
ATAAAGGAACAGTTTCTCCAACAAAAGGTGATGGTGGAGGCTACCGGCGGACGCCACCTCAAAGACC
AGCTCATCAGTGAAGTGAAGCCACCAGGAAGAGGCTGGACTCGGAGCTGAAGGAGCTGCGGCAGGAGCT
GATGCAAGTGCACGGGAGAAGCGGACTGCCGAGGCGGAGCTCTCGCGCTGCACAGAGAGGTGGCCAG
GTCCGTGAGCAGATGGCGGACCTTGAAGGGCATCTCCAGTCCGCGCAGAAAGGAGCGAGACGAGATGGAAA
CACACTTGCAAGTTCGATTCGATAAGGAGCAGATGGTCCGGTCCACAGAGGCAATGAGGCGCTGAA
GAAACAAATCGAAGAGTTGCAGCAAGAGGCCCGGAAGGCCATCACGGAACAGAAGCAGAAGATGAGGCGG
CTGGGCTCAGACTTGACCAGCGCCAGAAAGGAGATGAAGACCAACATAAGGCCTACGAGAAGCCGCTGG
GCATCTCAGCCGCGCCTGCAGGAGGCCCTCGCGGCAAGGAGGCTCGGACCGGAGCTGGCCAGCT
CCGAGCCAGGTTGGCAGCAGTGCAGCAGCAGCTGGCTTACATGAAAGGATCCAGGCCCTGGAGCGGAG
CTGCAGGCTGTCAAGTATAGCAAGACGCTGCTGAAAAAGGAACTGCAGGAGGTCATAGCGCTGACCAGCC
AGGAGCTGGAGGAGTCCCGGGAAGGTGCTGGAGCTGGAGGACGAGGTGAGGCTGGCCATCTGCTGTG
GCGGCAGCGTGGGGCAGGTCACGTGAGCCCTGGACATGCCGCCACGCGTGAGACCCGAAGAACAAAACCT
CACCGTGTGCCAGCGTTGCTACTTTTGGTGTGCCACCTTC
    
```

```

AGCGGACCGACGCGTACGCGGCCGCTCGAGCAGAACTCATCTCAGAAGAGGATCTGGCAGCAAATGATATCC
TGGATTACAAGGATGACGACGATAAGGTTTAA
    
```

Protein Sequence:

>RC230657 representing NM_001172557
 Red=Cloning site Green=Tags(s)

```

MDGASAEQDGLQEDRSHSGPSSLPEAPLKPPGGLVPPDQQDKVQCAEVNRASTEGESPDGPGQGGGLCQNG
PTPPFPDPPSSLDPTTSPVGPDASPGVAGFHDNLRKSSQGTSAEGSVRKEALQSLRLSLPMQETQLCSTDS
PLPLEKEEQVRLQARKWLEEQKQYRVKRQQRSSQPATKTRLFSTLDPELMLNPNENLPRASTLAMTKEY
SFLRTSVPRGPKVGSGLPAHPREKKTSSKIRSLADYRTEDSNAGNSGGNVPAPDSTKGLKQNRSSA
ASVVSEISLSPDTDDRENTSLAGDSVSEVDGNDSDSSSYSSASTRGTYGILSKTVGTQDTPYMVNGQEI
PADTLGQFPSIKDVLQAAAAEHQDQGGQEVNGEVRSRDSICSSVSLESSAAETQEEMLVLEKMRLEGG
LEALSLEASQALKEKAELQAQLAALSTKLQAQVECSHSSQQRQDLSSEVDTLKQSCWDLERAMTDLQNM
LEAKNASLASSNNDLQVAEEQYQRLMAKVEDMQRSMMLSKDNTVHDLRQQMTALQSQLQQVQLERTTLTSK
LKASQAEISSLQSVRQWYQQQLALAQAARVRLQGEMAHIQVGMQTAGLLEHLKLENSLSQQLTETQHR
SMKEKGRIAAQLQGIEADMLDQEAAMQIQEAKTMVEEDLQRRLEEFEGEGERERLQRMADSAASLEQQLEQ
VKLTLLQRDQQLQEQEHLDMKQLTLTQEQALQSREQLDALQTHYDELQARLGELQGEAASREDTICL
LQNEKIIIEAALQAASGKEELDRGARRLEEGTEETSETLEKLEELAIKSGQVEHLQETAALKKQMQK
IKEQFLQKVMVEAYRRDATSKDQLISELKATRKRLDSELKELRQELMQVHGEKRTAEELSRLEHREVAQ
VRQHMAADLEGLHLSAQKERDEMEHLQSLQFDKEQMVAVTEANEALKKQIEELQQEARKAITEQKQKMR
LGSDLTSAQKEMKTKHKAYENAVGILSRRLQEAALAAKEADAELGQLRAQGGSSDSSLALHERIQALEAE
LQAVSHSKTLLEKELQEVIALTSQELEESREKVLLELEDEVPRGHLLWRQAGHVSPGHAATRETRRKL
HRVPSVATFGVATF
    
```

```

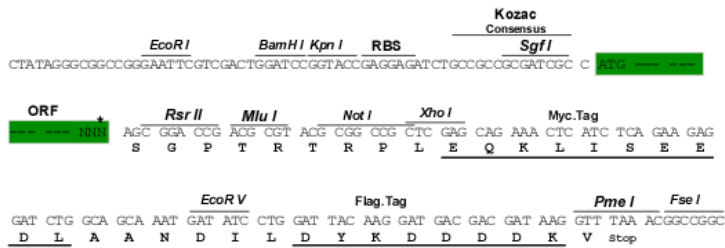
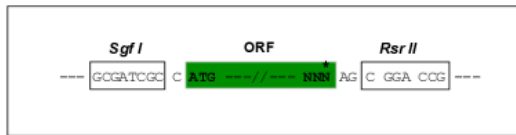
SGPTRRRLQKLI SEEDLAANDILDYKDDDDKV
    
```

Restriction Sites:

Sgfl-RsrII

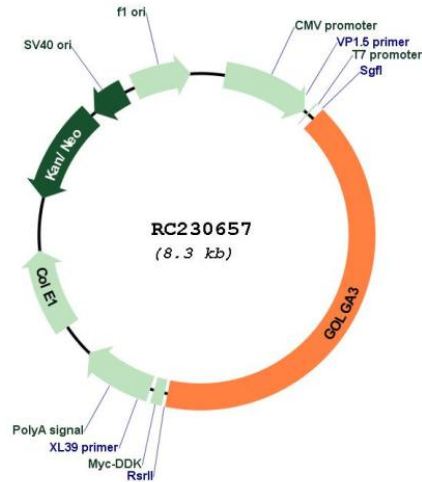
Cloning Scheme:

Cloning sites used for ORF Shuttling:



* The last codon before the Stop codon of the ORF

Plasmid Map:



ACCN: NM_001172557

ORF Size: 3402 bp

OTI Disclaimer: The molecular sequence of this clone aligns with the gene accession number as a point of reference only. However, individual transcript sequences of the same gene can differ through naturally occurring variations (e.g. polymorphisms), each with its own valid existence. This clone is substantially in agreement with the reference, but a complete review of all prevailing variants is recommended prior to use. [More info](#)

OTI Annotation: This clone was engineered to express the complete ORF with an expression tag. Expression varies depending on the nature of the gene.

Components: The ORF clone is ion-exchange column purified and shipped in a 2D barcoded Matrix tube containing 10ug of transfection-ready, dried plasmid DNA (reconstitute with 100 ul of water).

Reconstitution Method:

1. Centrifuge at 5,000xg for 5min.
2. Carefully open the tube and add 100ul of sterile water to dissolve the DNA.
3. Close the tube and incubate for 10 minutes at room temperature.
4. Briefly vortex the tube and then do a quick spin (less than 5000xg) to concentrate the liquid at the bottom.
5. Store the suspended plasmid at -20°C. The DNA is stable for at least one year from date of shipping when stored at -20°C.

RefSeq: [NM_001172557.2](#)

RefSeq ORF: 3405 bp

Locus ID: 2802

UniProt ID: [Q08378](#)

Cytogenetics: 12q24.33

MW: 126.6 kDa

Gene Summary:

The Golgi apparatus, which participates in glycosylation and transport of proteins and lipids in the secretory pathway, consists of a series of stacked cisternae (flattened membrane sacs). Interactions between the Golgi and microtubules are thought to be important for the reorganization of the Golgi after it fragments during mitosis. This gene encodes a member of the golgin family of proteins which are localized to the Golgi. Its encoded protein has been postulated to play a role in nuclear transport and Golgi apparatus localization. Several alternatively spliced transcript variants that encode different protein isoforms have been described for this gene. [provided by RefSeq, Feb 2010]