

Product datasheet for RC230640

MIB2 (NM_001170686) Human Tagged ORF Clone

Product data:

| | |
|---------------------------|--|
| Product Type: | Expression Plasmids |
| Product Name: | MIB2 (NM_001170686) Human Tagged ORF Clone |
| Tag: | Myc-DDK |
| Symbol: | MIB2 |
| Synonyms: | ZZANK1; ZZZ5 |
| Mammalian Cell Selection: | Neomycin |
| Vector: | pCMV6-Entry (PS100001) |
| E. coli Selection: | Kanamycin (25 ug/mL) |
| ORF Nucleotide Sequence: | >RC230640 representing NM_001170686 Red=Cloning site Blue=ORF Green=Tags(s) |

TTTTGTAATACGACTCACTATAGGGCGGCCGGGAATTCGTCGACTGGATCCGGTACCGAGGAGATCTGCCGCCGCGATCGCC

ATGGCGGGGGCGCTCCGGCGGGGGCGGGCCCTGGGCTCCCGCCCTTCGGGTCCCACAGTTTCCAGCCGCCGCTCTCCTCAGTGCCCGGTGGCCAGGAGGGCCTGGGAGCCCGAAGCCGTCCTCCGAGTCGCTCCTAGGTC ACTGGCGGATGCGGGCCGTCCTCTCGGCTGATGGGTTGGAAGCCAGCGAGGCTAGAGGCCAGTCCCAA AGTTTCCAGGCATCAGGGCTGCAGCCCAGGAGCCTCAAGGCGGCCGGCGGGGCGACTGGACGGCCGGACA GGTCCCGAGCAGCCGGCCACCATGGACCCTCTGCCACAGGTCCTGAGCAGCCCGCCCAACATGGA CCCAGACCCCGAGCGGGCGTGCAGGTGGGCATGCGGGTGGTGCAGCGGCTGGACTGGAAGTGGGGCCAG CAGGACGGCGGGAGGGCGGCGTGGGCACGGTGGTGGAGCTTGGCCGCCACGGCAGCCCTCGACACCCG ACCGCACAGTGGTTCGTGACAGTGGGACCAGGGCACGCGCACCAACTACCGCCCGGCTACCAGGGCGCGCA CGACCTGCTGCTGACGACAACGCCAGATCGGCGTCCGGCACCCCAACATCATCTGTGACTGCTGCAAG AAGCACGGGTGCGGGGGATGCGCTGGAAGTCCGTGTGTGCCTGGACTACGACCTTGCACGCAGTGT ACATGCACAACAAGCATGAGCTCGCCACGCCTTCGACCGCTACGAGACCGCTACTCGCGCCCTGTCAC ACTGAGTCCCCGCCAGGGCCTCCCGAGGATCCCACTAAGGGGCATCTTCCAGGGAGCGAAGTGGTGCGA GGCCCGGACTGGGAGTGGGCTCACAGGATGGAGGGGAAGGAAACCGGGCCGTGGTGGACATCCGTG GCTGGGATGTGGAGACAGGCCGGAGTGTGGCCAGCGTGACGTGGGCTGATGGTACCACCAATGTGTACCG TGTGGGCCACAAGGGCAAGGTGGACCTCAAGTGTGGGCGAGGACGGCGGGTCTACTACAAGGAC CACCTCCCAAGGCTCGGCAAGCCGGCGGAGCTGCAGCGCAGGGTGGTGGTGCAGCCAGCCCTCCAGC ACGGGGACAAGGTCAAGTGTCTGCTGGACACTGATGTCTGCGGGAGATGCAGGAAGGCCACGGCGGCTG GAACCCAGGATGGCGGAGACGGGCACCGTGCATCGTATCACGGACCGGGGACGTGCGCGTGCAGTTC AACACGAGACGCGCTGGACCTTCCACCCCGGGCGCTACCAAGCACCCTCTTGGTGGGCGACG TGGTCCGGGTGATCGGCGACCTGACACAGTGAAGCGGCTGCAGGCTGGGATGGCGAGTGGACGGACGA CATGGCCCTGCCCTGGGCGCGTGGGAAGGTGGTGAAGTGTGGAGACGGGAACCTGCGTGTAGCA



[View online >](#)

GTCGCTGGTCAGCGGTGGACCTTCAGCCCCTCCTGCCTGGTGGCCTACCGGCCGAGGAGGATGCCAACCC
 TGGACGTGGCCGAGCGCGCCCGGAGAAACAAAGCTCACTGAGCGTGGCCCTGGACAAGCTTCGGGCCCA
 GAAGAGTGACCCAGAGCACCCGGGAAGGCTGGTGGTGGAGGTGGCGCTGGGTAACGCAGCCCGGGCTCTG
 GACCTGCTGCGGAGGCGCCAGAGCAGGTGGACACCAAGAACCAAGCAGGACCGCTCTGCAAGTGGCTG
 CCTACCTGGGCCAGGTGGAGTTGATACGGCTGCTGCTACAAGCCAGGCGGGCGTGGACCTGCCGACGA
 CGAGGGCAACACGGCACTGCACTACGCGGCCCTGGGAACCAAGCCGAGCCAGGCTGCTCCTGAGT
 GCTGGGTGCCGGCGGACGCCATCAACAGCACCCAGAGCACAGCACTGCACGTGGCCGTGCAGAGGGGCT
 TCCTGGAGGTGGTGGCGCCCTGTGTGAGCGCGGCTGTGACGTCAACCTGCCCGACGCCACTCGGACAC
 GCCCTGCACTCCGCCATCTCGCGGGCACTGGAGCCAGCGCATTGTCGAGGTCTCACGGAGGTGCCA
 AACATCGATGTTACCGCCACCAACAGCCAGGTTTACCCTGCTGCACCATGCCTCCCTCAAGGGTCACG
 CGTAGCTGTGAGAAAGATTCTGGCTCGGGCGCGGAGCTGGTGGACGCCAAGAAGGAGGACGGCTTAC
 GCGCTGCATCTGGTGCCTCAACAACCACCGGAGGTGGCCAGATCCTCATCCGGGAGGGCCGCTGT
 GACGTGAACGTGCGCAACCGAAGCTGCAGTCCCCGCTGCATCTCGCGTGAACAGGCCACGTGGGGC
 TGGTGGCGCTACTGGTGGACGCTGGGTGCAGTGTCAACCGGAGGACGAGGAGGGGGACACAGCCCTGCA
 CGTGGCGTGCAGCGTCACTAGTGTGCCCTGGTGGTGTGATGGGGCCGGGGGGACCCAGGGCCCTTG
 CAGCTGTGTCCAGGCTACAGGCCCTCGGCCTCCCCGGCAGCGCGGAGCTGACCGTGGGCGCGCGGCTCG
 CCTGCTTCTGGCGCTGGAGGGCGCCGACGTGAGCTACACCAACCACCGGTCGGAGCCCGCTGGACCT
 GGCCGCCGAGGGTCGCGTGTCAAGGCCCTTACGGGCTGCGCCAGCGCTTCCGGGAGCGGACGGCGGGC
 GGGGGCGCGGCCCGGGCCAGGCAACGCTCGGGACCCCAACACCGTGCAGAACCTGCACGTGGGGC
 CCGCGCCGGGGCCGAGGCCGCTGAGTGCCTGGTGTGCTCCGAGCTGGCGCTGCTGGTGTCTTCTGCC
 GTGCCAGCACCGCACCGTGTGTGAGGAGTGCAGCGCAGGATGAAGAAGTGCATCAGGTGCCAGGTGGTC
 GTCAGCAAGAACTGCGCCAGACGGCTCTGAGGTGGCAGCGCCCGCCCGCCCGCCCGCCCGCGCC
 AGCTGGTGGAGGAGCTGCAGAGCCGCTACCGCCAGATGGAGGAACGCATCACTGCCCATCTGCATCGA
 CAGCCACATCCGCTCGTGTCCAGTGGCGCACGGCGCATGCGCCCTCGCGCTCCGCGCTCAGCGCC
 TGCCCCATCTGCCCGCAGCCATCCGCGACCGCATCCAGATCTTCGTG

ACGCGTACGCGGCGCTCGAGCAGAACTCATCTCAGAAGAGGATCTGGCAGCAAATGATATCCTGGATT
ACAAGGATGACGACGATAAGGTTTAA

Protein Sequence:

>RC230640 representing NM_001170686
Red=Cloning site Green=Tags(s)

MAGALRRGRALGSRPSGPTVSSRRSPQCPVAQEGLGARSRPRVAPRSLARCGPSSRLMGWKPSEARGQSQ
 SFQASGLQPRSLKAARRATGRPDRSRAARPTMDPSAHRRAAPPNMDPDPQAGVQVGMRVVRGVDWKWGQ
 QDGGEGGVGTVVELGRHGSPTDPRTVVVQWDQTRTNYRAGYQGAHDL LLYDNAQIGVRHPNII CDCK
 KHGLRGMRWKCRVCLDYDLCTQCYMHNKHEL AHAFDRYETAHSRPVTLSPRQGLPRIPLRGIFQGAKVVR
 GPDWEWGSQDGGEGKPGRVVDIRGWDVETGRSVASVTWADGTTNYYRVGHKGKVDLKCVEAAGGFYYKD
 HLPRLGKPAELQRRVSADSQPFQHGDKVKCLLDTDVLRMQEGHGGWNPMAETGTVHRI TDRGDVVRVQF
 NHETRWFHPGALTKHHSFWVGDVVRVIGDLDTVKRLQAGHGEWTD DMAPALGRVGKVVVF GDGNLRVA
 VAGQRWTFSPSCLVAYRPEEDANLDVAERARENKSSL SVALDKLRAQKSDPEHPGRLVVEVALGNAARAL
 DLLRRRPEQVDTKNQRTALQVAAYLGQVELIRLLLQARAGVDLPDEGNTALHYAALGNQPEATRVLLS
 AGCRADAINSTQSTALHVAVQRGFLEVVRALCERGC DVNLPDAHSDTPLHSAISAGTGASGIVEVL TEVP
 NIDVTA TNSQGF TLLH HASLKGHALAVRKILARARQLVDAKKEDGFTALHLAALNNHREVAQIL IREGRC
 DVNVRNRKLSPLHLAVQQAHVGLVPLLVDAGCSVNAEDEEGDTALHVALQRHQLLPLVADGAGGDPGPL
 QLLSRLQASGLPGSAELTVGAAVACFLALEGADVS YTNHRGRSPLDLAAEGRVLKALQGCAQRF RERQAG
 GGAAPGPRQTLGTPNTVNLHVGAAPGPEAAECLV CSELALLVLFSPCQHRTVCEE CARRMKKCI RCQVV
 VSKLRLPDGSEVASAAPAPGPPRQLVEELQSR YRQMEERITCPICIDSHIRLVFQCGHGACAPCGSALSA
 CPICRQPIRDRIQIFV

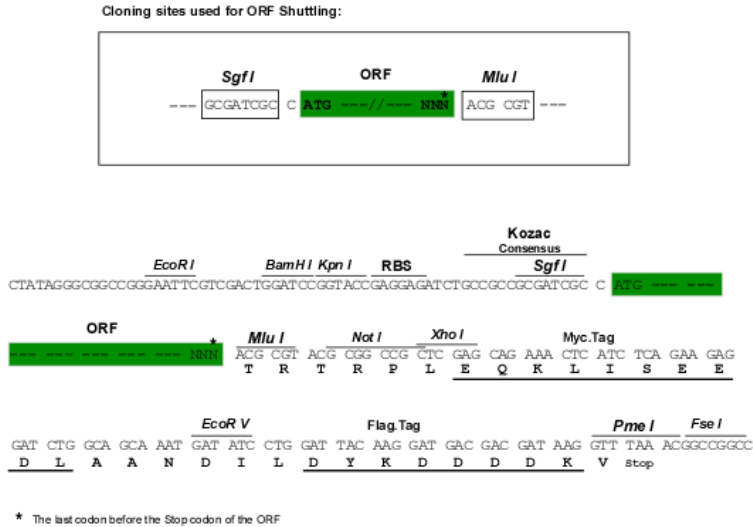
TRTRPLEQKLISEEDLAANDILDYKDDDDKV

Chromatograms:

https://cdn.origene.com/chromatograms/mk8036_e11.zip

Restriction Sites: SgfI-MluI

Cloning Scheme:



ACCN: NM_001170686

ORF Size: 3198 bp

OTI Disclaimer: The molecular sequence of this clone aligns with the gene accession number as a point of reference only. However, individual transcript sequences of the same gene can differ through naturally occurring variations (e.g. polymorphisms), each with its own valid existence. This clone is substantially in agreement with the reference, but a complete review of all prevailing variants is recommended prior to use. [More info](#)

OTI Annotation: This clone was engineered to express the complete ORF with an expression tag. Expression varies depending on the nature of the gene.

Components: The ORF clone is ion-exchange column purified and shipped in a 2D barcoded Matrix tube containing 10ug of transfection-ready, dried plasmid DNA (reconstitute with 100 ul of water).

Reconstitution Method:

1. Centrifuge at 5,000xg for 5min.
2. Carefully open the tube and add 100ul of sterile water to dissolve the DNA.
3. Close the tube and incubate for 10 minutes at room temperature.
4. Briefly vortex the tube and then do a quick spin (less than 5000xg) to concentrate the liquid at the bottom.
5. Store the suspended plasmid at -20°C. The DNA is stable for at least one year from date of shipping when stored at -20°C.

RefSeq: [NM_001170686.1](#), [NP_001164157.1](#)

RefSeq ORF: 2856 bp

Locus ID: 142678

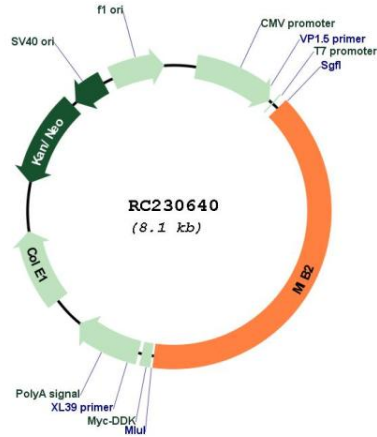
UniProt ID: [Q96AX9](#)

Cytogenetics: 1p36.33

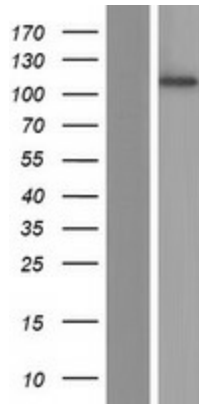
MW: 115.9 kDa

Gene Summary: The protein encoded by this gene is an E3 ubiquitin protein ligase that mediates ubiquitination of proteins in the Notch signaling pathway. The encoded protein may be a suppressor of melanoma invasion. [provided by RefSeq, Mar 2017]

Product images:



Circular map for RC230640



Western blot validation of overexpression lysate (Cat# [LY433639]) using anti-DDK antibody (Cat# [TA50011-100]). Left: Cell lysates from untransfected HEK293T cells; Right: Cell lysates from HEK293T cells transfected with RC230640 using transfection reagent MegaTran 2.0 (Cat# [TT210002]).