

Product datasheet for RC230622

SEZ6L (NM_001184773) Human Tagged ORF Clone

Product data:

Product Type: Expression Plasmids
 Product Name: SEZ6L (NM_001184773) Human Tagged ORF Clone
 Tag: Myc-DDK
 Symbol: SEZ6L
 Mammalian Cell Selection: Neomycin
 Vector: pCMV6-Entry (PS100001)
 E. coli Selection: Kanamycin (25 ug/mL)
 ORF Nucleotide Sequence: >RC230622 representing NM_001184773
 Red=Cloning site Blue=ORF Green=Tags(s)

TTTTGTAATACGACTCACTATAGGGCGGCCGGGAATTCGTCGACTGGATCCGGTACCGAGGAGATCTGCC
 GCC**CGATCGCC**

ATGCCCGCGCCCGGCCCGCCCGCGGGACTCCGCGGGATCTCGCTGTTCTCGCTGCTCTGGGGA
 GCCCGGCGCAGCGCTGGAGCGAGATGCTCTCCCGAGGGAGATGCTAGCCCTTTGGGTCCTTACCTCCT
 GCCCTCAGGAGCCCCGGAGAGAGGAGCAGTCTGGCAAAGAGCACCTGAAGAGAGAGTGGTAACAGCGCCC
 CCCAGTTCTCACAGTCGGCGGAAGTCTGGGCGAGCTGGTCTGGATGGGACCGCACCTTGCACATC
 ACGACATCCCAGCCCTGTACCCGCTGCTTCCAGAGGAGGCCCGCCCCAAGCACGCCTTCCCCCAAGAA
 GAAACTGCCTTCGCTCAAGCAGGTGAACTCTGCCAGGAAGCAGCTGAGGCCCAAGGCCACCTCCGACGCC
 ACTGTCCAAAGGGCAGGGTCCCAGCCAGCGTCCCAGGGCCTAGATCTCCTCTCCTCCACGGAGAAGC
 CTGGCCACCGGGGACCCGGACCCATCGTGGCCTCCGAGGAGGCATCAGAAGTCCCCCTTTGGCTGGA
 CCGAAAGGAGAGTGCGGTCCCTACAACACCCGCACCCCTGCAAATCTCCCCCTTCACTTCGCAGCCCTAT
 GTGGCCACACACTCCCCAGAGGCCAGAACCCGGGAGCCTGGGCTGACATGGCCAGGAGGCCCCCC
 AGGAGGACACCAGCCCCATGGCCCTGATGGACAAAGGTGAGAATGAGCTGACTGGGTGAGCCTCAGAGGA
 GAGCCAGGAGACCACTACCTCCACCATTATCACCACCAGGTATCACCACCGAGCAGGCACCAGCTCTC
 TGCAGTGTGAGCTTCTCAATCCTGAGGGGTACATTGACTCCAGCGACTACCCACTGCTGCCCTCAACA
 ACTTTCTGGAGTGACATACAACGTGACAGTCTCACTGGCTATGGGGTGGAGCTCCAGGTGAAGAGTGT
 GAACCTGTCCGATGGGGAAGTCTCCATCCGCGGGGTGGACGGCCCTACCCTGACCGTCTGGCCAAC
 CAGACACTCCTGGTGGAGGGGCAGGTAATCCGAAGCCCCACCAACACCATCTCCGTCTACTTCCGGACCT
 TCCAGGACGACGGCCTTTGGGACCTTCCAGCTTCACTACCAGGCCTTATGCTGAGCTGCAACTTTCCCCG
 CCGCCTGACTCTGGGGATGTCACGGTATGGACTGCACTCAGGTGGGGTGGCCCACTTCACTGCCAC
 CTGGGCTATGAGCTCCAGGGCGTAAGATTCTGACATGCATCAATGCCTCCAAGCCGCACTGGAGCAGCC
 AGGAGCCCATCTGCTCAGCTCCTTGTGGAGGGCAGTGCAATGCCACCATCGGCCGCTCCTCTCCCC
 AAGTTACCCTGAAAACACCAATGGGAGCCAATTCTGCATCTGGACGATTGAAGCTCCAGAGGGCCAGAAG
 CTGCACCTGCACCTTTGAGAGGCTGTTGCTGCATGACAAGGACAGGATGACGGTTACAGCGGGCAGACCA
 ACAAGTCAGCTCTTCTACGACTCCCTCAAACCGAGAGTGTCCCTTTTGGGGCTGCTGAGCGAAGG



[View online »](#)

CAACACCATCCGCATCGAGTTCACGTCCGACCAGGCCCGGGCGGCTCCACCTTCAACATCCGATTTGAA
 GCGTTTGAGAAAGGCCACTGCTATGAGCCCTACATCCAGAATGGGAATTCACATACCCGACCCGACCT
 ATAAATTGGGACTATAGTGGAGTTCACCTGCGACCCCGGCCACTCCCTGGAGCAGGGCCCGGCCATCAT
 CGAATGCATCAATGTGCGGGACCCATACTGGAATGACACAGAGCCCTGTGCAGAGCCATGTGTGGTGGG
 GAGCTCTCTGCTGGCTGGGTGGTATTGTCCCAAACCTGGCCCGAGCCCTACGTGGAAGGTGAAGATT
 GTATCTGGAAGATCCACGTGGGAGAAGAGAAACGGATCTTCTTAGATATCCAGTTCCTGAATCTGAGCAA
 CAGTGACATCTTGACCATCTACGATGGCGACGAGGTGATGCCCCACATCTTGGGGCAGTACCTTGGGAAC
 AGTGGCCCCAGAAACTGTACTCTCCAGCCAGACTTAACCATCCAGTTCATTTCGGACCCTGCTGGCC
 TCATCTTTGAAAAGGGCCAGGGATTTATCATGAACTACATAGAGGTATCAAGGAATGACTCCTGCTCGGA
 TTTACCCGAGATCCAGAATGGCTGGAAAACCACTTCTCACACGGAGTTGGTGCGGGGAGCCAGAATCACC
 TACCAGTGTGACCCCGCTATGACATCGTGGGAGTGACACCCTCACCTGCCAGTGGGACCTCAGCTGGA
 GCAGCGACCCCATTTTGTGAGAAAATTGTACTGCACCGACCCCGGAGAGGTGGATCACTCGACCCG
 CTTAATTTGGATCCTGTGCTGCTGGTGGGACCACCATCCAATACACCTGCAACCCCGTTTTGTGCTT
 GAAGGGAGTTCTTCTGACCTGCTACAGCCGTGAAACAGGGACTCCCATCTGGAGCTCTCGCTGCCCC
 ACTGCGTTTCGGAGGAGTCCCTGGCATGTGACAACCCAGGGCTGCCTGAAAATGGATACCAAATCCTGTA
 CAAGCGACTTACTCTGCCAGGAGTCCCTCACCTTCATGTGCTACGAAGCTTTGAGCTCATGGGTGAA
 GTGACCATCCGCTGCATCCTGGGACAGCCATCCCCTGGAACGGGCCCTGCCCTGTGTAAAGTTAATC
 AAGACAGTTTTGAACATGCTTTAGAAGTAGCAGAAGCGGCAGCAGAGACGTGCTGGAAGGGGGAAACAT
 GGCCCTGGCTATCTTCATCCCGTCTCATCTCCTTACTGCTGGGAGGAGCCTACATTTACATCACA
 AGATGTCGCTACTATTCCAACCTCCGCCTGCCTCTGATGTACTCCACCCTACAGCCAGATCACCGTGG
 AAACCGAGTTTGACAACCCATTTACGAGACAGGGGAAACCAGAGAGTATGAGGTTTCTATC

ACGCGTACGCGGCCGCTCGAGCAGAACTCATCTCAGAAGAGGATCTGGCAGCAAATGATATCCTGGATT
 ACAAGGATGACGACGATAAGGTTTAA

Protein Sequence:

>RC230622 representing NM_001184773
 Red=Cloning site Green=Tags(s)

MPAARPPAAGLRGISLFLALLLGSPPAAALERDALPEGDASPLGPYLLPSGAPERGSPGKEHPEERVVTP
 PSSSQSAEVLGELVLDGTAPSAHHDIPALSPLLPEEARPKHALPPKKLPSLKQVNSARKQLRPKATSAA
 TVQRAGSQPASQGLDLLSSSTEKPGPPGDPDPIVASEEASEVPLWDRKESAVPTTAPLQISPFSTQPY
 VAHTLPQRPEPGEPPDMAQEAPQEDTSPMALMDKGENELTGSASEESQETTTSTIITTTVITTEQAPAL
 CSVSFSNPEGYIDSSDYPLLPLNPFLECTYNVTVYTGYGVELQVKSVDLSDGELLIRGVDGPTLTVLAN
 QTLLVEGQVIRSPNTISVYFRFTQDDGLGTFQLHYQAFMLSCNFRPRPDSGDVTMDLHSGGVAHFHCH
 LGYELQGAKILTCINASKPHWSSQEPICSAPCGGAVHNATIGRVLSPSPENTNGSQFCIWTIEAPEGQK
 LHLHFERLLLHDKDRMTVHSGQTNKSALLYDSLQTESVFPFEGLLSEGNTIRIEFTSDQARAASFNIRFE
 AFEKGHCYEPYIQNGNFTSDPTYNIGTIVEFTCDPGHSLEQGPATIECINVRDPYWNDEPLCRAMCGG
 EL SAVAGVVLSPNWPEPYVEGEDCIWKIHWGEEKRIFLDIQFLNLSNSDILTIYDGEVMPHILGQYLGN
 SGPQKLYSSTPDLTIQFHSDPAGLIFGKGQGFIMNYIEVSRNDSCDLPEIQNGWKTTSHTELVRGARIT
 YQCDPGYDIVGSDTLTCQWDLWSWSDPPFCEKIMYCTDPGEVDHSTRLLISDPVLLVGTTIYQTCNPGFVL
 EGSSLLTCYSRETGTPIWTSRLPHCVSEESLACDNPLPENGYQILYKRLYLPGESLTFMCEYEGFELMGE
 VTIRCILGQPSHWNGPLPVCKVNQDSFEHALLEVAEAAAETSLEGGNMALAIPIPVLIIISLLLGGAYIYIT
 RCRYNSNLRPLMYSHPYQITVETFDNPIYETGETREYEVSI

TRTRPLEQKLISEEDLAANDILDYKDDDDKV

Chromatograms:

https://cdn.origene.com/chromatograms/mg4090_c05.zip

Restriction Sites:

Sgfl-MluI

Cloning Scheme:


ACCN: NM_001184773

ORF Size: 3072 bp

OTI Disclaimer: The molecular sequence of this clone aligns with the gene accession number as a point of reference only. However, individual transcript sequences of the same gene can differ through naturally occurring variations (e.g. polymorphisms), each with its own valid existence. This clone is substantially in agreement with the reference, but a complete review of all prevailing variants is recommended prior to use. [More info](#)

OTI Annotation: This clone was engineered to express the complete ORF with an expression tag. Expression varies depending on the nature of the gene.

Components: The ORF clone is ion-exchange column purified and shipped in a 2D barcoded Matrix tube containing 10ug of transfection-ready, dried plasmid DNA (reconstitute with 100 ul of water).

Reconstitution Method:

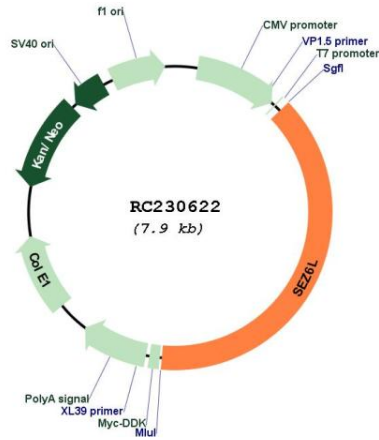
1. Centrifuge at 5,000xg for 5min.
2. Carefully open the tube and add 100ul of sterile water to dissolve the DNA.
3. Close the tube and incubate for 10 minutes at room temperature.
4. Briefly vortex the tube and then do a quick spin (less than 5000xg) to concentrate the liquid at the bottom.
5. Store the suspended plasmid at -20°C. The DNA is stable for at least one year from date of shipping when stored at -20°C.

RefSeq: [NM_001184773.1](#), [NP_001171702.1](#)

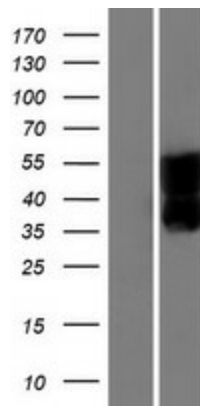
RefSeq ORF: 3072 bp

Locus ID: 23544

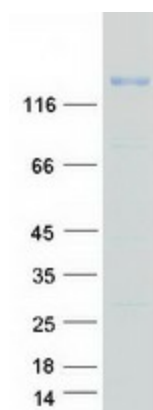
UniProt ID: [Q9BYH1](#)
Cytogenetics: 22q12.1
Protein Families: Druggable Genome, Transmembrane
MW: 112.1 kDa
Gene Summary: May contribute to specialized endoplasmic reticulum functions in neurons.[UniProtKB/Swiss-Prot Function]

Product images:


Circular map for RC230622



Western blot validation of overexpression lysate (Cat# [LY433621]) using anti-DDK antibody (Cat# [TA50011-100]). Left: Cell lysates from untransfected HEK293T cells; Right: Cell lysates from HEK293T cells transfected with RC230622 using transfection reagent MegaTran 2.0 (Cat# [TT210002]).



Coomassie blue staining of purified SEZ6L protein (Cat# [TP330622]). The protein was produced from HEK293T cells transfected with SEZ6L cDNA clone (Cat# RC230622) using MegaTran 2.0 (Cat# [TT210002]).