

Product datasheet for RC230611

GPR64 (ADGRG2) (NM_001184833) Human Tagged ORF Clone

Product data:

Product Type:	Expression Plasmids
Product Name:	GPR64 (ADGRG2) (NM_001184833) Human Tagged ORF Clone
Tag:	Myc-DDK
Symbol:	GPR64
Synonyms:	CBAVDX; EDDM6; GPR64; HE6; TM7LN2
Mammalian Cell Selection:	Neomycin
Vector:	pCMV6-Entry (PS100001)
E. coli Selection:	Kanamycin (25 ug/mL)
ORF Nucleotide Sequence:	>RC230611 representing NM_001184833 Red=Cloning site Blue=ORF Green=Tags(s)

TTTTGTAATACGACTCACTATAGGGCGCCGGGAATTCGTCGACTGGATCCGGTACCGAGGAGATCTGCCGCCGCGATCGCC

ATGGTTTTCTCTGTCAGGCAGTGTGGCCATGTTGGCAGAAGTGAAGAAGTTTTACTGACGTTCAAGATAT
TCCTTGTGCATCATTTGTCTTCATGTCGTTCTGGTAACATCCCTGGAAGAAGATACTGATAATTCAGTTT
GTCACCACCACCTGAGGTTGAAACAACAAGCCTCAATGATGTTACTTTAAGCTTACTCCCTTCAAACGAA
ACAGAAAAAACTAAAATCACTATAGTAAAAACCTTCAATGCATCAGGCGTCAAACCCAGAGAAATATCT
GCAATTTGTCATCTATTTGCAATGACTCAGCATTTTTTAGAGGTGAGATCATGTTTCAATATGATAAAGA
AAGCACTGTTCCCAGAATCAACATATAACGAATGGCACCTTAACTGGAGTCTGTCTCTAAGTGAATTA
AAACGCTCAGAGCTCAACAAAACCTGCAAACCTAAGTGAGACTTACTTTATAATGTGTGCTACAGCAG
AGGCCCAAAGCACATTAATTTGTACATTCACAATAAACTGAATAATAACAATGAATGCATGTGCTGTAAT
AGCTGCTTTGGAAAGAGTAAAGATTCGACCAATGGAACACTGCTGCTGTTCTGTGTCAGGATACCCTGCCCT
TCCTCCCAGAAGAGTTGGAAAAGCTTCAGTGTGACCTGCAGGATCCCATTGTCTGTCTTGCTGACCATC
CACGTGGCCACCATTTCTCCAGCCAATCCATCCCAGTGGTGCCTCGGGCCACTGTGCTTTCCAGGT
CCCCAAAGCTACCTCTTTGCTGAGCCTCCAGATTATTCACCTGTGACCCACAATGTTCCCTCTCCAATA
GGGGAGATTCAACCCCTTCCAGCCTCAGCTCCCATAGCTCCAGCCCTGCCATTGACATGCCCC
CACAGTCTGAAACGATCTCTCCCTATGCCCAAACCCATGTCTCCGGCACCCACCTCCTGTGAAAGC
CTCATTTTCTCTCCACCGTGTCTGCCCTGCGAATGTCAAACTACCAGCGCACCTCCTGTCCAGACA
GACATCGTCAACACCAGCAGTATTTCTGATCTTGAGAACCAAGTGTGTCAGATGGAGAAGGCTCTGTCT
TGGGCAGCCTGGAGCCTAACCTCGCAGGAGAAATGATCAACCAAGTCAGCAGACTCCTTCAATCCCCGCC
TGACATGCTGGCCCTCTGGCTCAAAGATTGCTGAAAGTAGTGGATGACATTGGCCTACAGCTGAACTTT
TCAAACACGACTATAAGTCTAACCTCCCCTTCTTTGGCTCTGGCTGTGATCAGAGTGAATGCCAGTAGTT
TCAACACAACCTTTGTGGCCAAGACCCTGCAAATCTCAGGTTTCTCTGAAACCCAAAGCTCCTGA
GAACAGTATTGGCACAATTACTTCTTCATCGCTGATGAATAATTTACCAGCTCATGACATGGAGCTA



[View online »](#)

GCTTCCAGGGTTCAGTTCAATTTTTTGAACACCTGCTTTGTTTCAGGATCCTCCCTGGAGAACCTCT
 CTCTGATCAGCTACGTATATCATCGAGTGTGCAAACTGACCGTCAGGAACCTGACAAGAACTGAC
 AGTCACATTAAGCACATCAACCCGAGCCAGGATGAGTTAACAGTGAGATGTGTATTTGGGACTTGGG
 AGAAATGGTGGCAGAGGAGGCTGGTCAGACAATGGCTGCTCTGTCAAAGACAGGAGATTGAATGAAACCA
 TCTGTACCTGTAGCCATCAACAAGCTTCGGCGTTCTGCTGGACCTATCTAGGACATCTGTGCTGCCTGC
 TCAAATGATGGCTCTGACGTTTATTACATATATGGTTGTGGGCTTTCATCAATTTTTCTGTCAGTGTG
 CTTGTAACCTACATAGCTTTTGAAGATCCGGAGGGATTACCCTTCCAAAATCCTCATCCAGCTGTGTG
 CTGCTCTGCTTCTGCTGAACCTGGTCTTCTCCTGGACTCGTGGATTGCTCTGTATAAGATGCAAGGCT
 CTGCATCTCAGTGGCTGTATTTCTTATTATTTCTCTTGGTCTCATTACATGGATGGGCTAGAAAGCA
 TTCCATATGTACCTGGCCCTTGTCAAAGTATTTAATACTTACATCCGAAAATACATCCTTAAATTCTGCA
 TTGTGGTGGGGGTACCAGCTGTGGTGTGACCATCATCTGACTATATCCCCAGATAACTATGGGCT
 TGGATCTATGGAAATCCCAATGGTTCACCGGATGACTTCTGCTGGATCAACAACAATGCAGTATTC
 TACATTACGGTGGTGGGATTTTCTGTGTGATTTTTTGTGACGTGAGCATGTTTATTGTGGTCTGG
 TTCAGCTCTGTGAATTAAGAAAGAAAGCAACTGGGAGCCAGCGAAAAACAGTATTCAGACCTCAG
 GAGTATCGCTGGCCTTACATTTTACTGGGAATAACTTGGGCTTGCCTCTTTGCCTGGGACCAGTT
 AACGTGACCTTATGTATCTGTTTGCATCTTAAATACCTTACAAGGATTTTTCATATTCATCTTTACT
 GTGTGGCCAAAGAAAATGTCAGGAAGCAATGGAGGCGGTATCTTTGTTGTGGAAAGTTACGGCTGGCTGA
 AAATTCTGACTGGAGTAAACTGCTACTAATGGTTTAAAGAAGCAGACTGTAAACCAAGGAGTGTCCAGC
 TCTTCAAATTCCTTACAGTCAAGCAGTAACTCCACTAACTCCACCACACTGCTAGTGAATAATGATTGCT
 CAGTACACGCAAGCGGAATGGAATGCTTCTACAGAGAGGAATGGGCTCTTTTAGTGTTCAGAAATGG
 AGATGTGTGCCTTACGATTTCACTGGAACAGCACATGTTTAAACGAGAAGGAAGATTCCTGCAATGGG
 AAAGCCGATGGCTCTCAGAAGGACTTCAAAGCGGGAAGCTTACACTTTATTGAGCAAATG

ACGCGTACGCGCGCTCGAGCAGAACTCATCTCAGAAGAGGATCTGGCAGCAAATGATATCCTGGATT
 ACAAGGATGACGACGATAAGGTTTAA

Protein Sequence:

>RC230611 representing NM_001184833
 Red=Cloning site Green=Tags(s)

MVFSVRQCGHVGRTEEVLLTFKIFLVIICLHVVLVTSLEEDTDNSLSPPEVETTSLNDVTL SLLPSNE
 TEKTKITIVKTFNASGVKQPRNICNLSSICNDSAFFRGEIMFYDKESTVPQNQHITNGTLTGVL SLSSEL
 KRSELNKLQTLSETYFIMCATAEAQSTLNCTFTIKLNNMTNACAVIAALERVKIRPMEHCCCSVRIPCP
 SSPEELEKLQCDLQDPIVCLADHPRGPPFSSSQSIPVVPRATVLSQVPKATSFAEPPDYSPTVHNVPSP
 GEIQPLSPQPSAPIASSPAIDMPPQSETISSPMPQTHVSGTPPPVKASFSSPTVSAPANVNTTSAPPVQT
 DIVNTSSISDLENQVLQMEKALSLSLEPNLAGEMINQVSRLHSPDMLAPLAQRLLKVVDIGLQLNF
 SNTTISLTSPSLALAVIRVNASSFNNTTFVAQDPANLQVSLETQAPENSIGTITLPSLMNLP AHDMEL
 ASRVQFNFFETPALFQDPSLENLSLISYVIVSSVANLTVRNLTRNVTVTLKHINPSQDELTVRCVFDL
 RGGGSDNGCSVKDRRLNETICTSHLTSFGVLLDL SRTSVLPAQMMALTFITYIGCGLSSIFLSVT
 LVTYIAFEKIRRDPYKILIQLCAALLLNLFLLDSWIALYKMQGLCISVAVFLHYFLLVSFTWMGLEA
 FHMYLALVKVFNTYIRKYILKFCIVGWGPAVVVTIIL TISPNDYGLGSYGKFPNGSPDDFCWINNNAVF
 YITVVGYFCVIFLLNVSMFIVVLVQLCRIKKKKQLGAQRKTSIQDLRSIAGLTFLLGITWGF AFWGPV
 NVTFMYLFAIFNTLQGGFFIFIFCVAKENVRKQWRRYLCCGKLR LAENSDWSKATNGLKKQTVNQGVSS
 SSNSLQSSNSTNTLLVNNDCSVHASGNGNASTERNGVSFSVQNGDVCLHDFTGKQHMFEKEDSCNG
 KGRMALRRTSKRGLHFIEQM

TRTRPLEQKLI SEEDLAANDILDYKDDDDKV

Chromatograms:

https://cdn.origene.com/chromatograms/mk8007_e07.zip

Restriction Sites:

Sgfl-MluI

Cloning Scheme:


ACCN: NM_001184833

ORF Size: 3003 bp

OTI Disclaimer: The molecular sequence of this clone aligns with the gene accession number as a point of reference only. However, individual transcript sequences of the same gene can differ through naturally occurring variations (e.g. polymorphisms), each with its own valid existence. This clone is substantially in agreement with the reference, but a complete review of all prevailing variants is recommended prior to use. [More info](#)

OTI Annotation: This clone was engineered to express the complete ORF with an expression tag. Expression varies depending on the nature of the gene.

Components: The ORF clone is ion-exchange column purified and shipped in a 2D barcoded Matrix tube containing 10ug of transfection-ready, dried plasmid DNA (reconstitute with 100 ul of water).

- Reconstitution Method:**
1. Centrifuge at 5,000xg for 5min.
 2. Carefully open the tube and add 100ul of sterile water to dissolve the DNA.
 3. Close the tube and incubate for 10 minutes at room temperature.
 4. Briefly vortex the tube and then do a quick spin (less than 5000xg) to concentrate the liquid at the bottom.
 5. Store the suspended plasmid at -20°C. The DNA is stable for at least one year from date of shipping when stored at -20°C.

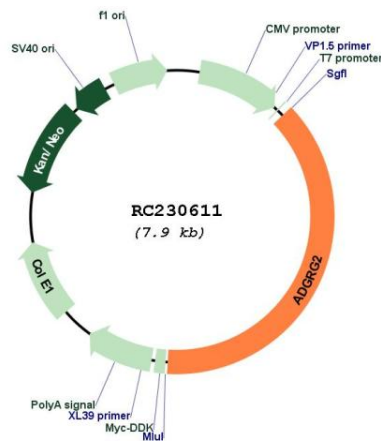
RefSeq: [NM_001184833.1](#), [NP_001171762.1](#)

RefSeq ORF: 3006 bp

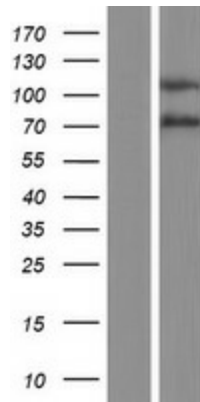
Locus ID: 10149

UniProt ID: [Q8IZP9](#)
Cytogenetics: Xp22.13
Protein Families: Druggable Genome, GPCR, Transmembrane
MW: 110.5 kDa
Gene Summary: This gene encodes a member of the G protein-coupled receptor family described as an epididymis-specific transmembrane protein. The encoded protein may be proteolytically processed as it contains a motif shown to be a protein scission motif in some members of this family (PMID: 11973329). Multiple transcript variants encoding different isoforms have been found for this gene. [provided by RefSeq, Aug 2011]

Product images:



Circular map for RC230611



Western blot validation of overexpression lysate (Cat# [LY433610]) using anti-DDK antibody (Cat# [TA50011-100]). Left: Cell lysates from untransfected HEK293T cells; Right: Cell lysates from HEK293T cells transfected with RC230611 using transfection reagent MegaTran 2.0 (Cat# [TT210002]).