

Product datasheet for **RC230602**

RAB3GAP1 (NM_001172435) Human Tagged ORF Clone

Product data:

Product Type: Expression Plasmids
Product Name: RAB3GAP1 (NM_001172435) Human Tagged ORF Clone
Tag: Myc-DDK
Symbol: RAB3GAP1
Synonyms: P130; RAB3GAP; RAB3GAP130; WARBM1
Mammalian Cell Selection: Neomycin
Vector: pCMV6-Entry (PS100001)
E. coli Selection: Kanamycin (25 ug/mL)
ORF Nucleotide Sequence: >RC230602 representing NM_001172435
Red=Cloning site Blue=ORF Green=Tags(s)

TTTTGTAATACGACTCACTATAGGGCGGCCGGAATTCGTCGACTGGATCCGGTACCGAGGAGATCTGCC
GCC**CGATCGCC**

ATGGCTGCCGACAGTGAGCCGAATCCGAGGATTTGAGATCACGGACTTCACCACTGCCTCGGAATGGG
AAAGGTTTATTTCCAAAGTTGAAGAAGTCTTGAATGACTGGAACTGATTGGAACTCTTTGGGAAAGCC
ACTCGAAAAGGTATATTTACTTCTGGCACATGGGAAGAGAAATCAGATGAAATTCCTTTGCTGACTTC
AAGTTCTCAGTCACTCATCATTATCTGTACAAGAGTCCACTGATAAAGAAGGAAAGGATGAGTTATTAG
AGGATGTTGTTCCACAATCTATGCAAGATTTGCTGGGTATGAATAATGACTTTCCTCAAGAGCACATTG
CCTGGTAAGATGGTATGGGCTACGTGAGTTCGTGGTATTGCCCTGCTGCACACAGTGACGCTGTTCTC
AGCGAATCTAAGTGAACCTTCTCTGAGTTCGTTTCTATTGCCTGGGAAACTGGCTGTCAGGTGC
CACTCTTTGTGCAAAATCACCACAAATGGCGAAGAATGTATGTAGGAGAAATGTAAGGTCCTGGTGTACG
AACTGATTTGCAAAATGGTTCATCTTAGAAAAGTGCCAAATCAGTACACTCACTTATCAGGTCTGCTGGAT
ATCTTCAAATCAAAGATTGGATGTCCTTAACTCCATTGCCTCCAGTTAGTATTGCTATTCGATTTACCT
ATGACTTCAAGATTGGCAGCAGTATTTTGGCCTCAGCAACCTCAGACATAGATGCCCTGTAGGAGG
AGAAGTTGGAGGCTTGGAGTTTGGCAAGTACCATTGGTGCCTGCGAAGATCCTATTAGTGAATCCAT
TTAGTACTACATGGCCTCATCTGACCGAAGGGATCATTGTGGATAATGATGTTTATTCTGATTTGGATC
CTATTCAGCTCCACATTGGTCTGTTAGAGTTCGAAAAGCTGAGAATCCTCAGTGTGCTAGGTGATTT
TGTCACAGAAATTTTAAATTTGCCGTCGAAAGGAGTCAACTGATGAGATTCTTGGACGATCTGCATTT
GAGGAAGAAGGCAAGAAACTGCTGATATAACTCATGCTTTGTCAAAATGACAGAGCCGGCATCAGTTC
CAATTCATAAATATCAGTTTCAAATATGGTACACACTGCAAAGAAGAAAATCCGAAAACACAGAGGTGT
AGAGGAGTCACCGCTAAATAATGATGTTCTTAATACTATTCTCCTGTTCTTATTCCTGATGCTGTTTCT
GAGAAACCATTAGATGGAACACTTCAACAGATAATAATAATCCTCCATCAGAGAGTGAAGACTATAATC
TCTACAATCAGTCAAGTCTGCACCATCTGACAGTTTAAACATACAAACCTGGCTTTGTGCTCTGTATGAT
CAATTTTACCATGGAGGTTGAAAGGAGTGGCACACCTCTGGCAGGAATTTGTTCTTGAATGCGTTTC



[View online »](#)

CGATGGGAAAACAACTTTCTGATTCCAGGATTAGCAAGTGGACCCAGATCTGAGGTGTTGTTACTGC
 ATCAGAACTACAGATGTTAAATGTTGTATTGAAAGAAAGAAGGCACGTGATGAGGGGAAAAAGACAAG
 TGCTTCAGATGTCACTAATATATATCCAGGGGATGCTGGAAAAGCAGGAGACCAGTTGGTCCAGATAAT
 CTAAGAAGAACAGATAAGGAAAAGGGAGAGGTAGGAAAATCTTGGGATTCCTGGAGTGACAGCGAAGAAG
 AATTTTTTGAATGCCTAAGTGATACTGAAGAACTTAAAGGAAATGGACAAGAGAGTGGAAGAAAGGAGG
 ACCTAAGGAGATGGCAAATTTAAGGCCGGAAGGACGGCTCTATCAGCATGGGAAACTTACTGCTGCAT
 AATGGGAACCTCTACATTCCAGTAACCCAGGAACCAGCACCTATGACAGAAGATCTGCTAGAAGAGC
 AGTCTGAAGTTTTAGCTAAATTAGGTACATCGGCAGAGGGGGCTCACCTTCGAGCACGCATGCAGAGTGC
 CTGTCTGCTCTCAGATATGGAGTCTTTAAGGCAGCTAATCCAGTTGCTCCCTGGAAGATTTTGTGAGG
 TGGTATTCACCCCGGATTATATTGAAGAGGAGGTGATTGATGAAAAGGCAATGTGGTCTGAAAGGAG
 AACTGAGTGCCCGGATGAAGATTCAGCAATATGTGGGTAGAAGCCTGGGAAACAGCTAAGCCAATTCC
 TGCTAGAAGGCAAAGGAGACTCTTTGATGATACACGGGAAGCAGAAAAGGTGCTGCACTATCTGGCAATC
 CAGAAACCTGCAGACCTTGCTCGGCACCTGTTACCTTGTGTGATTCATGCAGCTGTACTCAAGTAAAGG
 AAGAAGAAAGTCTCGAAAACATTTCTTCAGTTAAGAAGATCATAAAGCAGATAATATCCCATTCCAGTAA
 AGTTTTGCACTTCCCAATCCAGAAGACAAGAAATTTGGAAGAAATCATTACCAGATTACTAATGTGGAA
 GCTCTCATTGCCAGAGCTCGGTCACTAAAAGCCAAGTTTGGAACTGAGAAATGTGAACAGGAGGAGGAAA
 AGGAAGATCTTGAAGGTTTGTGAGTTGCTGCTGGAGCAGCCTGAAGTGTAGTCACCGGTGCAGGAAG
 AGGACATGCTGGCAGGATCATTACAAGCTGTTTGTGAATGCCCAGAGGCTGACTGAATCTTCTGATGAG
 GCTGCAGCTATGACTCCACCAGAGGAGGAATTGAAGAGAATGGGCTCCCCAGAGGAAAGAAGGCAGAACT
 CCGTGTGAGACTTCCACCCCTGCTGGCCGGGAATTCATTTGCGCACCACTGTGCCGCGCCCTGCTCC
 CTACTCCAAGCTCTGCCTCAGCGGATGTACAGTGTCTACCAAAGAGGACTTTAGACTTGCAAGTGCC
 TTTTCATCAGATACTTCTTCTTC

ACGCGTACGCGGCCGCTCGAGCAGAACTCATCTCAGAAGAGGATCTGGCAGCAAATGATATCCTGGATT
 ACAAGGATGACGACGAT AAGGTTTAA

Protein Sequence:

>RC230602 representing NM_001172435
 Red=Cloning site Green=Tags(s)

MAADSEPESEVFEITDFTTASEWERFISKVEEVLNDWKLIGNSLGKPLEKGIFTSGTWEEKSDEISFADF
 KFSVTHHYLVQESTDKEGKDELLEDVVPQSMQDLLGMNDFPPRAHCLVRWYGLREFVVIAPAAHSDAVL
 SESKCNLLSSVSIALGNTGCQVPLFVQIHHKWRRMYVGECCQGPVTRDFEMVHLRKVPNQYTHLSGLLD
 IFKSKIGCPLTPLPPVSIARFITYVLQDWQYFWPQQPPDIDALVGGVGGLEFGKLPFGACEDPISELH
 LATTWPHLTEGIIVDNDVYSDLDPIQAPHWSVRVKAENPQCLLDGDFVTEFFKICRRKESTDEILGRSAF
 EEEGKETADITHALSKL TEPASVPIHKL SVSNMVHTAKKKIRKHRGVEESPLNNDVLTNTILLFLFPDAVS
 EKPLDGTSTDNNPPSESEDYLNQFKSAPSDSLTYKLALCLCMINFYHGGLKGVHLWQEFVLEMRF
 RWENNFLIPGLASGPPDLRCCLLHQKLQMLNCCIERKKARDEGKKTASADVTNIYPGDAGKAGDQLVPDN
 LKETDKEKGEVGSWDSWSDSEEEFFECLSDTEELKGNQESGKKGGPKEMANLRPEGRLYQHGLTLLH
 NGEPLYIPVTQEPAPMTEDLLEEQSEVLAKLGTSAEGAHLRARMQSACLLSDMESFKAANPGCSLEDFVR
 WYSPRDYIEEEVIDEKGNVVLKGEL SARMKIPSNMWVEAWETAKPIPARRQRRLLFDDTREAQKVLHYLAI
 QKPADLARHLLPCVIHAAVLKVKEEESLENISSVKKIIKQIISHSSKVLHFPNPEDKKLEEIIHQITNVE
 ALIARARSLKAKFGTEKCEQEEEKEDLERFVSCLEQPEVLTGAGRGHAGRIIHKLFVNAQRLTESSDE
 AAAMTPPEEELKRMGSPEERRQNSVSDFPFPPAGREFILRTTVPRPAPYSKALPQRMYSVLTKEDFRLAGA
 FSSDTSFF

TRTRPLEQKLI SEEDLAANDILDYKDDDDKV

Chromatograms:

https://cdn.origene.com/chromatograms/mk8036_f04.zip

Restriction Sites:

Sgfl-Mlul

Cloning Scheme:


ACCN: NM_001172435

ORF Size: 2964 bp

OTI Disclaimer: The molecular sequence of this clone aligns with the gene accession number as a point of reference only. However, individual transcript sequences of the same gene can differ through naturally occurring variations (e.g. polymorphisms), each with its own valid existence. This clone is substantially in agreement with the reference, but a complete review of all prevailing variants is recommended prior to use. [More info](#)

OTI Annotation: This clone was engineered to express the complete ORF with an expression tag. Expression varies depending on the nature of the gene.

Components: The ORF clone is ion-exchange column purified and shipped in a 2D barcoded Matrix tube containing 10ug of transfection-ready, dried plasmid DNA (reconstitute with 100 ul of water).

- Reconstitution Method:**
1. Centrifuge at 5,000xg for 5min.
 2. Carefully open the tube and add 100ul of sterile water to dissolve the DNA.
 3. Close the tube and incubate for 10 minutes at room temperature.
 4. Briefly vortex the tube and then do a quick spin (less than 5000xg) to concentrate the liquid at the bottom.
 5. Store the suspended plasmid at -20°C. The DNA is stable for at least one year from date of shipping when stored at -20°C.

RefSeq: [NM_001172435.2](#)

RefSeq ORF: 2967 bp

Locus ID: 22930

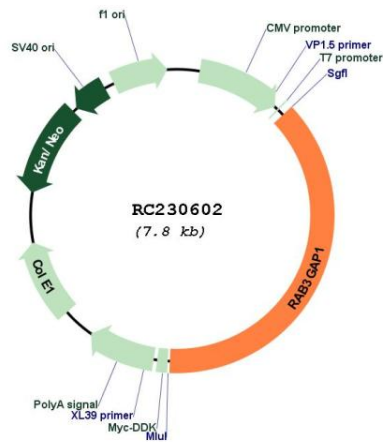
UniProt ID: [Q15042](#)

Cytogenetics: 2q21.3

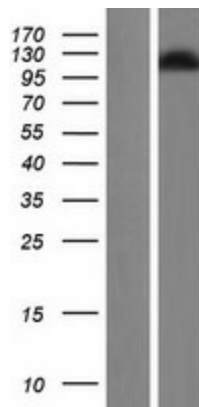
MW: 111.7 kDa

Gene Summary: This gene encodes the catalytic subunit of a Rab GTPase activating protein. The encoded protein forms a heterodimer with a non-catalytic subunit to specifically regulate the activity of members of the Rab3 subfamily of small G proteins. This protein mediates the hydrolysis of GTP bound Rab3 to the GDP bound form. Mutations in this gene are associated with Warburg micro syndrome. Alternate splicing results in multiple transcript variants.[provided by RefSeq, Feb 2010]

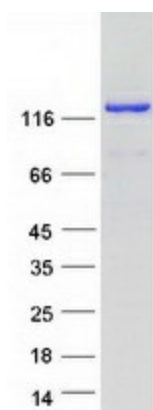
Product images:



Circular map for RC230602



Western blot validation of overexpression lysate (Cat# [LY433601]) using anti-DDK antibody (Cat# [TA50011-100]). Left: Cell lysates from untransfected HEK293T cells; Right: Cell lysates from HEK293T cells transfected with RC230602 using transfection reagent MegaTran 2.0 (Cat# [TT210002]).



Coomassie blue staining of purified RAB3GAP1 protein (Cat# [TP330602]). The protein was produced from HEK293T cells transfected with RAB3GAP1 cDNA clone (Cat# RC230602) using MegaTran 2.0 (Cat# [TT210002]).