

## Product datasheet for **RC230595**

### SEMA6C (NM\_001178061) Human Tagged ORF Clone

#### Product data:

Product Type:	Expression Plasmids
Product Name:	SEMA6C (NM_001178061) Human Tagged ORF Clone
Tag:	Myc-DDK
Symbol:	SEMA6C
Synonyms:	m-SemaY; m-SemaY2; SEMAY
Mammalian Cell Selection:	Neomycin
Vector:	pCMV6-Entry (PS100001)
E. coli Selection:	Kanamycin (25 ug/mL)



[View online »](#)

**ORF Nucleotide Sequence:**

>RC230595 representing NM\_001178061  
 Red=Cloning site Blue=ORF Green=Tags(s)

TTTTGTAATACGACTCACTATAGGGCGGCCGGAATTCGTCGACTGGATCCGGTACCGAGGAGATCTGCC  
 GCC**CGGATCGCC**

ATGCCCGTGCCCCCACTTCATGCCCTTGCTGCTACTGCTGCTGCTGCTCTCACTTCCCCATACTCAGG  
 CCGCCTTTCCCCAGGACCCCTCCTCTGTTGATCTCTGACCTTCAAGGTAAGTCTCCCATATCCTGGTT  
 TCGGGGCTGGAGGATGATGCTGTGGCTGCAGAACTTGGGCTGGACTTTCAGAGATTCTGACCTTGAAC  
 CGGACCTTGCTAGTGGCTGCCGGGATCACGTTTTCTCCTTCGATCTTCAAGCCGAAGAAGAAGGGGAGG  
 GGCTGGTGCCCAACAAGTATCTAACATGGAGAAGCAAGATGTGGAGAAGTGTGCTGTACGGGAAAGCT  
 GACGGATGAGTGTACAATAATTCGTGTTCTTGTTCCTGGGACTCCCAGACGCTCCTTGCTGTGGA  
 ACGAACTATTACGCCCTGTGTGCCGACGATGGGATAACTTCGCTGCAGCAGGAGGGTGAGGAACTGA  
 GTGGGCAGGCTCGATGCCCTTTGATGCCACCCAGTCAAACGTGGCCATCTTTCAGAGGGCAGCCTGTA  
 CTCAGCCACAGCTGCGGATTTCCAGGCCAGTGTGCTGTAGTTTACAGAAGCCTTGGGCCCCAGCCCCA  
 CTCGGCTCCGCCAAGTATGACTCCAAGTGGCTCCGAGAGCCACACTTTGTCCAGGCTTGGAGCATGGAG  
 ACCATGTCTACTTCTTCTCCGCGAGGTCTCTGTGGAGGATGCTCGGCTGGGGAGGGTGCAGTTCTCCCG  
 CGTAGCCCGAGTATGTAACGTGACATGGGCGGCTCGCCTCGGGCCTTGGACCGCACTGGACATCCTTC  
 CTGAAGCTTCGGCTCAACTGCTCTGTCCCTGGGACTCTACTTTCTATTTTATGATGTTTTACAGGCCCTGA  
 CTGGGCTGTGAACCTGCATGGCCGCTCTGCTCTCTTGGGGTCTTACCACCCAGACCAATAGCATCCC  
 TGGCTCTGCCGCTGCGCCTTCTACCTGGATGAGATTGAGCGTGGGTTTGGAGGCAAGTTCAAGGAGCAG  
 AGGAGTCTGGATGGGGCTGGACTCCTGTGCTGAGGACAGAGTCCCTCACCCAGGCCAGGATCCTGTG  
 CAGGAGTAGGGGAGCTGCCTTGTCTCCTCTTCCCGAGACCTCCCTGATGATGTCTGACTTTCATCAA  
 GGCTCACCCGCTGCTGGACCCCGCTGTACCACCTGTACCACATCAGCCTCTACTCACTCTCACTAGCAGG  
 GCCCTACTGACCAAGTAGCTGTGGATGGCATGGCTGGTCCCCACAGTAACATCACAGTCATGTTCTTGT  
 GCTCCAATGATGGGACAGTGTGAAGGTGCTGACCCAGGTGGCGATCCGGGGGACCTGAGCCCATCCT  
 CCTGGAAGAGATTGATGCCTACAGCCCTGCCCGGTGCAGTGGAAAGCGGACAGCCCAAACAGCACGACGG  
 ATCATAGGGCTGGAGCTGGACACTGAGGGTACAGGCTTTTTGTGGCTTTTTCTGGCTGTATTGTCTACC  
 TCCCTCTCAGCCGGTGTGCCCGCATGGGGCTGTGAGGAGCTGTTGGCTTCTCAGGACCCATACTG  
 TGGATGGCATAGCTCCAGGGCTGTGTGGATATCAGGGGATCTGGTGGGACTGATGTGGATCAGGCTGGG  
 AACCAGGAATCCATGGAGCATGGTACTGCAAGATGGAGCTACTGGGAGTCAGTCTGGCCCTGGGGATT  
 CTGCTTATGTGCTTCCGGTCTCGGCCCTTCCCTGGGACCCCAAGTCTCCAGTGTGCCACCCCGG  
 GCCCAGTCTTCACTCTTGGAGTTCACACTCGGGGCGTGCGCCGGGACCTGCCCCAGCCTCGGCCCTCC  
 CGCTCCGTCCCCATCCCCTCCTCGCCAGTGTGGCCGACGTTTTGCCCTGGGGCCTCAGTCTCTG  
 GCCTCCTGGTCTCCTGTGCTTGTGCGCCGCCCCACCGAGCTCGGGGCAAGGACATCGAGACTCCGGGGCT  
 CCCGCGCCTCTCCTCCCGAGTTTGGCCCGGCTCCACGGTGGGGGCCAGAGCCCCCGCCGCTCC  
 AAGGACGGGGACGCGGTGCAGACGCCGACGCTCTACACCCTTCTGCCGCTCCGGAGGGCGTGCCCC  
 CGCCGGAGCTGGCTGCCTGCCACCCCGAGTCCACGCCGAGCTGCCGGTCAAGCACCTCCGCGCCG  
 CGGGGACCCCTGGGAGTGAACCAAGCAAGCAAGCAAGCAAGCAAGCAAGCAAGCAAGCAAGCAAGCAAG  
 CACGCGCGGGGCGGCCCGCCCGCTGCTGGTGAAGCCACCGCCCGCGGCTGTCCCGGAGGCGG  
 TGAAGTCAACCCCTGGAGAACTGCTGCGCTACCTGCACGGCCCGAGCCGCCAGAAAGGGGGCGGA  
 GCCCCCGCCCTTAACTCGCGGGCGCTCCCGCCGAGCCCGCCCGCCCTCTTGGCGGCCCCAGC  
 CCCAGGCCCCACGAGTGCCTCGCCGCTGAGGCTGGACGTGCCCCCGAGGGCAGGTGCCTCTGCC  
 CCGCCCGCCCGCTCTCGCCCGCTCCCGGCTGGGCGTGGCGGAGGCGGAGGTTGCCTTTCTC  
 CGGCCACCGGGCCCCCTGCCCTGCTCACTCGAGTCCCTCGGGAGTCCCTCCAGGACTCCGGGGT  
 CCCGGGAAGCACCTCTGTACTGGGCCGCCCCGAGGGTACCGGGGCGCCCTGAAAAGGGTGGACG  
 TCGAGAAGCCCCAGTTGCTTGAAGCCTCCCTCGTGGGCCCTCTCCCGCCAGGCCGCTCCGAACGG  
 CGGCCGTTTCACTTT

**ACGCGT**ACGCGGCGGCTCGAGCAGAACTCATCTCAGAAGAGGATCTGGCAGCAAATGATATCCTGGATT  
 ACAAGGATGACGACGATAAGGTTTAA

**Protein Sequence:** >RC230595 representing NM\_001178061  
 Red=Cloning site Green=Tags(s)

MPRAPHFMPLLLLLLLLSLPHTQAAFPQDPLPLLSDLQGTSPLSWFRGLEDDAVAAELGLDFQRFLLTN  
 RTLLVAARDHVSFDLQAEEEGGLVFNKYL TWRSQDVENCAVRGKL TDECYNYIRVLPWDSQTLACG  
 TNSFSPVCRSYGITSLQQEGEELSGQARCPFDATQSNVAIFAEGSLYSATAADFQASDAVVYRSLGPQPP  
 LRSKAYDSKWLREPHFVQALEHGDHVVFFREVSVEDARLGRVQFSRVARVCKRDMGGSPRALDRHWTSF  
 LKLRNLNCSVPGDSTFYFDVLQAL TGPVNLHGRSALFGVFTTQNSIPGSVAVCAFYLDEIERGFEGKFKEQ  
 RSLDGAWTPVSEDRVPSRPGSCAGVGGAA LFSSRDLPDDVLT FIKAHPLLDPAVPPVTHQPLLTLSR  
 ALLTQVAVDGMAGPHSNITVMFLGSNDGTVLKVLTPGGRSGGPEPILLEEIDAYSPARCSGKRTAQTARR  
 IIGLELDTGHRLFVAFSGCIVYLPLSRCARHGACQRSCLASQDPYCGWHSSRGCVDIRGSGGTDVDQAG  
 NQESMEHGDCQDQATGSQSGPGDSAYVLPGPGSPGTPSPPSDAHPRPQSSTLGVHTRGVRRDLPPASAS  
 RSVPIPLLLASVAAAFALGASVSGLLVSCARRAHRRRGKDIETPGLPRPLSLRSLARLHGGPEPPPPS  
 KDGDAVQTPQLYTTFLPPPEGVPPPELACLPTPESTPEL PVKHLRAAGDPWEWNQNRNNAKEGPGSRGG  
 HAAGGPAPRVLVRPPPGCPGQAVEVTTLEELLRYLHGPQPPRKGAEPPAPLTSRALPPEPAPALLGGPS  
 PRPHECASPLRLDVPPEGRCASAPARPAL SAPAPRLG VGGGRRLPFSGHRAPPALLTRVPSGGPSRYSGG  
 PGKHLLYLGRPEGYRGRALKRVDVEKPQLSLKPPLVGPSSRQAVPNGGRFNF

TRTRPLEQKLISEEDLAANDILDYKDDDDKV

**Restriction Sites:**

Sgfl-MluI

**Cloning Scheme:**

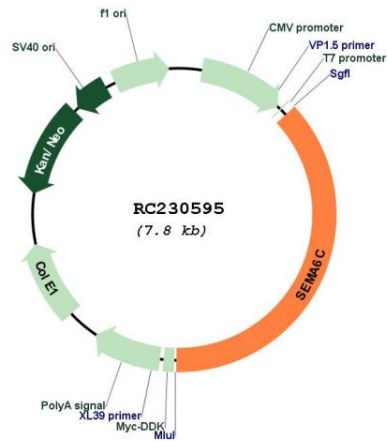


**ACCN:** NM\_001178061

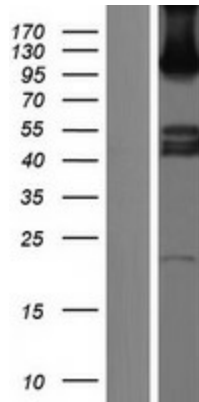
**ORF Size:** 2886 bp

<b>OTI Disclaimer:</b>	The molecular sequence of this clone aligns with the gene accession number as a point of reference only. However, individual transcript sequences of the same gene can differ through naturally occurring variations (e.g. polymorphisms), each with its own valid existence. This clone is substantially in agreement with the reference, but a complete review of all prevailing variants is recommended prior to use. <a href="#">More info</a>
<b>OTI Annotation:</b>	This clone was engineered to express the complete ORF with an expression tag. Expression varies depending on the nature of the gene.
<b>Components:</b>	The ORF clone is ion-exchange column purified and shipped in a 2D barcoded Matrix tube containing 10ug of transfection-ready, dried plasmid DNA (reconstitute with 100 ul of water).
<b>Reconstitution Method:</b>	<ol style="list-style-type: none"><li>1. Centrifuge at 5,000xg for 5min.</li><li>2. Carefully open the tube and add 100ul of sterile water to dissolve the DNA.</li><li>3. Close the tube and incubate for 10 minutes at room temperature.</li><li>4. Briefly vortex the tube and then do a quick spin (less than 5000xg) to concentrate the liquid at the bottom.</li><li>5. Store the suspended plasmid at -20°C. The DNA is stable for at least one year from date of shipping when stored at -20°C.</li></ol>
<b>RefSeq:</b>	<a href="#">NM_001178061.2</a>
<b>RefSeq ORF:</b>	2889 bp
<b>Locus ID:</b>	10500
<b>UniProt ID:</b>	<a href="#">Q9H3T2</a>
<b>Cytogenetics:</b>	1q21.3
<b>Protein Pathways:</b>	Axon guidance
<b>MW:</b>	103.3 kDa
<b>Gene Summary:</b>	This gene encodes a member of the semaphorin family. Semaphorins represent important molecular signals controlling multiple aspects of the cellular response that follows CNS injury, and thus may play an important role in neural regeneration. [provided by RefSeq, May 2010]

Product images:



Circular map for RC230595



Western blot validation of overexpression lysate (Cat# [LY433594]) using anti-DDK antibody (Cat# [TA50011-100]). Left: Cell lysates from untransfected HEK293T cells; Right: Cell lysates from HEK293T cells transfected with RC230595 using transfection reagent MegaTran 2.0 (Cat# [TT210002]).