

Product datasheet for **RC230588**

CFAP251 (NM_001178003) Human Tagged ORF Clone

Product data:

Product Type:	Expression Plasmids
Product Name:	CFAP251 (NM_001178003) Human Tagged ORF Clone
Tag:	Myc-DDK
Symbol:	CFAP251
Synonyms:	CaM-IP4; SPGF33; WDR66
Mammalian Cell Selection:	Neomycin
Vector:	pCMV6-Entry (PS100001)
E. coli Selection:	Kanamycin (25 ug/mL)



[View online »](#)

ORF Nucleotide Sequence:

>RC230588 representing NM_001178003
 Red=Cloning site Blue=ORF Green=Tags(s)

TTTTGTAATACGACTCACTATAGGGCGGCCGGGAATTCGTCGACTGGATCCGGTACCGAGGAGATCTGCC
 GCC**CGATCGCC**

ATGTCAGATGCAGCAGAAGCTCCCCGAGAAGCAACAGGAGAAAAATGGAGAAACAGAAATGAAAGAAGAGG
 AGGAACCTAATCCAAATTATAAAGAAGTAGAAGATCCACAACAGGAATCAAAGATGACACAATAGCATG
 GAGAGAGTCTCAGGAGGAGGAGGAAAAACGGCGAGGAGGAAGGGGAGGAGGGGAAGGAGGACAAA
 AAGATTGTCATGGAAGAACTGAGGAAAAGGCTGGAGAAGTCCAAGAGAAGGAGGCTTCAGGAATACAGG
 AAGAAACCACAGTAGAGCCCAAGAAGTACAGCGTCCATGATCCGTTTGGAGACACAGATTACTGATTC
 CCAGTCAATCACATCAGGAATTTCCAAAAACCAAAGAGGTAGCAAGTCAAAGCTTTCCTTACAATTG
 GAGGATGCAGAAACAGATGAGCTTTAAGAGACCTGAGCACACAAATTGAATTTCTTGATTTGGATCAA
 TCAGTCTGAGGAACAACAGATTAGTCCCTGAAAGGCAGCCCTCAGGAGAGCTTGAGGAGAAAACCGA
 CCGGATGCCCAAGATGAACTGGGACAAGAAAGAGGGACTTGGAGCCAGAAAACAGAGAGGAGGGACAA
 GAAAGGAGAGTATCCGACATCCAGTCCAAGCAGGGATCTCCCGGAGTCACTGGTGTCCAGCACCCAG
 AGGACATTCTGTTTCAAAGGATAAAAGCACCCCGGTGTATCCCTTGACCATGACCTGGTCGTTGGATG
 GAACAGTTCTTCTGTTTACTATATTCGAGAGGAAAGGCAGAGAGTCTTCTGTATGTTTGTGCTCAC
 ACTGCGATCATCTACAACGTGTTTCAGGAACAATCAATACCACCTTCAGGGCCACGCCAATATTATCTCT
 GCCTCTGCGTCAGTGAAGACAGGCGGTGGATCGCCACAGCAGACAAAAGGGCCAGACTGCCTGGTGATTAT
 ATGGGACTCCTTACAGGTATTCCTGTGCACACAATTTGACAGCTGCCCTGAAGGGAATGGCATCATG
 GCCATGGCCATGACCCACGACGCAAGTATCTGGCAACCATCTCAGATGCTGAAGTCCAGAAGGTATGCA
 TCTGGAAGTGGACTTTGGCAGTGGAAAGCCAGCATGCACTCTCGAACTCCCCACAGATACGGTGTTC
 GAAGTACGTTACTTTTAAACCAACAATAATAAAGAATTGGTGAGCAATAGTAAAAACAGGGCAATATAT
 TATGCATGGTATGAAGAGAGGGATACACTGGCTCACAGTGCCCACTTTTAACTGAAAAACCTTCAACA
 AGCTTGTGGGAAAGTTTAGCCAGTCCATCTTCACTTGAATTTAACACAAATACTCTCAGCCACAATGGA
 AGGGAAGCTGGTGTCTGGGACATACACCGCCACCCTCATCTGCCTCCACCTTTTTGGGCTTCCCTAT
 ATCAAGCCTTGTAAATTGGTTCATTTGCAGAAAGAGGGTATCACGGTACTTACCACAATTGATAGCTACA
 TTGTCACAGGTGACATTAAGGGGAACATTAAGTCTATGATCACACCCTGTCTATTGTTAACTGGTACAG
 TCACTTGAAGTGGGCGCCATAAGAAGTCTGTCCTTTTCAAAGACCCAGCAACTCCTCCTACTGAAAA
 TCAAATATCCTCCTGACTGCATTTAAAAGGTGACCTTTTTGTCTTAAGGAATTTATCATTGGAACAT
 CTGATGCCGCGGTGTACCACTTAACAACAGATGGGACCAAACCTGAGAAGTTATTTGTAGAGCCCAAGGA
 TGCCATTTGTGCCATCTCCTGCCACCCATATCAACCCCTCATTGCCATCGGGAGCATCTGTGGGATGATC
 AAAGTGTGGAATTATGAAAAACAACAATATCTTTTTCAGCAGGGTTTTTGGAAAGGGGCTTGAGTCCAGA
 GTCTGACCTACAACCCGAAGGAGCCCTTCTTGGAGCTGGCTTACAGAGGGGACAGTTTACATTCTTGA
 TGCAATGTCTTTAGAAAATGAAAGCCAGAGCCTTCAAATATCCAGAACCAGTGTGACTCATATAAGC
 TTTTCCCATGACTCCCAGTATATGGCAACTGCTGATAGAAGTTTTACTGTGGCTGTTACATGCTGGTGG
 TCAGAAAATGGACAGAGGGTCTGGGAGTACTTAGCAAGACTTCGCTCTCATCGAAAAGCATTGCAAGTCT
 CCTGTTTGGGGTTTACCTGGACAGCAATGAGCCTAGACTGCTGAGCCTTGGGACAGACAGGCTCTTGATA
 GAGTATGATCTTCTCAGGAGCTACAAAGACCCTGGAAGTCTGGACATTCAACACACCGACCAGGGCT
 GCTATCCACCTGCATGGTCTGGTACCCACCCTCACCAGGGAACCTTCTGCTTATTTGCAACAGTGG
 CTACAAAGTGAAGCTTTTAAATGCTACTACCAAAATGTGCAGAAAGACGCTTCTGGGGCCAGCTTATGGT
 TCCCTATTGAGCAGACACAAGTCTCCAGTGAGAAGCATGGCGGAGCTACAGAAACGCTACTTGGTGT
 TTATTAACAGAGACAAGGTGGGACTTCAGATCTTACCAGTTGACGGCAATCCACATAAGACATCTGCTAT
 TGTTTGCACCCGAACGGGTGGCCGCATGGCCGTTTCTATGATGGCTGCTACGCCTTCACTGCGGGA
 GGGCACGATCGCTCGGTGGTGCAGTGGAAAATCACCTTAAGCCATCTGGGAGCCAGGCACCAATATTAT
 CCCCATCAGACACATCAAGAAGC

ACGCGTACGCGGCCGCTCGAGCAGAAACTCATCTCAGAAGAGGATCTGGCAGCAAATGATATCCTGGATT
 ACAAGGATGACGACGATAAGGTTTAA

Protein Sequence: >RC230588 representing NM_001178003
 Red=Cloning site Green=Tags(s)

```
MSDAAEAPREATGENGETEMKEEEEEPNPNYKEVEDPQQESKDDTIAWRESQEERKTGEEEGEEGKEDK
KIVMEETEEKAGEVQEKEASGIQEETTVEPQEVASMIRLETQITDSQSITSGIFPKTQRGSKSLSLQL
EDAETDELLRDLSTQIEFLDLQISPEEQIISPERQPSGELEEKTRMPQDELQERRDLEPENREEGQ
ERRVSDIQSKAGISRESLVSSSTEDILFQKDKSTPVYPLTMTWSFGWNSSLPVYYIREERQVLLVYCAH
TAIIYNVFRNNQYHLQGHANIIISCLCVSEDRRWIATADKGPDCLVIIWDSFTGIPVHTIFDSCPEGNGIM
AMAMTHDAKYLATISDAEVQKVCWKWTLAVETPACTLELPTEYGVQNYVTFNPTNNKELVSNKTRAIY
YAWYEERDTLAHSAPLLTEKTFNKLVGKFSQSIFHLNLQILSATMEGKLVVWDIHRPPSSASTFLGFPY
IKPCKLVHLQKEGITVLTIDSYIVTGDIKGNIKFYDHTLSIVNWYSHLKLGAIRTLFSKTPATPPTTEK
SNYPPDCTLKGDLFVLRNFIIGTSDAAVYHLTTDGTKLEKLFVEPKDAICAI SCHPYQPLIAIGSICGMI
KVWNYENKQYLF SRVFEKGLGVQSLTYNPEGALLGAGFTEGTVYILDAMSL ENESPEPFKYSRTSVTHIS
FSHDSQYMATADRSFTVAVYMLVVRNGQRVWEYLARLRSHRKSIRSL LFGVYLD SNEPRLLSLGTDRLLI
EYDLLRSYKDHLEVLDIHHTDQGCYPTCMVWYPPLTREL FLLICNSGYKVKLFNATTKMCRKTLLGPAYG
SPIEQTQVLPVRSMAELQKRYLVFINRDKVGLQLIPVDGNPHKTS AIVCHPNGVAGMAVSYDGCYAFTAG
GHDRSVVQWKITLSHPGSQAPILSPDTSRS
```

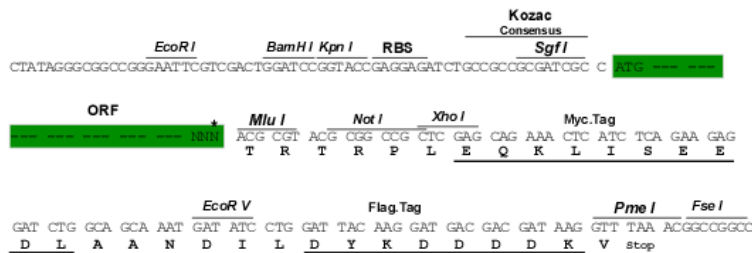
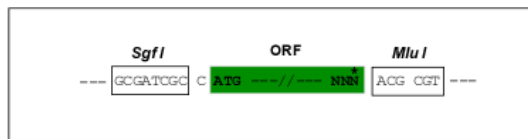
TRTRPLEQKLISEEDLAANDILDYKDDDDKV

Chromatograms: https://cdn.origene.com/chromatograms/mk8036_f07.zip

Restriction Sites: SgfI-MluI

Cloning Scheme:

Cloning sites used for ORF Shuttling:



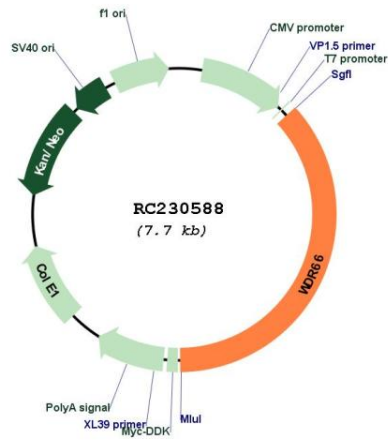
* The last codon before the Stop codon of the ORF

ACCN: NM_001178003

ORF Size: 2823 bp

OTI Disclaimer:	The molecular sequence of this clone aligns with the gene accession number as a point of reference only. However, individual transcript sequences of the same gene can differ through naturally occurring variations (e.g. polymorphisms), each with its own valid existence. This clone is substantially in agreement with the reference, but a complete review of all prevailing variants is recommended prior to use. More info
OTI Annotation:	This clone was engineered to express the complete ORF with an expression tag. Expression varies depending on the nature of the gene.
Components:	The ORF clone is ion-exchange column purified and shipped in a 2D barcoded Matrix tube containing 10ug of transfection-ready, dried plasmid DNA (reconstitute with 100 ul of water).
Reconstitution Method:	<ol style="list-style-type: none">1. Centrifuge at 5,000xg for 5min.2. Carefully open the tube and add 100ul of sterile water to dissolve the DNA.3. Close the tube and incubate for 10 minutes at room temperature.4. Briefly vortex the tube and then do a quick spin (less than 5000xg) to concentrate the liquid at the bottom.5. Store the suspended plasmid at -20°C. The DNA is stable for at least one year from date of shipping when stored at -20°C.
RefSeq:	NM_001178003.2
RefSeq Size:	3470 bp
RefSeq ORF:	2826 bp
Locus ID:	144406
UniProt ID:	Q8TBY9
Cytogenetics:	12q24.31
MW:	106.31 kDa
Gene Summary:	This protein encoded by this gene belongs to the WD repeat-containing family of proteins, which function in the formation of protein-protein complexes in a variety of biological pathways. This family member appears to function in the determination of mean platelet volume (MPV), and polymorphisms in this gene have been associated with variance in MPV. Alternative splicing of this gene results in multiple transcript variants. [provided by RefSeq, Sep 2011]

Product images:



Circular map for RC230588