

Product datasheet for **RC230583**

Sodium bicarbonate transporter like protein 11 (SLC4A11) (NM_001174090) Human Tagged ORF Clone

Product data:

Product Type:	Expression Plasmids
Product Name:	Sodium bicarbonate transporter like protein 11 (SLC4A11) (NM_001174090) Human Tagged ORF Clone
Tag:	Myc-DDK
Symbol:	Sodium bicarbonate transporter like protein 11
Synonyms:	BTR1; CDPD1; CHED; CHED2; dj794I6.2; NABC1
Mammalian Cell Selection:	Neomycin
Vector:	pCMV6-Entry (PS100001)
E. coli Selection:	Kanamycin (25 ug/mL)



[View online »](#)

ORF Nucleotide Sequence:

>RC230583 representing NM_001174090
 Red=Cloning site Blue=ORF Green=Tags(s)

TTTTGTAATACGACTCACTATAGGGCGGCCGGGAATTCGTCGACTGGATCCGGTACCGAGGAGATCTGCC
 GCC**CGCATCGCC**

ATGGGCGTTTATGGCCCCAGGACCGGTCTGAGAGTGAGAAGAGGGATGTGCAGAGAGATCCCCCGCTT
 GGCATCCGAGGAGAGAGGGGAGAGGCCCGCTCGGGCCCGTCCCTTCTCTCGCTGCAGCGGGCAGGG
 TTTTCTCAGGAAAACCTGGATTAGCGAACATGAAAACCTCCACCATGTGCGAGAATGGATACTTCGAG
 GATTCAAGCTACTACAAGTGTGACACAGATGACACCTTGAAGCCCGAGAGGAGATCCTGGGGGATGAGG
 CCTTCGACACTGCCAACTCCTCCATCGTGTCTGGCGAGAGTATCCGTTTTTTGTCAATGTCAACCTTGA
 GATGCAGGCCACCAACTGAGAATGAAGCGACTTCCGGTGGCTGTGTGCTCCTGCACACCTCCCGAAAAG
 TACCTGAAGTTAAAGAACTTCAAGGAAGAGATCCGTGCGCACCCGACCTAGATGGCTTCTGGCGCAGG
 CCAGCATCGTCTGAACGAGACGGCCACCTCCCTGGATAACGTGTGCGGACCATGCTTCGCGCTTCGC
 CAGGGACCTGACAACAATGAGCCCAACTGCAACCTGGACCTGCTCATGGCCATGCTTTCACCGATGCC
 GGGGCACCCATGCGGGGTAAAGTCCACCTGCTGTGAGATACCATCAAGGGGTACCGCCACAGTGACAG
 GGGTGGGTACCAGCAGTCTGGCTCTGCATCATCTGTACCATGAAGGCCCTACAGAAGCGGCACGTGTG
 CATCAGCCGCTGGTTCGCCACAGAATGGGGGAGAATTCCTGTGAGGTTTCGTTTCGTCATCCTGGTG
 CTGGCCCCACCAAGATGAAAAGCACTAAGACTGCGATGGAGGTGGCGCGCACGTTTCCACCATGTTCT
 CGGATATCGCCTTCGCCAGAAGCTCCTGGAGACCCGCACAGAGGAGGAATCAAGGAGGCTTGGTGCA
 TCAGAGACAGTGTCTACCATGGTGAGCCAGGTCCAGTGGCGCCGAGAACAAGGAACGCAGCACAGTC
 TCCCTCCCTGCCACAGACACCCAGAGCCCCAAAGTGAAGGACTTTGTCCCTTTGGGAAGGGCATCC
 GGGAGGACATCGCACGAGGTTCCCTTGTACCCCTTGGACTTCACTGATGGCATTATTGGGAAAAACAA
 GCGTGTGGGCAAATACATCACACCACCTGTTCTCTACTTCGCTGCCTCCTGCCACCATCGCTTTC
 GGGTCTCTCAATGACGAGAACACAGACGGGCCATCGACGTGCAGAAGCCATAGCCGGGACAGATCG
 GGGCCTGCTCTACGCGCTTCTCTGGGCAGCCATTGGTGATTCTGCTGACCACCGCGCCCTGGCGCT
 CTACATCCAGGTGATTCTGTGTCATCTGTGATGACTATGACCTGGACTTCAACTCCTTCTACGATGGACG
 GGCCTGTGGAATAGTTTCTTCTTGCCTTTATGCCTTTTCAACCTCAGCCTGGTCATGAGTCTTTCA
 AGAGGTCGACGGAGGAGATCATCGCCCTCTTCATTTCCATCACGTTTGTGCTGGATGCCGTAAGGGCAC
 GGTAAAAATCTTCTGGAAGTACTACTATGGGCATTACTTGACGACTATCACAAAAAGGACTTCAATCC
 CTTGTGACGCTGTGAGGCTCGGGCCAGCCTCAACGCCAGCCTCCACACTGCCCTCAACGCCAGCTTCC
 TCGCCAGCCCCACGGAGCTGCCCTCGGCCACACTCAGGCCAGGCGACCGCCGTGCTCAGCCTCCTCAT
 CATGCTGGGCACGCTCTGGCTGGCTACACCCTTACCAATTCAAGAAGAGCCCCCTACCTGCACCCCTGC
 GTGCGAGAGATCCTGTCCGACTGCGCCCTGCCATCGCGGTGCTCGCCTTCTCCCTCATCAGTCCCATG
 GCTTCCGGGAAATCGAGATGAGCAAGTTCGGCTACAACCCAGCGAGAGCCCCCTTTCGATGGCGCAGAT
 CCAGTCGCTGTCCCTGAGGGCCGTGAGCGGTGCCATGGGCTCGGCTTCTGCTGTCCATGCTCTTCTTC
 ATCGAGCAGAACTGGTGGCCGCTTGGTGAATGCACCGGAGAACAGGCTGGTGAAGGGCACTGCCTACC
 ACTGGGACCTCCTGCTCCTCGCCATCATCAACACAGGGCTGTCTCTGTTGGGCTGCCTTGGATCCATGC
 CGCCTACCCCCACTCCCCGCTGCACGTGCGAGCCCTGGCCTTAGTGGAGGAGCGTGTGGAGAACGGACAC
 ATCTATGACACGATTGTGAACGTGAAGGAGACCGGGCTGACCTCGCTGGGCGCCAGCGTCTGTTGGGCC
 TGTCCCTGTTGCTGCTGCCGGTCCCGCTTCAAGTGGATCCCCAAGCCCGTCTCTATGGCCTCTTCTCTA
 CATCGCGCTCACCTCCCTCGATGGCAACCAGCTCGTCCAGCGCTGGCCCTGCTGCTCAAGGAGCAGACT
 GCGTACCCCCGACACACTACATCCGGAGGGTGGCCAGAGGAAGATCCACTACTTACGGGCTGCAGG
 TGCTTCACTGCTGCTGTGTGCTTCCGATGAGCTCCCTGCCCTACATGAAGATGATCTTCCCT
 CATCATGATCGCCATGATCCCCATCCGCTATATCTGCTGCCCGAATCATTGAAGCCAAGTACTGGAT
 GTCATGGACGCTGAGCACAGGCT

ACGCGTACGCGGCCGCTCGAGCAGAACTCATCTCAGAAGAGGATCTGGCAGCAAATGATATCCTGGATT
 ACAAGGATGACGACGAT AAGGTTTAA

Protein Sequence: >RC230583 representing NM_001174090
 Red=Cloning site Green=Tags(s)

MGVYGPQDRSESEKRDVQRDPPPHPRREGERPARARSLPLAAAGQGFLRKTWISEHENSPTMSQNGYFE
 DSSYYKCDTDDTFEAREEILGDEAFDTANSSIVSGESIRFFVNVNLEMQATNTENEATSGGCVLLHTSRK
 YLKLKNFKEEIRAHRLDGLAQASIVLNETATSLDNVLRMLRRFARDPDNNEPNCNLDLLMAMLFDA
 GAPMRGKVHLLSDTIQGVATVTVGVRYQQSWLCCICTMKALQKRHVCSIRLVRPQNWGENSCEVRFVILV
 LAPPKMKSTKTAMEVARTFATMFSDIAFRQKLLLETRTEEEFKEALVHQRQLLTMVSHGVPVAPRTKERSTV
 SLPAHRHPEPPKCKDFVPFGKGIREDIARRFPLYPLDFTDGIIGKNKAVGKYITTTFLFYFACLLPTIAF
 GSLNDENTDGAIDVQKTIAGQSIGLLYALFSGQPLVILLTTAPLALYIQVIRVICDDYDLDFNSFYAWT
 GLWNSFFLALYAFFNLSLVMFLKIRSTEEIIALFISITFVLDAVKGTVKIFWKYYYGHYLLDDYHTKRTSS
 LVSLSGLGASLNASLHTALNASFLASPTELPSATHSGQATAVLSLLIMLGLWLGTYLYQFKKSPYLHPC
 VREILSDCALPIAVLAFSLISSHGFREIEMSKFRYNPSESPFAMAQIQSLSLRAVSGAMGLGFLLSMLFF
 IEQNLVAALVNAPENRLVKGTAYHWDLLLLAIINTGLSLFGLPWIIHAAYPHSPLHVRALALVEERVENGH
 IYDTIVNVKETRLTSLGASVLVGLSLLLLPVPLQWIPKPVLYGLFLYIALTSLDGNQLVQRVALLKEQT
 AYPPTHYIRRVQQRKIHYFTGLQVLQLLLLCAFGMSSLPYMKMIFPLIMIAMIPIRYILLPRIIEAKYLD
 VMDAEHRP

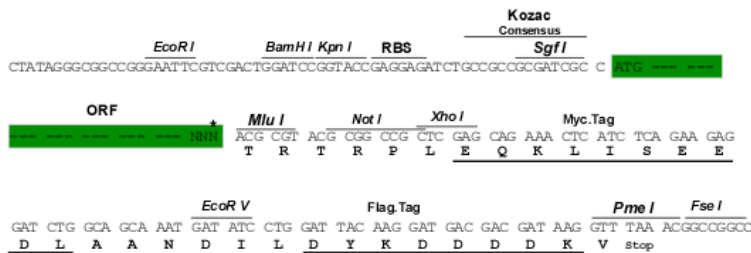
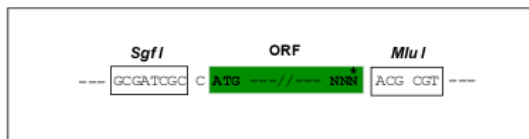
TRTRPLEQKLISEEDLAANDILDYKDDDDKV

Chromatograms: https://cdn.origene.com/chromatograms/mk8007_d03.zip

Restriction Sites: SgfI-MluI

Cloning Scheme:

Cloning sites used for ORF Shuttling:



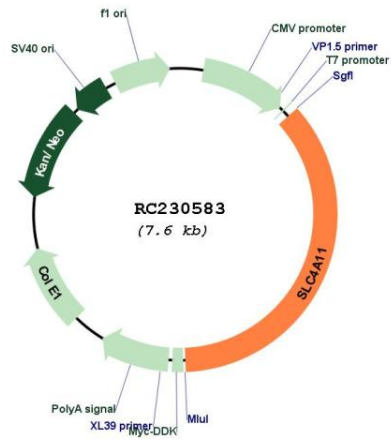
* The last codon before the Stop codon of the ORF

ACCN: NM_001174090

ORF Size: 2754 bp

OTI Disclaimer:	Due to the inherent nature of this plasmid, standard methods to replicate additional amounts of DNA in E. coli are highly likely to result in mutations and/or rearrangements. Therefore, OriGene does not guarantee the capability to replicate this plasmid DNA. Additional amounts of DNA can be purchased from OriGene with batch-specific, full-sequence verification at a reduced cost. Please contact our customer care team at custsupport@origene.com or by calling 301.340.3188 option 3 for pricing and delivery.
	The molecular sequence of this clone aligns with the gene accession number as a point of reference only. However, individual transcript sequences of the same gene can differ through naturally occurring variations (e.g. polymorphisms), each with its own valid existence. This clone is substantially in agreement with the reference, but a complete review of all prevailing variants is recommended prior to use. More info
OTI Annotation:	This clone was engineered to express the complete ORF with an expression tag. Expression varies depending on the nature of the gene.
Components:	The ORF clone is ion-exchange column purified and shipped in a 2D barcoded Matrix tube containing 10ug of transfection-ready, dried plasmid DNA (reconstitute with 100 ul of water).
Reconstitution Method:	<ol style="list-style-type: none"> 1. Centrifuge at 5,000xg for 5min. 2. Carefully open the tube and add 100ul of sterile water to dissolve the DNA. 3. Close the tube and incubate for 10 minutes at room temperature. 4. Briefly vortex the tube and then do a quick spin (less than 5000xg) to concentrate the liquid at the bottom. 5. Store the suspended plasmid at -20°C. The DNA is stable for at least one year from date of shipping when stored at -20°C.
RefSeq:	NM_001174090.2
RefSeq ORF:	2757 bp
Locus ID:	83959
UniProt ID:	Q8NBS3
Cytogenetics:	20p13
Protein Families:	Transmembrane
MW:	103.6 kDa
Gene Summary:	This gene encodes a voltage-regulated, electrogenic sodium-coupled borate cotransporter that is essential for borate homeostasis, cell growth and cell proliferation. Mutations in this gene have been associated with a number of endothelial corneal dystrophies including recessive corneal endothelial dystrophy 2, corneal dystrophy and perceptive deafness, and Fuchs endothelial corneal dystrophy. Multiple transcript variants encoding different isoforms have been described. [provided by RefSeq, Mar 2010]

Product images:



Circular map for RC230583