

Product datasheet for **RC230581**

MAN1 (LEMD3) (NM_001167614) Human Tagged ORF Clone

Product data:

Product Type:	Expression Plasmids
Product Name:	MAN1 (LEMD3) (NM_001167614) Human Tagged ORF Clone
Tag:	Myc-DDK
Symbol:	MAN1
Synonyms:	MAN1
Mammalian Cell Selection:	Neomycin
Vector:	pCMV6-Entry (PS100001)
E. coli Selection:	Kanamycin (25 ug/mL)



[View online »](#)

ORF Nucleotide Sequence:

>RC230581 representing NM_001167614
 Red=Cloning site Blue=ORF Green=Tags(s)

TTTTGTAATACGACTCACTATAGGGCGGCCGGGAATTCGTCGACTGGATCCGGTACCGAGGAGATCTGCC
 GCC**CGCATCGCC**

ATGGCGGGCGCAGCAGCTTCGGCGCCTCAGCAGCTCTCGGATGAGGAGCTTTTCTCTCAGCTCCGCCGTT
 ACGGCCTGTCTCCCGACCAGTGACGGAGAGCACCCGCCGGTCTACCTCAAGAAGCTGAAGAAGCTTCG
 AGAGGAAGAGCAGCAACAGCACCGGTACAGGGGGCCGCGGCAACAAGACGGGAACAGTAATAACAATAAC
 ACGGCAGCCGCCACGGTCGCAGCCCGGGACCAGCGGGCGGGCGGCCGCGGGGATGGGGTCCGGCCGG
 TCTCGGGCAGCTCTCTACTTACGGACTCCTGGGGCCTGTGCCGAATCTCGGCCTTGCCCCAGAGAG
 CCTCTGGGAGGGCCCGGGGGCGCTCCGCCGCCCGCGGCTGGCAGCAAAGTGTCTGGGCTTCAGC
 TCGGACGAGTCGGACGTGGAGGCCAGTCCCGGGACCAGCCGGCGGGCGGGAGGAAAGACCGGGCTT
 CGTCCAGTACCGCGGGCTCAAAGCGCCCGGGCCCTGGCCGCCAGCGAGGTGACTAACAGCAACTC
 TGCAGAGCGAAGGAAGCCCACTCGTGGTGGGGGCCAGGAGGCCGGCGGGCCCGAGCTGCAGACCCCG
 CCGGGGAAAGATGGAGCAGTGGAGGACGAGGAAGGGGAGGAGAGGACGGTGGAGGAGGGACCCGGAGA
 CCGAGGAGCCGCTCTGGGCGAGCCGGACCGTGAATGGCAGCCGGCTTGTCCCCTACAGCTGCCGGAAAA
 CTATTCGACTCAGAGGAAGAGGACGACGACGAGTGGCTCCAGCAGACAGGTATTAAGGACGACTCC
 CTTTCCCGGATCGGCCAGACGAACCCATAGTAAGCCTCTCCCCCGCTGACTGCTAAATCGGCCGGCG
 GCAGGCTGGAGACTTCAGTTCAGGGAGGGGAGGACTCGCGATGAATGACAGGGCGGGCGCTGCCGGGAG
 TCTAGACAGGAGCCGAACCTCGAAGAGGGCGGGCCGGAGCAGGGAGGAGGGTGTGATCAAGTGGAC
 TCCAGCCCGTTCTAGATACCGTGTAAACGCTAAGAACTGACCCTCTCTGCCCGCCCACTTACTG
 ACATGGACTCAACCTTGGATTTCGTAACAGGCTCCCTTCTGAAAACCAATAATCATATTGGCGTGGGGC
 CTTCAAGTGGACTCCCCAGGATTTATTCTAACAGTCTCCCTCCAGTGCGGCGGTGGCCGCTCTAGT
 TCACTCAGGATCAATCACGCAATCATACGGGCTCCAATCATACCTACCTGAAAAACACATAACAACAAAC
 CGAAGCTTTCGAACCCGAAGAGGAACCTTCCAGCAATTTAAACGGGAGGAGGTGCCCAACAGGGAG
 TTTCAAGTCCCACTACTTGTGATGTTTCTTAACTGCTGCCTGCTATTTTTCTAATACTGGGACTG
 ACTTACCTAGGAATGAGAGGGACAGGATCTGAGGATGGAGAAGTCAAGCAAAACCCCTTTGGTGA
 CATTGGAAAAATACAAGAAAGTAAAAAACTCTTATGATGAACACATTATAAGCTTCATGATCGATT
 GGCACAGCTTGCAGGAGATCATGAATGTGGCAGTCTAGTCAAAGAACGCTTTCTGTTCAAGAGGCAGT
 GCGTATTTAAAAGATTTAGTCTGAATATGAAGTATATTTAACTTCAATGCAAGTGGATCTTAGAAA
 ATGGAAAAGATGTTGGAATAAGGTGTGTTGGTTTTGGCCCTGAGGAAGATTGACAAATATAACTGATGT
 GCAGTTTTTACAGTCCACAAGACCACTGATGTCTTTTTGGTGTGTTTTCGACGTGCTTTTGTACTGTA
 ACTCACAGATTATTGTTGTTATGCTTAGGTGTAGTGTGTTTGTGTCGTTTACATGAAATATC
 GATGGACAAAAGAAGAGGAGGAAACAAGGCAGATGTATGATATGGTGGTAAAGATTATAGATGTTTTACG
 AAGTCATAATGAAGCCTGCCAGGAAAAACAAGATTTACAACCTTACATGCCTATTCACATGTACCGGAT
 TCCTTAATACAGCCTCATGACAGGAAAAAATGAAGAAAGTCTGGGATAGAGCTGTTGACTTCTTGCTG
 CTAATGAGTCTAGAGTTCGCACGGAAACACGAAGAATAGGTGGTGCAGATTTTCTGGTTTGGCGGTGGAT
 CCAGCCTTCTGCATCCTGTGACAAAATATTAGTTATACCTTCTAAAGTATGGCAAGTCAAGCATTTCA
 TTAGATAGAAGAAATTCACCACCAATAGTTTGACACCGTGTCTAAAGATTTCGGAATATGTTTGATCCCG
 TTATGAAATAGGGGATCAGTGGCATTGGCAATTCGAAGAAGCAATTTAGAAAAATGCAGTGATAATGA
 TGGCATTGTTACATTGCAGTAGACAAAATTCACGTGAGGGTTGTGATATGTTAAATGTCTGTCTCCA
 GAATATGCTGAAAGGCTTTTAAAGCATTGCATGGCTCTTGGTTTGTGGGAAATTTGTTACAGTAAAT
 ATTTACGACTAGATAGATACCACCATCGCTTCCCGAGGCTCTCACTTCCAACACTCCATTGAAGCCATC
 AAATAACATATGAACCTCATGTCTCTCTCGTCTTCCGACTGGCTAACCAATTTCAAGGAAGTCC

ACGCGTACGGCGCGCTCGAGCAGAACTCATCTCAGAAGAGGATCTGGCAGCAATGATATCTGGATT
 ACAAGGATGACGACGATAAGGTTTAA

Protein Sequence: >RC230581 representing NM_001167614
 Red=Cloning site Green=Tags(s)

```

MAAAAASAPQQLSDEELFSQLRRYGLSPGPVTESTRPVYLKLLKLLREEEQQHRSGGGRGNKTRNSNNNN
TAAATVAAAGPAAAAAGMGRPVSVDLSYLRTPGGLCRISASGPESLLGGPGGASAAPAAGSKVLLGFS
SDESDVEASPRDQAGGGGRKDRASLQYRGLKAPPAPLAASEVTNSNSAERRKPHSWWGARRPAGPELQTP
PGKDGAVEDEEGEGEDGEERDPETEEPLWASRTVNGSRLVPYSCREENYSDSEEDDDDDVASSRQVLKDDSD
LSRHRPRRTHSKPLPPLTAKSAGGRLETSVQGGGLAMNDRAAAAAGSLDRSRNLEAAAAEQGGGCDQVD
SSPVPYRVNAKLLTPLLPPLTDMSTLDSSTGSLKTNNHIGGAFSVDSPRIYNSLPPSAVAASS
SLRINHANHTGSNHTYLNKTYNPKLSEPEEELLQQFKREEVSPTGSFSAHYLSMFLTTAACLFFLILGL
TYLGMRGTGVSEDEGELSKNPFGETFGKIQESEKTLMMNTLYKLDRLAQLAGDHECGSSSQRQLSVQEA
AYLKDLGPEYEGIFNTSLQWILENGKDVGIRCVGFPEEELTNIIDVQFLQSTRPLMSFWCRFRRAFVTV
THRLLLLCLGVVMVCVLRMYKYRWTKEEEETRQMYDMVVKIIDVLRSHNEACQENKDLQPYMPIPHVRD
SLIQPHDRKKMKVWDRVDFLAANESRVRTETRRIGGADFLVWRWIQPSASCDKILVIPSKVWQQAQFH
LDRRNSPPNSLTPCLKIRNMFDPVMEIGDQWHLAIQEAILEKCSNDNGIVHIAVDKNSREGCVYVKCLSP
EYAGKAFKALHGSWFDGKLVTVKYLRLDRYHHRFPQALTSNTPLKPSNKHMNSMSHLRLRTGLTNSQGSS
  
```

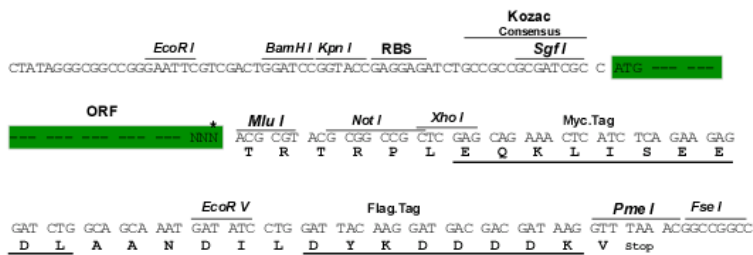
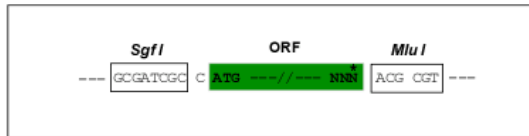
TRTRPLEQKLISEEDLAANDILDYKDDDDKV

Chromatograms: https://cdn.origene.com/chromatograms/mk8007_b10.zip

Restriction Sites: SgfI-MluI

Cloning Scheme:

Cloning sites used for ORF Shuttling:

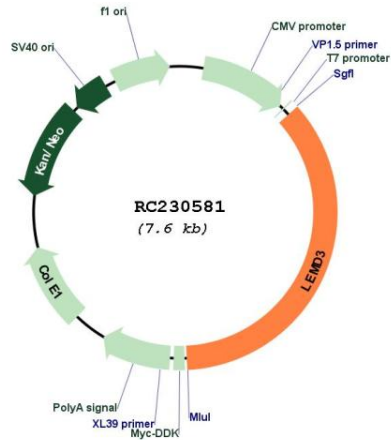


* The last codon before the Stop codon of the ORF

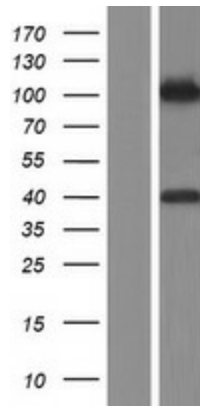
ACCN: NM_001167614

ORF Size:	2730 bp
OTI Disclaimer:	The molecular sequence of this clone aligns with the gene accession number as a point of reference only. However, individual transcript sequences of the same gene can differ through naturally occurring variations (e.g. polymorphisms), each with its own valid existence. This clone is substantially in agreement with the reference, but a complete review of all prevailing variants is recommended prior to use. More info
OTI Annotation:	This clone was engineered to express the complete ORF with an expression tag. Expression varies depending on the nature of the gene.
Components:	The ORF clone is ion-exchange column purified and shipped in a 2D barcoded Matrix tube containing 10ug of transfection-ready, dried plasmid DNA (reconstitute with 100 ul of water).
Reconstitution Method:	<ol style="list-style-type: none">1. Centrifuge at 5,000xg for 5min.2. Carefully open the tube and add 100ul of sterile water to dissolve the DNA.3. Close the tube and incubate for 10 minutes at room temperature.4. Briefly vortex the tube and then do a quick spin (less than 5000xg) to concentrate the liquid at the bottom.5. Store the suspended plasmid at -20°C. The DNA is stable for at least one year from date of shipping when stored at -20°C.
RefSeq:	NM_001167614.2
RefSeq ORF:	2733 bp
Locus ID:	23592
UniProt ID:	Q9Y2U8
Cytogenetics:	12q14.3
Protein Families:	Transmembrane
MW:	100.3 kDa
Gene Summary:	This locus encodes a LEM domain-containing protein. The encoded protein functions to antagonize transforming growth factor-beta signaling at the inner nuclear membrane. Two transcript variants encoding different isoforms have been found for this gene. Mutations in this gene have been associated with osteopoikilosis, Buschke-Ollendorff syndrome and melorheostosis.[provided by RefSeq, Nov 2009]

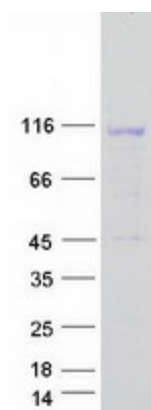
Product images:



Circular map for RC230581



Western blot validation of overexpression lysate (Cat# [LY433581]) using anti-DDK antibody (Cat# [TA50011-100]). Left: Cell lysates from untransfected HEK293T cells; Right: Cell lysates from HEK293T cells transfected with RC230581 using transfection reagent MegaTran 2.0 (Cat# [TT210002]).



Coomassie blue staining of purified LEMD3 protein (Cat# [TP330581]). The protein was produced from HEK293T cells transfected with LEMD3 cDNA clone (Cat# RC230581) using MegaTran 2.0 (Cat# [TT210002]).