

Product datasheet for **RC230553**

FAM59B (GAREM2) (NM_001168241) Human Tagged ORF Clone

Product data:

Product Type:	Expression Plasmids
Product Name:	FAM59B (GAREM2) (NM_001168241) Human Tagged ORF Clone
Tag:	Myc-DDK
Symbol:	FAM59B
Synonyms:	FAM59B; GAREML
Mammalian Cell Selection:	Neomycin
Vector:	pCMV6-Entry (PS100001)
E. coli Selection:	Kanamycin (25 ug/mL)



[View online »](#)

ORF Nucleotide Sequence:

>RC230553 representing NM_001168241
 Red=Cloning site Blue=ORF Green=Tags(s)

TTTTGTAATACGACTCACTATAGGGCGGCCGGGAATTCGTCGACTGGATCCGGTACCGAGGAGATCTGCC
 GCC**CGCATCGC**C

ATGGAGAAGCTGGCGGCCGGGTGGCCGCCTGCCTGGAGCATGGGCGCCTCCCGCTCGACCTCATCG
 TCAGCCGCTGCCGCTGCCACGCTCGCTGCCTTGGGCCAGGGAGTACGCCGAGGGCGTCAGTGAGCG
 AGACATCTGCTCATCCACTCCTGCCGGCAGTGGACAACGGTGACAGCTCATACCTGGAGGAGGGCCAC
 TATGTCATCGGGCCAAGATCGACATCCCCCTGCAGTACCCAGGGAAGTCAAGCTCTGGAACAGGCC
 GGGATGTGCGGGAGCCAGTGAGTACTTACGACGCTGGAGGAGGTGGCCAGTGTCTTCCCTGACCGCAT
 CTTCTGTATGGAAGCCATCACCTTACGCGTCAAGGTGGTGTGGGCGAGTTCAGCGAGGACAGCGAGGTG
 TACAACTTACGCTGCATGCGGGCAGCAGCTCACTCTTATGGGCCAGGCGGAGATCCTGTGCGCAAGA
 CCACCAAGGAGCGCTCGCGCTTACCACCTCCTGCGAAAGCTGGGCCGGGCCGGGGCGCTGGCCGGGT
 GGGCGGCGGGCCAGCGAGCGGGGGCCGCGGGAGGCACTGGCGGGGGGCCAGGCCGGTCAA
 GGCAAGATGCCCTGCCTCATCTGCATGAACCACCGCACCAACGAAAGCCTGAGCCTGCCCTTCAGTGCC
 AGGGCCGCTTCAGCACTCGCAGCCCGCTGGAGCTGCAGATGCAAGAGGGCGAGCACACGGTGCGCCCAT
 CATCGAGCGCGTGAGGCTGCCGGTGAACGTGCTGGTGCCAGCCGGCCGCGCGCAACCCCTACGACCTG
 CACCCGGTGGCGGAGGGTCAATTGCTACAAGCTGGTTAGCATCATCTCCAAGACGGTGGTGTGGGCTGG
 CGCTGCGCCGGAGGGCCCGCGCCGCTGCACTTCTGCTGTACCGACACGCCGCGCTTCGCGCTGCC
 GCAGGGCTGTGGCCGGGACCCGCGCGTGCAGCGCTGGTGGCGACAGCGCTCCTACTGCCGCGAG
 CGCTTCGACCCCGACGAGTACTCCACGGCCGTCGCGAGGCGCCAGCGGAGCTCGCCGAAGACTGCGCA
 GCCCGCGCGCGCGCCTCTGCCTGCCCGCGCGCGCCCGGGCTCGCCCGCGCCCGGGCCCGCT
 AGCGCCGGCTCCCGCCGGCGAGGGCGACCAAGAGTACGTGAGCCCGACTGGGCAGCCGCGCCGAGCC
 GCCGCGCGCCCGCGAGATCCCTACGAGGAGTTGTGGGCGCACAGGGGCCGAGGGCCTCGTCCGGC
 CGCCCCAGGGCTCGATCTCATCTCCTTCGGGGCCGCGGACCGCGCTCGGGAGCCGGAAGCGCCGCC
 GCCTCCAGTCCCTCCAAATCCGAGGCGGTGAAGGAGGAGTGCCGCTGCTCAATGCCCTCCAGTGCT
 CCCCGGGTGGCAATGGCAGCGCCGCTCTCCAGCAGCCCCCGGTTCCTCCTCGCTTCCCAAGCTGC
 AGCCGGTACATTCAGCTCCAGCTCTCCTACTACTCTCTGGCTCCAGGATGGGGCGGTTCGCG
 CAGTGGCAGTGGTCCCATCGCCGACACCTACTCCCTATTGCTACCCATGCACCTGGGAGACTGC
 AAGGTGGGCGAGTCTTAGCCGCCAGCCCCGGTCCCTACCCTCAACCACACAGCCAGCCAGGCT
 CCGGGCCCTCACAGAGCTCTGAGCGGTGAGCGCCTCCCTTCTGGGGCTGACACCCCTGTTAAGAC
 CTACCACAGCTGCCCTCCTTATTCAAGCCCTCATATCCCAAGAGCGCTTTGCTCCGTTGGAGCTCTC
 AACCTTTTTCCGGGCTGCCTACCCCTCAGGCCCTTACGCGCCTTGTCTTCTGGGCCAGAACCCT
 CGGGTCTGTGGCTACCTTGGCCCTGCGTATCCCGAGCCAGCCTCGCCAGGCCAGGCTATTACAGC
 TGCTCCCCCTCCTCTGCGCCCTCCTCCTCTTCTTGAATGGCAGGAACCAAGTCTGGAGCC
 TTCGATCCCTTGGAGTGGGCGAGGCGAGTCTCCAGAGCCTGAGCTGCTGCGTCTCAGGAGCCAGAG
 CAGTGGGACACCTGGCCTGGACCCGCTTACCACCTTGGCCCTCAAGGCCTTTGAGCTGAAG
 TTTGGTGTGCACCAAGTCCCCACCCACTGTACCAGCTGCTCTGAGGACCCGAGCGGGAGGAGCA
 CTTTTTCTAACCAAGGGCGCCTGGAAGGCCTCCTGCCAGTCCCGGGATGGAGCCACAGGCTTTGGAG
 TCCGAGATGCCTCCTCTGCGAGCCCTGCTGACCTGTCTGCACTCTCCTGGAGGAGTCTCTCGCAG
 TCTGCGTTTATCGGGCTCTCAGAGGATGTGGTGAAGTCTTTGCCCGAGAACGCATCGATGGTAGCATC
 TTTGTGACAGTCAAGGACATCCTGGCAGATGACTTCCACCTACCAAGCTGCAGGTCAAGAAGATCA
 TGCAGTTCATCAAGGCTGGAGGCCAAGATC

ACGCGTACGCGGCCGCTCGAGCAGAACTCATCTCAGAAGAGGATCTGGCAGCAATGATATCCTGGATT
 ACAAGGATGACGACGATAAGGTTTAA

Protein Sequence: >RC230553 representing NM_001168241
 Red=Cloning site Green=Tags(s)

MEKLAAGLAGLRWSMGAFPLDLIVSRCLPTLA CLGPGEYAEGVSE RDILLIHSCRQWTTVTAHTLEEGH
 YVIGPKIDIPLQYPGKFKLLEQARDVREPVR YFSSVEEVASVFPDRIFVMEAITFSVKVVSGEFSESEV
 YNFTLHAGDEL TLMGQAEILCAKTTKERSRFTLLRKLGRAGALAGVGGGPPASAGAAGGTGGGARPVK
 GKMPCLICMNHRTNESLSLPFQCQGRFSTRSPLELQMGEHEHTVRAIIERVRLPVNVLVPSRPPRNPYDL
 HPVREGHCYKLVSIISKTVVLGLALRREGPAPLHFLLLTDTPRFALPQGLLAGDPRVERLVRDSASYCRE
 RFDPDYEYSTAVREAPAELAEDCASP RRARLCLPAPRAPGLARAPGLAPAPAGEGDQEQYVSPDWA AAPEP
 AAPPAEIPYEELWAHQGPEGLVRPPPGLDLISFGAAGPPRREPEAPPPVPPKSEAVKKEECLLNAPPVP
 PRGGNGSRLSSPPVPPRPFKLQPVHSPSSSLSYSSGLQDGAGSRSGSGSPSPDYSLYCYPCTWGDC
 KVGESSRPAPGPLSTTQPSQASRALTEPLSGRAASLLGADTPVKTYHSCPPLFKPSHPQKRFAPFGAL
 NPFSGPAYSPGSAALSSGPRTTSGPVATSGPAYSPGPASPGQAYSAAPPSSCAPSSSSSEWQEPVLEP
 FDPFELGQSSPEPELLRSQEPRAVGTGPGPRLSPLGPSKAFEP EGLVLHQVPTPLSPAALQGPEAGGA
 LFLTQGRLEGPPASPRD GATGFGVRDASSWQPPADLSALSLEEVSRSLRF IGLSEDVVVFFARERIDGSI
 FVQLSEDILADDFHLTKLQVKKIMQFIKWRPKI

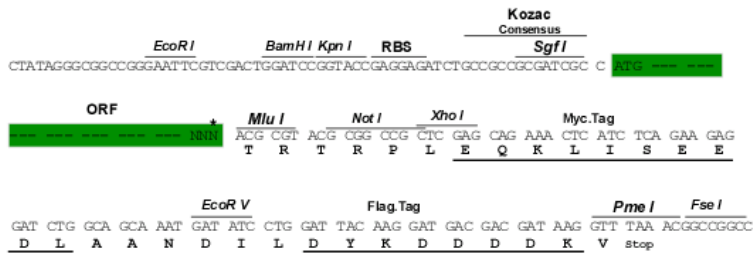
TRTRPLEQKLISEEDLAANDILDYKDDDDKV

Chromatograms: https://cdn.origene.com/chromatograms/mk8036_c11.zip

Restriction Sites: SgfI-MluI

Cloning Scheme:

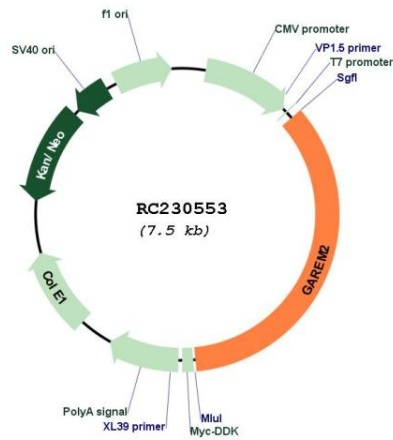
Cloning sites used for ORF Shuttling:



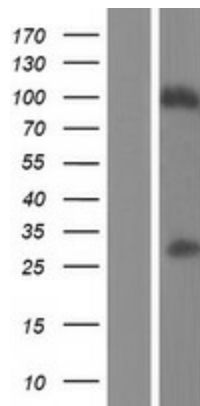
* The last codon before the Stop codon of the ORF

ACCN:	NM_001168241
ORF Size:	2622 bp
OTI Disclaimer:	The molecular sequence of this clone aligns with the gene accession number as a point of reference only. However, individual transcript sequences of the same gene can differ through naturally occurring variations (e.g. polymorphisms), each with its own valid existence. This clone is substantially in agreement with the reference, but a complete review of all prevailing variants is recommended prior to use. More info
OTI Annotation:	This clone was engineered to express the complete ORF with an expression tag. Expression varies depending on the nature of the gene.
Components:	The ORF clone is ion-exchange column purified and shipped in a 2D barcoded Matrix tube containing 10ug of transfection-ready, dried plasmid DNA (reconstitute with 100 ul of water).
Reconstitution Method:	<ol style="list-style-type: none">1. Centrifuge at 5,000xg for 5min.2. Carefully open the tube and add 100ul of sterile water to dissolve the DNA.3. Close the tube and incubate for 10 minutes at room temperature.4. Briefly vortex the tube and then do a quick spin (less than 5000xg) to concentrate the liquid at the bottom.5. Store the suspended plasmid at -20°C. The DNA is stable for at least one year from date of shipping when stored at -20°C.
RefSeq:	NM_001168241.2
RefSeq ORF:	2625 bp
Locus ID:	150946
UniProt ID:	Q75VX8
Cytogenetics:	2p23.3
MW:	93.3 kDa
Gene Summary:	Probable adapter protein that may provide a link between cell surface epidermal growth factor receptor and the MAPK/ERK signaling pathway.[UniProtKB/Swiss-Prot Function]

Product images:



Circular map for RC230553



Western blot validation of overexpression lysate (Cat# [LY433553]) using anti-DDK antibody (Cat# [TA50011-100]). Left: Cell lysates from untransfected HEK293T cells; Right: Cell lysates from HEK293T cells transfected with RC230553 using transfection reagent MegaTran 2.0 (Cat# [TT210002]).