

## Product datasheet for **RC230518**

### **CAGE1 (NM\_001170693) Human Tagged ORF Clone**

#### **Product data:**

Product Type:	Expression Plasmids
Product Name:	CAGE1 (NM_001170693) Human Tagged ORF Clone
Tag:	Myc-DDK
Symbol:	CAGE1
Synonyms:	bA69L16.7; CT3; CT95; CTAG3
Mammalian Cell Selection:	Neomycin
Vector:	pCMV6-Entry (PS100001)
E. coli Selection:	Kanamycin (25 ug/mL)



[View online »](#)

**ORF Nucleotide Sequence:**

>RC230518 representing NM\_001170693  
 Red=Cloning site Blue=ORF Green=Tags(s)

TTTTGTAATACGACTCACTATAGGGCGGCCGGAATTCGTGACTGGATCCGGTACCGAGGAGATCTGCC  
 GCC**CGGATCGCC**

ATGAACAAGGACTATCAAAAATTTGGTCATCACCTTCAGATCCTGTACATTTTGAAGTGGATACTTCTC  
 ATGAAAAAGTAGAAAGCATGTCAGAATCGGATACCATGAATGTCAGCAATCTTTCTCAAGGTGTAATGCT  
 TTCACATTCTCCAATCTGTATGGAACCACCGCACCACTTGTGACTTGCCTCAGAACGAAATAAAGAAT  
 TTTGAAAGGGAAAATGAGTATGAATCCACACTTTGTGAAGATGCTTATGGCACACTAGACAAATTTGTAA  
 ATGATAACAACATTGAAAATTACTCAACGAATGCCTAATTCAGCCAGTTGACACCATCAGCATATCTTC  
 CTTGAGACAAATTTGAAACCGTTTGCAAATTTCACTGGGTAGAAGCATTGATGATGAAATGACAGAGAAG  
 CCAGAATTTCAAAGTCAAGTGTATAATTATGCAAAAGACAACAATAAAGCAAGACTCATTTAAGGAAG  
 AAAATCCAATGGAACTAGTGTTCTGCAATACAGACCAACTTGGTAACGAGTATTTAGACAGCTCC  
 TCCTAGAAGCCCGCTCTAATCCACTGCAGTGGAGAGATGCTGAAATTTACAGAAAAGTCACTGGCTAAA  
 AGTATTGCCAAGGAATCTGCCCTCAACCTAGCCAACCTCCAAGTCTTATGTAAGACTGCAGTTCCTT  
 CAAAAGAAATACAGAATTATGGGGAGATTCTGAGATGTCAGTCAGTTATGAAAAGGAAGTCACAGCAGA  
 GGGTGTGGAGAGGCCAGAAATTTCTCAACTTGGTCTTCGGCAGGCATTTCTGGAGGAGTGAAGCATGT  
 CGGGAGAACTGTGAGATGCTGACTGGGAGCAAAGTGTGAAAGCTTACAACCTGTTCAAGAGGACATGG  
 CTTTAAATGAAGTCTTGCAAGAAATTAACATACTAACAGAAAGCAGGAAGTGCAGTCCAAAGAACTCCA  
 GTGTAGTAACCTGATTTAGAGAAGAGGGTTAAGAATACAGATGAAGATTACCAACAGCAAGTGTTT  
 ATTGATGTCATCAATAAGCTAAAGGAGAATGTTGAAGAATTAATTGAAGACAAATACAAAATAATCCTAG  
 AGAAGAAATGATACTAAAAGACATTTGCAAAATTTGGAAGAGTTTTAGCTAACACGCAAAAACATCTTCA  
 GGAATCCAGGAATGACAAGGAAATGTTACAGCTTCAATTTAAGAAGATCAAGGCTAATTATGTGTGTTTA  
 CAGGAAAGGTACATGACTGAAATGCAACAAAAATAAATCTGTAAGTCAGTATTTAGAGATGGACAAAA  
 CCTTAAGCAAGAAAGAAGAGGTAGAGAGACTACAACAACCAAAAAAGAACTGGAAAAGGCCACAGC  
 TTCTGCTTTGGACTTGTGAAACGGGAAAAAGAGGCCCAAGAACAAGAGTTCTTGTCTTTACAGGAGGAA  
 TTCCAGAACTTGAAGGAAAACCTGGAAGAAAGACAGAACTGAAATCTAGACTTGAGAAATGCTCA  
 CTCAAGTTAGAAATTTGCAATTTATGTCTGAAATGAAAGAACGAAGAATATAAACTTCAGCAGCAAT  
 CAACGAAGTAAAAATGAGAATGCAAACTTAAACAGCAGGTTGCAAGGAGTGAAGAGCAAAATTTATGTC  
 CCTAAATTTGAGACAGCTCAGTTAAAGGATCAATTAGAGGAAGTCTTGAAGTCAGATATTACCAAGGATA  
 CAAAAACGACACATTCTAATCTGCTCCCGGATTGCTCACCTTGTGAAGAGAGGCTGAATCCTGCAGATAT  
 AAAAAGAGCTTCTCAGCTGGCCTCCAAAATGCACAGTCTTCTGGCTCTGATGGTGGGACTTCTCACATGC  
 CAGGACATCATCAATTCTGATGCTGAACATTTCAAAGAGAGTGAGAAGGTTAGTGATATAATGCTGCAAA  
 AACTGAAGAGCTCCATCTTAAAAAGAAAACCTTATAGATAAAGAGCTACTGAAACATAAAGATAGAATCAC  
 AACCTTTAGAGAGTTAATTGCTAAGGAAAAAGCATTTCAGATCATGCTATTAAGGTCATAGACTGTGAT  
 TCAGATGAAGCCAAGAGTATCAGAGATGTACCTACCCTTCTGGGAGCCAACTGGATAAGTACCACAGTC  
 TAAATGAGGAGCTTGATTTCTGGTTACATCATATGAAGAAATCATTGAATGTGCTGACCAAAAGGCTTGC  
 AATATCCCACTCCAGATTGCACATTTGGAAGAGAGAAAATAACATTTAGAGATTTAATTAGAAAAGCCC  
 AGAGAAAAAGCCAGAAAACCAAGATCAAAAAGCTTAGAAAATCATCCGAAGTCCATGACCATGTTGGCAT  
 ATAACCTGTACATATTTATAGGATACAGGCTGGGCGGGTGGCTGACGCCTGTAATCCAGCACTTTGGG  
 AGGCCGAGGCGGGTGGATCACT

**ACGCGT**ACGCGGCCGCTCGAGCAGAACTCATCTCAGAAGAGGATCTGGCAGCAATGATATCCTGGATT  
 ACAAGGATGACGACGATAAGGTTTAA

**Protein Sequence:** >RC230518 representing NM\_001170693  
 Red=Cloning site Green=Tags(s)

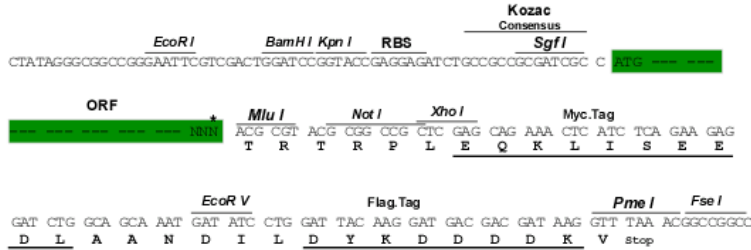
MNKDYQKFWSSPSDPVHFEVDTSHEKVESMSSEDTMNVSNLSQGVMLSHSPICMETTGTTCDLPQNEIKN  
 FERENEYESTLCEDAYGTLNLLNDNNIENYSTNALIQPVDTISISSLRQFETVCKFHWVEAFDDEMTEK  
 PEFQSQVYNYAKDNNIKQDSFKEENPMETSVSANTDQLGNEYFRQPPRSPPLIHCSGEMLKFTKSLAK  
 STAKESALNPSQPPSFLCKTAVPSKEIQNYGEIPEMSVSYEKEVTAEGVERPEIVSTWSSAGISWRSEAC  
 RENCEMPDWEQSAESLQPVQEDMALNEVLQKLKHTNRKQEVRIQELQCSNLYLEKRVKELQMKITKQVVF  
 IDVINKLKENVEELIEDKYKIIILEKNDTKKTLQNLEEVLANAQKHLQESRNDKEMLQLQFKKIKANYVCL  
 QERYMTEMQQKNKSVSYLEMDKTLKKKEEVERLQQLKKELEKATASALDLLKREKAEQEQEFLSLQEE  
 FQKLEKENLEERQKLKSRLEKLLTQVRNLQFMSENERTKNIKQQQINEVKNENAKLQQVARSEEQNYV  
 PKFETAQLKDQLEEVKSDITKDKTTHSNLLPDCSPCEERLNPADIKRASQLASKMHSLLALMVGLLTC  
 QDIINSDAEHFKESEKVSIMLQKLKSLHLKKKTLDKELLKHKDRITTFRELIKAEKAFQDHAIKVIDCD  
 SDEAKSIRDVPTLLGAKLDKYHSLNEELDFLVTSYEEIIECADQRLAISHSQIAHLEERNKHLLEDLIRKP  
 REKARKPRSKSLENHPKSMTMLAYNLYIFIGYRLGAVADACNPSTLGGRGGWIT

TRTRPLEQKLISEEDLAANDILDYKDDDDKV

**Restriction Sites:** Sgfl-MluI

**Cloning Scheme:**

Cloning sites used for ORF Shuttling:



\* The last codon before the Stop codon of the ORF

- ACCN:** NM\_001170693
- ORF Size:** 2472 bp
- OTI Disclaimer:** The molecular sequence of this clone aligns with the gene accession number as a point of reference only. However, individual transcript sequences of the same gene can differ through naturally occurring variations (e.g. polymorphisms), each with its own valid existence. This clone is substantially in agreement with the reference, but a complete review of all prevailing variants is recommended prior to use. [More info](#)
- OTI Annotation:** This clone was engineered to express the complete ORF with an expression tag. Expression varies depending on the nature of the gene.
- Components:** The ORF clone is ion-exchange column purified and shipped in a 2D barcoded Matrix tube containing 10ug of transfection-ready, dried plasmid DNA (reconstitute with 100 ul of water).

- Reconstitution Method:**
1. Centrifuge at 5,000xg for 5min.
  2. Carefully open the tube and add 100ul of sterile water to dissolve the DNA.
  3. Close the tube and incubate for 10 minutes at room temperature.
  4. Briefly vortex the tube and then do a quick spin (less than 5000xg) to concentrate the liquid at the bottom.
  5. Store the suspended plasmid at -20°C. The DNA is stable for at least one year from date of shipping when stored at -20°C.

**RefSeq:** [NM\\_001170693.2](#)

**RefSeq ORF:** 2475 bp

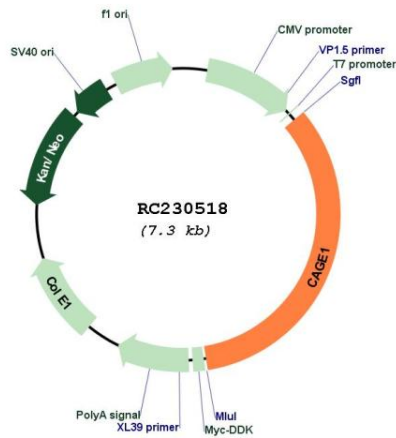
**Locus ID:** 285782

**UniProt ID:** [Q8TC20](#)

**Cytogenetics:** 6p24.3

**MW:** 95.9 kDa

**Product images:**



Circular map for RC230518