

## Product datasheet for **RC230517**

### **C1orf127 (NM\_001170754) Human Tagged ORF Clone**

#### **Product data:**

Product Type:	Expression Plasmids
Product Name:	C1orf127 (NM_001170754) Human Tagged ORF Clone
Tag:	Myc-DDK
Symbol:	C1orf127
Mammalian Cell Selection:	Neomycin
Vector:	pCMV6-Entry (PS100001)
E. coli Selection:	Kanamycin (25 ug/mL)



[View online »](#)

**ORF Nucleotide Sequence:**

>RC230517 representing NM\_001170754  
 Red=Cloning site Blue=ORF Green=Tags(s)

TTTTGTAATACGACTCACTATAGGGCGGCCGGAATTCGTCGACTGGATCCGGTACCGAGGAGATCTGCC  
 GCC**CGCATCGCC**

ATGTGGGGGTCCCAGCACTTGCCTGGGCCGTCTGGCTTGCCTGTGTTTCAGCCCACGGTGTCCCATGGA  
 GCCTCTCCTTCAGGTCAGACACGGACAAGCCAAGCTCTGCAGCAGAAGTTTTAAACAAGCATCTTCTTG  
 TTGGACAGACACAGTTGAGTGCTTCTCAGACTACATGACCCTGTGGATCCCAAGGAGCCAGTGGAGGGG  
 CTGAGGCGGTGGCTGGCCAGGACCTTGCCTTGCAGGCACCTGGAGGTCCCCTGACCACCTGGATTCTT  
 CTCTTGCTAAATGTGGCTACTTCTGCATCTGGCTTGCAGCGGTGACTTCTTTTTTCAGTTCAATACTC  
 GGCCTGCTTTGTGCAGAAAGAGAAAGCAAATTACAGGCTGGAAATCAGAATATTTAGAAAGGGGTGATG  
 GGGTTGGAGCGGAGTATCGCTACATAATGAAGTGTCCGATGCTAAGGTCAAGGCTGGGCCAGGAAAGCG  
 TCCACTGTGGGCCATGTTATCCAGGTCTCCCGCCCTGCCCTGTGGAGGGACAATAGACAGACTCC  
 ATGGCTGTGTCCCTTCAGGGGAGCTGGTGGCTTCTTGAAGACGCCAGCCTGATGGGACTGTATGTG  
 GACATGAATGCCACCACTGTACCCTCCAAAGCCCGAGACAAGGCTTCTTCAGAGGTGGGAGGTGCTGA  
 ACACCTCTGCTGAGCTCCTGCCACTATGGCTGGTGGAGCGGTACCATGCCTATTCTTTAGAAAGCTGCTTG  
 CCCACCGGTGTCATTCCAGCCAGAGTCGGAGGTCTTAGTTCACATCCCCAAGCAGAGACTGGGTCTAGTC  
 AAAAGAGGTTCTACATTGAGGAAACCTGAGCCTCAGATTCTCCGAGTCCACCAGTCCAACATCTTTA  
 TGGTGACTGAGAACAAAGGACTTTGTGGTGGTCAAGTTCAGGCTCCAGGTCAGCGATG  
 CCAAGAAGTCGGAGGAACCCCGGAACACAAGCTTTCTATAGGTTAGACTGAGCCTGGAATTTGCCGAG  
 ATGGCTGCCCGGTCTCTGGACAGTGGAGAGCTTCTTCCAGTGTGTGGGTTCAGGAACAGAGTCGCTG  
 CCTCAACTGCTGCCTGAGGACCACTCCCTCCCAACATCCCAAGGACCCAGAGACCCCTCCAGCGGAGT  
 GCCACCTGCTGCTTCTCCAGGTGTGGCTGCAGGACCACTGCCAGGAATGGCTTTCTCGGGACCTC  
 CTGCACCGGCTTCCGACGCACTGGCCAAAAAGGGCTTGGACATTCTGCAAACAGCCAAACCGGCGA  
 GAAGAGGCCAGACATCTGCCTCCATTCTCCCAGAGTGGTGAAGCTCAGCGAGGTCCCCAGCCTCCCC  
 AGGGGAAGCAGGGATCCCTGGACACCCACACCTCCAGCCACGCTCCCCTCGGAGCTGTAGAGGGTGT  
 CAGGCTAGTCCCTGGCGGCCACGTCCAGTCTTCCCAACGACCCGGCTCTGACCTGCCCGTGTCTCAG  
 ATGCCTCTCTCTTACCAGCCAGCCCGAGGCTGAACGACCTGAATCACTTCTGGTCTCAGGACCATC  
 TGTACCCTGACTGAAGGTCTAGAACTGTGAGGCTGAACAGGACCCCGCAAGTCTCCAGGAAGTCCC  
 CTCTGCTGAGAGCTTGTCAAGCGGGATGTGGCTGCACCTGAGCCCATCATGGGGAGCCCGGCCAAG  
 CCAGTGAGGAGTCCAGCCATTGGCGAGGCCCTGGCGGGCCACACTGGCTGCAGAGGAGCTGGTTTCTCA  
 CCGTTCTCCCGGAGAGCCCAAGAAACGTGCTCTGGAACGGAGGTGGAGAGGCCACGCCAGACAGGGCT  
 GGTCTCCCCAGGGAGGGGGCCAGGGGGCACATGGACCTTTCATCCTCAGAACCAAGCCAGGACATAGAGG  
 GGCCGGGACTCTCCATCTGCCAGCGAGGGATGCCACATCTCCACCCCAAGTGTGAGGCAGCCAGACCC  
 CAGTGCCTGGCTGAGTTCAGGACCTGAACCTACCGGGATGCCAGGGTGGAGGCTGGCAGCGCCCTGGCA  
 GTTCTTCTATGGAACCTCTGCCACCAGAACCTGTTCCGCCAGCAGCTTCTGACACCCGAAGCCTCAT  
 CTGTGGGAGGGCCAGACCAGCCCGATACCTGGAGTCAGCCCTGGCTGGCTGTGGGCCAGGAGGAGTG  
 GGGGTTGCACACAGTCCAGCCCTCCATCCACGCAAACCTGAGCCTGTGGGCTCCACAGGAGTGTG  
 CTACCCAGCCTGGTGGAGCTTGAATACCCCTTCCAGGCTGGCCGGGGGGCCTCACTCCAGCAGGAGCTGA  
 CAGAGCCACCTTGGCCCTCAGTGTGAAAGCCACAGGCTCCTGAGCTTCAAGACAGTGTGGAGGGCT  
 TTCTGAGAGGCCCTCACGC

**ACGCGT**ACGCGGCCGCTCGAGCAGAACTCATCTCAGAAGAGGATCTGGCAGCAAATGATATCTGGATT  
 ACAAGGATGACGACGATAAGGTTTAA

**Protein Sequence:** >RC230517 representing NM\_001170754  
Red=Cloning site Green=Tags(s)

MWGSPALAWAVWLACVQPTVFPWSLSFRSDTDKPSSAAEVLTEASSCWTDTVFCFSDYMTLWIPRSHVEG  
LRRWLARTLHLPGTWRSPDHLDSLAKCGYFLHLASDGDFLFRVQYSACFVQKEKANYRLEIRIFQKGV  
GLERSDRYIMKCPMLRSRLGQESVHCMPFIQVSRPLPLWRDNRQTPWLLSLRGELVASLEDASLMGLYV  
DMNATTVTVQSPRQGLLQRWEVLNTSAELLPLWLVSQGHAYSLEAACPPVSFQPESEVLVHHPKQRLGLV  
KRGSYIEETLSLRFRLRVHQSNI FMTENKDFVVSIPAAAGVLQVQRCQEVGGTQAFYRVDLSLEFAE  
MAAPVLWTVESFFQC VSGTESPASTAALRTTPSPPSPGPETPPAGVPPAASSQVWAAGPAAQEWLSRDL  
LHRPSDALAKKGLGPFLQTAKPARRGQTSASILPRVVQAQRGPQPPGEAGIPGHPTPPATLPSEPVEGV  
QASPWRPRPVLPTHPALTLPVSSDASSPSPAPRPERPESLLVSGPSVTLTEGLGTVRPEQDPAKSPGSP  
LLLRLSSGDVAAPEPIMGEPGQASEEFQPLARPWRATLAAEELVSHRSPGEPQETCSGTEVERPRQTGP  
GLPREGARGHMDLSSSEPSQDIEGPGLSILPARDATFSTPSVRQDPDPSAWLSSGPELTGMPRVRLAAPLA  
VLPMEPLPPEPVRPAALLTPEASSVGGPDQARYLESAPGWVPGQEEWVAHTSSPPSTQTLSLWAPTGV  
LPSLVELEYPFQAGRGASLQQLTEPTLALSAESHRPPELQDSVEGLSERPSR

TRTRPLEQKLI SEEDLAANDILDYKDDDDKV

**Chromatograms:** [https://cdn.origene.com/chromatograms/mk8036\\_e10.zip](https://cdn.origene.com/chromatograms/mk8036_e10.zip)

**Restriction Sites:** Sgfl-Mlul

**Cloning Scheme:**


**ACCN:** NM\_001170754

**ORF Size:** 2469 bp

**OTI Disclaimer:** The molecular sequence of this clone aligns with the gene accession number as a point of reference only. However, individual transcript sequences of the same gene can differ through naturally occurring variations (e.g. polymorphisms), each with its own valid existence. This clone is substantially in agreement with the reference, but a complete review of all prevailing variants is recommended prior to use. [More info](#)

**OTI Annotation:** This clone was engineered to express the complete ORF with an expression tag. Expression varies depending on the nature of the gene.

**Components:** The ORF clone is ion-exchange column purified and shipped in a 2D barcoded Matrix tube containing 10ug of transfection-ready, dried plasmid DNA (reconstitute with 100 ul of water).

- Reconstitution Method:**
1. Centrifuge at 5,000xg for 5min.
  2. Carefully open the tube and add 100ul of sterile water to dissolve the DNA.
  3. Close the tube and incubate for 10 minutes at room temperature.
  4. Briefly vortex the tube and then do a quick spin (less than 5000xg) to concentrate the liquid at the bottom.
  5. Store the suspended plasmid at -20°C. The DNA is stable for at least one year from date of shipping when stored at -20°C.

**RefSeq:** [NM\\_001170754.1](#), [NP\\_001164225.1](#)

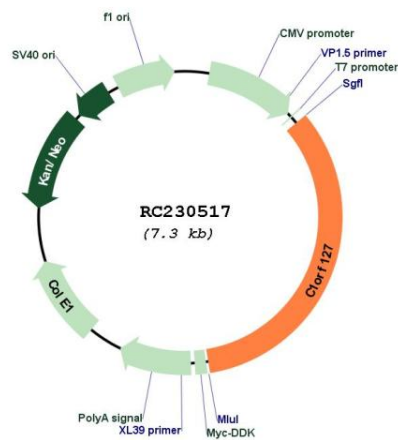
**RefSeq ORF:** 2472 bp

**Locus ID:** 148345

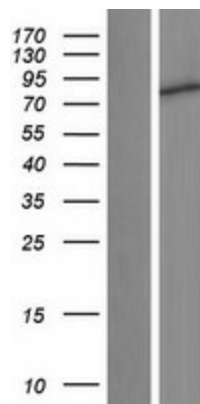
**Cytogenetics:** 1p36.22

**MW:** 89.5 kDa

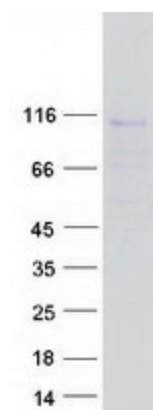
**Product images:**



Circular map for RC230517



Western blot validation of overexpression lysate (Cat# [LY433517]) using anti-DDK antibody (Cat# [TA50011-100]). Left: Cell lysates from untransfected HEK293T cells; Right: Cell lysates from HEK293T cells transfected with RC230517 using transfection reagent MegaTran 2.0 (Cat# [TT210002]).



Coomassie blue staining of purified C1orf127 protein (Cat# [TP330517]). The protein was produced from HEK293T cells transfected with C1orf127 cDNA clone (Cat# RC230517) using MegaTran 2.0 (Cat# [TT210002]).