

Product datasheet for **RC230509**

GPR156 (NM_001168271) Human Tagged ORF Clone

Product data:

Product Type:	Expression Plasmids
Product Name:	GPR156 (NM_001168271) Human Tagged ORF Clone
Tag:	Myc-DDK
Symbol:	GPR156
Synonyms:	GABABL; PGR28
Mammalian Cell Selection:	Neomycin
Vector:	pCMV6-Entry (PS100001)
E. coli Selection:	Kanamycin (25 ug/mL)



[View online »](#)

ORF Nucleotide
Sequence:

>RC230509 representing NM_001168271
 Red=Cloning site Blue=ORF Green=Tags(s)

TTTTGTAATACGACTCACTATAGGGCGGCCGGGAATTCGTCGACTGGATCCGGTACCGAGGAGATCTGCC
 GCC**CGGATCGCC**

ATGGAGCCTGAAATAAAGTCTGTAATTGTGTGACAGTTTCTGGCCAGGAGCTGGATCGGAGACCCC
 TTCATGATCTCTGCAAGACAACAATTACATCTTCCACCACAGCAGTAAGACCATCTCTTATTATCTCC
 TGTCTCTTGGGTATTGTTTGGACTTTTCTCAGCTGTGGACTTCTGCTGATACTTTTCTTCTTGCCTTT
 ACAATTCAGTGCAGGAAGAAGCAGGATTGTGAAGATGTCCAGTCCCAATCTGAACATTGTGACCTTACTGG
 GCAGTTGTCTCACTTACAGTAGCGCTTACCTCTTTGGGATTAGGATGTTTTAGTGGGGAGCTCAATGGA
 AACTCTCATTAGACAAGACTGTCCATGCTGTGCATTGGGACCTCCCTTGTGTTGGCCCCATTCTGGGA
 AAGAGCTGGCGACTCTACAAGGTGTTACCCAAAGGGTCCCGACAAGAGAGTGATTATCAAAGACCTGC
 AGTTGCTGGGGTGGTGGCAGCCCTGTTGATGGCTGATGTGATCCTGCTCATGACGTGGGTGCTGACTGA
 TCCCATCCAGTGCCTCCAGATTCTCAGTGTGACAGGGAAAGACGTGCTCCTGCACTTCGACCAGCACCCAC
 TTCTGTGCTTCCCGGATTCCGATGTTGGATTGCTCTCATTGGGGATGCAAGGGTCTGCTCCTGCTGT
 ATGGTGCCTACCTGGCTGGCCTGACTGGCCATGTGAGCTCCCCTCCTGTGAATCAGTCCCTAACCATCAT
 GGTGGGGTCAACCTCCTTGTACTGGCTGCTGGGCTGCTTTTGTAGTACCAGATACTTGCACTTCTGG
 CCCAACCTGGTCTTTGGACTCACATCTGGAGGGATCTTTGTTGTACAATAAATCAACTGCTTCACT
 TCATTCAGCTGAAGCAATGGAAGGCATTTGAAGAGGAAAACCAACAATCAGACGCATGGCCAAATA
 TTTAGCACTCCCAACAAAAGCTTCCATACCCAGTATGGTGAGGAGGAGAACTGCCACCCGAGGGGAGAG
 AAAAGCTCCATGGAGAGGCTCCTCACAGAAAAAATGCTGTGATTGAAAGCCTGCAGGAACAAGTAACA
 ACGCCAAAGAGAAGATTGTGAGGCTGATGTGACGTGAGTGCACCTATGACCTCCAGAGGGGGCTGCCCC
 ACCTGCCTCTTCCCGAACAAGGAGCTCCAGCGGTAGCCTCGGTCCACACCCTGGCAGCTGCTCAGGGG
 CCTTCGGGTACCTCTCTGACTTTCAGAATGATCCTGGCATGGCTGCCCGGGATTCCAGTGCACCTCAG
 GGCCCTCCTCATATGCACAAAGCCTTGAGGGGCCTGGGAAGGACTCCAGCTTCTCCCGAGGAAGGAGGA
 GAAGATATCTGACTCAAAAGACTTTTCTGATCATTAGACTCAGGTTGTAGCCAGAAGCCATGGACTGAG
 CAAAGCCTGGGTCCAGAAAGAGGAGACCAAGTCCCATGAACCCAGCCAGAGTCTCCTACCAGAAAGAG
 GCGGCTCAGATCCCAGAGACAGAGGCATCTGGAGAACTCAGAGGAGCCCCAGAGCGGCGGTACGGGT
 TAGTTCAGTAATCAGGGAGAACTTCAAGAGTCTTACAAGATCTGGGCCTGGGCCCTGAGGCTTCCCTC
 TCCACCGCCCCCTTGTGATCAGCAAACTGGAAGAAGAGTGTGCTTCCAGCCCCAAAAGATGCCCC
 TCTCCAAGGAGCTCGGCTTAGCCCTTACATGGTGAGGAGAAGGCGGGCAGCTCAGCGGGCCCGCTCACA
 CTTTCTGGCTCTGCACCTCATCTGTGGGCATCGGGCAACAGGACTGTTCTGGGGCACACAGCAGG
 CTACATGTGCAGAATGGGGACAGCCCCAGCCTGGCCCCACAACTACTGATTCCAGAGTACGAAGACCTT
 CTTCCAGGAAGCCTTCACTACCTCAGATCCTCAAGACAGACCAGGTACCCTGGAGGGCAGCAAACAAAG
 CCAGACAGAGCCCCGAGGGGGCTAGAGGGAGCAAAGCAGCCTTCTTCCGACGCTTCTGGTTCTGGCCGG
 GCCCAAGTCTGCTGCCCATGCCTCTCAAAGCCTCACCTGACTTGCCTGAACAGTGGCAGCTGTGGC
 CCCCAGTGCCTCAGGCTGTGCCTCCCTGTCTTCTCAACACAGCTATTTGATACTGAGTCCAGCAGCTC
 AGATGAGTTCTTCTGCCGCTGCCACCGCCCTACTGTGAAATCTGCTTCCAGAGCTTCTGACTTAGT
 GACAGTGGCACATCAGACACTGACCCTGAGCCTACTGGGGGCTGGCTTCTGGGAAAAGCTGTGGGCC
 GCTCCAAGCCTATTGTGAACTTCAAAGATGACTTCAAACCCACGCTGGTG

ACGCGTACGCGGCCGCTCGAGCAGAACTCATCTCAGAAGAGGATCTGGCAGCAAATGATATCCTGGATT
 ACAAGGATGACGACGATAAGGTTTAA

Protein Sequence: >RC230509 representing NM_001168271
 Red=Cloning site Green=Tags(s)

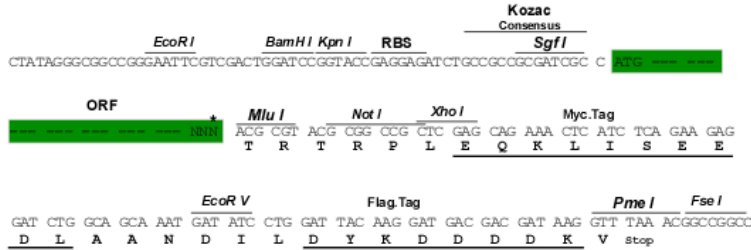
```
MEPEINCSELCDSPFGQELDRRPLHDLCKTTITSSHSSKTISSLSPLVLLGIVWTFVLSGRLLLILFFLAF
TIHCRKNRIVKMSSPNLNIVTLGSLTYSSAYLFGIQDVLVGSSEMETLIQTRLSMLCIGTSLVFGPILG
KSWRLYKVFVTPQKRVIIKDLQLLGLVAALLMADVILLMTWVLTDPVQCLQILSVTGKDVSTSTSTH
FCASRYSDVWIALIWGCKGLLLLYGAYLAGLTGHVSSPPVNSQLTIMVGVNLLVLAAGLLFVVTRYLHSW
PNLVFGLTSGGIFVCTTTINCFIFIPQLKQWKAFAEEENQTIIRMAKYFSTPNKSFHTQYGEENCHPRGE
KSSMERLLTEKNAVIESLQEQVNNAKEKIVRLMSAECTYDLPEGAAPPASSPNKDVQAVASVHTLAAAQG
PSGHLSDFQNDPGMAARDSQCTSGPSSYAQSLEGPVKDSSSPGKKEEKISDSKDFSDHLDGCSQKQWTE
QSLGPERGDQVPMNPSQSLLPERGGSDPQRQRHLENSEPPERRSRVSSVIREKLQEVLDLGLGPEASL
STAPSCHQQTWKNNSAAFSPQKMPKSKELGFSYPMVRRRRRAAQRARSHFPGSAPSSVGHANRTPVGAHSR
LHVQNGDPSLAPQTTDSRVRRPSSRKPSLSDPQDRPGTLEGSKQSQTEPEGARGSKAAFLRQPSGSGR
APSPAAPCLSKASPDLPQWQLWPPVPSGCASLSSQHSYFDTESSSSDEFFCRCHRPYCEICFQSSSDSS
DSGTSDDTPEPTGGLASWEKLVARSKPIVNFKDDLKPTLV
```

TRTRPLEQKLISEEDLAANDILDYKDDDDKV

Restriction Sites: Sgfl-MluI

Cloning Scheme:

Cloning sites used for ORF Shuttling:



* The last codon before the Stop codon of the ORF

ACCN: NM_001168271

ORF Size: 2430 bp

OTI Disclaimer: The molecular sequence of this clone aligns with the gene accession number as a point of reference only. However, individual transcript sequences of the same gene can differ through naturally occurring variations (e.g. polymorphisms), each with its own valid existence. This clone is substantially in agreement with the reference, but a complete review of all prevailing variants is recommended prior to use. [More info](#)

OTI Annotation: This clone was engineered to express the complete ORF with an expression tag. Expression varies depending on the nature of the gene.

Components: The ORF clone is ion-exchange column purified and shipped in a 2D barcoded Matrix tube containing 10ug of transfection-ready, dried plasmid DNA (reconstitute with 100 ul of water).

Reconstitution Method:

1. Centrifuge at 5,000xg for 5min.
2. Carefully open the tube and add 100ul of sterile water to dissolve the DNA.
3. Close the tube and incubate for 10 minutes at room temperature.
4. Briefly vortex the tube and then do a quick spin (less than 5000xg) to concentrate the liquid at the bottom.
5. Store the suspended plasmid at -20°C. The DNA is stable for at least one year from date of shipping when stored at -20°C.

RefSeq: [NM_001168271.2](#)

RefSeq ORF: 2433 bp

Locus ID: 165829

UniProt ID: [Q8NFN8](#)

Cytogenetics: 3q13.33

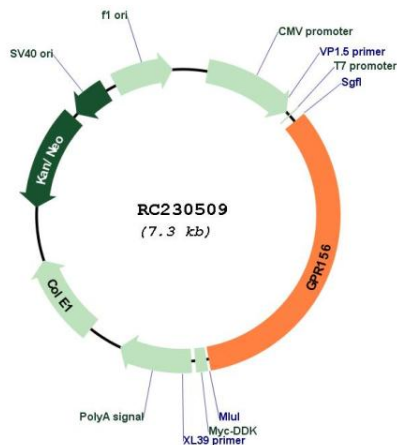
Protein Families: Druggable Genome, Transmembrane

Protein Pathways: Neuroactive ligand-receptor interaction

MW: 89.1 kDa

Gene Summary: G protein-coupled receptors (GPCRs) are a large superfamily of cell surface receptors characterized by 7 helical transmembrane domains, together with N-terminal extracellular and C-terminal intracellular domains.[supplied by OMIM, Mar 2008]

Product images:



Circular map for RC230509