

## Product datasheet for **RC230487**

### MAP7D2 (NM\_001168465) Human Tagged ORF Clone

#### Product data:

Product Type:	Expression Plasmids
Product Name:	MAP7D2 (NM_001168465) Human Tagged ORF Clone
Tag:	Myc-DDK
Symbol:	MAP7D2
Mammalian Cell Selection:	Neomycin
Vector:	pCMV6-Entry (PS100001)
E. coli Selection:	Kanamycin (25 ug/mL)



[View online »](#)

**ORF Nucleotide Sequence:**

>RC230487 representing NM\_001168465  
 Red=Cloning site Blue=ORF Green=Tags(s)

TTTTGTAATACGACTCACTATAGGGCGGCCGGAATTCGTCGACTGGATCCGGTACCGAGGAGATCTGCC  
 GCC**CGGATCGCC**

ATGGAGCGCGGCCGGCGGCTCCGGGACGGGATCCCGCCTGAGGGACTGCGCGGGAACTCTCTCC  
 CAGGGAAGATCGCAGAACCAGGGCGGGTCCGGACTCTCAGCCAACTACCGCCTCAAGGCATGGAGGG  
 ATTTTTGAAATCAGATGAGAGGCAGAGATTGGCCAAAGAAAGACGAGAAGAAAGAAAAATGTCTGGCT  
 GCTCGGGAGCAACAGATCCTGGAGAAACAGAAAAGAGCCAGGCTGCAGTACGAAAAGCAAATGGAGGAGC  
 GATGGCGAAAACCTGGAAGAGCAGCGGCAGCGGGAGGACAAAAGAGAGCTGCTGTGAAGAGAAAAGGAA  
 ACAGAAGCTCCGGGAGGAGGAGGAACGGCTGGAGGCGATGATGCGCCGGTCCCTGGAGCGCACACAGCAG  
 CTGGAGCTGAAAAAGAAGTATTCGTGGGAGCACCCTGGCCATTGGACCCGGAGGACATGATGCATGTG  
 ACAAACCTTCAACATCAACTATGAGTTTGCCAAAGCCAACGGAGCCTCCCATGAATAAACGCTGTCTTC  
 ATCCACCGTGGCAATATCCTATTCAGACCGAGCTCATCACATGCACCTTAGTCCAATGGAAGCCATT  
 CTTGTTTCGCGACTGTTGACACCCACACAGTCTTCTTTAGCCAGAAGCAGAGCTTCAGTCAATGCTCTCTG  
 GGCAGGCCAATGATTCAGTATTCATGTCTGTCCTCGTTAGCTCCTCTTGGCCCTTAAACCTTCTTA  
 CAAGTCTTCACCACTCGAAACATTGAGAAGAAGAAAGCTACATCTACGTCTACATCTGGTGCAGGAGAT  
 GTTGGGAAAGAAGCCCTTTCAGGAGGAGAGGCCTCTGTTGGAGAAGGTGAAGCGGGGGCAACGAACAG  
 CAACTTCTCTTCTGTTGTGAACCTCGGGTCCCCTCTGAGAAGATGTGAGTTTTCTGGAGGCATTCTAA  
 GAGACCATCTTCTCTGTGATATCCAAGACAGCTACTAAAGCTTATCCACAGTCTCCAAAGACAACGAAA  
 CCTCCCTACCCAGGTCTCCTGTGAAGTACCGCTTACCTGCCCTTCTGGCCAAGACATGCCAAGAGGA  
 AAGCGGAGAAAGAGAAGACAACAAGGAAAGGAAAGTACCTTGGCTCAGCAGGCTGCTGGCCCGCAAGG  
 AGAGGAAGCCCTAGAGAAGCATGTAGTGGACAAGCATGCCAGCGAGAAGCATGCTGCTGCCGAGGAGGG  
 AAAGCCGAAAACAGCGCAGCCTTGGGAAAGCCACAGCAGGCACCACTGATGCAGGAGAGGCTGCGAAGA  
 TCTTGGCTGAAAAGAGAAGACAGGCCCGCTGCAGAAGGAACAGGAGGAGCAAGAACGACTGGAGAAGGA  
 AGAACAAGATAGGCTGGAGAGAGAGGAATTGAAAAGAAAGGCAGAGGAGGAAAGGCTTCGCTAGAAGAG  
 GAAGCCCGAAAAGCAGGAAGAAGAAAGGAAGCGGCAGGAAGAGGAAAAGAAAAACAGGAAGGGGAAGAGA  
 AAAGAAAGGCAGGCGAGGAGGCCAAGCGGAAGGCTGAGGAGGAGCTGTTGTTGAAAAGAAAAGCAAGAACA  
 AGAAAAACAAGAGAAAGCCATGATTGAAAAGCAGAAAGAAGCAGCAGAAACAAGCCCGGAGGTAGCT  
 GAACAGATGCGTCTCGAGAGAGAACAGATTATGCTGCAGATTGAGCAGGAGAGACTGGAGAGAAAGAAGA  
 GAATAGATGAAATCATGAAGAGAACAAGGAAAAGTGTGTGTCTCCACAAGTGAAGAAAGAAGACCCCAA  
 AGTGGGGTCCAGCCTGCTGTGTGTGTGAAAAGAAAGACAAAACCTGGTTGTCCCAACAAAATGGAATC  
 AATGGATTGAACACCTGCCAGGAAGTAAATGGTGTGGATCACGCTGCCCCAGAACTTATCCCAAGACA  
 TTTTCTCTAATGGGCTTAAGCCAGCTGGGGACTCATTCACTGGATGCCCTTGTGGGAAATCAATAG  
 CCTGGATGATTCAACTGAAGAAGTTCAGTCTATGGATGTGAGTCTGTTTCAAAGAAAGAGCTTATCTCT  
 ATCCCGGAATTTTACCAGTGAGTGAATGATTCTGGGGTGTCTCTGGACCAAAATGGAAGTGGTAATG  
 CCCGAGCACTTCAAGATCTTTAGATTTCACTGGTCCCCGACATTCCCAAGAGATCCAGTGAATCT  
 CAGCCTGGACGACTGTAACAAAAACCTTATCGAAGGATTTAACAGTCTGGCCAAGAACTCCTCTCAAC  
 ACCTTCTGT

**ACGCGT**ACGCGGCCGCTCGAGCAGAACTCATCTCAGAAGAGGATCTGGCAGCAAATGATATCCTGGATT  
 ACAAGGATGACGACGATAAGGTTTAA

Protein Sequence: >RC230487 representing NM\_001168465  
 Red=Cloning site Green=Tags(s)

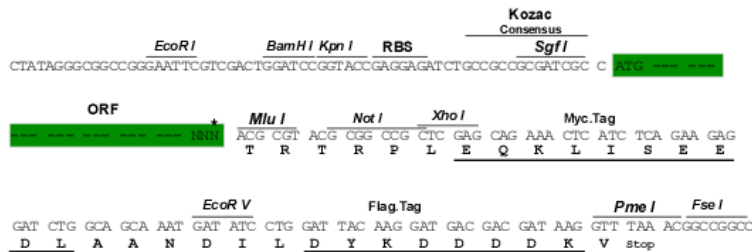
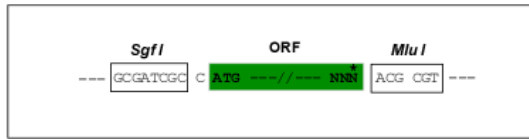
MERGGGGSGTGSRPEGTARGTSLPGKIAEPGAVRTSQPNYRPGMEGFLKSDERQLAKERREEREKCLA  
 AREQQILEKQKRARLQYEKQMEERWRKLEEQRQREDQKRAAVEEKRKQKLREEEERLEAMRRSLERTQQ  
 LELKKKYSWGAPLAIGPGGHADCDKLISTSTMSLPKPTEPPMNKRLSSSTVAISYSPDRAHHMHLSPMEAI  
 LVSRLLTPTQSSSLARSASVMLSGQANDSVFHVCPRLAPLGPLNPSYKSSPTRNIEKKKATSTSTSGAGD  
 VGKEALSGGEASLVEKVKRGQRTATSLPVVNFVGSPLRRCEFSGGIPKRPSSPVI SKTATKAYPQSPKTTK  
 PPYPGSPVKYRPLALSGQDMPKRKAKEKSNKEREGLAQQAAGPQGEEALEKHVVDPKHASEKHAAAAGG  
 KAENSAALGKPTAGTTDAGEAAKILA EKRRQARLQKEQEEQERLEKEEQDRLEREELKRKAEERLRLEE  
 EARKQEEERKRQEEKKQEGEEKRKAGEEAKRKAEEELLLKEKQEQEKQEKAMIEKQKAAETKAREVA  
 EQMRLEREQIMLQIEQERLERKKRIDEIMKRTRKSDVSPQVKKEDPKVGVQPAVCVEKTKLVVFNKMEI  
 NGLNTCQEVNGVDHAAPETYPQDIFSNGLKPAGGLIHLDALDGKSNLDDSTEEVQSMQVSPVSKHEELIS  
 IPEFSPVSEMIPGVSLDQNGTGNARALQDLLDFGPPTFPKRSSENLSDDCNKNLIEGFNSPGQETPLN  
 TFC

TRTRPLEQKLISEEDLAANDILDYKDDDDKV

Restriction Sites: SgfI-MluI

Cloning Scheme:

Cloning sites used for ORF Shutting:



\* The last codon before the Stop codon of the ORF

ACCN: NM\_001168465

ORF Size: 2319 bp

**OTI Disclaimer:** Due to the inherent nature of this plasmid, standard methods to replicate additional amounts of DNA in E. coli are highly likely to result in mutations and/or rearrangements. Therefore, OriGene does not guarantee the capability to replicate this plasmid DNA. Additional amounts of DNA can be purchased from OriGene with batch-specific, full-sequence verification at a reduced cost. Please contact our customer care team at [custsupport@origene.com](mailto:custsupport@origene.com) or by calling 301.340.3188 option 3 for pricing and delivery.

The molecular sequence of this clone aligns with the gene accession number as a point of reference only. However, individual transcript sequences of the same gene can differ through naturally occurring variations (e.g. polymorphisms), each with its own valid existence. This clone is substantially in agreement with the reference, but a complete review of all prevailing variants is recommended prior to use. [More info](#)

**OTI Annotation:** This clone was engineered to express the complete ORF with an expression tag. Expression varies depending on the nature of the gene.

**Components:** The ORF clone is ion-exchange column purified and shipped in a 2D barcoded Matrix tube containing 10ug of transfection-ready, dried plasmid DNA (reconstitute with 100 ul of water).

**Reconstitution Method:**

1. Centrifuge at 5,000xg for 5min.
2. Carefully open the tube and add 100ul of sterile water to dissolve the DNA.
3. Close the tube and incubate for 10 minutes at room temperature.
4. Briefly vortex the tube and then do a quick spin (less than 5000xg) to concentrate the liquid at the bottom.
5. Store the suspended plasmid at -20°C. The DNA is stable for at least one year from date of shipping when stored at -20°C.

**RefSeq:** [NM\\_001168465.2](#)

**RefSeq ORF:** 2322 bp

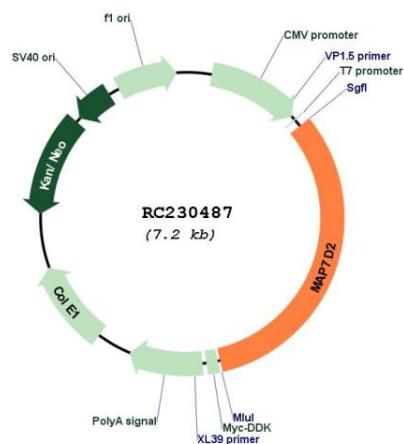
**Locus ID:** 256714

**UniProt ID:** [Q96T17](#)

**Cytogenetics:** Xp22.12

**MW:** 86.8 kDa

Product images:



Circular map for RC230487