

Product datasheet for **RC230472**

NUTM2G (NM_001170741) Human Tagged ORF Clone

Product data:

Product Type:	Expression Plasmids
Product Name:	NUTM2G (NM_001170741) Human Tagged ORF Clone
Tag:	Myc-DDK
Symbol:	NUTM2G
Synonyms:	FAM22G; NUTMG
Mammalian Cell Selection:	Neomycin
Vector:	pCMV6-Entry (PS100001)
E. coli Selection:	Kanamycin (25 ug/mL)



[View online »](#)

ORF Nucleotide
Sequence:

>RC230472 representing NM_001170741
 Red=Cloning site Blue=ORF Green=Tags(s)

TTTTGTAATACGACTCACTATAGGGCGGCCGGGAATTCGTCGACTGGATCCGGTACCGAGGAGATCTGCC
 GCCGCGATCGCC

ATGGCTTCAAATGGAGCATAACCCAGTGTCTGGGACCCGGCGTGACCGTGAACCCTGGCACCTCCCTGTCTG
 TGTTACGGCTCTGCCCTTTGCCACACCCTCTCCCGGCCAACACACAGGCCGCCCTCGTGACTGCAGT
 GGTTCTCCAGCCGCCCTCTGGTGTCTCTGCCTTCCCAGCACCCCTCTAGTGGCAGGACAGGATGGC
 CGCGGCCCAAGTGGGGCTGGGGCTTCCAACGTCTTTGTCCAGATGAGGACAGAAGTGGGGCTGTGAAGC
 CCCCTCAGGCACAGACCTTGATCCTAACTCAGGCCCCCTCGTCTGGCAGGCTCCAGGCACCCTCTGTGG
 AGGTGTATGTGTCCACCTCCCCTACTCCTGGCAGCTGCTCTGGGGTGGCCGTTACCTCTGCCAGGTG
 GTTGGGGGCACCCAGGCCTGTGAGGGAGGCTGGTCCCATGGCCTTCTCTCCACCACCACCACCGGCTG
 CCCAGGTGGCCCCATCGTGTCCCAGGGAACGCTGGGCCATGGCCACAAGGGGCTCATGGAGAGGGCAG
 CCTGGCTCCCTCCAGGCCAAGGCCCGGCCGGACGACTCCTGTAACCCAAGAGTGTCTATGAGAACTTC
 CGACTCTGGCAGCACTACAAGCCCTGGCCCGGAGGCACCTTCCCAGAGTCTGACACTGAAGCGCTTT
 CCTGCTTCTCATCCCAGTTCTCCGATCCCTGGCCCGGCCGAAGCCCACCATGACGCTGGAGGAGGGACT
 GTGGCGGGCCATGCGGGAATGGCAGCACACGAGCAACTTTGACCGGATGATTTTCTACGAGATGGCGGCA
 AAGTTCCTGGAGTTTGGAGCTGAGGAGGAGATGCAGATTCAGAAATCGCAGTGGATGAAGGGGCCCCAGA
 GCCTGCCTCCTCCAGCCCCGCGGAGGCTTGAACCTCGAGGACCCCTGCCCTGAGGTGGTCAAGCAGCC
 AGTGTACCTTCCAGCAAGGATGGCCCCAAGGCCCGACTGCCTGCCTGCCACCACCAGGCCCCAGAGG
 CCAGCGGAGACCAAGGCCACCTGCCACCACCAGGCCCCGAGGCCAGCAGAGACCAAGTCCCTGAGG
 AGATCCCCCTGAAGTGGTGCAGGAGTATGTGGACATCATGGAGGAGCTGCTGGGGTCTCACCTGGGGA
 CACAGGGGAGCCTGAGGGACAACGGGAAAAGGGCAAAGTGGAGCAGCCGAGGAAGAGGACGGGATGACC
 TCAGACCCGGCCCTCCTGAGCTACATTGACAAGCTGTGTTCCAGGAAGACTTTGTACCAAGGTGGAGG
 CCGTCATTACCCCCGATTCTGGAAGAATTGCTTTCCCAGATCCACAGATGGATTTCTTGGCCCTAAG
 CCAGGAGCTGGAGCAGGAGGAAGGACTCACCTTGCCAGCTAGTGGAGAAGCGCCTCCTGTCTTGAAG
 GAGAAAGGGTGCGGGAGGGCAGCCCTCGACATGGCACGGCCAGGTTGGACTCAAGTCTTCTGAGTTT
 CAGCTGGCCAAGAAGCAGCGAGAGAGTCCCTGACCCCAACAAAGGGTCAGCGTGGAACCTCCCCACC
 CCAGACGGCTGCCAGGACCCTCAGGGACAGGGCAGAGTGGCAGTGGCCAGGTCGAAGACCCCT
 GCTGTGCTTTTGGGATGTCAGGACTCCCCAGGCTGAAGGCTGTCCGGCCAACTCTCCTCCCCAGGACC
 ACAGACCCACCTGCCCGGCCTGGGGACCAAGGACGCCTTGGGTCTCCCTGGAGAGTCTCCTGTCAAGGA
 GTCACATGGGCTGGCTAAGGGTCAAGTGAAGGACGGAACCTCCCTGGCATGGTCTATGTGCTGGTTCC
 CACCACAGGCTGAGGCCCTGGAGGCTGTCCCAGAGCCCTGTCCCTTCTCGGGCCTTCTCAGCCCAGGAG
 GGAGAGGACCCAGGGAGCTCTTCAATCTCATCTGCTCAGAAAAGAGGCCTCAGCCATCACCTTCTCC
 TGCCAGCAAGTCCAAGAAGCGACCTCTCTTTGGAAGCCATCCCCTGCTGAAAAGACACCCGACCCAGGG
 CCTGGGCTCAGGGTCTCTGGGGAGCAATCCCTGGCTTGGGGCTGGGTGGCCCTCACAGTCTCAAAGA
 GAAAGGGTGACCCCTTGGCTCCAGGAGGAAGAAGAAGCGGCATTGTAGCCAG

ACGCGTACGCGGCCGCTCGAGCAGAACTCATCTCAGAAGAGGATCTGGCAGCAAATGATATCCTGGATT
 ACAAGGATGACGACGATAAGGTTTAA

Protein Sequence: >RC230472 representing NM_001170741
Red=Cloning site Green=Tags(s)

MASNGAYPVLGPGVTVNPGLTSLVFTALPFATPSGPTHRPPLVTAVVPPAGPLVLSAFPSTPLVAGQDG
 RGPSPGAGASNVFVQMRTEVGPVKPPQAQTLILTQAPLWVQAPGTLCCGVMCPPLLLLAAAPGVPVTSQV
 VGGTQACEGGWSHGLPLPPPPAAQVAPIVSPGNAGPWPQGAHGEGLAPSQAKARPDDSCPKSVYENF
 RLWQHYKPLARRHLPQSPDTEALSCFLIPVLRSLARRKPTMTLEEGLWRAMREWQHTSNFDRMIFYEMAA
 KFLEFEAEEMQIQKSQWMKGPQSLPPPAPRLEPRGPPAPEVVKQPVYLPKSDGPKAPTAACLPPPRPQR
 PAETKAHLPPPRPPRAETKVPEEIPPEVVQEYVDIMEELLGSHPGDTGEPEGQREKKGVEQPQEEDGMT
 SDPGLLSYIDKLCSEQEDFVTKVEAVIHPRFLEELLSPDPQMDFLALSQELEQEEGLTLAQLVEKRLLSLK
 EKGCGRAPRHGTARLDSSPSEFAAGQEAAREVPDPQQRVSVETSPPQTAADPQQGGRVRTGMARSED
 AVLLGCQDSPRLKAVRPTSPPQDHRPTCPGLGTDALGLPGESPVKESHGLAKGSSEETELPGMVVYVGS
 HHRLRPWRLSQSPVPSSGLLSPGGRGPQALQSPSAQKRGLSPSPSPASKSKRPLFGSPSPAETKPHPG
 PGLRVSGEQSLAWGLGGPSQSKRKGDPASRRKKKRHCSQ

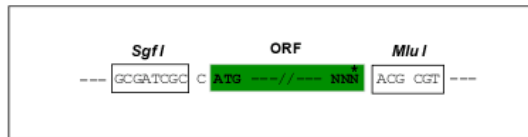
TRTRPLEQKLISEEDLAANDILDYKDDDDKV

Restriction Sites:

Sgfl-MluI

Cloning Scheme:

Cloning sites used for ORF Shuttling:



* The last codon before the Stop codon of the ORF

ACCN: NM_001170741

ORF Size: 2223 bp

OTI Disclaimer: The molecular sequence of this clone aligns with the gene accession number as a point of reference only. However, individual transcript sequences of the same gene can differ through naturally occurring variations (e.g. polymorphisms), each with its own valid existence. This clone is substantially in agreement with the reference, but a complete review of all prevailing variants is recommended prior to use. [More info](#)

OTI Annotation: This clone was engineered to express the complete ORF with an expression tag. Expression varies depending on the nature of the gene.

Components: The ORF clone is ion-exchange column purified and shipped in a 2D barcoded Matrix tube containing 10ug of transfection-ready, dried plasmid DNA (reconstitute with 100 ul of water).

- Reconstitution Method:**
1. Centrifuge at 5,000xg for 5min.
 2. Carefully open the tube and add 100ul of sterile water to dissolve the DNA.
 3. Close the tube and incubate for 10 minutes at room temperature.
 4. Briefly vortex the tube and then do a quick spin (less than 5000xg) to concentrate the liquid at the bottom.
 5. Store the suspended plasmid at -20°C. The DNA is stable for at least one year from date of shipping when stored at -20°C.

RefSeq: [NM_001170741.3](#)

RefSeq ORF: 2226 bp

Locus ID: 441457

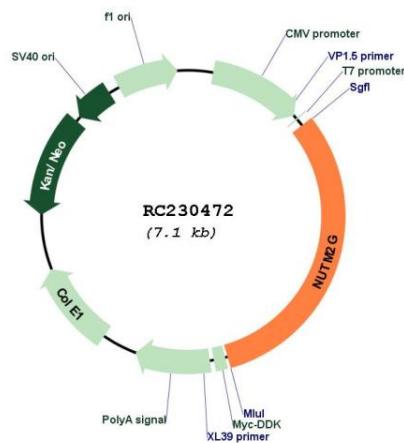
UniProt ID: [Q5VZR2](#)

Cytogenetics: 9q22.33

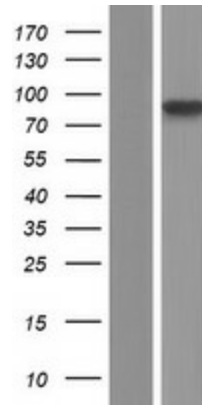
Protein Families: Secreted Protein

MW: 79.5 kDa

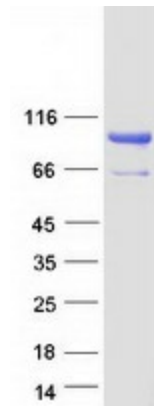
Product images:



Circular map for RC230472



Western blot validation of overexpression lysate (Cat# [LY433472]) using anti-DDK antibody (Cat# [TA50011-100]). Left: Cell lysates from untransfected HEK293T cells; Right: Cell lysates from HEK293T cells transfected with RC230472 using transfection reagent MegaTran 2.0 (Cat# [TT210002]).



Coomassie blue staining of purified NUTM2G protein (Cat# [TP330472]). The protein was produced from HEK293T cells transfected with NUTM2G cDNA clone (Cat# RC230472) using MegaTran 2.0 (Cat# [TT210002]).