

Product datasheet for **RC230454**

DPY19L3 (NM_001172774) Human Tagged ORF Clone

Product data:

Product Type:	Expression Plasmids
Product Name:	DPY19L3 (NM_001172774) Human Tagged ORF Clone
Tag:	Myc-DDK
Symbol:	DPY19L3
Mammalian Cell Selection:	Neomycin
Vector:	pCMV6-Entry (PS100001)
E. coli Selection:	Kanamycin (25 ug/mL)



[View online »](#)

ORF Nucleotide
Sequence:

>RC230454 representing NM_001172774
Red=Cloning site Blue=ORF Green=Tags(s)

TTTTGTAATACGACTCACTATAGGGCGGCCGGAATTCGTGACTGGATCCGGTACCGAGGAGATCTGCC
GCCGCGATCGCC

ATGATGTCCATCCGGCAAAGAAGAGAAATAAGAGCCACAGAAGTTTCTGAAGACTTTCAGCCCAAGAAG
AAAATGTGAAGTTGAAAATAAATTGCCATCTGGTTGTACCAGTAGAAGATTATGGAAGATTTTGTCAAT
GACAAATGGTGGAAACATTGCCCTTTGCATTGGACTTCTTACATCTGTCTACCTGCCACGTTACATGAA
AATGATTTATGGTTTTCTAATATTAAGGAAGTGGAGCGAGAAATCTCATTGAGACAGAGTGTGGCCTGT
ATTACTCTACTACAAGCAGATGCTGCAGGCTCCAACCTCGTGAAGGTTTTTCATGGCCTAATATATGA
TAATAAACTGAATCTATGAAGACAATTAACCTCCTTCAGCGAATGAATATTTACCAAGAGGTTTTTCTC
AGTATTTTATATAGAGTTCTACCCATACAGAAATATTTAGAGCCAGTTTATTTTTATATTTACACCTTAT
TTGGGCTCCAGGCGATCTATGTCACAGCTCTACATAACCAGCTGGCTACTCAGTGGTACATGGCTGTC
AGGACTGTTGGCAGCTTTCTGGTATGTCACAAATAGAATAGATACCACAAGAGTTGAGTTTACCATCCCA
CTGAGGGAGAAGTGGGCACTGCCATTCTTTGCAATTCAGATAGCAGCAATTACATATTTCTGAGACCAA
ACTTACAGCCTCTTTCTGAAAGGCTGACACTTCTTGCATTTTTCATATCAACTTTTCTTTAGTCTGAC
ATGGCAATTTAATCAATTTATGATGCTGATGCAAGCATTAGTGTCTTCCACTGGACTCCCTGGACATG
CTGCCAGCAGTGAAGGCGACATGGCTGTATGGAATACAGATAACAAGTTTACTCCTGGTCTGCATTTCTC
AGTTTTTAAATCCATGATTTCTGGATCACTGCTTATCAGTTTTAACCTTTCAGTATTCATTGCAAGAAA
ACTTCAGAAAACTGAAAAGTGAAGCTTCTTAATAGGCTTGGGAACTTTTGTACATTTATTTATG
GTTTTATGTTGACACTTTTTCTCAACAACATAATTAAGAAAATCTTAACCTGAAGTCAGATGAACACA
TATTTAAATTTCTGAAGGCAAAATTTGGGCTTGGAGCAACAAGGATTTTGTGCAAAATCTCTATCTGTG
TGAAGAAGCTTTTGGCCTCCTGCCTTTAATACATTTGGAAGGCTTTGAGATACTCTGCTTTTTTATGCT
TACATATTCGTTCTGTCCATCACAGTGATTGTAGCATTGTTGCTTTCATAATCTCAGTGATTCTA
CAAATCAACAATCCGTGGTAAAATGAAAAAGGCACAGTTGACCTGAAACCAGAAAAGTCCCTACAACCT
AATACATACCATTCTGTTGGATTCTTGGCATTGAGTACAATGAGAATGAAGTACCTCTGGACGTCACAC
ATGTGTGTGTTTCGCATCATTCCGGCTATGTAGCCCTGAAATATGGGAGTTACTTCTGAAGTCAGTCCATC
TTTATAACCCAAAGAGGATATGTATAATGCGATATTCAGTACCGATTAATACTGCTGTATCTATGCTA
TAAGTTCTGGCCAGGAATGATGGATGAACTCTCCGAGTTGAGAGAATTCTATGATCCAGATACAGTGGAG
CTGATGAACTGGATTAACCTAACACTCCAAGAAAGGCTGTGTTTGGGGGAGCATGCAGTTGCTGGCCG
GAGTCAAGCTGTGCACGGGAAGGACCCTAACCAACCACCCGCACTATGAAGACAGCAGCCTGAGAGAGCG
GACCAGAGCGGTTTATCAGATATATGCCAAGAGGGCACCAGAGGAAGTGCATGCCCTCCTAAGGTCTTC
GGCACTGACTACGTAATCCTGGAAGACAGCATCTGCTACGAGCGGAGGCACCGCCGGGGCTGCCACTCC
GGGACCTGCTGGACATTGCCAACGGCCACATGATGGATGGCCAGGAGAGAATGATCCTGATTTGAAACC
TGCAGACCACCTCGCTTCTGTGAAGAGATCAAAAGAACTGCCTCCCTACGTGGCCTACTTCACCAGA
GTGTTCCAGAACAAAACCTTCCACGTTTACAAGCTGTCCAGAAACAAG

ACGCGTACGCGGCCGCTCGAGCAGAACTCATCTCAGAAGAGGATCTGGCAGCAATGATATCCTGGATT
ACAAGGATGACGACGATAAGGTTTAA

Protein Sequence: >RC230454 representing NM_001172774
Red=Cloning site Green=Tags(s)

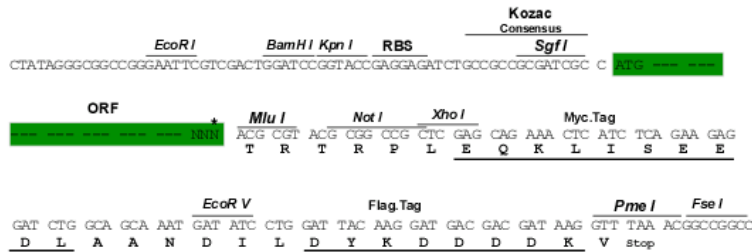
MMSIRQRREIRATEVSEDFPAQEENVKLENKLP SGCTSRRLWKILSLTIGGTIALCIGLLTSVYLATLHE
 NDLWFSNIKEVEREISFRTECGLYYSYKQMLQAPTLVQGFHGLIYDNKTESMKTINLLQRMNIYQEVFL
 SILYRVLPIQKYLEPVYFYIYTLFGLQAIYVTALYITSWLLSGTWLSGLLAFWYVTNRIDTTRVEFTIP
 LRENWALPFFAIQIAAITYFLRPNLQPLSERLTLAIFISTFLFSLTWQFNQFMMLMQALVLTLDLSDLM
 LPAVKATWLYGIQITSLLLVCILQFFNSMILGSLLSFNLSVFIARKLQKNLKTGSFLNRLGKLLHLFM
 VLCLTLFLNIIKKILNLKSDEHIFKFLKAKFGLGATRDFDANLYLCEEAFGLLPFNTFGRLSDTLLFYA
 YIFVLSITVIVAFVAVFHNLSNSTNQSVGKMEKGTVDLKPETAYNL IHTILFGFALSTMRMKYLWTS
 MCVFASFGLCSPEIWELLLKSVHLYNPKRICIMRYSVPIILLYLCYKFWPGMDELSELREFYDPDTE
 LMNWINSNTPRKAVFAGSMQLLAGVKLCTGRTL TNHPHYEDSSLRERTRAVYQIYAKRAPEEVHALLRSF
 GTDYVILEDSICYERRHRRGCLRDLDDIANGHMMDGPGENDPDLKPADHPRFCEEIKRNLPPYVAYFTR
 VFQNKTFHVKLSRNK

TRTRPLEQKLISEEDLAANDILDYKDDDDKV

Restriction Sites: SgfI-MluI

Cloning Scheme:

Cloning sites used for ORF Shuttling:



* The last codon before the Stop codon of the ORF

ACCN: NM_001172774

ORF Size: 2148 bp

OTI Disclaimer: The molecular sequence of this clone aligns with the gene accession number as a point of reference only. However, individual transcript sequences of the same gene can differ through naturally occurring variations (e.g. polymorphisms), each with its own valid existence. This clone is substantially in agreement with the reference, but a complete review of all prevailing variants is recommended prior to use. [More info](#)

OTI Annotation: This clone was engineered to express the complete ORF with an expression tag. Expression varies depending on the nature of the gene.

Components: The ORF clone is ion-exchange column purified and shipped in a 2D barcoded Matrix tube containing 10ug of transfection-ready, dried plasmid DNA (reconstitute with 100 ul of water).

Reconstitution Method:

1. Centrifuge at 5,000xg for 5min.
2. Carefully open the tube and add 100ul of sterile water to dissolve the DNA.
3. Close the tube and incubate for 10 minutes at room temperature.
4. Briefly vortex the tube and then do a quick spin (less than 5000xg) to concentrate the liquid at the bottom.
5. Store the suspended plasmid at -20°C. The DNA is stable for at least one year from date of shipping when stored at -20°C.

RefSeq: [NM_001172774.1](#), [NP_001166245.1](#)

RefSeq ORF: 2151 bp

Locus ID: 147991

UniProt ID: [Q6ZPD9](#)

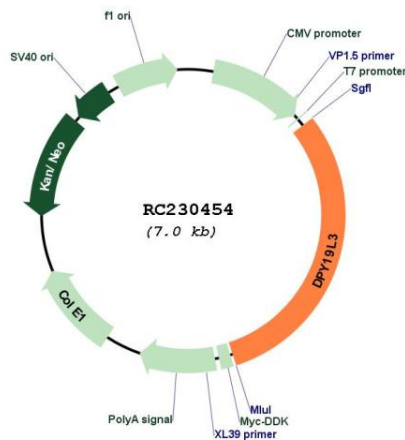
Cytogenetics: 19q13.11

Protein Families: Transmembrane

MW: 83.6 kDa

Gene Summary: Probable C-mannosyltransferase that mediates C-mannosylation of tryptophan residues on target proteins.[UniProtKB/Swiss-Prot Function]

Product images:



Circular map for RC230454