

Product datasheet for **RC230453**

FREM1 (NM_001177704) Human Tagged ORF Clone

Product data:

Product Type:	Expression Plasmids
Product Name:	FREM1 (NM_001177704) Human Tagged ORF Clone
Tag:	Myc-DDK
Symbol:	FREM1
Synonyms:	BNAR; C9orf143; C9orf145; C9orf154; MOTA; TILRR; TRIGNO2
Mammalian Cell Selection:	Neomycin
Vector:	pCMV6-Entry (PS100001)
E. coli Selection:	Kanamycin (25 ug/mL)



[View online »](#)

ORF Nucleotide
Sequence:

>RC230453 representing NM_001177704
Red=Cloning site Blue=ORF Green=Tags(s)

TTTTGTAATACGACTCACTATAGGGCGGCCGGGAATTCGTCGACTGGATCCGGTACCGAGGAGATCTGCC
GCCGCGATCGCC

ATGGTGACACAAGAATCCATGCTGAAGGCTGCCTTGCCCTCTTTACCAGATTCATCATCAGCAATGGAC
TGC GGACCGAGCACGGGGTGTGGAGATCACACTGGAGACTGTGGACAGAGCCCTGCCTGTGGTAACCAG
GAACAAGGGGTTGAGACTGGCCCAAGGGGCCGTGGGCCTGCTTTCCCTGACCTCCTTCAGCTGACCGAC
CCTGATACACCTGCGGAGAACCTCACCTTCTTGGTTCAGCTCCCCAGCATGGCCAGCTCTACCTGT
GGGGGACAGGGCTACTTCAACACAATTTACCCAGCAGGATGTGGACAGCAAGAATGTGGCCTATCGGCA
CTCAGGAGGGGACTCCCAGACTGACTGCTTTACTTTTCATGGCCACAGATGGGACAAACCAAGGCTTTATT
GTGAATGGGAGAGTGTGGGAAGAACCTGTTTTATTCACCATTAGGTAGACCAATTGGACAAAACAGCTC
CTCGTATCACACTCTTGCAATCCCTTCTCAAGTGGGGCTCCTGAAAAATGGCTGCTACGGGATTTACAT
CACTTCCCGCGTGTGAAGGCATCAGACCTGACACTGAGGACGATCAGATCATCTTTAAAATTCTACAA
GGCCAAAACATGGACATCTGGAGAACAACAACAGGTGAATTTATCCATGAGAAAATTTAGCCAAAAGG
ACTTAAACAGTAAGACTATTCTTACATATAAACCCTCTTTGGAAGTAAATTCAGATACCGTGGGAATT
TCAAATCATGGACCCACAGGGAACCTCGGCCACTCCTCAAATTTTGGAACTGAAGTGGTCTCATATTGAA
TGGTCACAGACCGAATATGAAGTCTGTGAGAATGTGGGTTTGTGCCCTTGGAAATATCAGAAGGGGAT
ATTCATGGACTCGGCCCTTTGTGGGTATAAAGGTCAACCAAGTGTGAGTGCAGTTGGAAAAGATTTAC
CGTATTCCATCTAACTGATTCAGTTTGACCCAGGAATGTCAACTAAGATGTGGAATATAGCAATTACC
TATGACGGATTAGAGGAAGATGATGAGGTCTTTGAAGTAATTCTGAACTCCCTGTGAATGCAGTTCTTG
GCACAAAAGACAAAAGCTGCAGTGAAAATTTTGGACTCAAAGGAGGACAATGCCATCCTTCATATCTCC
CAACCAAAGCAAGCACAGCACATGGGAGAAGGGCATTGGCATCTGCTGCCCCAGGGTCTTCTCATCC
ACCACTTCTGGTTCCTTTCATCTGGAAAGAAGACCTTCCATCTTCCATGCAGCTAGCAGTTCATCAGGG
GAGACACCCTGCGGGGCTTTGATTCTACAGATCTTCTCAAAGGAAGCTTAGGACCCGTGGGAATGGCAA
AACAGTTCGTCCATCCTCTGTTTATAGAAATGGAACAGACATCATCTATAATTATCATGGGATAGTTTCC
TTGAACTGGAGGATGACAGTTTCCCACTCACAAAAGGAAGGCCAAAGTATCCATCATTAGTCAGCCAC
AAAAGACAATCAAAGTGGCAGAACTGCCTCAAGCAGATAAGGTGGAATCCACAACACTGACTCACACTTCCC
CAGACAGGACCAGTTGCCCTCATTTCAAAGAACTGCACTCTGGAATTAAGGGACTCTTCCATTTTGAA
GAAGGCATCCAGAAGCTGTATCAGTCAATGGGATCGCCTGGAAAGCCTGGAGTCCCAAACCAAGGATG
TGAAGACAAATCCTGTCCAGCCGGGTGGCACCAGCACTCAGGCTACTGTACATCTTGATCACAGAGCA
GAAAGGCACCTGGAATGCGGCTGCCAAGCTTGCAAGGAAACAATACCTGGCAACCTTGTAACTGTATTC
TCCAGGCAGCACATGCGGTGGCTCTGGGACATTGGTGGGAGAAAGTCTTTTGGATAGGTTTGAACGACC
AAGTGCATGCTGGCCACTGGGAGTGGATCGGTGGTGAACCTGTTGCCCTCACCAATGGGAGAAGAGGGCC
CTCTCAACGCTCCAAGCTTGAAAGAGCTGTGTTTTGTTCAAAGACAAGGGAATGGCAAACAAAAGAC
TGTAGGAGAGCCAAACCTCATAATTATGTGTGTCCAGAAAATC

ACGCGTACGCGGCCGCTCGAGCAGAACTCATCTCAGAAGAGGATCTGGCAGCAAATGATATCCTGGATT
ACAAGGATGACGACGATAAGGTTTAA

Protein Sequence: >RC230453 representing NM_001177704
 Red=Cloning site Green=Tags(s)

MVTQESMLKAALPLFTRFIISNGLRTEHGVFEITLETVDRALPVVTRNKGLRLAQGAVGLLSPDLLQLTD
 PDTPAENLTFLVQLPQHGLYLWGTGLLQHNFTQQDVSKNVAYRHSGGDSQTDCTFFMATDGTNQGFI
 VNGRVWEEPVLFTIQVDQLDKTAPRITLLHSPSQVGLLKNGCYGIYITSRVLKASDPDTEDDQIIFKILQ
 GPKHGHLENTTTGFEIHEKFSQKDLNSKTILYIINPSLEVNSDTVEFQIMDPTGNSATPQIILELKWSHIE
 WSQTEYEVCEENVGLLPLEIIRRGYSMSAFVGIKVNQVSAAVGKDFTVIPSKLIQFDPGMSTKMWNIAIT
 YDGLEEDDEVFEVILNSPVNAVLTGKTKAAVKILDSKGGQCHPSYSSNQSKHSTWEKGIWHLLPPGSSSS
 TTSGSFHLEERRPLPSSMQLAVIRGDTLRGFDSTDLRQRKLRTRGNGKTVRPSSVYRNGTDIIYNYHGI
 LKLEDDSPFTHKRKAKVSIISQPQKTIKVAELPQADKVESTTDSHFPRQDQLPSFPKNCTLELKGLHFHE
 EGIQKLYQCNGIAWKAWSPTKDVEDKSCPAGWHQHSGYCHILITEQKGTWNAQAACREQYLGNLVTVF
 SRQHMRWLDIGGRKSFWIGLNDQVHAGHWEWIGGEPVAFNGRRGPSQRSKLGKSCVLVQRQGWQTKD
 CRRAKPHNYVCSRKL

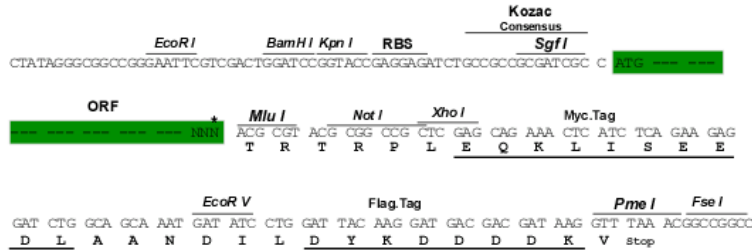
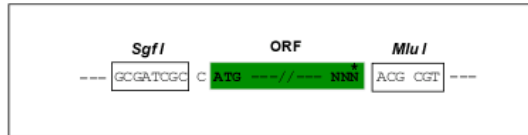
TRTRPLEQKLISEEDLAANDILDYKDDDDKV

Restriction Sites:

SgfI-MluI

Cloning Scheme:

Cloning sites used for ORF Shuttling:



* The last codon before the Stop codon of the ORF

ACCN: NM_001177704

ORF Size: 2145 bp

OTI Disclaimer: The molecular sequence of this clone aligns with the gene accession number as a point of reference only. However, individual transcript sequences of the same gene can differ through naturally occurring variations (e.g. polymorphisms), each with its own valid existence. This clone is substantially in agreement with the reference, but a complete review of all prevailing variants is recommended prior to use. [More info](#)

OTI Annotation: This clone was engineered to express the complete ORF with an expression tag. Expression varies depending on the nature of the gene.

Components: The ORF clone is ion-exchange column purified and shipped in a 2D barcoded Matrix tube containing 10ug of transfection-ready, dried plasmid DNA (reconstitute with 100 ul of water).

Reconstitution Method:

1. Centrifuge at 5,000xg for 5min.
2. Carefully open the tube and add 100ul of sterile water to dissolve the DNA.
3. Close the tube and incubate for 10 minutes at room temperature.
4. Briefly vortex the tube and then do a quick spin (less than 5000xg) to concentrate the liquid at the bottom.
5. Store the suspended plasmid at -20°C. The DNA is stable for at least one year from date of shipping when stored at -20°C.

RefSeq: [NM_001177704.3](#)

RefSeq ORF: 2148 bp

Locus ID: 158326

UniProt ID: [Q5H8C1](#)

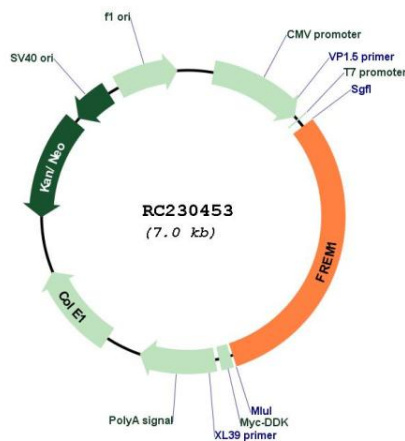
Cytogenetics: 9p22.3

Protein Families: Protease, Transmembrane

MW: 80.7 kDa

Gene Summary: This gene encodes a basement membrane protein that may play a role in craniofacial and renal development. Mutations in this gene have been associated with bifid nose with or without anorectal and renal anomalies. Alternatively spliced transcript variants encoding different isoforms have been described. PubMed ID 19940113 describes one such variant that initiates transcription within a distinct, internal exon; the resulting shorter isoform (named Toll-like/interleukin-1 receptor regulator, TILRR) is suggested to be a co-receptor of the interleukin 1 receptor family and may regulate receptor function and Toll-like receptor/interleukin 1 receptor signal transduction, contributing to the control of inflammatory response activation. [provided by RefSeq, Apr 2011]

Product images:



Circular map for RC230453