

Product datasheet for **RC230445**

DDX4 (NM_001166533) Human Tagged ORF Clone

Product data:

Product Type:	Expression Plasmids
Product Name:	DDX4 (NM_001166533) Human Tagged ORF Clone
Tag:	Myc-DDK
Symbol:	DDX4
Synonyms:	VASA
Mammalian Cell Selection:	Neomycin
Vector:	pCMV6-Entry (PS100001)
E. coli Selection:	Kanamycin (25 ug/mL)



[View online »](#)

ORF Nucleotide Sequence:

>RC230445 representing NM_001166533
 Red=Cloning site Blue=ORF Green=Tags(s)

TTTTGTAATACGACTCACTATAGGGCGGCCGGAATTCGTCGACTGGATCCGGTACCGAGGAGATCTGCC
 GCC**CGCATCGCC**

ATGGGAGATGAAGATTGGGAAGCAGAAATCAACCCTCATATGTCTTCTATGTTCCCATATTTGAGAAGG
 ATAGGTATTCTGGAGAAAATGGAGACAATTTAAACAGGACTCCAGCTTCATCATCAGAAAATGGATGATGG
 ACCTTCTCGAAGAGATCATTTCATGAAAAGTGGATTTGCCTCTGGGCGGAATTTTGGAAAACAGAGATGCT
 GGTGAGTGAATAAGCGAGATAATACATCCACAATGGGTGGTTTTGGAGTTGAAAAGAGTTTTGGAAACA
 GAGGTTTTTCAAACAGCAGGTTTGAAGATGGTGATAGCTCTGGTTTTCTGGAGAGGCTATCGAGATGGAAA
 TAATTCAGAAGCTTCAGGGCCATACAGAAGAGGTGGAAGAGGTAGTTCCGAGGTTGCCGTGGAGGATTT
 GGTCTAGGAAGTCCAATAATGACTTAGACCCAGACGAATGTATGCAGCGCACTGGTGGCCTTTTTGGTT
 CTAGAAGACCAGTATTAAGTGGCACAGGTAATGGTGATACTTCTCAAAGCAGAAGTGGCAGTGAAGTGA
 ACGAGGTGGTTACAAAGTTTTAAATGAAGAAGTAATAACAGGCTCTGAAAAGAATCTTGGAAAGTCAGAA
 GCAGAAGGAGGAGAAAAGTAGTGATACTCAAGGACCAAAAGTGACCTACATACCCCTCCTCCACCTGAGG
 ATGAGGACTCCATCTTTGCACATTATCAGACAGGCATAAACTTCGACAAAATACGACACTATCTTGTGGA
 AGTGTCTGGACATGATGCACCACCAGCAATCTGACTTTTGAAGAAGCTAATCTCTGTGACAGACTGAAT
 AACAACATTGCTAAAGCTGGTTATACTAAGCTTACTCCTGTGCAAAAATACAGTATTCCTATCATACTTG
 CAGGACGAGATTTGATGGCTTGCCTCAAAACAGGCTGGGAAGACTGCGGCTTTTCTCCTACCAATTTT
 GGCTCATATGATGCATGATGGAATAACTGCCAGTCGTTTTAAAGAGTTGCAGGAACCAGAGTGATATTATT
 TAAGAGCTGTTGTTATATATGGGGAAACCCAGCTGGGACATTCAATTCGACAAAATAGTACAAGGCTGTA
 TATATTATGTGCTACTCCTGGAAGACTGATGGATATCATAGGCAAGAAAAGATTGGTCTCAAACAGATC
 AAATACTTAGTTTTGGATGAAGCTGATCGCATGTTGGATATGGTTTTGGTCCAGAAAATGAAGAAGTTAA
 TTTCTTGGCCAGGAATGCCATCAAAGGAACAGCGCCAAACCTTATGTTCAAGTCAACTTTTCCAGAGGA
 AATTCAAAGGTTGGCTGCAGAGTTTTTAAAGTCAAATTATCTGTTTGTGCTGTTGGACAAGTGGGTGGA
 GCATGTAGAGATGTTGAGCAGACCGTTCTCCAAGTTGGCCAGTTCTCAAAAAGAGAAAAGCTCGTTGAAA
 TTCTGCGAAACATAGGGGATGAAAGAACTATGGTCTTTGTTGAAACTAAGAAAAAGCAGATTTTATTGC
 AACTTTTCTTTGTCAAGAAAAAATCAACTACAAGTATTCATGGTGATCGGGAACAGAGAGCGGGAG
 CAAGCTCTTGGAGATTTTCGCTTTGAAAAGTGCCAGTCTTGTGCTACTTCAGTAGCTGCCAGAGGGC
 TGGATATTGAAAATGTGCAACATGTTATCAATTTTGATCTTCTTCTACCATTGATGAATATGTTTCATCG
 AATTGGGCGTACTGGTCGTTGTGGGAATACTGGCAGAGCAATTTCTTTTTTGTCTTGAATCGGATAAC
 CATTTAGCACAGCCTCTAGTAAAAGTATTGACAGATGCTCAACAGGATGTTCTGCATGGTTGGAAGAAA
 TTGCCTTTAGTACATACATTCTGGCTTCAGTGGTAGTACAAGAGGAAACGTGTTTGCATCAGTTGATAC
 CAGAAAGGGCAAGAGCACTTTGAACACAGCTGGGTTTTCTTCTTCAAGCTCCCAATCCAGTAGATGAT
 GAGTCATGGGAT

ACGCGTACGCGGCCGCTCGAGCAGAAACTCATCTCAGAAGAGGATCTGGCAGCAAATGATATCCTGGATT
 ACAAGGATGACGACGATAAGGTTTAA

Protein Sequence: >RC230445 representing NM_001166533
 Red=Cloning site Green=Tags(s)

```
MGDEDWEAEINPHMSSYVPIFEKDRYSGENGNFNRTPASSEMDDGPSRRDHFMKSGFASGRNFGNRDA
GECNKRDNTSTMGGFVVGKSFGNRGSNSRFEDGDSSGFWRGYRDGNNSEASGPYRRGGRGSFRGCRGGF
GLGSPNNDLDPDECMQRTGGLFGSRRPVL SGTNGDTSQSRSGSGSERGGYKGLNEEVITGSGKNSWKSE
AEGGESDQTQGPKVTYIPPPPEDEDSIFAHYQTGINFDKYDTILVEVSGHDAPPAILTFEEANLCQTLN
NNIAKAGYTKLTPVQKYSIPIILAGRDLMACAQTGSGKTA AFLLPILAHMMHDGITASRFKELQEPECII
VAPTRELVNQIYLEARKFSFGTCVRAVVIYGGTQLGHSIRQIVQGCNILCATPGRMLDIIIGKEIKGLKQI
KYLVLDEADRMLDMFGPEMKKLI SCPGMPSKEQRQTLMF SATFPEEIQLAAEF LKSNLYFVAVGQVGG
ACRDVQQT VLVQVQF SKREKLVEILRNIGDERTMVFVETKKKADF IATFLCQEKISTTSIHGDREQRERE
QALGDFRFGKCPVLVATSVAARGLDIENVQHVINF DLPSTIDEYVHRIGRTGRCGNTGRAISFFDLESDN
HLAQPLVKVLTDAQQDVP AWLEEIAFSTYIPGFSGSTRGNV FASVDTRKGKSTLNTAGFSSSQAPNPVDD
ESWD
```

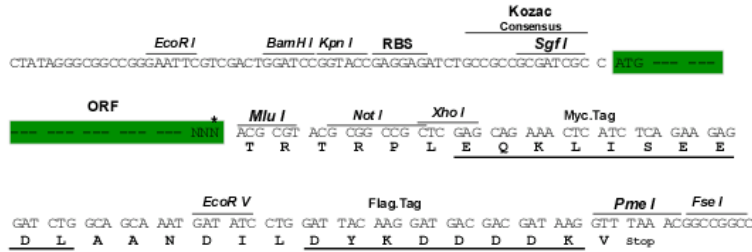
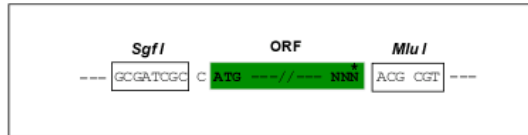
TRTRPLEQKLI SEEDLAANDILDYKDDDDKV

Restriction Sites:

Sgfl-MluI

Cloning Scheme:

Cloning sites used for ORF Shuttling:



* The last codon before the Stop codon of the ORF

ACCN: NM_001166533

ORF Size: 2112 bp

OTI Disclaimer: The molecular sequence of this clone aligns with the gene accession number as a point of reference only. However, individual transcript sequences of the same gene can differ through naturally occurring variations (e.g. polymorphisms), each with its own valid existence. This clone is substantially in agreement with the reference, but a complete review of all prevailing variants is recommended prior to use. [More info](#)

OTI Annotation: This clone was engineered to express the complete ORF with an expression tag. Expression varies depending on the nature of the gene.

Components: The ORF clone is ion-exchange column purified and shipped in a 2D barcoded Matrix tube containing 10ug of transfection-ready, dried plasmid DNA (reconstitute with 100 ul of water).

Reconstitution Method:

1. Centrifuge at 5,000xg for 5min.
2. Carefully open the tube and add 100ul of sterile water to dissolve the DNA.
3. Close the tube and incubate for 10 minutes at room temperature.
4. Briefly vortex the tube and then do a quick spin (less than 5000xg) to concentrate the liquid at the bottom.
5. Store the suspended plasmid at -20°C. The DNA is stable for at least one year from date of shipping when stored at -20°C.

RefSeq: [NM_001166533.1](#), [NP_001160005.1](#)

RefSeq ORF: 2115 bp

Locus ID: 54514

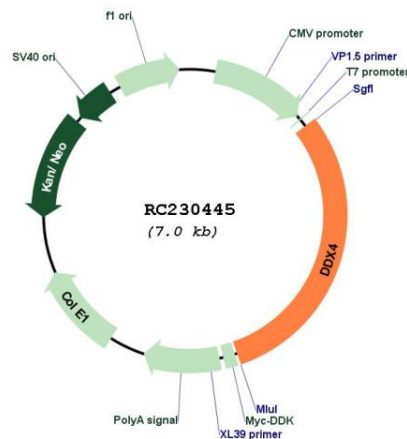
UniProt ID: [Q9NQI0](#)

Cytogenetics: 5q11.2

MW: 77.5 kDa

Gene Summary: DEAD box proteins, characterized by the conserved motif Asp-Glu-Ala-Asp (DEAD), are putative RNA helicases. They are implicated in a number of cellular processes involving alteration of RNA secondary structure such as translation initiation, nuclear and mitochondrial splicing, and ribosome and spliceosome assembly. Based on their distribution patterns, some members of this family are believed to be involved in embryogenesis, spermatogenesis, and cellular growth and division. This gene encodes a DEAD box protein, which is a homolog of VASA proteins in *Drosophila* and several other species. The gene is specifically expressed in the germ cell lineage in both sexes and functions in germ cell development. Multiple transcript variants encoding different isoforms have been found for this gene. [provided by RefSeq, Oct 2009]

Product images:



Circular map for RC230445