

Product datasheet for **RC230421**

TTC39B (NM_001168339) Human Tagged ORF Clone

Product data:

Product Type:	Expression Plasmids
Product Name:	TTC39B (NM_001168339) Human Tagged ORF Clone
Tag:	Myc-DDK
Symbol:	TTC39B
Synonyms:	C9orf52
Mammalian Cell Selection:	Neomycin
Vector:	pCMV6-Entry (PS100001)
E. coli Selection:	Kanamycin (25 ug/mL)



[View online »](#)

**ORF Nucleotide
Sequence:**

>RC230421 representing NM_001168339
 Red=Cloning site Blue=ORF Green=Tags(s)

TTTTGTAATACGACTCACTATAGGGCGGCCGGGAATTCGTGCGACTGGATCCGGTACCGAGGAGATCTGCC
 GCC**CGGATCGCC**

ATGGATGTCTGTGCTGGCCTGCCGCTCCGGGGCGGGGAAATCGAGTAGCTGCACTCAGGCCCGCCCGA
 GACCCGGAGGGAGCGCCGGGCCGTCCTTTTGCCTCCTTTGCCTGGGCTGAGCCAGAGCCGAGAGC
 AGGAGTCGGCTCTGAGTTCCTGCTTGGTTTTGGGTGGCAGCAGCCAGAGGAGGAATATGGCGCTTTA
 GGCAGCCGAGCGGAGCTGGAAGCGGACGAGGACGTTTTCGAAGATGCCTTGAAACCATCTCAATATCTT
 CCACTCAGATATGGCAACAAGCAGCCTTCACTTTGCATCATGTGATACACAACAGGCGCCAGACAGCG
 CGGAGCGTCTACTGTCAGCAGTTCATCATCAACCAAGGTGGATCTCAAGAGTGGCCTCGAAGAATGTGCT
 GTGGCATTGAACCTATTTCTAAGCAACAAATTTACAGACGCTTAGAATTGCTTCGCCCCGGGCTAAGG
 AGAGTATGTACCATGCCTGGGCTACAGTACCATTGTGGTGTGCAGGCTGTCTGACCTTCGAGCAACA
 GGACATCCAGAACGGCATTCTGCCATGAAGGACGCTTTACAAACCTGCCAAAAGAAAAATACACAGTT
 GTAGAATCTTTCTCAAGTCTTTCTAGAGGATCCCTGGAGCAACTGAGTGAAGAGGAAATGCATGCTG
 AAATCTGTTATGCCGAGTGTCTCTACAGAAAGCTGCACTCACGTTTGTGCGAGGATGAAAATATGATCAA
 CTTTCATCAAAGGTGGACTCAAAATAGAACAAAGTTACCAAATATATAAAGAAATGTCTTTCTATCCTGCAT
 GAAATTCAGAAGAACTTCAGCAGGAATCTTCTATGAGTTTGAAGGGGTGTCAAGCTTGGCAGTG
 GGGCCTTAATTTGATGCTGTCCCTTTACCAGCAAGGATTATCAGACTACTAGAATTTATTGGATTTTC
 TGGGAATAGGGAGTTGGGCTCCTGCAGTACGTGAAGGTGCTTCAGGAAGGAGCATGAGGTCTGCAGTG
 TGCTGCTTAACCATCTTAGCTTTTACACTTACATCTCCCTAATACTTGGTACAGGAGAAGTGAATGTTG
 CGAAGCAGAGCGTCTCCTGGCACCCCTCCTCCAGCAGTTTCAAATGGCTCACTCGTGTGTTTTATCA
 TGCCCGAATAGAGTTGCTGAAAGGGAATCTTGAAGAGGCACAAGAAGATTTCAAAAATGCATTTAGTT
 CAAGAAGAAATGGAACAGTTTACCATCTGCTACTGGGAGCTAATGTGGATTAATGTTTTCAACAAA
 ACTGGATGCAGGCATATTACTATTCAGATCTGCTTTGCAAAGAGAGTAAATGGTCCAAGGCACTTATGT
 GTTCTTGAAGCAGCAATTTTGTAGTATGCTTCCAGAGGAGGATGTAGTAGCAACGAATGAGAATGTGGTA
 ACTTTATTCAGACAGGTGGACAGCTTGAAGCAGAGAATTGCCGGGAAATCTATCCCTACTGAGAAGTTG
 CTGTGAGGAAGGCTCGGCGTTACTCCGCTCCTTACCTGCACCTGTGAAGCTCATCTTACCTGCCCTGGA
 AATGATGTATGTCTGGAATGGTTTTTCAATAGTGAGCAAAAAGAAAAGACCTTTCTGAAAATCTGTTAGTA
 ACTGTTGAAAAGCTGAGGCAGCTTTACAAAGTCAAAATTTAACAGCTTCTCTGTGGATGATGAGTGTCT
 TAGTGAAGTACTTAAAGGATGTTGCCTCAAGAACTTACAGCGGCCCTTGCAAGCTGAACTATGTTACAA
 TCATGTTGTGAAAAGTAAAAGCTACTGAAGTATGACCACTACCTAGTCCGCTTCACTCTATTTGAATTG
 GCATCTTTGTATAAAAAGCCAGGGGAAATTGACAAGGCCATAAAGTTCTAGAACTGCAAGGAACAACT
 ACAAAGATTACTCCCTGGAGTCCAGACTACACTTCAGAATTCAGGAGCTCTTACCTCTGGAGAAAACC
 TTCCTCAGAT

ACGCGTACGCGGCCGCTCGAGCAGAACTCATCTCAGAAGAGGATCTGGCAGCAATGATATCCTGGATT
 ACAAGGATGACGACGATAAGGTTTAA

Protein Sequence: >RC230421 representing NM_001168339
Red=Cloning site Green=Tags(s)

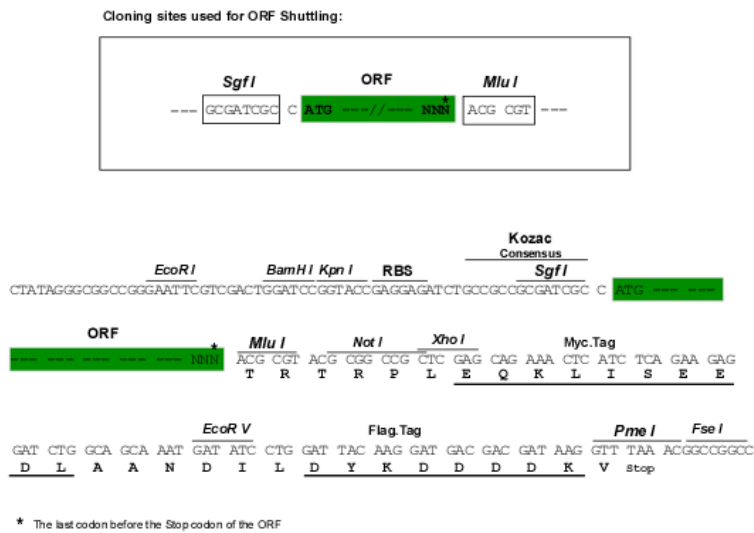
MDAVLACRLRGRGNRVAALRPPRPVGGSSAGPSPFALLCAGLSPEPRAGVGSEFPWFLLGGSSQRRNMALL
 GSRAELEADEDVFEDALETISISSHSDMATSSLHFASCDTQQAPRQAGASTVSSSSSTKVDLKSGLLECA
 VALNLFSLSNKFTDALELLRPWAKESMYHALGYSTIVVLQAVLTFEQDIONGISAMKDALQTCQKKKYTV
 VESFSSLLSRGSLEQLSEEEMHAEICYAECLLQKAALTFVQDENMINFIKGLKIRTSYQIYKECLSILH
 EIQKNLQEQEFFYEFEGGVKLGSGAFNMLSLLPARIIRLLEFIFGSGNRELGLLQLREGASGRSMRSAL
 CCLTILAFHTYISLILGTGEVNVAEAERLLAPFLQQFPNGSLVLFYHARIELLKGNLEEAQEVFQKCISV
 QEEWKQFHHLCYWELMWINVQQNWMQAYYSDLLCKESKWSKATYVFLKAAILSMLPEEDVVATNENVV
 TLFQVDSLKQRIAGKSIPTEKFAVRKARRYSASLPAPVKLILPALEMMYVWNGFSIVSKRDLSENLLV
 TVEKAAEALQSQNFNSFVDDECLVLLKGCCLKNLQRPLQAELCYNHVVESEKLLKYDHLYVPFTLFEL
 ASLYKSQGEIDKAIKFLETARNYKYDYSLESRLHFRIQAALHLWRKPSSD

TRTRPLEQKLISEEDLANDILDYKDDDDKV

Chromatograms: https://cdn.origene.com/chromatograms/mk8036_c06.zip

Restriction Sites: SgfI-MluI

Cloning Scheme:



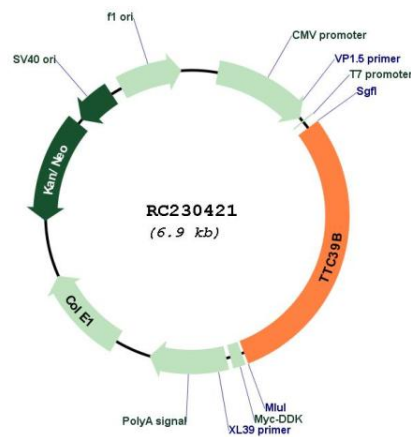
ACCN: NM_001168339

ORF Size: 2040 bp

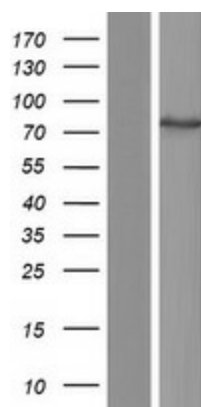
OTI Disclaimer: The molecular sequence of this clone aligns with the gene accession number as a point of reference only. However, individual transcript sequences of the same gene can differ through naturally occurring variations (e.g. polymorphisms), each with its own valid existence. This clone is substantially in agreement with the reference, but a complete review of all prevailing variants is recommended prior to use. [More info](#)

OTI Annotation: This clone was engineered to express the complete ORF with an expression tag. Expression varies depending on the nature of the gene.

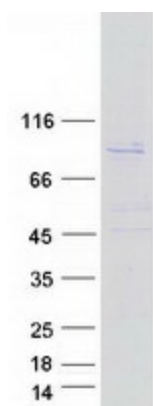
Components:	The ORF clone is ion-exchange column purified and shipped in a 2D barcoded Matrix tube containing 10ug of transfection-ready, dried plasmid DNA (reconstitute with 100 ul of water).
Reconstitution Method:	<ol style="list-style-type: none"> 1. Centrifuge at 5,000xg for 5min. 2. Carefully open the tube and add 100ul of sterile water to dissolve the DNA. 3. Close the tube and incubate for 10 minutes at room temperature. 4. Briefly vortex the tube and then do a quick spin (less than 5000xg) to concentrate the liquid at the bottom. 5. Store the suspended plasmid at -20°C. The DNA is stable for at least one year from date of shipping when stored at -20°C.
RefSeq:	<u>NM_001168339.1, NP_001161811.1</u>
RefSeq ORF:	2043 bp
Locus ID:	158219
UniProt ID:	<u>Q5VTQ0</u>
Cytogenetics:	9p22.3
MW:	77.1 kDa
Gene Summary:	Regulates high density lipoprotein (HDL) cholesterol metabolism by promoting the ubiquitination and degradation of the oxysterols receptors LXR (NR1H2 and NR1H3). [UniProtKB/Swiss-Prot Function]

Product images:


Circular map for RC230421



Western blot validation of overexpression lysate (Cat# [LY433421]) using anti-DDK antibody (Cat# [TA50011-100]). Left: Cell lysates from untransfected HEK293T cells; Right: Cell lysates from HEK293T cells transfected with RC230421 using transfection reagent MegaTran 2.0 (Cat# [TT210002]).



Coomassie blue staining of purified TTC39B protein (Cat# [TP330421]). The protein was produced from HEK293T cells transfected with TTC39B cDNA clone (Cat# RC230421) using MegaTran 2.0 (Cat# [TT210002]).