

Product datasheet for **RC230420**

MAP7D2 (NM_001168467) Human Tagged ORF Clone

Product data:

Product Type:	Expression Plasmids
Product Name:	MAP7D2 (NM_001168467) Human Tagged ORF Clone
Tag:	Myc-DDK
Symbol:	MAP7D2
Mammalian Cell Selection:	Neomycin
Vector:	pCMV6-Entry (PS100001)
E. coli Selection:	Kanamycin (25 ug/mL)



[View online »](#)

ORF Nucleotide
Sequence:

>RC230420 representing NM_001168467
Red=Cloning site Blue=ORF Green=Tags(s)

TTTTGTAATACGACTCACTATAGGGCGGCCGGGAATTCGTCGACTGGATCCGGTACCGAGGAGATCTGCC
GCC**CGCATCGCC**

ATGGAGGGATTTTTGAAATCAGATGAGAGGCAGAGATTGGCCAAAGAAAGACGAGAAGAAAGAGAAAAAT
GTCTGGCTGCTCGGGAGCAACAGATCCTGGAGAAACAGAAAAGAGCCAGGCTGCAGTACGAAAAGCAAAT
GGAGGAGCGATGGCGAAAACCTGGAAGAGCAGCGGCAGCGGGAGGACCAAAAGAGAGCTGCTGTGGAAGAG
AAAAGGAAACAGAAGCTCCGGGAGGAGGAGAACGGCTGGAGGCGATGATGCGCCGGTCCCTGGAGCGCA
CACAGCAGCTGGAGCTGAAAAAGAAGTATTCGTGGGGAGCACCCTGGCCATTGGACCCGGAGGACATGA
TGCATGTGACAACTTTCAACATCAACTATGAGTTTGCCAAAGCCAACGGAGCCTCCCATGAATAAACGC
CTGTCTTCATCCACCGTGGCAATATCCTATTCCCAGACCGAGCTCCTCTTGGCCCTCTTAACCTTCTT
ACAAGTCTTCACCCACTCGAAACATTGAGAAGAAGAAAGCTACATCTACGTCTACATCTGGTGCAGGAGA
TGTTGGGAAAGAAGCCCTTTCAGGAGGAGAGGCCCTCTCTGGTGGAGAAGGTGAAGCGGGGGCAACGAACA
GCAACTTCTCTTCTGTTGTGAACCTTCGGTCCCTCTGAGAAGATGTGAGTTTTCTGGAGGCATTCCTA
AGAGACCATCTTCTCCTGTGATATCCAAGACAGCTACTAAAGCTTATCCACAGTCTCCAAAGACAACGAA
ACCTCCCTACCCAGGGTCTCCTGTGAAGTACCGCTTACCTGCCCTTCTGGCCAAGACATGCCAAAGAGG
AAAGCGGAGAAAGAGAAGAGCAACAAGGAAAGGGAAGGTACCTTGGCTCAGCAGGCTGCTGGCCCGCAAG
GAGAGGAAGCCCTAGAGAAGCATGTAGTGGACAAGCATGCCAGCGAGAAGCATGCTGCTGCCCGCAGGAGG
GAAAGCCGAAAACAGCGCAGCCTTGGGGAAGCCACAGCAGGCACCACTGATGCAGGAGAGGCTGCGAAG
ATCTTGGCTGAAAAGAGAAGACAGGCCCGGCTGCAGAAGGAACAGGAGGCAAGAACGACTGGAGAAGG
GGAAGCCCGAAAAGCAGGAAGAAGAAGGAAGCGCAGGAAGAGGAAAAGAAAAAACAGGAAGGGGAAAGAG
AAAAGAAAAGCAGGCGAGGAGGCCAAGCGGAAGGCTGAGGAGGAGCTGTTGTTGAAAAGAAAAGCAAGAAC
AAGAAAAACAAGAGAAAGCCATGATTGAAAAGCAGAAAGAAGCAGCAGAAAACAAGGCCCGGAGGTAGC
TGAACAGATGCGTCTCGAGAGAGAACAGATTATGCTGCAGATTGAGCAGGAGAGACTGGAGAGAAAAGAG
AGAATAGATGAAATCATGAAGAGAAACAAGGAAAAGTGTGTGTCTCCACAAGTGAAGAAAGAACCCCA
AAGTGGGGTCCAGCCTGCTGTGTGTGGAAAAGAAGACAAAACCTGGTGTCCCAACAAAATGGAAT
CAATGGATTGAACACCTGCCAGGAAGTTAATGGTGTGGATCACGCTGCCCCAGAACTTATCCCAAGAC
ATTTTCTCTAATGGGCTTAAGCCAGCTGGGGACTCATTATCTGGATGCCCTTGTGGAAATCAAATA
GCCTGGATGATTAAGTGAAGAAGTTCAGTCTATGGATGTGAGTCTGTTTCAAAGAAGAGCTTATCTC
TATCCCGGAATTTTACCAGTGAGTGAATGATTCTGGGGTGTCTCTGGACAAAATGGAAGTGGTAAT
GCCCGAGCACTTCAAGATCTCTTAGATTTCACTGGTCCCCGACATTCCTCAAGAGATCCAGTGAATATC
TCAGCCTGGAGACTGTAACAAAACCTTATCGAAGGATTTAACAGTCTGGCCAAGAACTCCTCTCAA
CACCTTCTGT

ACGCGTACGCGGCCGCTCGAGCAGAACTCATCTCAGAAGAGGATCTGGCAGCAATGATATCCTGGATT
ACAAGGATGACGACGATAAGGTTTAA

Protein Sequence: >RC230420 representing NM_001168467
Red=Cloning site Green=Tags(s)

```
MEGFLKSDERQLAKERREEREKCLAAREQQILEKQKRARLQYEKQMEERWRKLEEQRQREDQKRAAVEE
KRKQKLREEEERLEAMRRSLERTQQLELKKKYSWGAPLAIGPGGHDACDKLSTSTMSLPKPTPEPPMNR
LSSSTVAISYSPDRAPLGPLNPSYKSSPTRNIEKKKATSTSTSGAGDVGKEALSGGEASLVEKVKRGQRT
ATSLPVVNFSGPLRRCEFSGGIPKRPSSPVI SKTATKAYPQSPKTKPPYPGSPVKYRLPALSGQDMPKR
KAEKEKSNKEREGLAQQAAGPQGEAELEKHVVDKHASEKHAAAAGGKAENSAALGKPTAGTTDAGEAAK
ILAEKRRQARLQKEQEEQERLEKEEQDRLEREELKRKAEERLRLEEEARKQEEERKRQEEEEKKQEGEE
KRKAGEEAKRKAEEELLKKEQEQEKQEKAMIEKQKEAAETKAREVAEQMRLEREQIMLQIEQERLERKK
RIDEIMKRTRKSDVSPQVKEDPKVGVQPAVCVEKTKLVVPNKMEINGLNTCQEVNGVDHAAPETYPQD
IFSNGLKPAGGLIHLDALDGKSNLDDSTEEVQSMQSPVSKHEELISIPFSPVSEMIPGVSLDQNGTGN
ARALQDLLDFTGPPTFPKRSSENLSDDCNKNLIEGFNSPGQETPLNTFC
```

TRTRPLEQKLISEEDLAANDILDYKDDDDKV

Chromatograms: https://cdn.origene.com/chromatograms/mk8072_f02.zip

Restriction Sites: SgfI-MluI

Cloning Scheme:



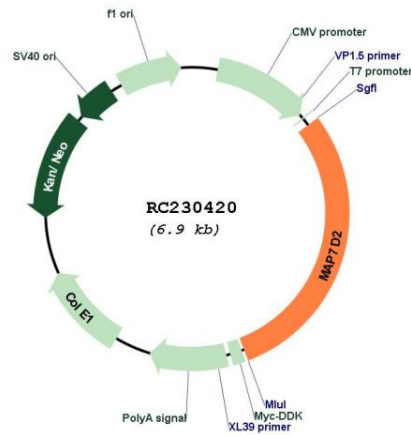
ACCN: NM_001168467

ORF Size: 2040 bp

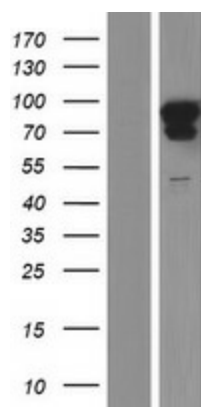
OTI Disclaimer: The molecular sequence of this clone aligns with the gene accession number as a point of reference only. However, individual transcript sequences of the same gene can differ through naturally occurring variations (e.g. polymorphisms), each with its own valid existence. This clone is substantially in agreement with the reference, but a complete review of all prevailing variants is recommended prior to use. [More info](#)

OTI Annotation: This clone was engineered to express the complete ORF with an expression tag. Expression varies depending on the nature of the gene.

Components:	The ORF clone is ion-exchange column purified and shipped in a 2D barcoded Matrix tube containing 10ug of transfection-ready, dried plasmid DNA (reconstitute with 100 ul of water).
Reconstitution Method:	<ol style="list-style-type: none"> 1. Centrifuge at 5,000xg for 5min. 2. Carefully open the tube and add 100ul of sterile water to dissolve the DNA. 3. Close the tube and incubate for 10 minutes at room temperature. 4. Briefly vortex the tube and then do a quick spin (less than 5000xg) to concentrate the liquid at the bottom. 5. Store the suspended plasmid at -20°C. The DNA is stable for at least one year from date of shipping when stored at -20°C.
RefSeq:	<u>NM_001168467.2</u>
RefSeq ORF:	2043 bp
Locus ID:	256714
UniProt ID:	<u>Q96T17</u>
Cytogenetics:	Xp22.12
MW:	77.1 kDa

Product images:


Circular map for RC230420



Western blot validation of overexpression lysate (Cat# [LY433420]) using anti-DDK antibody (Cat# [TA50011-100]). Left: Cell lysates from untransfected HEK293T cells; Right: Cell lysates from HEK293T cells transfected with RC230420 using transfection reagent MegaTran 2.0 (Cat# [TT210002]).