

Product datasheet for **RC230419**

VIT (NM_001177969) Human Tagged ORF Clone

Product data:

| | |
|---------------------------|---|
| Product Type: | Expression Plasmids |
| Product Name: | VIT (NM_001177969) Human Tagged ORF Clone |
| Tag: | Myc-DDK |
| Symbol: | VIT |
| Synonyms: | VIT1 |
| Mammalian Cell Selection: | Neomycin |
| Vector: | pCMV6-Entry (PS100001) |
| E. coli Selection: | Kanamycin (25 ug/mL) |



[View online »](#)

ORF Nucleotide
Sequence:

>RC230419 representing NM_001177969
Red=Cloning site Blue=ORF Green=Tags(s)

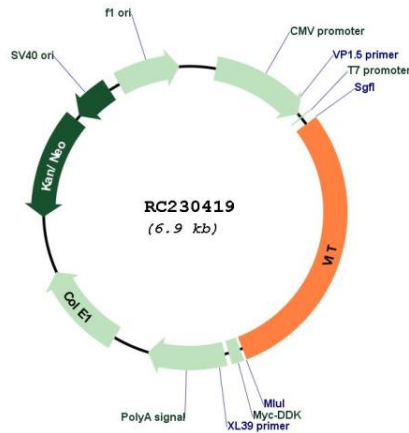
TTTTGTAATACGACTCACTATAGGGCGGCCGGGAATTCGTCGACTGGATCCGGTACCGAGGAGATCTGCC
GCC**CGCATCGCC**

ATGAGGACTGTTGTTCTCACTATGAAGGCATCTGTTATTGAAATGTTCTTGTGTTTCTGTTGCTGGTACTGGAG
TACATTTAAACAAAGAAACGGCAAAGAAGATTAAGGCCCAAGTTCAGTGTGCCTCAGATCAACTGCGA
TGTCAAAGCCGGAAAGATCATCGATCCTGAGTTTATTGTGAAATGTCCAGCAGGATGCCAAGACCCAAA
TACCATGTTTATGGCACTGACGTGTATGCATCCTACTCCAGTGTGTGGCGCTGCCGTACACAGTGGTG
TGCTTGATAATTCAGGAGGGAAAATACTTGTTCGGAAGTTGCTGGACAGTCTGGTTACAAAGGGAGTTA
TTCCAACGGTGTCCAATCGTTATCCCTACCACGATGGAGAGAATCCTTTATCGTCTTAGAAAAGTAAACCC
AAAAAGGTGTAACTACCCATCAGCTCTTACATACTCATCATCGAAAAGTCCAGCTGCCAAGCAGGTG
AGACCACAAAAGCCTATCAGAGGCCACCTATTCCAGGGACAACGCACAGCCGGTCACTCTGATGCAGCT
TCTGGCTGTCACTGTAGCTGTGGCCACCCACCACCTTGCCAAGGCCATCCCCTTCTGCTGCTTCTACC
ACCAGCATCCCCAGACCACAATCAGTGGCCACAGGAGCCAGGAGATGGATCTCTGGTCCACTGCCACCT
ACACAAGCAGCCAAAACAGGCCAGAGCTGATCCAGGTATCCAAAGGCAAGATCCTTCAGGAGCTGCCTT
CCAGAAACCTGTTGGAGCGGATGTGAGCCTGGGACTTGTCCAAAAGAAGATTGAGCACACAGTCTTTG
GAGCCAGTATCCCTGGGAGATCCAAACTGCAAAATTGACTTGTGCTTTTTAATTGATGGGAGCACCAGCA
TTGGCAAACGGCGATTCCGAATCCAGAAGCAGCTCCTGGCTGATGTTGCCAAGCTTTGACATTGGCCC
TGCCGGTCCACTGATGGGTGTTGTCAGTATGGAGACAACCTGCTACTCACTTTAACCTCAAGACACAC
ACGAATTTCTGAGATCTGAAGACAGCCATAGAGAAAATTACTCAGAGAGGAGGACTTTCTAATGTAGGTC
GGGCCATCTCCTTTGTGACCAAGAACTTCTTTTCCAAGCCAATGGAAACAGAAGCGGGGCTCCCAATGT
GGTGGTGGTGTGGTGGATGGCTGGCCACGGACAAAAGTGGAGGAGGCTTCAAGACTTGGCAGAGAGTCA
GGAATCAACATTTTCTTATCACCATTGAAGGTGCTGCTGAAAATGAGAAGCAGTATGTGGTGGAGCCCA
ACTTTGAAAACAAGGCCGTGTGAGAACAAACGGCTTCTACTCGTCCACGTGCAGAGCTGGTTTGGCCT
CCACAAGACCCTGCAGCCTCTGGTGAAGCGGGTCTGCGACTGACCGCCTGGCCTGCAGCAAGACCTGC
TTGAACTCGGCTGACATTGGCTTCGTCATCGACGGCTCCAGCAGTGTGGGACGGGCAACTTCCGCACCG
TCCTCCAGTTTGTGACCAACCTCACAAAGAGTTTGTAGATTTCCGACACGGACACGCGCATCGGGGCCGT
GCAGTACACCTACGAACAGCGGCTGGAGTTTGGGTTGACAAGTACAGCAGCAAGCCTGACATCCTCAAC
GCCATCAAGAGGGTGGGCTACTGGAGTGGTGGCACCAGCACGGGGCTGCCATCAACTTCGCCCTGGAGC
AGCTTTCAAGAAGTCCAAGCCCAACAAGAGGAAGTTAATGATCCTCATACCGACGGGAGGTCTACGA
CGACGTCCGGATCCCAGCATGGCTGCCATCTGAAGGGAGTGTACCTATGCGATAGGCGTTGCCTGG
GCTGCCAAGAGGAGCTAGAAGTCATTGCCACTCACCCGCCAGAGACCCTCTTCTTTGTGGACGAGT
TTGACAACCTCCATCAGTATGTCCCCAGGATCATCCAGAACATTTGTACAGAGTTCAACTCACAGCCTCG
GAAC

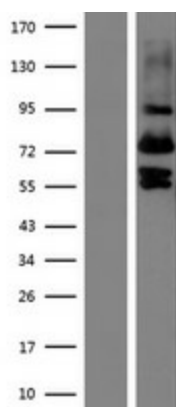
ACGCGTACGCGGCCGCTCGAGCAGAACTCATCTCAGAAGAGGATCTGGCAGCAATGATATCCTGGATT
ACAAGGATGACGACGATAAGGTTTAA

- Components:** The ORF clone is ion-exchange column purified and shipped in a 2D barcoded Matrix tube containing 10ug of transfection-ready, dried plasmid DNA (reconstitute with 100 ul of water).
- Reconstitution Method:**
1. Centrifuge at 5,000xg for 5min.
 2. Carefully open the tube and add 100ul of sterile water to dissolve the DNA.
 3. Close the tube and incubate for 10 minutes at room temperature.
 4. Briefly vortex the tube and then do a quick spin (less than 5000xg) to concentrate the liquid at the bottom.
 5. Store the suspended plasmid at -20°C. The DNA is stable for at least one year from date of shipping when stored at -20°C.
- RefSeq:** [NM_001177969.1](#), [NP_001171440.1](#)
- RefSeq ORF:** 2037 bp
- Locus ID:** 5212
- UniProt ID:** [Q6UXI7](#)
- Cytogenetics:** 2p22.2
- Protein Families:** Secreted Protein
- MW:** 74.4 kDa
- Gene Summary:** This gene encodes an extracellular matrix (ECM) protein. The protein may be associated with cell adhesion and migration. High levels of expression of the protein in specific parts of the brain suggest its likely role in neural development. [provided by RefSeq, Jun 2016]

Product images:



Circular map for RC230419



Western blot validation of overexpression lysate (Cat# [LY433419]) using anti-DDK antibody (Cat# [TA50011-100]). Left: Cell lysates from untransfected HEK293T cells; Right: Cell lysates from HEK293T cells transfected with RC230419 using transfection reagent MegaTran 2.0 (Cat# [TT210002]).