

## Product datasheet for **RC230413**

### **TTC39B (NM\_001168340) Human Tagged ORF Clone**

#### **Product data:**

Product Type:	Expression Plasmids
Product Name:	TTC39B (NM_001168340) Human Tagged ORF Clone
Tag:	Myc-DDK
Symbol:	TTC39B
Synonyms:	C9orf52
Mammalian Cell Selection:	Neomycin
Vector:	pCMV6-Entry (PS100001)
E. coli Selection:	Kanamycin (25 ug/mL)



[View online »](#)

ORF Nucleotide  
Sequence:

>RC230413 representing NM\_001168340  
Red=Cloning site Blue=ORF Green=Tags(s)

TTTTGTAATACGACTCACTATAGGGCGGCCGGGAATTCGTCGACTGGATCCGGTACCGAGGAGATCTGCC  
GCCGCGATCGCC

ATGGATGTCTGTGCTGGCCTGCCGCTCCGGGGCGGGGAAATCGAGTAGCTGCACTCAGGCCCGCCCGA  
GACCCGGAGGGAGCGCCGGCCGCTCCCCTTTGCGCTCCTTTGCGCTGGGCTGAGCCAGAGCCGAGAGC  
AGGAGTCGGCTCTGAGTCCCTGCTTGGTTTTGGGTGGCAGCAGCCAGAGGAGGAATATGGCGCTCTTA  
GGCAGCCGAGCGGAGCTGGAAGCGGACGAGGACGTTTTCGAAGATGCCTTGAAACCATCTCAATATCTT  
CTCACTCAGATATGGCAACAAGCAGCCTTCACTTTGCATCATGTGATACACAACAGGCGCCAGACAGCG  
CGGAGCGTCTACTGTCAGCAGTTCATCATCAACCAAGGTGGATCTCAAGAGTGGCCTCGAAGAATGTGCT  
GTGGCATTGAACTATTTCTAAGCAACAAATTTACAGACGCTTAGAATTGCTTCGCCCCGGGCTAAGG  
AGAGTATGTACCATGCCTTGGGCTACAGTACCATTGTGGTGTGCAGGCTGTCTGACCTTCGAGCAACA  
GGACATCCAGAACGGCATTCTGCCATGAAGGACGCTTTACAAACCTGCCAAAAATACAGGAAAAAATAC  
ACAGTTGTAGAATCTTTCTCAAGTCTTCTTTCTAGAGGATCCCTGGAGCAACTGAGTGAAGAGGAAATGC  
ATGCTGAAATCTGTTATGCCGAGTGTCTCTACAGAAAGCTGCACTCACGTTTGTGCAGGATGAAATAT  
GATCAACTTCATCAAAGGTGGACTCAAAATTAGAACAAGTTACCAAAATATATAAAGAATGTCTTTCTATC  
CTGCATGAAATTCAGAAGAACAACTTCAGCAGGAATCTTCTATGAGTTTGAAGGGGTGTCAAGCTTG  
GCAGTGGGGCCTTAATTTGATGCTGTCCCTTTACCAGCAAGGATTATCAGACTACTAGAATTTATTGG  
ATTTCTGGGAATAGGGAGTTGGCCCTCTGCAGTTACGTGAAGGTGCTTCAGGAAGGAGCATGAGGTCT  
GCACTGTGCTGCTTAACCATCTTAGCTTTTCACTTACATCTCCCTAATACTTGGTACAGGAGAAGTGA  
ATGTTGCGGAAGCAGAGCGTCTCCTGGCACCTTCCCTCCAGCAGTTTCCAAATGTACGCTCAGTATTTCA  
AAGTGCACAAGAAGTATTTCAAAAATGCATTTTCAGTTCAAGAAGAATGGAAACAGTTTCACCATCTCTGC  
TACTGGGAGCTAATGTGGATTAATGTTTTCCAACAAAAGTGGATGCAGGCATATTACTATTCAGATCTGC  
TTTGCAAAGAGAGTAAATGGTCCAAGGCACTTATGTGTTCTTGAAAGCAGCAATTTTGGATGCTTCC  
AGAGGAGGATGTAGTAGCAACGAATGAGAATGTGGTAACTTTATTCAGACAGGTGGACAGCTTGAAGCAG  
AGAATTGCCGGGAAATCTATCCCTACTGAGAAGTTTGTGTGAGGAAGGCTCGGCCTTACTCCGCCTCCT  
TACCTGCACCTGTGAAGCTCATTTACCTGCCCTGAAATGATGTATGTCTGGAATGGTTTTTCAATAGT  
GAGCAAAAAGAAAAGACCTTTCTGAAAATCTGTTAGTAACTGTTGAAAAAGCTGAGGCAGCTTTACAAAGT  
CAAAATTTAACAGCTTCTCTGTGGATGATGAGTGCTTAGTGAAGTTACTTAAAGGATGTTGCCTCAAGA  
ACTTACAGCGGCCCTTGCAAGCTGAACTATGTTACAATCATGTTGTGAAAGTGAAGGCTACTGAAGTA  
TGACCACTACCTAGTGCCGTTCACTCTATTTGAATTGGCATCTTTGTATAAAAGCCAGGGGGAAATTTGAC  
AAGGCCATAAAGTTCTAGAAACTGCAAGGAACAACACTACAAAGATTACTCCCTGGAGTCCAGACTACACT  
TCAGAATTCAGGCAGCTCTTACCTCTGGAGAAAACCTTCTCAGAT

ACGCGTACGCGGCCGCTCGAGCAGAACTCATCTCAGAAGAGGATCTGGCAGCAATGATATCCTGGATT  
ACAAGGATGACGACGATAAGGTTTAA

**Protein Sequence:** >RC230413 representing NM\_001168340  
 Red=Cloning site Green=Tags(s)

```
MDAVLACRLRGRGNRVAALRPRPRPGGSAGPSPFALLCAGLSPEPRAGVGSEFPWFLLGGSSQRRMALL
GSRAELEADEDVFEDALETISISSHSDMATSSLHFASCDTQQAPRQRGASTVSSSSSTKVDLKSGLLECA
VALNLFSLSNKFTDALELLRPWAKESMYHALGYSTIVVLQAVLTFEQQDIQNGISAMKDALQTCQKYRKKY
TVVESFSSLLSRGSLEQLSEEEMHAEICYAECLLQKAALTFVQDENMINF IKGGLKIRTSYQIYKECLSI
LHEIQKNKLQQEFFFYEFEGGVKLGSGAFNMLSLLPARIIRLLEF IGFSGNRELGLLQLREGASGRSMRS
ALCCLTILAFHTYISLILGTGEVNVAEERLLAPFLQQFPNVRVVFQSAQEVFQKCSVQEWEKQFHHLIC
YWELMWINVFQQNMQAYYSDDLCKESKWSKATYVFLKAAILSMLPEEDVVATNENVTLFRQVDSLKQ
RIAGKSIPTEKFAVRKARRYSASLPAPVKLILPALEMMYVWNGFSIVSKRKDLSENLLVVEKAEAAALQS
QNFNSFSVDDECLVKKLKGCKLKNLQRPLQAELCYNHVVESEKLLKYDHYLVPFTL FELASLYKSQGEID
KAIKFLETARNNYKDYSLESRLHFRIQAALHLWRKPSSD
```

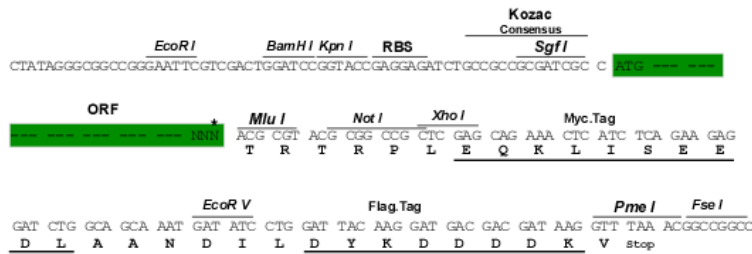
TRTRPLEQKLISEEDLAANDILDYKDDDDKV

**Chromatograms:** [https://cdn.origene.com/chromatograms/mk8072\\_b12.zip](https://cdn.origene.com/chromatograms/mk8072_b12.zip)

**Restriction Sites:** SgfI-MluI

**Cloning Scheme:**

Cloning sites used for ORF Shuttling:



\* The last codon before the Stop codon of the ORF

**ACCN:** NM\_001168340

**ORF Size:** 2007 bp

**OTI Disclaimer:** The molecular sequence of this clone aligns with the gene accession number as a point of reference only. However, individual transcript sequences of the same gene can differ through naturally occurring variations (e.g. polymorphisms), each with its own valid existence. This clone is substantially in agreement with the reference, but a complete review of all prevailing variants is recommended prior to use. [More info](#)

**OTI Annotation:** This clone was engineered to express the complete ORF with an expression tag. Expression varies depending on the nature of the gene.

**Components:** The ORF clone is ion-exchange column purified and shipped in a 2D barcoded Matrix tube containing 10ug of transfection-ready, dried plasmid DNA (reconstitute with 100 ul of water).

**Reconstitution Method:**

1. Centrifuge at 5,000xg for 5min.
2. Carefully open the tube and add 100ul of sterile water to dissolve the DNA.
3. Close the tube and incubate for 10 minutes at room temperature.
4. Briefly vortex the tube and then do a quick spin (less than 5000xg) to concentrate the liquid at the bottom.
5. Store the suspended plasmid at -20°C. The DNA is stable for at least one year from date of shipping when stored at -20°C.

**RefSeq:** [NM\\_001168340.1](#), [NP\\_001161812.1](#)

**RefSeq ORF:** 2010 bp

**Locus ID:** 158219

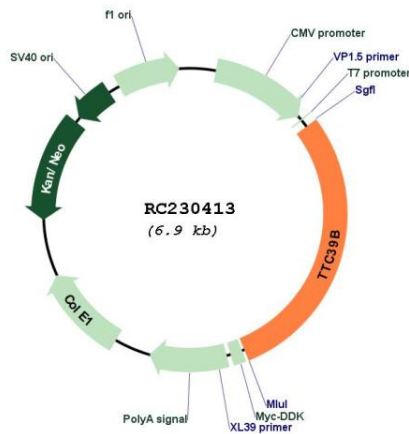
**UniProt ID:** [Q5VTQ0](#)

**Cytogenetics:** 9p22.3

**MW:** 75.9 kDa

**Gene Summary:** Regulates high density lipoprotein (HDL) cholesterol metabolism by promoting the ubiquitination and degradation of the oxysterols receptors LXR (NR1H2 and NR1H3).  
[UniProtKB/Swiss-Prot Function]

### Product images:



Circular map for RC230413