

Product datasheet for **RC230412**

SLC44A4 (NM_001178044) Human Tagged ORF Clone

Product data:

Product Type:	Expression Plasmids
Product Name:	SLC44A4 (NM_001178044) Human Tagged ORF Clone
Tag:	Myc-DDK
Symbol:	SLC44A4
Synonyms:	C6orf29; CTL4; DFNA72; hTPPT1; NG22; TPPT
Mammalian Cell Selection:	Neomycin
Vector:	pCMV6-Entry (PS100001)
E. coli Selection:	Kanamycin (25 ug/mL)



[View online »](#)

ORF Nucleotide
Sequence:

>RC230412 representing NM_001178044
 Red=Cloning site Blue=ORF Green=Tags(s)

TTTTGTAATACGACTCACTATAGGGCGGCCGGAATTCGTCGACTGGATCCGGTACCGAGGAGATCTGCC
 GCC**CGGATCGCC**

ATGGGGGAAAGCAGCGGGACGAGGATGACGAGGCTACGGGAAGCCAGTCAAATACGACCCTCCTTTC
 GAGGCCCCATCAAGAACAGAAGCTGCACAGATGCATCTGCTGCGTCCTTCTCTGCTCTTCATTCTAGG
 TTACATCGTGGTGGGATTGTGGCTGGTTGTATGGAGACCCCGCAAGTCCTCTACCCAGGAACTCT
 ACTGGGGCTACTGTGGCATGGGGGAGAAAGATAAGCCGTATCTCTGTACTTCAACATCTTCAGCT
 GCATCCTGTCCAGCAACATCATCTCAGTTGCTGAGAACGGCTACAGTGCCCCACACCCAGACGGTGAT
 CACAAGCCTGCAACAGGAACTCTGCCCCAGTTTCTCTCCCTCTGCTCCAGCTCTGGGGCGCTGCTTT
 CCATGGACCAACGTTACTCCACCGGCGCTCCAGGGATACCAATGACACCACCACAGCAGGGGATCA
 GCGGTCTTATTGACAGCCTCAATGCCGAGACATCAGTGTTAAGATCTTTGAAGATTTGCCAGTCTGT
 GTATTGGATTCTTGTGCCCTGGGGTGGCTCTGGTCTTGAGCCTACTGTTTATCTTGTCTTGCAGCTG
 GTGGCTGGGCCCCGTGGTCTGGTCTGATCCTGGGAGTGTGGGCGTGTGGCATACGGCATCTACTACT
 GCTGGGAGGAGTACCGAGTGTGCGGGACAAGGGCGCCTCCATCTCCAGCTGGGTTTACCACCAACCT
 CAGTGCCCTACCAGAGCGTGCAGGAGACCTGGCTGGCCGCCTGATCGTGTGGCGGTGCTTGAAGCCATC
 CTGCTGCTGATGCTCATCTTCTGCGGCAGCGGATTTCGTATTGCCATCGCCCTCTGAAGGAGGCCAGCA
 AGGCTGTGGGACAGATGATGTCTACCATGTTCTACCCACTGGTCACTTTGTCTCTCTCATCTGCAT
 TGCCTACTGGCCATGACTGCTGTACCTGGCTACATCGGGCAACCCAGTATGTGCTCTGGGCATCC
 AACATCAGCTCCCCGGCTGTGAGAAAGTGCCAATAAATACATCATGCAACCCACGGCCACCTTGTGA
 ACTCCTCGTCCCAGGGCTGATGTGCGTCTCCAGGGCTACTCATCCAAGGCCTAATCCAACGTTCTGT
 CTTCAATCTGCAATCTATGGGGTCTGGGGCTCTTCTGGACCCTTAAGTGGTACTGGCCCTGGGCCAA
 TGGCTCTCGCTGGAGCCTTTCCTCTCTACTGGGCTTCCACAAGCCCCAGGACATCCCTACCTTCC
 CCTTAATCTCTGCCTTATCCGCACACTCCGTTACCACACTGGGTATTGGCATTGGAGCCCTCATCTCT
 GACCCCTGTGAGATAGCCCGGTCTCTGGAGTATATTGACCACAAGCTCAGAGGAGTGCAGAACCTT
 GTAGCCCCTGCATCATGTGCTGTTTCAAGTGTGCTGCTGCTGGTGTCTGGAAAAATTTATCAAGTCTTAA
 ACCGCAATGCATACATCATGATCGCCATCTACGGGAAGAATTTCTGTGTCTCAGCCAAAAATGCGTTCAT
 GCTACTCATGCGAAACATTGTCAGGGTGGTCTGCTGGACAAAGTACAGACCTGCTGCTGTTCTTTGGG
 AAGCTGCTGGTGGTGGAGGGCTGGGGTCTGTCTTCTTTTTTTCTCCGGTGCATCCCGGGGCTGG
 GTAAAGACTTTAAGAGCCCCACCTCAACTATTACTGGCTGCCATCATGACCTCCATCCTGGGGGCTTA
 TGTTCATGCCAGCGGCTTCTCAGCGTTTTTCGGCATGTGTGGACACGCTTCTCTCTGCTTCTGGAA
 GACCTGGAGCGGAACAACGGCTCCCTGGACCGCCCTACTACATGTCCAAGACCTTCTAAAGATTCTGG
 GCAAGAAGAACGAGGCGCCCCGGACAACAAGAAGAGGAAGAAG

ACGCGTACGCGGGCCGCTCGAGCAGAACTCATCTCAGAAGAGGATCTGGCAGCAAATGATATCCTGGATT
 ACAAGGATGACGACGATAAGGTTTAA

Protein Sequence: >RC230412 representing NM_001178044
 Red=Cloning site Green=Tags(s)

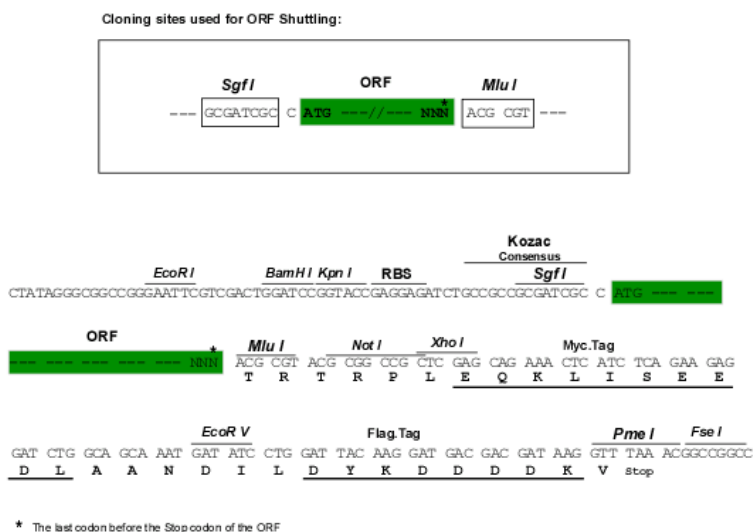
MGGKQRDEDEAYGKPKYDPSFRGPIKNRSCDVICCVLFLF ILGYIVVGIVAWLYGDPQVLYPRNS
 TGAYCGMGENKDKPYLLYFNIFSCILSSNIISVAENGLQCPTPQTVITSLQQELCPSFLLPSAPALGRFC
 PWTNVTTPALPGITNDTTIQGGISGLIDSLNARDISVKIFEDFAQSWYWLVALGVALVLSLLFILLRL
 VAGPLVLVILGVLGVLAYGIYCWEEYRVL RDKGASISQLGFTTNLSAYQSVQETWLAALIVLAVLEAI
 LLLMLIFLRQIRIAIALLLKEASKAVGQMMSTMFYPLVTFVLLLCIAYWAMTALYLATSGQPQYVLWAS
 NISSPGCEKVPINTSCNPTAHLVNSSCPGLMCFVQGYSSKGLIQRSVFNLQIYGVGLFWTLNWVLALGQ
 CVLAGAFASFYWAFHKPQDIPTFPLISAFIRTLRYHTGSLAFGALILTLVQIARVILEYIDHKLGRVQNP
 VARCIMCCFKCLWCLEKFIKFLNRNAYIMIAIYGKNFCVSAKNAFMLLMRNIVRVVLDKVTDLFFF
 KLLVVGVGVL SFFFFSGRIPGLGKDFKSPHLNYYWLPIMTSILGAYVIASGFFSVFGMCDTLFLCFLE
 DLERNNGSLDRPYYSKSLKILGKKNEAPPDNKKRKK

TRTRPLEQKLI SEEDLAANDILDYKDDDDKV

Chromatograms: https://cdn.origene.com/chromatograms/mk8072_b07.zip

Restriction Sites: SgfI-MluI

Cloning Scheme:



ACCN: NM_001178044

ORF Size: 2004 bp

OTI Disclaimer: The molecular sequence of this clone aligns with the gene accession number as a point of reference only. However, individual transcript sequences of the same gene can differ through naturally occurring variations (e.g. polymorphisms), each with its own valid existence. This clone is substantially in agreement with the reference, but a complete review of all prevailing variants is recommended prior to use. [More info](#)

OTI Annotation: This clone was engineered to express the complete ORF with an expression tag. Expression varies depending on the nature of the gene.

Components: The ORF clone is ion-exchange column purified and shipped in a 2D barcoded Matrix tube containing 10ug of transfection-ready, dried plasmid DNA (reconstitute with 100 ul of water).

Reconstitution Method:

1. Centrifuge at 5,000xg for 5min.
2. Carefully open the tube and add 100ul of sterile water to dissolve the DNA.
3. Close the tube and incubate for 10 minutes at room temperature.
4. Briefly vortex the tube and then do a quick spin (less than 5000xg) to concentrate the liquid at the bottom.
5. Store the suspended plasmid at -20°C. The DNA is stable for at least one year from date of shipping when stored at -20°C.

RefSeq: [NM_001178044.1](#), [NP_001171515.1](#)

RefSeq ORF: 2007 bp

Locus ID: 80736

UniProt ID: [Q53GD3](#)

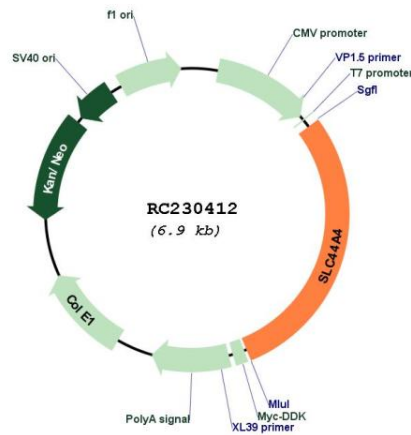
Cytogenetics: 6p21.33

Protein Families: Transmembrane

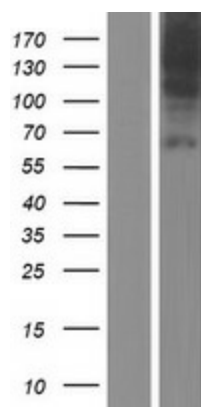
MW: 75 kDa

Gene Summary: The protein encoded by this gene may be a sodium-dependent transmembrane transport protein involved in the uptake of choline by cholinergic neurons. Defects in this gene can cause sialidosis, a lysosomal storage disease. Three transcript variants encoding different isoforms have been found for this gene. [provided by RefSeq, May 2010]

Product images:



Circular map for RC230412



Western blot validation of overexpression lysate (Cat# [LY433412]) using anti-DDK antibody (Cat# [TA50011-100]). Left: Cell lysates from untransfected HEK293T cells; Right: Cell lysates from HEK293T cells transfected with RC230412 using transfection reagent MegaTran 2.0 (Cat# [TT210002]).