

Product datasheet for **RC230406**

CPXM (CPXM1) (NM_001184699) Human Tagged ORF Clone

Product data:

Product Type:	Expression Plasmids
Product Name:	CPXM (CPXM1) (NM_001184699) Human Tagged ORF Clone
Tag:	Myc-DDK
Symbol:	CPXM
Synonyms:	CPX1; CPXM
Mammalian Cell Selection:	Neomycin
Vector:	pCMV6-Entry (PS100001)
E. coli Selection:	Kanamycin (25 ug/mL)



[View online »](#)

ORF Nucleotide
Sequence:

>RC230406 representing NM_001184699
Red=Cloning site Blue=ORF Green=Tags(s)

TTTTGTAATACGACTCACTATAGGGCGGCCGGGAATTCGTCGACTGGATCCGGTACCGAGGAGATCTGCC
GCCGCGATCGCC

ATGTGGGGGCTCCTGCTCGCCCTGGCCGCTTCGCGCCGGCCGTCGGCCCGGCTCTGGGGCGCCAGGA
ACTCGGTGCTGGGCTCGCGCAGCCGGGACCACCAAGGTCCCAGGCTCGACCCCGGCCCTGCATAGCAG
CCCGGCACAGCCCGCGGAGACAGCTAACGGGACCTCAGAACAGCATGTCCGGATTCGAGTCATCAAG
AAGAAAAAGTCAATTATGAAGAAGCGGAAGAAGCTAACTCTAACTCGCCCCACCCCACTGGTGACTGCCG
GGCCCTTGTGACCCCACTCCAGCAGGGACCCTCGACCCGCTGAGAAACAAGAAACAGGCTGTCTCC
TTTGGTCTGGAGTCCCTGCGAGTTTCAGATAGCCGGCTTGAGGCATCCAGCAGCCAGTCCCTTGGTCTT
GGACCACACCGAGGACGGCTCAACATTCAGTCAGGCTGGAGGACGGCGATCTATATGATGGAGCCTGGT
GTGCTGAGGAGCAGGACCGCATCCATGGTTTCAGGTGGACGCTGGGCACCCACCCGCTTCTCGGGTGT
TATCACACAGGGCAGAACTCTGTCTGGAGGTATGACTGGGTACATCATACAAGTCCAGTTCAGCAAT
GACAGTCGGACCTGGTGGGAAGTAGGAACCACAGCAGTGGGATGGACGCAATTTCTGCCAATTCAG
ACCCAGAAACTCCAGTGCTGAACCTCCTGCCGGAGCCCAAGTGGCCCGCTTCATTGCGCTGCTGCCCA
GACCTGGCTCCAGGGAGGCGCGCCTTGCCCTCCGGGCAGAGATCCTGGCCTGCCAGTCTCAGACCCCAAT
GACCTATTCCTTGAGGCCCTGCGTCCGGATCCTCTGACCCTCTAGACTTTCAGCATCACAATTACAAGG
CCATGAGGAAGCTGATGAAGCAGGTACAAGAGCAATGCCCAACATCACCCGCATCTACAGCATTGGGAA
GAGCTACCAGGGCCTGAAGCTGTATGTGATGGAATGTCGGACAAGCCTGGGGAGCATGAGCTGGGGGAG
CCTGAGGTGCGCTACGTGGTGGCATGCATGGGAACGAGGCCCTGGGGCGGGAGTTGCTTCTGCTCCTGA
TGCAGTTCCTGTGCCATGAGTTCCTGCGAGGGAACCCACGGGTGACCCGGCTGCTCTGAGATGCGCAT
TCACCTGCTGCCCTCCATGAACCTGATGGCTATGAGATCGCCTACCACCGGGTTTCAGAGCTGGTGGGC
TGGGCCGAGGGCCGCTGGAACAACCAGAGCATCGATCTTAACCATAATTTTGTGACCTCAACACACCAC
TGTGGGAAGCACAGGACGATGGGAAGGTGCCCCACATCGTCCCCAACCATCACCTGCCATTGCCACTTA
CTACACCTGCCCAATGCCACCGTGGCTCCTGAAACGCGGGCAGTAATCAAGTGGATGAAGCGGATCCCC
TTTGTGCTAAGTGCCAACTCCACGGGGCATGAATGACTTCAGTACCTACACACCAACTGCTTTGAGG
TCACTGTGGAGCTGTCTGTGACAAGTTCCTCACGAGAATGAATTGCCCCAGGAGTGGGAGAACAACAA
AGACGCCCTCCTACCTACCTGGAGCAGGTGCGCATGGGCATTGCAGGAGTGGTGGGACAGGACACG
GAGCTTGGGATTGCTGACGCTGTCAATGCCGTGGATGGGATTAACCATGACGTGACCACGGCGTGGGGCG
GGGATTATTGGCGTCTGCTGACCCAGGGGACTACATGGTACTGCCAGTCCCGAGGGCTACCATTCAGT
GACACGGAAGTGTGGGTACCTTTGAAGAGGGCCCTTCCCCTGCAATTTCTGTGCTCACCAAGACTCCC
AAACAGAGGCTGCGCGAGCTGCTGGCAGCTGGGGCCAAGGTGCCCCGGACCTTCGACGGCGCTGGAGC
GGCTAAGGGGACAGAAGGAT

ACGCGTACGCGGCCGCTCGAGCAGAACTCATCTCAGAAGAGGATCTGGCAGCAATGATATCCTGGATT
ACAAGGATGACGACGATAAGGTTTAA

Reconstitution Method:

1. Centrifuge at 5,000xg for 5min.
2. Carefully open the tube and add 100ul of sterile water to dissolve the DNA.
3. Close the tube and incubate for 10 minutes at room temperature.
4. Briefly vortex the tube and then do a quick spin (less than 5000xg) to concentrate the liquid at the bottom.
5. Store the suspended plasmid at -20°C. The DNA is stable for at least one year from date of shipping when stored at -20°C.

RefSeq: [NM_001184699.2](#)

RefSeq ORF: 1983 bp

Locus ID: 56265

UniProt ID: [Q96SM3](#)

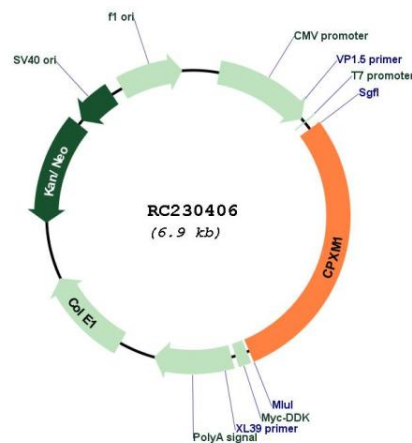
Cytogenetics: 20p13

Protein Families: Druggable Genome, Protease, Secreted Protein

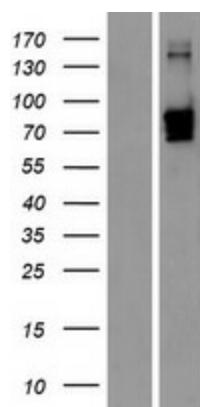
MW: 73.9 kDa

Gene Summary: This gene likely encodes a member of the carboxypeptidase family of proteins. Cloning of a comparable locus in mouse indicates that the encoded protein contains a discoidin domain and a carboxypeptidase domain, but the protein appears to lack residues necessary for carboxypeptidase activity.[provided by RefSeq, May 2010]

Product images:



Circular map for RC230406



Western blot validation of overexpression lysate (Cat# [LY433406]) using anti-DDK antibody (Cat# [TA50011-100]). Left: Cell lysates from untransfected HEK293T cells; Right: Cell lysates from HEK293T cells transfected with RC230406 using transfection reagent MegaTran 2.0 (Cat# [TT210002]).