

Product datasheet for **RC230398**

PARP7 (TIPARP) (NM_001184717) Human Tagged ORF Clone

Product data:

Product Type:	Expression Plasmids
Product Name:	PARP7 (TIPARP) (NM_001184717) Human Tagged ORF Clone
Tag:	Myc-DDK
Symbol:	PARP7
Synonyms:	ARTD14; PARP7; pART14
Mammalian Cell Selection:	Neomycin
Vector:	pCMV6-Entry (PS100001)
E. coli Selection:	Kanamycin (25 ug/mL)



[View online »](#)

**ORF Nucleotide
Sequence:**

>RC230398 representing NM_001184717
 Red=Cloning site Blue=ORF Green=Tags(s)

TTTTGTAATACGACTCACTATAGGGCGGCCGGAATTCGTCGACTGGATCCGGTACCGAGGAGATCTGCC
 GCC**CGGATCGCC**

ATGGAAATGGAAACCACCGAACCTGAGCCAGACTGTGTAGTGCAGCCTCCCTCTCTCTGATGACTTTT
 CATGCCAAATGAGACTCTCTGAGAAGATCACTCCATTGAAGACTTGTTTTAAGAAAAAGGATCAGAAAAAG
 ATTGGGAACTGGAACCTTGAGGTCTTTGAGGCCAATATTAACACTCTTCTAGAATCTGGCTCACTTGAT
 GGGGTTTTTAGATCTAGGAACCAGAGTACAGATGAGAACAGCTTACATGAACCTATGATGAAGAAAGCCA
 TGGAAATCAATTCATCATGCCACCAGCAGAAAAAATATGTCTGTTCTGATTCTGATAGGACAAATGT
 TGGGGACCAGATACCGGAAGCCCATCCTCCACTGAAGCTCCAGAACGAGTGGTTCCAATCCAAGATCAC
 AGCTTTCCATCAGAAACCCTCAGTGGGACGGTGGCAGATTCCACACCAGCTCACTCCAGACTGATCTTT
 TGCACCCAGTTTCAAGTGTCTTCTACTAGTCTGACTGCTTAGACAAAGTCATAGATTATGTTCCAGG
 CTTTTTCAAGAAAACAGTTTTACAATCCAATACATTCTGGACACCAGTGATAAGCTGAGTACTGAGCTC
 TTTCCAGGACAAAAGTGAAGAGGCTTCCCTTGACCTCGTGTGGAGCTGGTGAACCAAGTTGCAAGTACCACA
 CTCACCAAGAGAACGGAATTGAAATTTGCATGGACTTTCTGCAAGGCACTTGATTTATGGCAGGGATTG
 TTTGAAGCACCACACTGTCTTGCCATATCATTGGCAGATCAAAAGGACAACACTACTCAAAAGTGGCAGAGT
 GTATTCATGATTCTCAGGAGCACTTGGAAAGATTTTACTGTAACCCAGAAAAATGATAGAATGAGAATGA
 AGTATGGAGGACAAGAATTTTGGGCAGATTTGAATGCCATGAACGTGTATGAAACAACCTGAATTTGACCA
 ACTACGAAGGCTGTCCACACCACCCTCTAGCAATGTCAACTCTATTTACCACACAGTCTGGAAATTTCTC
 TGTAGGGACCCTTTGGATGGAGAGAGTATCCCGAGTCTGTTCATTCGATTGATTGAAGAAGCCAACCTC
 GGGTCTGAAAGAGGTTTCGATTTATGATGTGGAATAACCACTACATCCTCCACAATTCATTCTTCAGGAG
 AGAGATAAAAAGGAGACCCTCTCCGCTCCTGTTTTATACTGCTTCCATATTTACAGACACTTGGTGGG
 GTTCCACACAAGCTCCTCCACCTCTTGAAGCAACTTCATCATCACAAATTTATCTGCCAGATGGGGTCA
 CTTCAGCAAACTTTACCTGAAACTTGGGTTTATATGCATCCATCTCAGGACTTCATCCAAGTCCCTGT
 TTCTGCAGAGGATAAAAGTTATCGGATCATTTACAATCTTTTTCATAAGACTGTGCCTGAGTTTAAATAC
 AGAATTTTGCAGATATTGAGAGTCCAAAACCAGTTTCTTTGGGAGAAATATAAAAGGAAAAAGGAATATA
 TGAACAGGAAAAATGTTTGGCCGTGACAGGATAATAAATGAGAGACATTTATTTTCATGGAACATCCCAGGA
 TGTGGTAGATGGAATCTGCAAACACAACCTTGACCCTCGAGTCTGTGGAAGCATGCTACAATGTTTGA
 CAAGGCAGTTATTTTCAAAGAAGGCAAGCTACTCTCAACTTTTCTAAGAAGTCTCCAAAGGAGTCC
 ACTTCATGTTTCTGGCCAAAGTCTGACGGCAGATACACAATGGGCAGTCATGGCATGAGAAGGCCCCC
 GCCAGTCAATCCTGGCAGTGTACCAGTACCTTTATGACTCTTGTGTGGATAATTTCTTTGAGCCTCAG
 ATTTTTGTCATTTTAAATGATGACCAGAGTTACCTTATTTTGTATCCAATATGAAGAAGTCAGTAAACA
 CTGTTTCCATT

ACGCGTACGCGGCCGCTCGAGCAGAACTCATCTCAGAAGAGGATCTGGCAGCAATGATATCCTGGATT
 ACAAGGATGACGACGATAAGGTTTAA

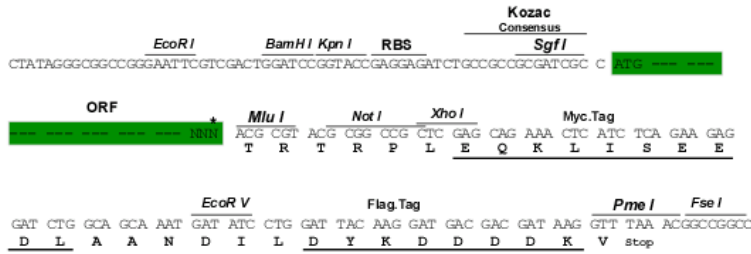
Protein Sequence: >RC230398 representing NM_001184717
Red=Cloning site Green=Tags(s)

MEMETTEPEPDCVVQPPSPDDFSCQMRLESEKITPLKTCFKKKDQKRLGTGTLRSLRPILNLTLESGLD
GVFRRNQSTDENSLHEPMMKKAMEINSSCPPAENMSVLIIPDRNTVGDQIPEAHPSTEAPERVVPIQDH
SFPSETLSGTVADSTPAHFQTDLLHPVSSDVPTSPDCLDKVIDYVPGIFQENSFTIQYILDTSDKLSTEL
FQDKSEEASLDLVFELVNQLQYHTHQENGIEICMDFLQGTCTIYGRDCLKHHTVLPYHWQIKRTTTQKWQS
VFNDSQEHLERFYCNPENDRMRMKYGGQEFWADLNAMNVYETTEFDQLRRLSTPPSSNVNSIYHTVWKF
CRDHFGEWREYPESVIRLIEEANSRGLKEVRFMMWNNHYILHNSFFRREIKRRPLFRSCFILLPYLQTLGG
VPTQAPPPLEATSSSQIICPDGVTSANFYPETWVYMHPSQDFIQVPVSAEDKSYRIIYNLFHKTVPFKY
RILQILRVQNQFLWEKYRKKKEYMNRKMFGRDRIINERHLFHGTSQDVVDGICKHNFDPVRCGKHATMFG
QGSYFAKKASYSHNF SKKSSKGVHFMFLAKVL TGRYTMGSHGMRPPVNPVPGSVTSDLYDSCVDNFFEPQ
IFVIFNDQSYYPYFVIQYEEVSNVTVSI

TRTRPLEQKLISEEDLANDILDYKDDDDKV

Chromatograms: https://cdn.origene.com/chromatograms/mk8104_a06.zip
Restriction Sites: SgfI-MluI
Cloning Scheme:

Cloning sites used for ORF Shuttling:



* The last codon before the Stop codon of the ORF

ACCN: NM_001184717

ORF Size: 1971 bp

OTI Disclaimer: The molecular sequence of this clone aligns with the gene accession number as a point of reference only. However, individual transcript sequences of the same gene can differ through naturally occurring variations (e.g. polymorphisms), each with its own valid existence. This clone is substantially in agreement with the reference, but a complete review of all prevailing variants is recommended prior to use. [More info](#)

OTI Annotation: This clone was engineered to express the complete ORF with an expression tag. Expression varies depending on the nature of the gene.

Components: The ORF clone is ion-exchange column purified and shipped in a 2D barcoded Matrix tube containing 10ug of transfection-ready, dried plasmid DNA (reconstitute with 100 ul of water).

Reconstitution Method:

1. Centrifuge at 5,000xg for 5min.
2. Carefully open the tube and add 100ul of sterile water to dissolve the DNA.
3. Close the tube and incubate for 10 minutes at room temperature.
4. Briefly vortex the tube and then do a quick spin (less than 5000xg) to concentrate the liquid at the bottom.
5. Store the suspended plasmid at -20°C. The DNA is stable for at least one year from date of shipping when stored at -20°C.

RefSeq: [NM_001184717.1](#), [NP_001171646.1](#)

RefSeq Size: 4132 bp

RefSeq ORF: 1974 bp

Locus ID: 25976

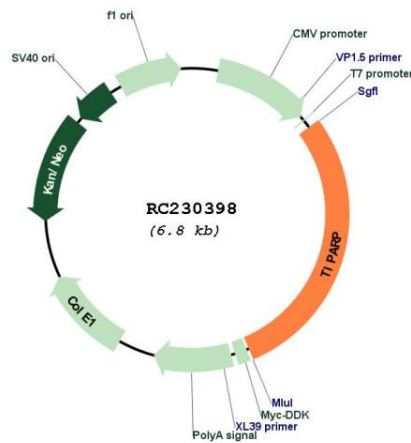
UniProt ID: [Q7Z3E1](#)

Cytogenetics: 3q25.31

MW: 76.2 kDa

Gene Summary: This gene encodes a member of the poly(ADP-ribose) polymerase superfamily. Studies of the mouse ortholog have shown that the encoded protein catalyzes histone poly(ADP-ribosylation) and may be involved in T-cell function. Alternative splicing results in multiple transcript variants. [provided by RefSeq, May 2010]

Product images:



Circular map for RC230398