

Product datasheet for **RC230394**

GGA3 (NM_001172703) Human Tagged ORF Clone

Product data:

Product Type:	Expression Plasmids
Product Name:	GGA3 (NM_001172703) Human Tagged ORF Clone
Tag:	Myc-DDK
Symbol:	GGA3
Mammalian Cell Selection:	Neomycin
Vector:	pCMV6-Entry (PS100001)
E. coli Selection:	Kanamycin (25 ug/mL)



[View online »](#)

ORF Nucleotide
Sequence:

>RC230394 representing NM_001172703
Red=Cloning site Blue=ORF Green=Tags(s)

TTTTGTAATACGACTCACTATAGGGCGGCCGGGAATTCGTCGACTGGATCCGGTACCGAGGAGATCTGCC
GCC**CGGATCGCC**

ATGAAGAAGTGTGGGAGGAGATTTTCATAACGAAGTGGGAAGTTCGGCTTTTTGAATGAGTTAATCAAAG
TCGTCTCTCCAAAGTACCTGGGGACAGGGTGTCTGAGAAAGTGAAGACCAAGGTTATTGAGCTGCTGTA
CAGCTGGACCATGGCCCTGCCAGAAGAAGCAAAGATCAAAGACGCCTACCACATGCTGAAGAGACAGGGC
ATAGTGCAGTCTGACCCACCAATTCCTGTGGATAGGACGCTGATCCCCTCTCCACCACCTCGTCCAAAA
ACCCTGTTTTGATGATGAGGAGAAGTCCAAGCTTTTAGCCAAGCTGCTGAAAAGCAAAAACCCAGATGA
CCTGCAGGAGGCCAACAGCTCATCAAGTCCATGGTGAAGGAAGACGAGGCACGGATCCAGAAGGTGACC
AAGCGTCTGCACACGTTAGAGGAAGTTAACAACAACGTGAGACTGCTCAGTGAGATGCTGCTTCATTACA
GCCAGGAGGACTCTTCGGACGGGACAGAGAGCTGATGAAGGAGCTGTTTATCAGTGTGAGAACAAGAG
GCGGACTTTATTTAAACTCGCCAGTGAAGTGAAGTGAAGTGAAGTGAAGTGAAGTGAAGTGAAGTGAAGT
AGTGACAACCTCTCCCGGTTCATCAACTTTACAAAACAATTATTGAAGGGCAGGTCATCAATGGCGAGG
TGCTACCTTAACCTGCCTGACTCGGAAGGAAACAGTCAAGTGCAGTAACCAAGGCACGCTCATCGACCT
TGCGGAGCTGGACACGACCAACAGTTTGTCTCCGTGTTGGCCCCAGCACCTACTCCACCCTCTCAGGC
ATCCCAATCTCCCTCCACCACCCAGGCTCAGGACCTCCACGGAGCCGCTCTCTAGCCAGGCCGAGG
CCACCCTGGGGCCAGCAGCACAAGCAACGCCCTCTCCTGGTGGACGAGGAGCTACTCTGCTTGGGCT
CGCCGACCCAGCCCTAATGTTCTCCAAAGAGTCAAGTGGGAACAGCCAGTGGCACCTGCTCCAGAGG
GAACAGTCCGACCTGGACTTCTCAGCCCAGGCCGGGACCGCTGCCTGTGGCGCTCCGATGCTCCTC
TGCTCCAGCCCTCAGCCCCTCCTCAAGCAGTCCCAAGCTCCACTGCCGCTCCCTTCCAGCTCCTGT
GGTCCCAGCCAGTGTTCCTGCCCCAGTGGGGCTCCTCCTTGTCTTCTACTGGAGTGGCCCCAGCCTTG
GCCCAAAAGTTGAGCCCGCAGTCCCTGGGCACCATGGCTTGGCGTTGGGCAACAGCGCGCTGCACCACC
TGGATGCCCTCGATCAGTTCTAGAAGAGGCCAAAGTACCTCGGGCTTGGTGAACCCACTACCTCCCC
TCTCATCCCCACCACCACCCAGCCAGGCCCTCCTGCCCTTCTCCACGGGGCCCGCAGCCCGCTCTTC
CAGCCACTGAGTTTCCAGTCCCAGGGCAGCCCCCGAAGGGGCTGAGCTCTCCCTGGCCAGCATCCAGC
TGCCCCCTGGAATCGATCAAGCTAGCAGTGCCTTCTGTGACAGCTACGATAAAAACGGCTTCCGCAT
CCTCTTCCACTTTGCCAAGGAGTGTCCCCAGGACGACCTGACGTGCTGGTGGTGGTGGTCCATGCTG
AACACGGCTCCCTTACCTGTCAAGAGCATCGTGTGCAGGCTGCAGTGCCCAAGTCAATGAAAGTGAAGT
TGACGCCACCTTCTGGGACAGAAGTCTCTCCATTTAGCCCATCCAGCCACCTGCAGCCATCACCCAGG
CATGTTGCTGGCAATCCACTGAAGGAGAAGGTGCGGCTTCGGTATAAGCTGACCTTCGCCCTGGGGAG
CAGCTGAGCACAGAGGTGGGCGAGGTGGACCAGTTCCTCCTGTGGAACAGTGGGGGAACCTA

ACGCGTACGCGGCCGCTCGAGCAGAAACTCATCTCAGAAGAGGATCTGGCAGCAATGATATCCTGGATT
ACAAGGATGACGACGATAAGGTTTAA

Protein Sequence: >RC230394 representing NM_001172703
Red=Cloning site Green=Tags(s)

```
MKNCGRRFHNEVGKFRFLNELIKVVSPKYL GDRVSEKVKTKVIELLYSWTMALPEEAKIKDAYHMLKRQG
IVQSDPPIPVDRTLIPSPPPRPKNPVFDDEEKSKLLAKLLKSKNPDDLQEANKLIKSMVKEDEARIQKVT
KRLHTLEEVENNVRLLEMLLHYSQEDSSDGDRELMKELFDQCENKRRTLFLKLASETEDNDNSLGDILQA
SDNL SRVINSYKTIIEGQVINGEVATL TLPDSEGNSSQCSNOGTL IDLAELDTTNSLSSVLAPAPTPPSSG
IPILPPPQASGPPRSRSSQA EATLGPSTSNALSWLDEELLCLGLADPAPNVPPKESAGNSQWHLLQR
EQSDLDFSPRPGTAACGASDAPLLQPSAPSSSSSQAPLPPFPAPVVPASVPAPSAGSSLFSTGVAPAL
APKVEPAVPGHHGLALGNSALHHLDALDQLLEEAKVTSGLVKPTT SPLIPTTTPARLLPFSTGPGSPLF
QPLSFQSQGSPKGPESLASIHVPLESIKPSALPVTAYDKNGFRILFHFAKECPPGRPDVLVVVVSM
NTAPLPVKISIVLQAAVPKSMKVKLQPPSGTELSPFSPIQPPAAITQVMLLANPLKEKVRRLRYKLT FALGE
QLSTEVGEVDQFPPVEQWGNL
```

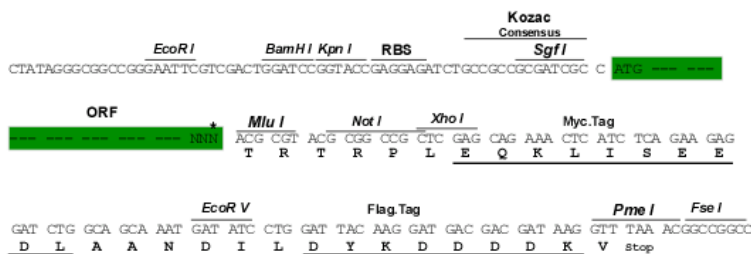
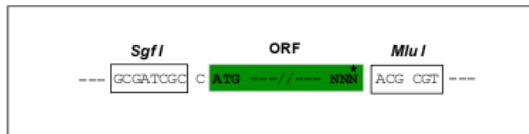
TRTRPLEQKLISEEDLAANDILDYKDDDDKV

Chromatograms: https://cdn.origene.com/chromatograms/mk8071_e01.zip

Restriction Sites: SgfI-MluI

Cloning Scheme:

Cloning sites used for ORF Shuttling:



* The last codon before the Stop codon of the ORF

ACCN: NM_001172703

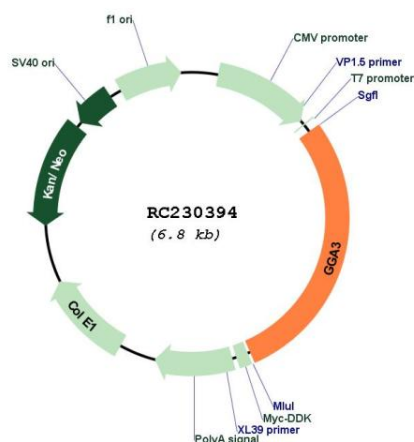
ORF Size: 1953 bp

OTI Disclaimer: The molecular sequence of this clone aligns with the gene accession number as a point of reference only. However, individual transcript sequences of the same gene can differ through naturally occurring variations (e.g. polymorphisms), each with its own valid existence. This clone is substantially in agreement with the reference, but a complete review of all prevailing variants is recommended prior to use. [More info](#)

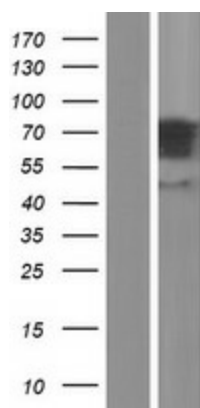
OTI Annotation: This clone was engineered to express the complete ORF with an expression tag. Expression varies depending on the nature of the gene.

Components:	The ORF clone is ion-exchange column purified and shipped in a 2D barcoded Matrix tube containing 10ug of transfection-ready, dried plasmid DNA (reconstitute with 100 ul of water).
Reconstitution Method:	<ol style="list-style-type: none">1. Centrifuge at 5,000xg for 5min.2. Carefully open the tube and add 100ul of sterile water to dissolve the DNA.3. Close the tube and incubate for 10 minutes at room temperature.4. Briefly vortex the tube and then do a quick spin (less than 5000xg) to concentrate the liquid at the bottom.5. Store the suspended plasmid at -20°C. The DNA is stable for at least one year from date of shipping when stored at -20°C.
RefSeq:	<u>NM_001172703.3</u>
RefSeq ORF:	1956 bp
Locus ID:	23163
UniProt ID:	<u>Q9NZ52</u>
Cytogenetics:	17q25.1
Protein Families:	Druggable Genome
Protein Pathways:	Lysosome
MW:	70.6 kDa
Gene Summary:	This gene encodes a member of the Golgi-localized, gamma adaptin ear-containing, ARF-binding (GGA) family. This family includes ubiquitous coat proteins that regulate the trafficking of proteins between the trans-Golgi network and the lysosome. These proteins share an amino-terminal VHS domain which mediates sorting of the mannose 6-phosphate receptors at the trans-Golgi network. They also contain a carboxy-terminal region with homology to the ear domain of gamma-adaptins. Multiple alternatively spliced transcript variants have been identified in this gene. [provided by RefSeq, Feb 2010]

Product images:



Circular map for RC230394



Western blot validation of overexpression lysate (Cat# [LY433394]) using anti-DDK antibody (Cat# [TA50011-100]). Left: Cell lysates from untransfected HEK293T cells; Right: Cell lysates from HEK293T cells transfected with RC230394 using transfection reagent MegaTran 2.0 (Cat# [TT210002]).