

Product datasheet for **RC230385**

XPNPEP1 (NM_001167604) Human Tagged ORF Clone

Product data:

Product Type:	Expression Plasmids
Product Name:	XPNPEP1 (NM_001167604) Human Tagged ORF Clone
Tag:	Myc-DDK
Symbol:	XPNPEP1
Synonyms:	APP1; SAMP; XPNPEP; XPNPEPL; XPNPEPL1
Mammalian Cell Selection:	Neomycin
Vector:	pCMV6-Entry (PS100001)
E. coli Selection:	Kanamycin (25 ug/mL)



[View online »](#)

ORF Nucleotide
Sequence:

>RC230385 representing NM_001167604
Red=Cloning site Blue=ORF Green=Tags(s)

TTTTGTAATACGACTCACTATAGGGCGGCCGGAATTCGTCGACTGGATCCGGTACCGAGGAGATCTGCC
GCCGCGATCGCC

ATGGCAGCCTCCAGAAAGCCACCGGAGTAAGGGTGAATCACCAGGATTTCAACTGAGAAATTTAAGAA
TAATTGAACCTAACGAGGTGACACACTCAGGAGACACAGGTGTGAAACAGACGGCAGAATGCCTCCAAA
GGTGACTTCAGAGCTGCTTCGGCAGCTGAGACAAGCCATGAGGAACTCTGAGTATGTGACCGAACCGATC
CAGGCCTACATCATCCCATCGGGAGATGCTCATCAGAGTGAGTATATTGCTCCATGTGACTGTGCGCGGG
CTTTTGTCTCTGGATTGATGGCTCTGCGGGCACAGCCATCATCAGAGAAGAGCATGCAGCCATGTGGAC
TGACGGGCGCTACTTTCTCAGGCTGCCAAGCAAATGGACAGCAACTGGACACTTATGAAGATGGGTCTG
AAGGACACACCAACTCAGGAAGACTGGTGGTGTGAGTGTGCTTCTGAAGGATCCAGGGTTGGTGTGGACC
CCTTGATCATTCTACAGATTATTGGAAGAAAATGGCCAAAGTTCTGAGAAGTCCCGGCCATCACCTCAT
TCCTGTCAAGGAGAACCTCGTTGACAAAATCTGGACAGACCGTCTGAGCGCCCTTGCAAGCCTCTCCTC
ACACTGGGCTGGATTACACAGGCATCTCTGGAAGGACAAGGTTGCAGACCTTCGGTTGAAAATGGCTG
AGAGGAACGTCATGTGGTTTGTGGTCACTGCCTTGGATGAGATTGCGTGGCTATTTAATCTCCGAGGATC
AGATGTGGAGCACAATCCAGTATTTTTCTCCTACGCAATCATAGGACTAGAGACGATCATGCTCTTCATT
GATGGTGACCGCATAGACGCCCCAGTGTGAAGGAGCACCTGCTTCTTGACTTGGGTCTGGAAGCCGAAT
ACAGGATCCAGGTGCATCCCTACAAGTCCATCTGAGCGAGCTCAAGGCCCTGTGTGCTGACCTCTCCCC
AAGGGAGAAGGTGTGGGTGAGTACAAGCCAGCTATGCTGTGAGCGAGACCATCCCCAAGGACCACCGC
GGCTGTATGCCTTACACCCCATCTGCATCGCCAAAGCTGTGAAGAATTCAGCTGAGTCAGAAGGCATGA
GGCGGGCTCACATTAAGATGCTGTTGCTCTCTGTGAACCTTTAACTGGCTGGAGAAAGAGGTTCCCAA
AGGTGGTGTGACAGAGATCTCAGCTGCTGACAAAAGCTGAGGAGTTTCGCAGGCAACAGGCAGACTTTGTG
GACCTGAGCTTCCCAACAATTTCCAGTACGGGACCCAACGGCGCCATCATTCACTACGCGGATGGCACCA
CAGATGTGACGCGGACAATGCATTTTGGGACCCCTACAGCCTACGAGAAGGAATGCTTCACATATGCTCT
CAAGGGCCACATAGCTGTGAGTGCAGCCGTTTTCCCGACTGGAACCAAAGGTCACCTTCTTGACTCCTTT
GCCCGTTCAGCTTTATGGGATTCAGGCCTAGATTACTTGCACGGGACTGGACATGGTGTGGGTCTTTTT
TGAATGTCCATGAGGGTCTTGCAGCATCAGTTACAAAACATTCTCTGATGAGCCCTTGGAGGCAGGCAT
GATTGTCACTGATGAGCCCGGTACTATGAAGATGGGGCTTTTGAATTCGCATTGAGAATGTTGCCTT
GTGGTTCTGTGAAGACCAAGTATAATTTAATAACCGGGGAAGCCTGACCTTTGAACTCTAACATTGG
TTCCAATTCAGACCAAAATGATAGATGTGGATTCTTACAGACAAGAGTGCGACTGGCTCAACAATTA
CCACCTGACCTGCAGGGATGTGATTGGGAAGGAATTGCAGAAACAGGGCCGCCAGGAAGCTCTCAGTGG
CTCATCAGAGAGACGCAACCCATCTCCAACAGCAT

ACGCGTACGCGGCCGCTCGAGCAGAAACTCATCTCAGAAGAGGATCTGGCAGCAAATGATATCCTGGATT
ACAAGGATGACGACGATAAGGTTTAA

Reconstitution Method:

1. Centrifuge at 5,000xg for 5min.
2. Carefully open the tube and add 100ul of sterile water to dissolve the DNA.
3. Close the tube and incubate for 10 minutes at room temperature.
4. Briefly vortex the tube and then do a quick spin (less than 5000xg) to concentrate the liquid at the bottom.
5. Store the suspended plasmid at -20°C. The DNA is stable for at least one year from date of shipping when stored at -20°C.

RefSeq: [NM_001167604.1](#), [NP_001161076.1](#)

RefSeq ORF: 1929 bp

Locus ID: 7511

UniProt ID: [Q9NQW7](#)

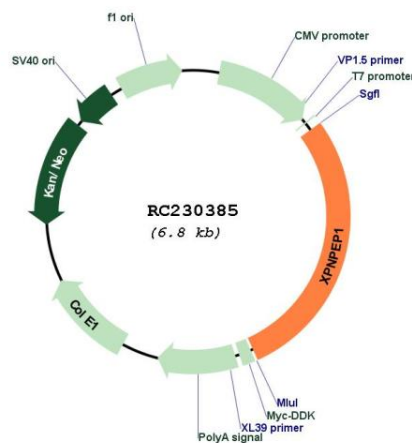
Cytogenetics: 10q25.1

Protein Families: Druggable Genome, Protease

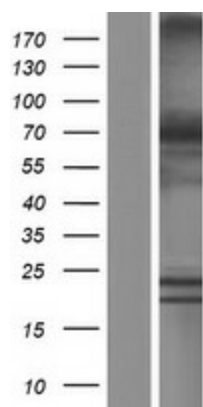
MW: 72.6 kDa

Gene Summary: This gene encodes the cytosolic form of a metalloaminopeptidase that catalyzes the cleavage of the N-terminal amino acid adjacent to a proline residue. The gene product may play a role in degradation and maturation of tachykinins, neuropeptides, and peptide hormones. Alternative splicing results in multiple transcript variants.[provided by RefSeq, Nov 2009]

Product images:



Circular map for RC230385



Western blot validation of overexpression lysate (Cat# [LY433385]) using anti-DDK antibody (Cat# [TA50011-100]). Left: Cell lysates from untransfected HEK293T cells; Right: Cell lysates from HEK293T cells transfected with RC230385 using transfection reagent MegaTran 2.0 (Cat# [TT210002]).