

Product datasheet for **RC230380**

KLHL13 (NM_001168301) Human Tagged ORF Clone

Product data:

Product Type:	Expression Plasmids
Product Name:	KLHL13 (NM_001168301) Human Tagged ORF Clone
Tag:	Myc-DDK
Symbol:	KLHL13
Synonyms:	BKLHD2
Mammalian Cell Selection:	Neomycin
Vector:	pCMV6-Entry (PS100001)
E. coli Selection:	Kanamycin (25 ug/mL)



[View online »](#)

ORF Nucleotide
Sequence:

>RC230380 representing NM_001168301
Red=Cloning site Blue=ORF Green=Tags(s)

TTTTGTAATACGACTCACTATAGGGCGGCCGGAATTCGTGCGACTGGATCCGGTACCGAGGAGATCTGCC
GCC**CGGATCGCC**

ATGGATCATCTGCATAGAGGGGAATTGGTTGCTGCAATACTTCGTAACCGATCTCTCGTGAAGAGGAAG
ACCAACACATGAAATTGCCCTTGGAGGCAGCGAAATGGGCTCTCATCCATTTGCAGTCTTCCAAGGC
AGGACCTACACGCATCTTACCAGCAATACCCACAGTTCTGTGGTGTACAGGGCTTTGACCAGCTTCGA
CTTGAAGGATTGCTTTGTGATGTGACCCTGATGCCAGGTGACACAGATGATGCTTCCCTGTGCATAGAG
TCATGATGGCATCTGCTAGTGATTACTTCAAGGCTATGTTACAGGTGGAATGAAAGAACAAGATTTAAT
GTGCATTAAACTCATGGTGTGAGCAAAGTCGGTCTAAGGAAAATTATTGATTTCACTTATACTGCAAAG
CTTTCTCTTAATATGGACAACCTTCAAGACACGCTGGAAGCTGCCAGTTTCTACAGATTCTGCCAGTTT
TGGACTTCTGAAAGTGTCTCATATCTGGGGTCACTTAGACAACGTGTTGAAGTTGGACGGATTGC
CAACACCTACAATCTAACCGAAGTGATAAATACGTTAACAGTTTCGTCTTGAAGATTTTCTGCATTG
CTGAGCACAGGGAGTTCTTGAAACTCCCTTTGAGCGTCTTGCCTTCGTGCTTCCAGTAATAGCCTTA
AGCACTGTACTGAACTTGAGCTCTTAAAGGCTACCTGTCGTTGGCTTCGCTGGAAGAGCCTCGGATGGA
CTTTGCTGCAAAATTAATGAAGAACATACGATTTCCACTGATGACACCACAGGAGCTCATTAATTACGTG
CAAACGGTGGATTTATGAGAAGTACAACTACTTGTGTAATTTGCTTTTGAAGCCAGCAATTACCAAA
TGATGCCATATATGCAGCCAGTTATGCAGTCAGACAGGACTGCCATTAGGTCTGACACCACTCACTTGGT
TACACTAGGAGGAGTCTGAGGCAGCAGCTGGTTGTCAGTAAGGAATTGCGCATGATGATGAAAAGGCC
CATGAGTGGAAATCGTTAGCCCCATGGATGCCCAAGGTACCAGCATGGCATCGCCGTCATTGAAATTT
TTCTCTATGTGGTTGGCGGACAGAGTAATTATGATACAAAAGGAAAAACGGCAGTTGATACAGTCTTCCAG
ATTTGATCCTCGATAACAATAAATGGATGCAAGTTGCATCTTTAAATGAAAAGCGCACCTTCTCCACCTA
AGTGCCCTCAAAGGATATCTGTATGCAGTTGGTGGCGAAATGCAGCAGGTGAACTGCCACAGTAGAAT
GTTACAATCCAAGAACAATGAATGGACCTATGTTGCCAAAATGAGTGAGCCCCACTATGGCCATGCTGG
AACTGTGTATGGAGGAGTGATGATATTTCCAGGAGGAATTACTCATGATACTTTCCAAAAGGAGCTCATG
TGCTTTGACCCTGATACTGACAAATGGATCCAGAAGGCGCCAATGACCACTGTGAGAGTCTGCATTGCA
TGTGTACAGTGGGAGAAAGGCTCTATGTCATTGGTGGCAATCACTTCAGAGGAACAAGTATTATGATGA
TGTCTAAGCTGTGAATACTATTCACCTATCCTTGACCAGTGGACCCCAATTGCTGCCATGTTAAGAGGG
CAGAGTGTGTTGGGGTCTGCTTCCGAAAATAAATCTATGTGTTGGGGGATTCTTGAATAATC
GTTGTATGGTAGAGATAGTGAGAAATATGATCCAGATAAAGATGAATGGCATAAGGTTTTTGATCTGCC
AGAATCCCTTGGTGGCATTCTGTGCTTGACACTCACAGTTTTTCCACCAGAAGAAACCACACCATCACCT
TCTAGAGAGTCCCCTCTTCTGCACCT

ACGCGTACGCGGCCGCTCGAGCAGAAACTCATCTCAGAAGAGGATCTGGCAGCAATGATATCCTGGATT
ACAAGGATGACGACGATAAGGTTTAA

Protein Sequence: >RC230380 representing NM_001168301
Red=Cloning site Green=Tags(s)

```
MDHLHRGELVAAILRNRLSVEEEDQHMKLSLGGSEMGLSSHLQSSKAGPTRIFTSNTHSSVVLQGFQDLR
LEGLLCDVTLMPGDTDDAFVHRVMMASADYFKAMFTGGMKEQDLMCIKLHGVSQVGLRKIIDFIYTAK
LSLNMDNLQDTLEAASFQILPVLDFCKVFLISGVTLDNCEVGRANTYNLTEVDKYVNSFVLKNFPAL
LSTGEFLKLPFERLAFVLSNSLKHCTELELFKATCRWLRLEEPRMDFAAKLMKNIRFPLMTPQELINYY
QTVDFMRTDNTCVNLLLEASNYQMPYMQPVMQSDRTAIRSDTTHLVTLGGVLRQQLVVSKELRMYDEKA
HEWKS LAPMDAPRYQHGI AVIGNFLYVVGQSNYDTKGKTA VDTVFRFDPRYNKWMQVASLNEKRTFFHL
SALKGYLYAVGGRNAAGELPTVECYNPRTNEWYVAKMSEPHYGHAGTVYGGVMISSGITHDTFQKELM
CFDPDTDKWIQKAPMTTVRGLHCMCTVGERLYVIGGNHFRGTSYDDVLSCEYSPILDQWTPIAAMLRG
QSDVGVAVFENKIYVVGYSWNNRCMVEIVQKYDPDKDEWHKVFIDLPESLGGIRACTLTVFPPEETTPSP
SRESPLSAP
```

TRTRPLEQKLISEEDLANDILDYKDDDDKV

Chromatograms: https://cdn.origene.com/chromatograms/mk8070_h07.zip

Restriction Sites: SgfI-MluI

Cloning Scheme:



ACCN: NM_001168301

ORF Size: 1917 bp

OTI Disclaimer: The molecular sequence of this clone aligns with the gene accession number as a point of reference only. However, individual transcript sequences of the same gene can differ through naturally occurring variations (e.g. polymorphisms), each with its own valid existence. This clone is substantially in agreement with the reference, but a complete review of all prevailing variants is recommended prior to use. [More info](#)

OTI Annotation: This clone was engineered to express the complete ORF with an expression tag. Expression varies depending on the nature of the gene.

Components: The ORF clone is ion-exchange column purified and shipped in a 2D barcoded Matrix tube containing 10ug of transfection-ready, dried plasmid DNA (reconstitute with 100 ul of water).

Reconstitution Method:

1. Centrifuge at 5,000xg for 5min.
2. Carefully open the tube and add 100ul of sterile water to dissolve the DNA.
3. Close the tube and incubate for 10 minutes at room temperature.
4. Briefly vortex the tube and then do a quick spin (less than 5000xg) to concentrate the liquid at the bottom.
5. Store the suspended plasmid at -20°C. The DNA is stable for at least one year from date of shipping when stored at -20°C.

RefSeq: [NM_001168301.1](#), [NP_001161773.1](#)

RefSeq ORF: 1920 bp

Locus ID: 90293

UniProt ID: [Q9P2N7](#)

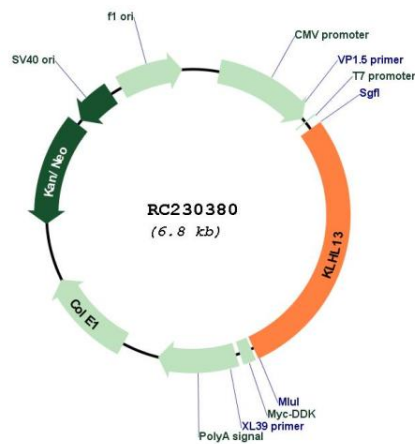
Cytogenetics: Xq24

Protein Pathways: Ubiquitin mediated proteolysis

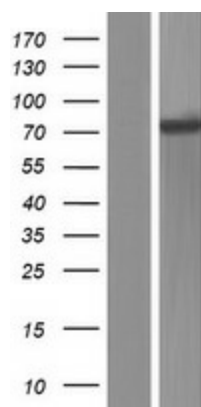
MW: 72.6 kDa

Gene Summary: This gene encodes a BTB and kelch domain containing protein and belongs to the kelch repeat domain containing superfamily of proteins. The encoded protein functions as an adaptor protein that complexes with Cullin 3 and other proteins to form the Cullin 3-based E3 ubiquitin-protein ligase complex. This complex is necessary for proper chromosome segregation and completion of cytokinesis. Alternate splicing results in multiple transcript variants. [provided by RefSeq, Mar 2010]

Product images:



Circular map for RC230380



Western blot validation of overexpression lysate (Cat# [LY433380]) using anti-DDK antibody (Cat# [TA50011-100]). Left: Cell lysates from untransfected HEK293T cells; Right: Cell lysates from HEK293T cells transfected with RC230380 using transfection reagent MegaTran 2.0 (Cat# [TT210002]).