

Product datasheet for **RC230370**

ZNF185 (NM_001178110) Human Tagged ORF Clone

Product data:

Product Type:	Expression Plasmids
Product Name:	ZNF185 (NM_001178110) Human Tagged ORF Clone
Tag:	Myc-DDK
Symbol:	ZNF185
Synonyms:	SCELL
Mammalian Cell Selection:	Neomycin
Vector:	pCMV6-Entry (PS100001)
E. coli Selection:	Kanamycin (25 ug/mL)



[View online »](#)

ORF Nucleotide Sequence:

>RC230370 representing NM_001178110
 Red=Cloning site Blue=ORF Green=Tags(s)

TTTTGTAATACGACTCACTATAGGGCGGCCGGAATTCGTCGACTGGATCCGGTACCGAGGAGATCTGCC
 GCC**CGGATCGCC**

ATGAGTATCTCAGCTCTTGGAGGCCACCAAAGGAAGCCTCTGCCACCAGCGAGGAGGAGCGCAATA
 ACGTTCTCAAGCAGATGAAAGTGCGAACACGCTGAAGGGGGACAAGAGCTGGATTACCAAGCAGGATGA
 ATCGGAGGGTCGCACCATAGAGCTGCCCTCAGGCCGAGTCGCGCCACATCCTTTTCATCAGCTGGGGAG
 GTTCCGAAGCCTAGGCCTCCGAGCACAAGGGCTCCCACTGGCTACATCATCCGGGAGTGTTCACCAAGC
 CCATAGACAGCTTCCAGCCCCAGCAGCAGTCCCCAAGGCCAACGGGACTCCAAAAGTGTGCCAG
 TCTGGTGAGAACGCTAACGCTGGTCTCCCGCCCTCTCTCTGGCTACAAGATGACCACTGAGGAT
 TACAAGAAGCTGGCACCTACAATATCAGGCGCAGCTCTACATCAGGGGACCCGAGGAGGAGGAGG
 AGGAGGTGGTCCATTCTCTCAGATGAACAGAAACGGAGGTGAGGGCTGCAAGCGGTGTTCTGAGGAG
 GACAGCTCCCGGAGCACTCTACGTCCTGTCAGCGGCCAAGAAGAGCACTGGTCTACCCAGGAGACA
 CAGGCACCGTTTATCGCGAAGAGGGTGGAGGTGGTGAAGAGGACGGGCCCTCTGAGAAGAGCCAGGACC
 CACCTGCTCTGGCAAGATCCACTCTGGCTCAAACAGGTCTCCCGAGGCAACAAAGACAAGGAGGCCCC
 CTGCTCCAGAGAGCTCCAGAGGGACTTGGCTGGTGGAGAGGCTTTCAGGGCCCCAACACAGATGCTGCA
 AGGTCAAGTGCACAGTTGAGTGTGGCAATGTGGGATCCGGAGCCACGGGCTCCCGGCTGAAGGCTTGG
 CTGCAGTAGACATCGGCTCCGAGAGAGGAAGCTCCAGTCCACTTCACTCTCTGCTGTCCCTGCTGATAG
 GAAGAGCAACAGCACAGCAGCCCAGGAGGATGCAAAGGCAGACCCAAAGGGGGCTTGGCTGATTATGAG
 GGAAGGATGTGGCCACCAGGGTCGGAGAGGCCCTGGCAGGAGAGGCCCTGGAGCTCCAAGAGGTGGCCAAG
 GAGACCAAGCTGTACCCGCTCAGCAACCTGCAGATCCAGCAGCCAGAGCGGCAGAGCCAGCCAGCGG
 ATCTGAGCAACTTGTGACAGAGAGAGTGTGGCAGCAGCGTGTGACTGATTTTGAAGGGAAGGATGTG
 GCCACCAAGTTCGGAGAGGCTGGCAGGACAGGCTGGAGCCCCAAGAGGTGGCCAAAGGAGACCCAGCTG
 TACCCACTCAGCAACCTGCAGATCCAGTACCCAGAACAGCAGAACAGCCAGCCAGCGGATCTGAGCAATT
 CGTCAGACGAGAGAGCTGCACCAGCAGGGTGGAGGCCCTCGAGCTGCATGGTCACTGTTACTGCTACT
 GCCACATCTGAGCAGCCTCACATTTATATCCAGCCCCGCAAGTGAATTGGACTCCAGCTCTACCACCA
 AAGGGATTCTCTCGTGAAGGAGTACGTGAATGCTAGTGAAGTGTCTTCTGGGAAGCCAGTATCTGCACG
 CTATAGCAACGTGAGCAGCATTGAGGACTATTGCCATGGAGAAGAAGCCTCCATGTGGCAGCACTCCA
 TACTCTGAGAGGACAACCTGGAGGATCTGTACTTACTGCAACCGTGAAGTCCGAGACTGTCAAAGATTA
 CCTAGAACATCTTGGTATCTGCTGCCATGAATATTGCTTTAAGTGTGGGATTTGAGTAACCCGATGGG
 CGATCTCTGGATCAGATCTTACCTACCGTGACACCATTCACTGTGGAAATGCTATGAGAAGCTCTTC

ACGCGTACGCGGCCGCTCGAGCAGAACTCATCTCAGAAGAGGATCTGGCAGCAATGATATCCTGGATT
 ACAAGGATGACGACGATAAGGTTAA

Protein Sequence:

>RC230370 representing NM_001178110
 Red=Cloning site Green=Tags(s)

MSISALGGRTKGKPLPPGEEERNVVKQMKVRTTLKGDKSWITKQDESEGRTEIELPSGRSRATSFSSAGE
 VPKPRPPSTRAPTGYIIRGVFTKPIDSSSQPQQQFPKANGTPKSAASLVRTANAGPPRPSSSGYKMTTED
 YKKLAPYNIIRRSSTSGDEEEEEVVVPSSEDEQRRSEAAAGVLRRTAPREHSYVLSAAKKSTGPTQET
 QAPFIAKRVEVVEEDGPSEKSDPPALARSTPGSNRSPGNKDKEAPCSRELQRDLAGEEAFRAPNTDAA
 RSSAQLSDGNVGSATGSRPEGLAAVDIGSERGSSSATSVSAVPADRKSNSTAAQEDAKADPKGALADYE
 GKDVATRVGEAWQERPGAPRGGQDPVPAQQPADPSTPERQSSPSGSEQLVRRRESCGSSVLTDFEGKDV
 ATKVGEAWQDRPGAPRGGQDPVPTQQPADPSTPEQQNSPSGSEQVVRRESCTSRVRSPPSCMVTVTVT
 ATSEQPHIYIPAPASELDSSTTKGILFVKEYVNASEVSSGKPVSAARYSNVSSIEDSFAMEKKPPCGSTP
 YSERTTGGICTYCNREIRDCKITLHLGICCHEYCFKCGICSKPMGDLDDQIFIHRDTHCGKCYEKLK

TRTRPLEQKLISEEDLAANDILDYKDDDDKV

Chromatograms: https://cdn.origene.com/chromatograms/mk8070_e10.zip

Restriction Sites: SgfI-MluI

Cloning Scheme:



ACCN: NM_001178110

ORF Size: 1890 bp

OTI Disclaimer: The molecular sequence of this clone aligns with the gene accession number as a point of reference only. However, individual transcript sequences of the same gene can differ through naturally occurring variations (e.g. polymorphisms), each with its own valid existence. This clone is substantially in agreement with the reference, but a complete review of all prevailing variants is recommended prior to use. [More info](#)

OTI Annotation: This clone was engineered to express the complete ORF with an expression tag. Expression varies depending on the nature of the gene.

Components: The ORF clone is ion-exchange column purified and shipped in a 2D barcoded Matrix tube containing 10ug of transfection-ready, dried plasmid DNA (reconstitute with 100 ul of water).

- Reconstitution Method:**
1. Centrifuge at 5,000xg for 5min.
 2. Carefully open the tube and add 100ul of sterile water to dissolve the DNA.
 3. Close the tube and incubate for 10 minutes at room temperature.
 4. Briefly vortex the tube and then do a quick spin (less than 5000xg) to concentrate the liquid at the bottom.
 5. Store the suspended plasmid at -20°C. The DNA is stable for at least one year from date of shipping when stored at -20°C.

RefSeq: [NM_001178110.1](#), [NP_001171581.1](#)

RefSeq ORF: 1893 bp

Locus ID: 7739

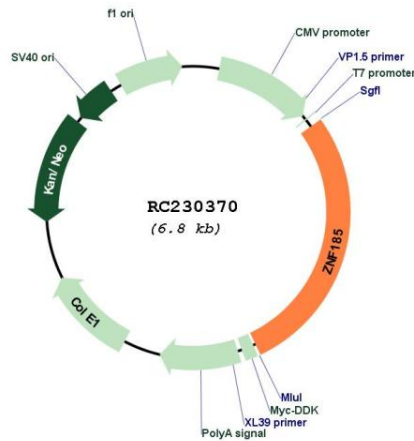
UniProt ID: [O15231](#)

Cytogenetics: Xq28

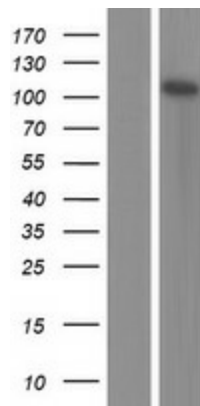
MW: 67.7 kDa

Gene Summary: Zinc-finger proteins bind nucleic acids and play important roles in various cellular functions, including cell proliferation, differentiation, and apoptosis. This gene encodes a LIM-domain zinc finger protein. The LIM domain is composed of two contiguous zinc finger domains, separated by a two-amino acid residue hydrophobic linker. The LIM domain mediates protein:protein interactions. Multiple alternatively spliced transcript variants encoding different isoforms have been identified.[provided by RefSeq, May 2010]

Product images:



Circular map for RC230370



Western blot validation of overexpression lysate (Cat# [LY433370]) using anti-DDK antibody (Cat# [TA50011-100]). Left: Cell lysates from untransfected HEK293T cells; Right: Cell lysates from HEK293T cells transfected with RC230370 using transfection reagent MegaTran 2.0 (Cat# [TT210002]).