

Product datasheet for **RC230345**

LPP (NM_001167671) Human Tagged ORF Clone

Product data:

Product Type:	Expression Plasmids
Product Name:	LPP (NM_001167671) Human Tagged ORF Clone
Tag:	Myc-DDK
Symbol:	LPP
Mammalian Cell Selection:	Neomycin
Vector:	pCMV6-Entry (PS100001)
E. coli Selection:	Kanamycin (25 ug/mL)



[View online »](#)

ORF Nucleotide Sequence:

>RC230345 representing NM_001167671
 Red=Cloning site Blue=ORF Green=Tags(s)

TTTTGTAATACGACTCACTATAGGGCGGCCGGGAATTCGTCGACTGGATCCGGTACCGAGGAGATCTGCC
 GCC**GCGATCGCC**

ATGTCACCCATCTTGGCTGCCACCCAAAAGCACTGGTGAAGCCCTCGGCCATGTGCCTGCACGGATGG
 AGACCACCCATTCTTTGGGAACCCAGCATTTTCAAGTGTCTACACAACAGCCACCCAAAAAGTTTGCCCC
 GGTAGTTGCTCCAAAACCTAAGTACAACCCATACAAAACACTGGAGGTGAGGGTATTTCTTCCACCC
 CCACCTCCACCTTAGATGATTCCAGTGCCTTCCATCTATCTCTGAAACTTTCTCTCCACCACCTC
 TTGATGAAGAGGCTTTCAAAGTACAGGGGAATCCCGGAGGCAAGACACTTGAGGAGAGGCGCTCCAGCCT
 GGACGCTGAGATTGACTCCTTGACCAGCATCTTGGCTGACCTTGAGTGCAGCTCCCCCTATAAGCCTCGG
 CCTCCACAGAGCTCCACTGGTTCAACAGCCTCTCCTCCAGTTTCGACCCAGTCACAGGACACAAGAGAA
 TGGTCATCCCGAACCAACCCCTCTAACAGCAACCAAGAAGTCTACATTGAAACCCAGCCTGCACCCCA
 GGCTGGACCCATCCCTGTGGCTCCAATCGAACACTCAAACCCAGCCTCAGCCAGTCCCAGCCTCTAC
 ACCACGGCTCCACTTCTCAAGGCCTACCTTTAATGTGCAGGTGAAGTCAGCCAGCCAGCCAGCCCTATT
 ATATGGCTGCCCTTTCATCAGGACAAATTTATGGCTCAGGGCCCCAGGGCTATAACTCAGCCAGTTCC
 TGTCTCTGGGAGTGTCCACCTCCTTCAACACGGGGAGGCATGGATTATGCCTACATTCCACCACAGGA
 CTTACAGCCGAGCCTGGGTATGGGTATGCCCCCAACAGGGAGCCTATTATGAAGGCTACTATGCAGCAG
 GGCCAGGCTATGGGGGCAGAAATGACTCTGACCTACCTATGGTCAACAAGGTCACCCAAATACCTGGAA
 ACGGGAACAGGGTACTCCTCCTGGAGCAGGGAACCAAGCCCTCCTGGGATGTATCCAGTCACTGGT
 CCCAAGAAGACCTATATCACAGATCCTGTTTCAGCCCCCTGTGCGCCACCATTGCAGCCAAAGGGTGGCC
 ATTCAGGGCAACTGGGGCCTTCGTCAAGTGGCCCTTCAATCCGCCAGAGGATGAGCTTGAGCACCTGAC
 CAAAAAGATGCTGTATGACATGGAAAATCCACCTGCTGACGAATACTTTGGCCGCTGTGCTCGCTGTGGA
 GAAAACGTAGTTGGGGAAGGTACAGGATGCACTGCCATGGATCAGGTCTTCCACGTGGATTGTTTTACCT
 GCATCATCTGCAACAACAAGCTCCGAGGGCAGCCATTCTATGCTGTGAAAAGAAAGCATACTGCGAGCC
 CTGCTACATTAATACTCTGGAGCAGTGAATGTGTGTTCCAAGCCATCATGGAGCGGATTCTCCGAGCC
 ACCGGGAAGGCTATCATCCTCACTGTTTCACTGCGTGTATGTCACCCAGCCTGGATGGGATCCCAT
 TCACTGTGGATGCTGGCGGGCTCATTCACTGCATTGAGGACTCCACAAGAAATTTGCCCGCGATGTTT
 TGTGTGCAAGGAGCCTATTATGCCAGCCCCGGCCAGGAGGAGACTGTCCGTATTGTGGCTTTGGATCGA
 GATTTCCATGTTCACTGCTACCGATGCGAGGATTGCGGTGGTCTCCTGTCTGAAGGAGATAACCAAGGCT
 GCTACCCCTTGGATGGGCACATCCTCTGCAAGACCTGCAACTCTGCCCGCATCAGGGTGTGACCCCAA
 GCGGAGCACTGACCTT

ACGCGTACGCGGCCGCTCGAGCAGAAACTCATCTCAGAAGAGGATCTGGCAGCAAATGATATCCTGGATT
 ACAAGGATGACGACGATAAGGTTTAA

Protein Sequence:

>RC230345 representing NM_001167671
 Red=Cloning site Green=Tags(s)

MSHPSWLPPKSTGEPLGHVPARMETTHSFGNPSISVSTQQPPKFAFVAVPKPKYNPYKQPGGEGDFLPP
 PPPPLDDSSALPSISGNFPPPPPLDEEAFKVQGNPGGKLEERRSSLDLAEIDSLTILADLECSSPYKPR
 PPQSSTGSTASPPVSTPVTGHKRMVIPNQPLTATKKSTLKPQPAPQAGPIPVAPIGTLKPQPVPVASY
 TFASTSSRPTFNVQVKSAPSPHYMAAPSSGQIYGSGPQGYNTQVPVSGQCPPPSTRGGMDYAYIPPPG
 LQPEPGYGYAPNQGRYYEGYYAAGPGYGRNDSPTYGQQGHPNTWKREPGYTPPGAGNQPPGMYPVTG
 PKKTYITDPVSAPCAPPLQPKGGHSGQLGPSVAPSFPEDELEHLTKKMLYDMENPPADEYFGRCARCG
 ENVVGEGTGCTAMDQVFHVDFCTCIICNNKLRGQPFYAVEKKAYCEPCYINTLEQCNVCSKPIMERILRA
 TGKAYHPHCFTCVMCHRSLDGIPFTVDAGGLIHCIEDFHKKFAPRCSVCKEPIMPAPGQEETVRIVALDR
 DFHVHCYRCEDCGGLLSEGDNQCYPLDGHILCKTNSARIRVLTAKASTDL

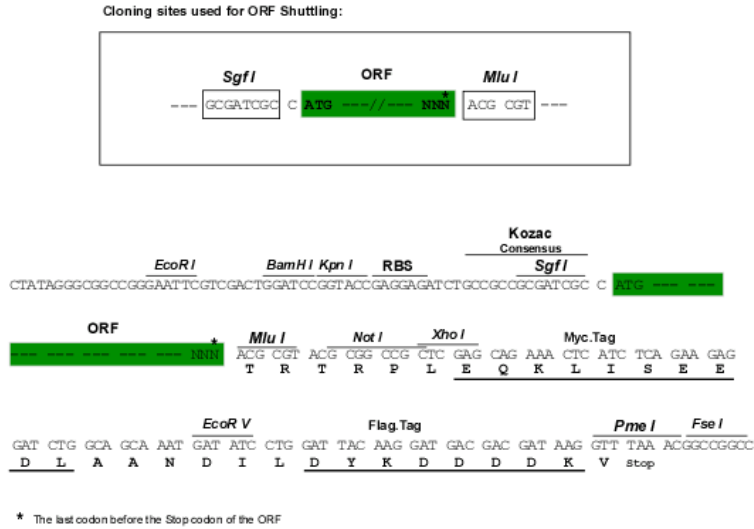
TRTRPLEQKLISEEDLAANDILDYKDDDDKV

Chromatograms:

https://cdn.origene.com/chromatograms/mk8069_f07.zip

Restriction Sites: SgfI-MluI

Cloning Scheme:



ACCN: NM_001167671

ORF Size: 1836 bp

OTI Disclaimer: The molecular sequence of this clone aligns with the gene accession number as a point of reference only. However, individual transcript sequences of the same gene can differ through naturally occurring variations (e.g. polymorphisms), each with its own valid existence. This clone is substantially in agreement with the reference, but a complete review of all prevailing variants is recommended prior to use. [More info](#)

OTI Annotation: This clone was engineered to express the complete ORF with an expression tag. Expression varies depending on the nature of the gene.

Components: The ORF clone is ion-exchange column purified and shipped in a 2D barcoded Matrix tube containing 10ug of transfection-ready, dried plasmid DNA (reconstitute with 100 ul of water).

- Reconstitution Method:
1. Centrifuge at 5,000xg for 5min.
 2. Carefully open the tube and add 100ul of sterile water to dissolve the DNA.
 3. Close the tube and incubate for 10 minutes at room temperature.
 4. Briefly vortex the tube and then do a quick spin (less than 5000xg) to concentrate the liquid at the bottom.
 5. Store the suspended plasmid at -20°C. The DNA is stable for at least one year from date of shipping when stored at -20°C.

RefSeq: [NM_001167671.3](#)

RefSeq ORF: 1839 bp

Locus ID: 4026

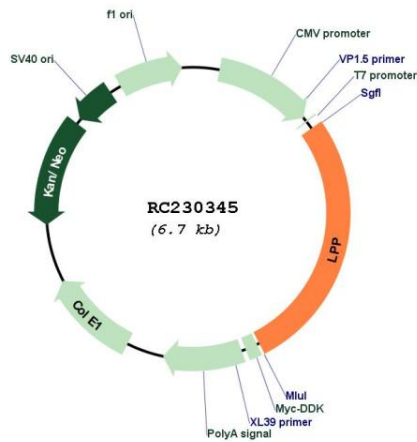
UniProt ID: [Q93052](#)

Cytogenetics: 3q27.3-q28

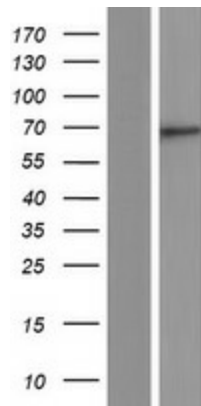
MW: 66.2 kDa

Gene Summary: This gene encodes a member of a subfamily of LIM domain proteins that are characterized by an N-terminal proline-rich region and three C-terminal LIM domains. The encoded protein localizes to the cell periphery in focal adhesions and may be involved in cell-cell adhesion and cell motility. This protein also shuttles through the nucleus and may function as a transcriptional co-activator. This gene is located at the junction of certain disease-related chromosomal translocations, which result in the expression of chimeric proteins that may promote tumor growth. Alternative splicing results in multiple transcript variants. [provided by RefSeq, Jul 2014]

Product images:



Circular map for RC230345



Western blot validation of overexpression lysate (Cat# [LY433345]) using anti-DDK antibody (Cat# [TA50011-100]). Left: Cell lysates from untransfected HEK293T cells; Right: Cell lysates from HEK293T cells transfected with RC230345 using transfection reagent MegaTran 2.0 (Cat# [TT210002]).