

Product datasheet for **RC230343**

SRPR alpha (SRPRA) (NM_001177842) Human Tagged ORF Clone

Product data:

Product Type:	Expression Plasmids
Product Name:	SRPR alpha (SRPRA) (NM_001177842) Human Tagged ORF Clone
Tag:	Myc-DDK
Symbol:	SRPR alpha
Synonyms:	DP; Sralpha; SRPR
Mammalian Cell Selection:	Neomycin
Vector:	pCMV6-Entry (PS100001)
E. coli Selection:	Kanamycin (25 ug/mL)



[View online »](#)

ORF Nucleotide Sequence:

>RC230343 representing NM_001177842
 Red=Cloning site Blue=ORF Green=Tags(s)

TTTTGTAATACGACTCACTATAGGGCGGCCGGAATTCGTCGACTGGATCCGGTACCGAGGAGATCTGCC
 GCC**CGGATCGCC**

ATGCTCGACTTCTCACCATTTTCTCCAAGGGCGGGCTTGCTCTGGTCTTCCAGGGCGTTAGCGACT
 CATGCACCGGACCGTTAACCGCTTGATTTCGTTCCGTGCTGCTGCAGTTGGTTTTCCAGAAGATCCTGAC
 ACTGACATATGTAGACAAATTGATAGATGACGTGCATCGCTGTTTCGGGACAAGTACCGCACAGAGATC
 CAACAGCAAAGTGCTTTAAGTTTATTAATGGCACTTTTGATTTCCAAAATGACTTCTGCGGCTCCTTC
 GTGAAGCAGAGGAGAGCAGTAAGATCCGTGCTCCACTACCATGAAGAAATTTGAAGATTCTGAAAAGGC
 CAAGAACTGTGAGTCCATGATTGAGACACGGGGGAAAAGCCCAAGGAAAAGCAAAGAATAGCAA
 AAAAAGGGGGCCAAAGAAGGAAGTTCTGATGGTCTTTGGCTACCAGCAAACAGTCCCTGCAGAAAAGT
 CAGGTCTCCAGTGGTCTGAGAACGGAGTAGAACTTTCAAAGAGGAGCTGATCCGCAGGAAGCGCGA
 GGAGTTCATTAGAAGCATGGGAGGGGTATGGAGAAGTCCAACAAGTCCCGAAGTCAGATGCTCCAAG
 GAGAAGGGCAAAAAGCACCCCGGGTGGGAAGTGGGTGGCTGTGCTAACAAAGAAGTGTGGATTACA
 GTACTCCACCAATGGAACCCCTGAGGCTGCCTTGTCTGAGGACATCAACCTGATTCGAGGGACTGG
 GTCTGGGGGCGAGCTTCCAGGATCTGGACTGCAGCAGCTCTGATGACGAAGGGGCTGCTCAAACTTACC
 AAACCTAGTGCACCAAGGGAACACTGGGTGGCATGTTTGGTATGCTGAAGGGCCTTGTGGGTTCAAAGA
 GCTTGAGTCGTGAAGACATGGAATCTGTCTGGACAAGATGCGTGATCATCTATTGCTAAGAAGCTGGC
 TGCAGACATTGCCGTCCAGCTCTGTGAATCTGTGCCAACAGTTGGAAGGAAGGTGATGGGGACGTTT
 AGCAGCGTGACTTCCACAGTAAAGCAAGCCCTACAGGAGTCCCTGGTGCAGATTCTGCAGCCACAGCGTC
 GTGTAGACATGCTCCGGGACATCATGGATGCCAGCGTCGCCAGCGCCCTTATGTCGTCACTTCTGCCG
 CGTTAATGGAGTGGGAAATCTACTAATCTTGCCAAGATTTCTTCTGGTTGTTAGAGAATGGCTTCAGT
 GTCCTCATTGCTGCCTGTGATACATTTCTGCTGGGGCCGTGGAGCAGCTGCGTACACACACCCCGCGTT
 TGAGTGCCTACACCCTCCAGAGAAGCATGGTGGCCGCACCATGGTGCAGTTGTTTGAAGGGGCTATGG
 CAAGGATGCTGCTGGCATTGCCATGGAAGCATTGCTTTTGCACGTAACCAAGGCTTTGACGTGGTGTG
 GTGGACACGGCAGGCCGATGCAAGACAATGCCCTCTGATGACTGCCCTGGCCAAACTCATTACTGTCA
 ATACACCTGATTTGGTGTGTTTGTAGGAGAAGCCTTAGTAGGCAATGAAGCCGTGGACCAGCTGGTCAA
 GTTCAACAGAGCCTTGGCTGACCATTCTATGGCTCAGACACCTCGGCTCATTGATGGCATTGTTCTTACC
 AAATTTGATACCATTGATGACAAGTGGGAGCTGCTATTTCTATGACGTACATCACAAGCAAACCCATCG
 TCTTTGTGGGCACCGCCAGACCTACTGTGACCTACGCAGCCTCAATGCCAAGGCTGTGGTGGCTGCCCT
 CATGAAGGCT

AG**CGGACCG**ACGCGTACGCGGCCGCTCGAGCAGAACTCATCTCAGAAGAGGATCTGGCAGCAAATGATATCC
 TGGATTACAAGGATGACGACGATAAGGTTAA

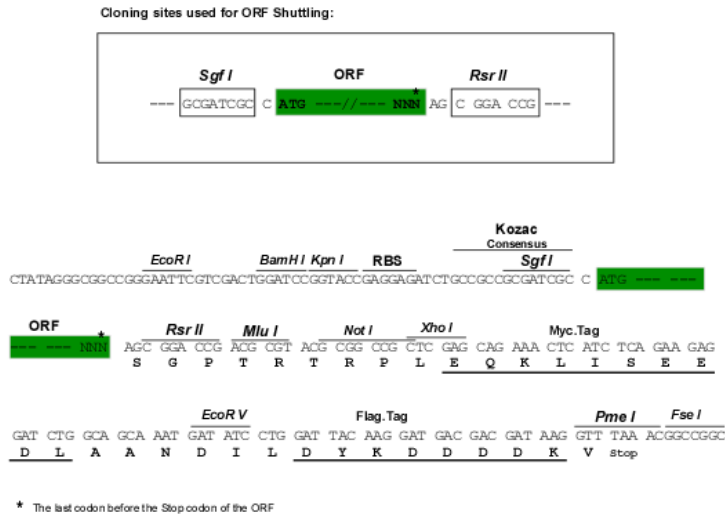
Protein Sequence:

>RC230343 representing NM_001177842
 Red=Cloning site Green=Tags(s)

MLDFFTFISKGLVLCWFQGVSDSCTGPVNALIRSVLLQVGFQKILTLTYVDKLIIDVHRLFRDKYRTEI
 QQQSALSLLNGTFDFQNDLRLREAEESKIRAPTTMKKFEDEKAKKPVRSMIETRGEKPEKAKNSK
 KKGAKKEGSDGPLATSKPVPAEKSGLPVGPENGVLSKEELIRRKREEFIQKHGRGMEKSNKSTKSDAPK
 EKGKKAPRVWELGGCANKEVLDYSTPTTNGTPEAALSEDINLIRGTGSGGQLQDLDCSSSDDEGAAQNST
 KPSATKGTLLGGMFGMLKGLVGSKSLSREDMESVLDKMRDHLIAKNVAADIAVQLCESVANKLEKVMGTF
 STVTSTVKQALQESLVQILQPQRVDMRLRIMDAQRRQRPYVVFVFCGVNGVVKSTNLAKISFWLLENGFS
 VLIAACDTFRAGAVEQLRTHTRRLSALHPPEKHGGRTMVQLFEKGYGKDAAGIAMEAIAFARNQGFVVL
 VDTAGRMQDNAPLMTALAKLITVNTPLVLFVGEALVGNEAVDQLVKFNALADHSMAQTPRLIDGIVLT
 KFDTIDDKVGAASIMTYITSKPIVFGTGTQTYCDLRSLSNAKAVVAALMKA

SGP**TRRRLEQKLI**SEEDLAANDILDYKDDDDKV

Chromatograms: https://cdn.origene.com/chromatograms/mk8036_d04.zip
Restriction Sites: SgfI-RsrII
Cloning Scheme:



ACCN: NM_001177842
ORF Size: 1830 bp

OTI Disclaimer: The molecular sequence of this clone aligns with the gene accession number as a point of reference only. However, individual transcript sequences of the same gene can differ through naturally occurring variations (e.g. polymorphisms), each with its own valid existence. This clone is substantially in agreement with the reference, but a complete review of all prevailing variants is recommended prior to use. [More info](#)

OTI Annotation: This clone was engineered to express the complete ORF with an expression tag. Expression varies depending on the nature of the gene.

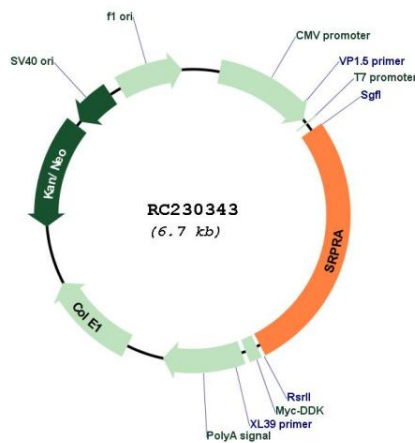
Components: The ORF clone is ion-exchange column purified and shipped in a 2D barcoded Matrix tube containing 10ug of transfection-ready, dried plasmid DNA (reconstitute with 100 ul of water).

- Reconstitution Method:**
 1. Centrifuge at 5,000xg for 5min.
 2. Carefully open the tube and add 100ul of sterile water to dissolve the DNA.
 3. Close the tube and incubate for 10 minutes at room temperature.
 4. Briefly vortex the tube and then do a quick spin (less than 5000xg) to concentrate the liquid at the bottom.
 5. Store the suspended plasmid at -20°C. The DNA is stable for at least one year from date of shipping when stored at -20°C.

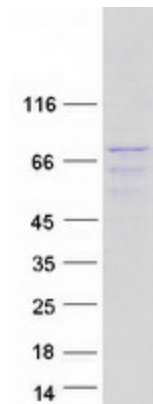
RefSeq: [NM_001177842.1](#), [NP_001171313.1](#)
RefSeq ORF: 1833 bp
Locus ID: 6734

UniProt ID: [P08240](#)
Cytogenetics: 11q24.2
Protein Families: Druggable Genome
Protein Pathways: Protein export
MW: 67 kDa
Gene Summary: The gene encodes a subunit of the endoplasmic reticulum signal recognition particle receptor that, in conjunction with the signal recognition particle, is involved in the targeting and translocation of signal sequence tagged secretory and membrane proteins across the endoplasmic reticulum. Alternative splicing results in multiple transcript variants. [provided by RefSeq, Apr 2010]

Product images:



Circular map for RC230343



Coomassie blue staining of purified SRPRA protein (Cat# [TP330343]). The protein was produced from HEK293T cells transfected with SRPRA cDNA clone (Cat# RC230343) using MegaTran 2.0 (Cat# [TT210002]).