

## Product datasheet for **RC230335**

### ASMTL (NM\_001173474) Human Tagged ORF Clone

#### Product data:

Product Type:	Expression Plasmids
Product Name:	ASMTL (NM_001173474) Human Tagged ORF Clone
Tag:	Myc-DDK
Symbol:	ASMTL
Synonyms:	ASMTLX; ASMTLY; ASTML
Mammalian Cell Selection:	Neomycin
Vector:	pCMV6-Entry (PS100001)
E. coli Selection:	Kanamycin (25 ug/mL)



[View online »](#)

**ORF Nucleotide Sequence:**

>RC230335 representing NM\_001173474  
 Red=Cloning site Blue=ORF Green=Tags(s)

TTTTGTAATACGACTCACTATAGGGCGGCCGGAATTCGTCGACTGGATCCGGTACCGAGGAGATCTGCC  
 GCC**CGCATCGCC**

ATGGTGTGTGCCGGTGATTGGGAAGCTGCTGCACAAGCGCGTGGTGTGGCCAGCGCCTCCCCACGCC  
 GTCAGGAGATCCTCAGCAACCGGGTCTCAGGTTTGAGGTGGTCCCTCCAAGTTTAAAGAGAAGCTGGA  
 CAAAGCCTCCTTCGCTACTCCGTATGGGTACGCCATGGAGACCGCAAGCAGAAGGCCCTGGAGGTGGCC  
 AACCGGCTGTACCAGACAGTCGGGGGGCTGATTCTGGAGAAGCCGGTGGACAAGCAGGACGCCTACAGGA  
 TGCTGTCCCGGTTGAGTGGGAGAGAACACAGCGTGTTCACAGGTGTGCGGATCGTCCACTGCTCCAGCAA  
 AGACCATCAGCTGGACACCAGGGTCTCGGAATTCTACGAGGAAACGAAGGTGAAGTTCTCGGAGCTGTCC  
 GAGGAGCTGCTCTGGGAATACGTCCACAGCGGGAGCCCATGGACAAAGCTGGCGGCTACGGGATCCAGG  
 CCCTGGGCGGCATGCTGGTGGAGTCCGTACACGGGGACTTCTGAACGTGGTGGGATTCCCCTGAACCA  
 CTTCTGCAAGCAGCTGGTGAAGTCTACTACCCGCCCGTCCGGAGGACCTGCGGCGGAGTGTCAAGCAC  
 GACTCCATCCCGCCCGGACACCTTCAAGACCTCAGTGACGTGGAGGGGGCGGCTCGGAGCCCACTC  
 AGAGGGACGCGGGCAGCCGCGATGAGAAGGCCGAGGCGGGAGAGGCGGGACAGGCCACGGCAGAGGCTGA  
 GTGTCACAGGACTCGGGAGACCTGCCTCCGTTCCCGACACGCCTCCTGGAGCTGATTGAGGGCTTTATG  
 CTATCCAAGGGCTGCTCACCCTTGCAAAGTGAAGGTGTTGATTTGTTAAAAGATGAAGCACCCCAAGA  
 AGGCTGCGGATATTGCCAGCAAAGTGGACGCCTCTGCGTGTGGAATGGAGAGGCTTCTGGACATCTGTG  
 TGCCATGGGGCTCCTGGAGAAGCAGAGCAAGTTACAGTAACACAGAGACAGCGAACGTCTACCTGGCA  
 TCGGATGGCGAATACTCTGACCGCTTCATCATGCACAATAATGACCTCACATGGAACCTCTTTACAT  
 ACCTGGAGTTTGCCATCCGAGAGGGAACAAACACAGCCACAGGGCGTTGGGAAGAAGCGGAAGATCT  
 GTTCCAGGATGCGTACTACCAGAGCCCGGAGACGCGGCTGAGGTTTCATGCGGGCCATGCACGGCATGACG  
 AAGCTGACTGCGTGCCAGGTGGCCACGGCTTCAATCTGTCCCGCTTCTCCTCCGCTGCGACGTGGGAG  
 GCTGCACGGGTGCACTGGCCGAGAGCTGGCCCGTGAAGTACCCTCGTATGCAGGTGACTGTGTTGACCT  
 CCCAGACATTATCGAGCTGGCCGCCACTTCCAACCCCGGACCGCAGGCAGTGCAGATCCACTTCGCA  
 GCAGGTGACTTTTTAGGGACCCCTCCCAGCGCTGAGCTGTACGTCTGTGCCGGATCCTGCATGACT  
 GGCCAGACGACAAAGTCCACAAGTACTCAGCAGGTCGCGGAGAGCTGCAAGCCAGGGGCCGCGCTGCT  
 GCTGGTGGAGACGCTCCTGGATGAGGAGAAGAGGGTGGCGAGCGGCCCTGATGCAGTCACTGAACATG  
 CTGGTGCAGACTGAAGGCAAGGAGCGGAGCCTGGCGAGTATCAGTGCTTGTGGAGCTGCACGGCTTCC  
 ACCAGGTGCAGGTGGTGCCTTGGGGGGTGTCTGGATGCCATCTTGCCACCAAAGTGGCCCC

**ACGCGT**ACGCGGGCCGCTCGAGCAGAAACTCATCTCAGAAGAGGATCTGGCAGCAAATGATATCCTGGATT  
 ACAAGGATGACGACGATAAGGTTTAA

**Protein Sequence:**

>RC230335 representing NM\_001173474  
 Red=Cloning site Green=Tags(s)

MVLCPIVIGKLLHKRVVLASASPRRQEILSNAGLRFVVPVSKFKEKLDKASFATPYGYAMETAKQKALEVA  
 NRLYQTVGGILEKPVDKQDAYRMLSRLSGREHSVFTGVIVHCSKDHQLDTRVSEFYEETKVKFSELS  
 EELLWEYVHSGEPMKAGGYGIQALGGMLVESVHGDFLNIVVGFPLNHFCKQLVKLYPPRPEDLRRSVKH  
 DSIPAADTFEDLSDVEGGSEPTQRDAGSRDEKAEAGEAQATAEAECRTRETLPFPTRLLELIEGFM  
 LSKGLLTACKLKVFDLLKDEAPQKAADIASKVDAACGMRLLDICAAMGLLEKTEQYSNTETANVYLA  
 SDGEYSLHGFIMHNDLWNLFYLEFAIREGNTQHHRALGKKAEDLFQDAYYQSPETRLRFMRAMHGMT  
 KLTACQVATAFNLSRFSSACDVGCTGALARELAREYPRMQVTVFDLPDIEIAAHFQPPGPQAVQIHFA  
 AGDFFRDPLPSAELYVLCRILHDWPDDKVHKLRSVAESCKPGAGLLLVETLLDEEKRVAQRALMQSLNM  
 LVQTEGKERSLGEYQCLLELHGFHQVQVHLGGVLDAILATKVAP

**TRTRPLEQKLI**SEEDLAANDILDYKDDDDKV

**Chromatograms:**

[https://cdn.origene.com/chromatograms/mk8069\\_d08.zip](https://cdn.origene.com/chromatograms/mk8069_d08.zip)

**Restriction Sites:** SgfI-MluI

**Cloning Scheme:**



**ACCN:** NM\_001173474

**ORF Size:** 1815 bp

**OTI Disclaimer:** The molecular sequence of this clone aligns with the gene accession number as a point of reference only. However, individual transcript sequences of the same gene can differ through naturally occurring variations (e.g. polymorphisms), each with its own valid existence. This clone is substantially in agreement with the reference, but a complete review of all prevailing variants is recommended prior to use. [More info](#)

**OTI Annotation:** This clone was engineered to express the complete ORF with an expression tag. Expression varies depending on the nature of the gene.

**Components:** The ORF clone is ion-exchange column purified and shipped in a 2D barcoded Matrix tube containing 10ug of transfection-ready, dried plasmid DNA (reconstitute with 100 ul of water).

- Reconstitution Method:**
1. Centrifuge at 5,000xg for 5min.
  2. Carefully open the tube and add 100ul of sterile water to dissolve the DNA.
  3. Close the tube and incubate for 10 minutes at room temperature.
  4. Briefly vortex the tube and then do a quick spin (less than 5000xg) to concentrate the liquid at the bottom.
  5. Store the suspended plasmid at -20°C. The DNA is stable for at least one year from date of shipping when stored at -20°C.

**Note:** Plasmids are not sterile. For experiments where strict sterility is required, filtration with 0.22um filter is required.

**RefSeq:** [NM\\_001173474.2](#)

**RefSeq ORF:** 1818 bp

**Locus ID:** 8623

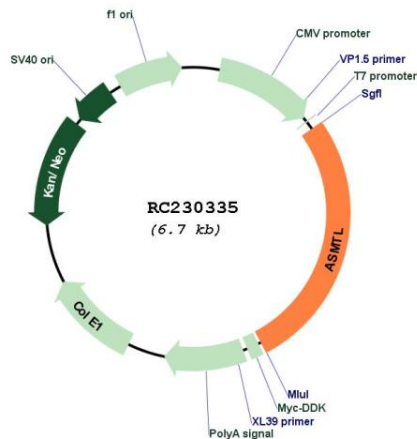
UniProt ID: [O95671](#)

Cytogenetics: X;Y

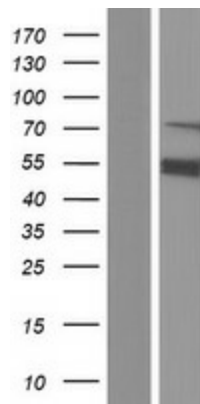
MW: 67.6 kDa

**Gene Summary:** The protein encoded by this gene has an N-terminus that is similar to the multicopy associated filamentation (maf) protein of *Bacillus subtilis* and to orfE of *Escherichia coli*, while the C-terminus is similar to N-acetylserotonin O-methyltransferase. This gene is located in the pseudoautosomal region 1 (PAR1) of X and Y chromosomes. Three transcript variants encoding different isoforms have been found for this gene. [provided by RefSeq, Mar 2010]

**Product images:**



Circular map for RC230335



Western blot validation of overexpression lysate (Cat# [LY433335]) using anti-DDK antibody (Cat# [TA50011-100]). Left: Cell lysates from untransfected HEK293T cells; Right: Cell lysates from HEK293T cells transfected with RC230335 using transfection reagent MegaTran 2.0 (Cat# [TT210002]).