

Product datasheet for **RC230331**

SIGLEC10 (NM_001171157) Human Tagged ORF Clone

Product data:

Product Type:	Expression Plasmids
Product Name:	SIGLEC10 (NM_001171157) Human Tagged ORF Clone
Tag:	Myc-DDK
Symbol:	SIGLEC10
Synonyms:	PRO940; SIGLEC-10; SLG2
Mammalian Cell Selection:	Neomycin
Vector:	pCMV6-Entry (PS100001)
E. coli Selection:	Kanamycin (25 ug/mL)



[View online »](#)

ORF Nucleotide Sequence:

>RC230331 representing NM_001171157
 Red=Cloning site Blue=ORF Green=Tags(s)

TTTTGTAATACGACTCACTATAGGGCGGCCGGAATTCGTCGACTGGATCCGGTACCGAGGAGATCTGCC
 GCC**CGGATCGCC**

ATGCTACTGCCACTGCTGCTGTCTCGCTGCTGGCGGGTCCAGGCTATGGATGGGAGATTCTGGATAC
 GAGTGCAGGAGTCACTGATGGTCCGGAGGGCCTGTGCATCTCTGTGCCCTGCTCTTTCTCTACCCCG
 ACAAGACTGGACAGGGTCTACCCAGCTTATGGCTACTGGTCAAAGCAGTGAAGTGAACAAAGGGT
 GCTCCTGTGGCCACAAACCAGAGTGCAGAGGTGAAATGAGCACCCGGGGCCGATTCCAGCTCACTG
 GGGATCCCGCAAAGGGAACTGCTCCTTGGTGATCAGAGACGCGCAGATGCAGGATGAGTCAAGTACTT
 CTTTCGGGTGGAGAGAGGAAGCTATGTGAGATAAATTCATGAACGATGGGTTCTTTCTAAAAGTAAAC
 GCCCTGACTCAGAAGCCTGATGTCTACATCCCGAGACCTGGAGCCCGGCAGCCGGTACGGTCACTCT
 GTGTGTTAACTGGCCCTTGGGAATGTCCACCCCTTCTTTCTCTGGACGGGGCTGCCCTCTCCTC
 CCAAGGAACCAACACGACCTCCACTTCTCAGTGCTCAGCTTACGCCCAGACCCAGGACCACAAC
 ACCGACCTCACCTGCCATGTGGACTTCTCCAGAAAGGGTGTGAGCGCACAGAGGACCGTCCGACTCCGTG
 TGGCCTATGCCCCAGAGACCTTGTATCAGCATTTCACGTGACAACACGCCAGCCCTGGAGCCCCAGCC
 CCAGGGAATGTCCCATACCTGGAAGCCAAAAAGGCCAGTTCCTGCGGGTCTCTGTGCTGCTGACAGC
 CAGCCCCCTGCCACTGAGCTGGTCTGCAGAACAGAGTCTCTCTCTCGTCCCATCCCTGGGGCCCTA
 GACCCCTGGGGCTGGAGCTGCCCGGGTGAAGGCTGGGGATTACAGGGCGTACACCTGCCGAGCGGAGAA
 CAGGCTTGGTCCCAGCAGCGAGCCCTGGACCTCTCTGTGCAGTATCCTCCAGAGAACCTGAGAGTGATG
 GTTCCCAAGCAAACAGGACAGTCTGGAAAACCTTGGAAACGGCACGTCTCTCCAGTACTGGAGGGCC
 AAAGCTGTGCCCTGGTCTGTGTACACACAGCAGCCCCAGCCAGGCTGAGCTGGACCCAGAGGGGACA
 GGTTCTGAGCCCTCCAGCCCTCAGACCCGGGGTCTGGAGCTGCCTCGGGTTCAAGTGGAGCACGAA
 GGAGAGTTCACCTGCCACGCTCGCACCCACTGGGCTCCAGCACGTCTCTCTCAGCCTCTCCGTGCACT
 ATAAGAAGGGACTCATCTCAACGGCATTCTCAACGGAGCGTTTCTGGGAATCGGCATCACGGCTCTTCT
 TTTCTCTGCCTGGCCCTGATCATCATGAAGATTCTACCGAAGAGACGGACTCAGACAGAAAACCCGAGG
 CCCAGGTTCTCCCGCACAGCAGTCTGGATTACATCAATGTGGTCCCAGCGGCTGGCCCCCTGGCTC
 AGAAGCGGAATCAGAAAGCCACACCAACAGTCTCGGACCCCTTCCACCAGGTGCTCCCTCCCAGA
 ATCAAAGAAGAACCAGAAAAAGCAGTATCAGTTGCCAGTTTCCAGAACCCAAATCATCCACTCAAGCC
 CCAGAATCCAGGAGAGCAAGAGGAGTCCATTATGCCAGCTCAACTCCCAGGCGTCAGACCCAGGC
 CTGAGGCCGGATGCCAAAGGGCACCCAGGCGGATTATGCAGAAGTCAAGTTCCAA

ACGCGTACGCGGGCCGCTCGAGCAGAAACTCATCTCAGAAGAGGATCTGGCAGCAAATGATATCCTGGATT
 ACAAGGATGACGACGATAAGGTTTAA

Protein Sequence:

>RC230331 representing NM_001171157
 Red=Cloning site Green=Tags(s)

MLLPLLLSSLLGGSQAMDGRFWIRVQESVMVEPLCISVPCSF SYPRQDWTGSTPAYGYWFKAVTETTKG
 APVATNHQSREVMSTRGRFQLTGDPKGNCSLVIRDAQMQDESQYFFRVERGSYVRYNFMNDGFFLKVT
 ALTQKPDVYIPETLEPGQPVTVICVFNWAFECPSPSFSWTGAALSSQGTKPTTSHFSVLSTPRPQDHN
 TDLTCHVDFSRKGVSAQRTVRLRVAYAPRDLVISIRDNTPALEPQPQGNVPYLEAQKGQFLRLCAADS
 QPPATLSWVLQNRVLSSSHWPGRPLGLELPGVKAGDSGRYTCRAENRLGSQQRALDLSVQYPPENLRVM
 VSQANRTVLENLNGTSLPVLEGQSLCLVCVTHSSPPARLSWTQRGQVLSQSPSDPGVLELPRVQVEHE
 GEFTCHARHPLGSQHVLSLSVHYKGLISTAFSNGAFLGIGITALLFLCLALIIMKILPKRRTQTETPR
 PRFSRHSTILDYINVVPTAGPLAQKRNQKATPNSPRTPLPPGAPSPESKKNQKQYQLPSFPEPKSSTQA
 PESQESQEELHYATLNFPGVRRPEARMPKGTQADYAEVKFQ

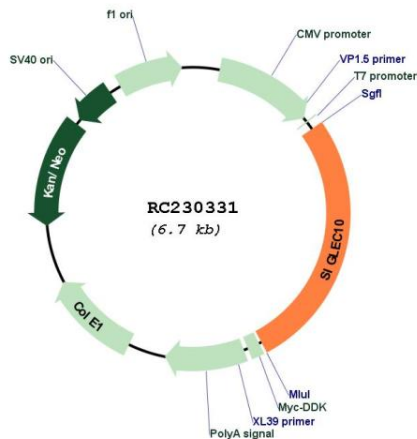
TRTRPLEQKLISEEDLAANDILDYKDDDDKV

Chromatograms:

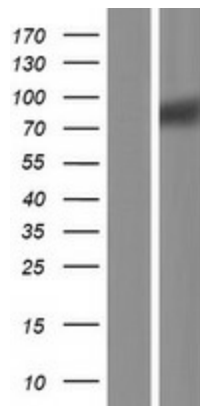
https://cdn.origene.com/chromatograms/mk8069_b12.zip

Cytogenetics: 19q13.41
Protein Families: Druggable Genome, Transmembrane
MW: 67.1 kDa
Gene Summary: SIGLECs are members of the immunoglobulin superfamily that are expressed on the cell surface. Most SIGLECs have 1 or more cytoplasmic immune receptor tyrosine-based inhibitory motifs, or ITIMs. SIGLECs are typically expressed on cells of the innate immune system, with the exception of the B-cell expressed SIGLEC6 (MIM 604405).[supplied by OMIM, Jul 2002]

Product images:



Circular map for RC230331



Western blot validation of overexpression lysate (Cat# [LY433331]) using anti-DDK antibody (Cat# [TA50011-100]). Left: Cell lysates from untransfected HEK293T cells; Right: Cell lysates from HEK293T cells transfected with RC230331 using transfection reagent MegaTran 2.0 (Cat# [TT210002]).