

Product datasheet for **RC230320**

GGA3 (NM_001172704) Human Tagged ORF Clone

Product data:

Product Type:	Expression Plasmids
Product Name:	GGA3 (NM_001172704) Human Tagged ORF Clone
Tag:	Myc-DDK
Symbol:	GGA3
Mammalian Cell Selection:	Neomycin
Vector:	pCMV6-Entry (PS100001)
E. coli Selection:	Kanamycin (25 ug/mL)



[View online »](#)

ORF Nucleotide Sequence:

>RC230320 representing NM_001172704
Red=Cloning site Blue=ORF Green=Tags(s)

TTTTGTAATACGACTCACTATAGGGCGGCCGGGAATTCGTCGACTGGATCCGGTACCGAGGAGATCTGCC
GCC**CGGATCGCC**

ATGGCCCTGCCAGAAGAAGCAAAGATCAAAGACGCTACCACATGCTGAAGAGACAGGGCATAGTGCAGT
CTGACCCACCAATTCCTGTGGATAGGACGCTGATCCCCTCTCCACCACCTCGTCCAAAAACCTGTTTT
TGATGATGAGGAGAAGTCCAAGCTTTTAGCCAAGCTGCTGAAAAGCAAAAACCCAGATGACCTGCAGGAG
GCCAACAAAGCTCATCAAGTCCATGGTGAAGGAAGACGAGGCACGGATCCAGAAGGTGACCAAGCGTCTGC
ACACGTTAGAGGAAGTTAAACAACAGTGAAGTCTGCTCAGTGAAGTGTCTTATTACAGCCAGGAGGA
CTCTTCGGACGGGACAGAGAGCTGATGAAGGAGCTGTTTGTGATCAGTGTGAGAACAAGAGCGGACTTTA
TTTAAACTCGCCAGTGAAGTGAAGTGAAGTGAAGTGAAGTGAAGTGAAGTGAAGTGAAGTGAAGTGAAGT
TCTCCCGGTTCATCAACTCTTACAAAACAATTATTGAAGGGCAGGTTCATCAATGGCGAGGTGGCTACCTT
AACCTGCCTGACTCGGAAGGAAACAGTCAAGTCAAGTCAAGTCAAGTCAAGTCAAGTCAAGTCAAGTCAAGT
GACACGACCAACAGTTTGTCTCCGTGTTGGCCCCAGCACCTACTCCACCCTCCTCAGGCATCCCAATCC
TCCTCCACCACCCAGGCCCTCAGGACCTCCACGGAGCCGCTCCTCTAGCCAGGCCGAGGCCACCCTGGG
GCCAGCAGCACAAAGCAACGCCCTCTCCTGGTGGACGAGGAGCTACTCTGCTTGGGCCCTCGCCAGCCCA
GCCCTAATGTTCTCCCAAAGAGTCAAGTCAAGTCAAGTCAAGTCAAGTCAAGTCAAGTCAAGTCAAGTCAAG
ACCTGGACTTCTCAGCCCCAGGCCGGGACCGCTGCCTGTGGCGCTCCGATGCTCCTCTGCTCCAGCC
CTCAGCCCCCTCCTCAAGCAGTCCCAAGTCCACTGCCGCTCCCTTCCAGCTCCTGTGGTCCAGCC
AGTGTTCCTGCCCCAGTGGCGGCTCCTCCTGTTTTCTACTGGAGTGGCCCCAGCCTTGGCCCCAAAAG
TTGAGCCCGCAGTCCCTGGCACCATGGCTTGGCGTGGGCAACAGCGCGCTGCACCACCTGGATGCCCT
CGATCAGCTTCTAGAAGAGGCCAAAGTGAAGTGAAGTGAAGTGAAGTGAAGTGAAGTGAAGTGAAGTGAAG
ACCACCACCCAGCCAGGCCCTCCTGCCTTCTCCACGGGGCCCGCAGCCCGCTTTCACGCCACTGA
GTTTCCAGTCCCAGGGCAGCCCCCGAAGGGGCTGAGCTCTCCTGGCCAGCATCCACGTGCCCTGGA
ATCGATCAAGCCTAGCAGTGCCTTCTGTGACAGCCTACGATAAAAACGGCTTCCGCATCCTCTCCAC
TTTGCCAAGGAGTGTCCCCAGGACGACCTGACGTGCTGGTGGTGGTGGTGGTGGTGGTGGTGGTGGTGGT
CCTTACCTGTCAAGAGCATCGTGTGCAGGCTGCAGTGCCAAGTCAATGAAAGTGAAGTGCAGCCACC
TTCTGGGACAGAATCTCTCATTAGCCCCATCCAGCCACTGCAGCCATCACCAGGTGATGTTGCTG
GCCAATCCACTGAAGAAGCAGTACTCAGCTTTCTGGAAAAGCGTGCCTCCAGCCGTGGGACAGGCCA
TCCTACTGACTACCTCTGCTTGCA

ACGCGTACGCGGCCGCTCGAGCAGAACTCATCTCAGAAGAGGATCTGGCAGCAAATGATATCCTGGATT
ACAAGGATGACGACGATAAGGTTTAA

Protein Sequence:

>RC230320 representing NM_001172704
Red=Cloning site Green=Tags(s)

MALPEEAKIKDAYHMLKRQIVQSDPPIPVDRITLIPSPPPRPKNPVFDDEEKSKLLAKLLKSKNPDDLQE
ANKLIKSMVKEDEARIQKVTKRLHLEEVNANNVRLSEMLLHYSQEDSSDGDRELMKELFDQCENKRRTL
FKLASETEDNDNSLGDILQASDNL SRVINSYKTIIEGQVINGEVATLTLDPSEGNSQCSNQGLIDLAEL
DTTNSLSSVLAPAPTPPSSGIPILPPPPQASGPPRSRSSQAEATLGPSSTSNALSWLDEELLCLGLADP
APNVPPKESAGNSQWHLQLREQSDLDFFSPRPGTAACGASDAPLLQPSAPSSSSSQAPLPPFPAPVVA
SVPAPSAGSSLFSTGVAPALAPKVEPAVPGHHGLALGNSALHHLDALDQLLEEAKVTSGLVKPTTSPLIP
TTTTPARPLLPFSTGPGSPLFQPLSFQSQGSPKGPPEL SLASIHVPLESIKPSALPVTAYDKNGFRILFH
FAKECPPGRPDVLVVVVSMNTAPLPVKSIVLQAAVPKSMKVKLQPPSGTELSPFSPIQPPAAITQVMLL
ANPLKKQVLSFLGKACLQPWGQAILLTTSCLA

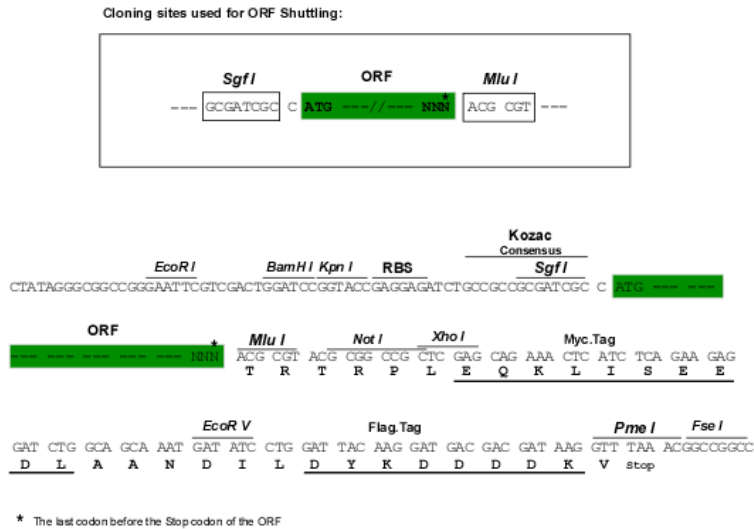
TRTRPLEQKLISEEDLAANDILDYKDDDDKV

Chromatograms:

https://cdn.origene.com/chromatograms/mk8068_g11.zip

Restriction Sites: SgfI-MluI

Cloning Scheme:



ACCN: NM_001172704

ORF Size: 1776 bp

OTI Disclaimer: The molecular sequence of this clone aligns with the gene accession number as a point of reference only. However, individual transcript sequences of the same gene can differ through naturally occurring variations (e.g. polymorphisms), each with its own valid existence. This clone is substantially in agreement with the reference, but a complete review of all prevailing variants is recommended prior to use. [More info](#)

OTI Annotation: This clone was engineered to express the complete ORF with an expression tag. Expression varies depending on the nature of the gene.

Components: The ORF clone is ion-exchange column purified and shipped in a 2D barcoded Matrix tube containing 10ug of transfection-ready, dried plasmid DNA (reconstitute with 100 ul of water).

Reconstitution Method:

1. Centrifuge at 5,000xg for 5min.
2. Carefully open the tube and add 100ul of sterile water to dissolve the DNA.
3. Close the tube and incubate for 10 minutes at room temperature.
4. Briefly vortex the tube and then do a quick spin (less than 5000xg) to concentrate the liquid at the bottom.
5. Store the suspended plasmid at -20°C. The DNA is stable for at least one year from date of shipping when stored at -20°C.

RefSeq: [NM_001172704.3](#)

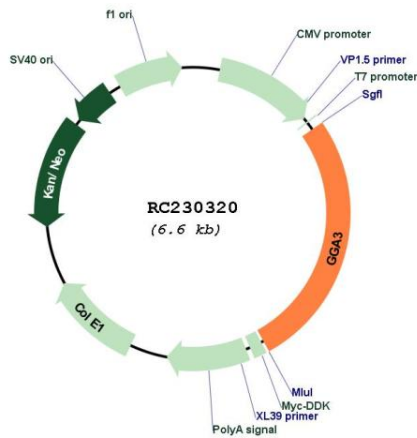
RefSeq ORF: 1779 bp

Locus ID: 23163

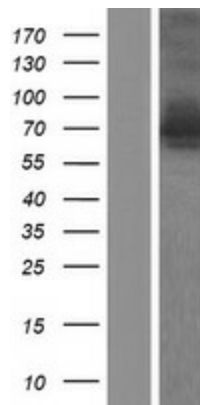
UniProt ID: [Q9NZ52](#)

Cytogenetics:	17q25.1
Protein Families:	Druggable Genome
Protein Pathways:	Lysosome
MW:	63.4 kDa
Gene Summary:	This gene encodes a member of the Golgi-localized, gamma adaptin ear-containing, ARF-binding (GGA) family. This family includes ubiquitous coat proteins that regulate the trafficking of proteins between the trans-Golgi network and the lysosome. These proteins share an amino-terminal VHS domain which mediates sorting of the mannose 6-phosphate receptors at the trans-Golgi network. They also contain a carboxy-terminal region with homology to the ear domain of gamma-adaptins. Multiple alternatively spliced transcript variants have been identified in this gene. [provided by RefSeq, Feb 2010]

Product images:



Circular map for RC230320



Western blot validation of overexpression lysate (Cat# [LY433320]) using anti-DDK antibody (Cat# [TA50011-100]). Left: Cell lysates from untransfected HEK293T cells; Right: Cell lysates from HEK293T cells transfected with RC230320 using transfection reagent MegaTran 2.0 (Cat# [TT210002]).