

## Product datasheet for **RC230305**

### FCAMR (NM\_001170631) Human Tagged ORF Clone

#### Product data:

Product Type:	Expression Plasmids
Product Name:	FCAMR (NM_001170631) Human Tagged ORF Clone
Tag:	Myc-DDK
Symbol:	FCAMR
Synonyms:	CD351; FCA/MR; FKSG87
Mammalian Cell Selection:	Neomycin
Vector:	pCMV6-Entry (PS100001)
E. coli Selection:	Kanamycin (25 ug/mL)



[View online »](#)

**ORF Nucleotide Sequence:**

>RC230305 representing NM\_001170631  
 Red=Cloning site Blue=ORF Green=Tags(s)

TTTTGTAATACGACTCACTATAGGGCGGCCGGGAATTCGTCGACTGGATCCGGTACCGAGGAGATCTGCC  
 GCC**CGGATCGCC**

ATGGATGGAGAGGCCACAGTGAAGCCTGGAGAACAAAAGGAAGTGGTGGAGAGAGGAAGAGAAGTGGACT  
 ACTCCAGGCTCATTGCTGGCACTTTACCACAATCTCACGTCACCAGCAGGAGGGCGGGATGGAAAATGCC  
 CCTCTTCTCATACTGTGCCTGTACAAGTCTTCTTTTCGCCCTTCCACAAAAAGACCCCATCCGAGA  
 TGGCTGTGGGAGGGCTCTCTCCCTCCAGGACCCATCTCCGGGCCATGGGAACACTCAGGCCTTCTCGC  
 CCCTCTGTGGCGGAGGAGAGCTCCTTTGCGAGCTCCAAATTCATTGAAGGGCTCAAGGCTGGTGTGAGG  
 GGAGCCTGGAGGAGCTGTACCATCCAGTGCATTATGCCCCCTCATCTGTCAACAGGCACCAGAGGAAG  
 TACTGGTGCCGTCTGGGGCCCCAAGATGGATCTGCCAGACCATTGTGTCCACCAACCAGTATACTACC  
 ATCGCTATCGTGACCGTGTGGCCCTCACAGACTTCCACAGAGAGGCTTGTGGTGGAGGCTGTCCCA  
 ACTGTCCCGGATGACATCGGATGCTACCTCTGCGGCATTGGAAGTGAACAACATGCTGTTCTTAAGC  
 ATGAATCTGACCATCTCTGCAGGTCGCCGACGCCCTCCACAGCCACTCCAGCTGCTGGGGAGCTCA  
 CCATGAGATCCTATGGAACAGCGTCTCCAGTGGCCAACAGATGGACCCAGGAACCCAGACCTTAGG  
 ACAGGGGACAGCATGGGACACAGTTGCTTCCACTCCAGGAACAGCAAGACTACAGCTTACAGCTGAGGGA  
 AGACGAACCCAGGAGCAACAGGCCAGCAGCTCCAGGGACAGGCAGCTGGGCAGAGGGTCTGTCAAAG  
 CACCTGCTCCGATTCCAGAGAGTCCACCTTCAAAGAGCAGAAGCATGTCCAATACAACAGAAGGTGTTTG  
 GGAGGGCACCAGAAGCTCGGTGACAAACAGGGCTAGAGCCAGCAAGGACAGGAGGAGATGACAACCTACC  
 AAGGCTGATAGGCCAAGGAGGACATAGAGGGGTGAGGATAGCTTGTGATGCAGCCAAAAGGTCTAG  
 GAACCATTTGGGCCACCAGCTCTGGTCTCAGAACTTTGGCTGGGAAATCTCCCAAGCAACGCCACTG  
 TTCTAAGCAACAATCTCAGGGTTCATTGGAGAAACAACCTCAGCTGCAGGCATGTGGACCTGGGAAT  
 CCAGCTGCAGATGTGTGGATCTTGGAACTCCAGCTGCAGATGTGTGGACCAGCATGGAGGCAGCATCTG  
 GGAAGGAAGCGCTGCAGGGGACCTAGATGCTGCCACTGGAGACAGAGGTCCCAAGCAACTGAGCCA  
 GACCCCGCAGTAGGACCCTGGGGACCCCTGGCAAGGAGTCTCCGTGAAGCGTACTTTCCAGAAGAT  
 GAAAGCAGCTCTCGACCTGGCTCCTGTCTACCATGCTGGCCCTGTTTATGCTTATGGCTCTGGTTC  
 TATTGCAAAGGAGCTCTGGAGAAGGAGACCTCTCAGGAGGCAGAAAGGGTACCTTAATTCAGATGAC  
 ACATTTCTGGAAGTGAACCCCAAGCAGACCAGCTGCCCATGTGGAAGAAAGATGCTCCAGGATGAC  
 TCTTCTCTGCTGGGGCCAGCCTGACTGCCCCAGAGAGAAATCCAGGACCC

**ACGCGT**ACGCGGGCCGCTCGAGCAGAAACTCATCTCAGAAGAGGATCTGGCAGCAAATGATATCCTGGATT  
 ACAAGGATGACGACGATAAGGTTTAA

**Protein Sequence:**

>RC230305 representing NM\_001170631  
 Red=Cloning site Green=Tags(s)

MDGEATVKPGEQKEVRRGREVDYSRLIAGTLPQSHVTSRRAGWKMPFLILCLLQGSFALPQKRPHPR  
 WLWEGSLPSRTHLRAMGTLRPSSPLCWREESSFAAPNSLKGSRVLSGEPGGAVTIQCHYAPSSVNRHQK  
 YWCRLGPPRWICQTIIVSTNQYTHHRYRDRVALTDFPQRGLFVVRLSQLSPDDIGCYLCGIGSENMLFLS  
 MNLTISAGPASTLPTATPAAGELTMRSYGTASPVANRWTPGTTQTLGQGTAWDTVASTPGTSKTTASAEG  
 RRTPGATRPAAPGTGSWAEGSVKAPAPIPESPPSKSRMSNTTEGVWEGTRSSVTNRARASKDRREMTT  
 KADRPREDIEGVRIALDAAKKVLGTIGPPALVSETLAWELPQATPVSKQSQSGETTPAAGMWTGTLGT  
 PAADVWILGTPAADVWTSMEAASGEGSAAGDLDAATGDRGPQATLSQTPAVGPWGPPEGKESVSRTPED  
 ESSSRTLAPVSTMLALFMLMALVLLQRKLWRRRTSQAERVTLIQMTHFLEVNPQADQLPHVERKMLQDD  
 SLPAGASLTAPERNP

**TR**TRPLEQKLISEEDLAANDILDYKDDDDKV

**Chromatograms:**

[https://cdn.origene.com/chromatograms/mk8007\\_c04.zip](https://cdn.origene.com/chromatograms/mk8007_c04.zip)

**Restriction Sites:**

Sgfl-Mlul

**Cloning Scheme:**


**ACCN:** NM\_001170631

**ORF Size:** 1731 bp

**OTI Disclaimer:** The molecular sequence of this clone aligns with the gene accession number as a point of reference only. However, individual transcript sequences of the same gene can differ through naturally occurring variations (e.g. polymorphisms), each with its own valid existence. This clone is substantially in agreement with the reference, but a complete review of all prevailing variants is recommended prior to use. [More info](#)

**OTI Annotation:** This clone was engineered to express the complete ORF with an expression tag. Expression varies depending on the nature of the gene.

**Components:** The ORF clone is ion-exchange column purified and shipped in a 2D barcoded Matrix tube containing 10ug of transfection-ready, dried plasmid DNA (reconstitute with 100 ul of water).

- Reconstitution Method:**
1. Centrifuge at 5,000xg for 5min.
  2. Carefully open the tube and add 100ul of sterile water to dissolve the DNA.
  3. Close the tube and incubate for 10 minutes at room temperature.
  4. Briefly vortex the tube and then do a quick spin (less than 5000xg) to concentrate the liquid at the bottom.
  5. Store the suspended plasmid at -20°C. The DNA is stable for at least one year from date of shipping when stored at -20°C.

**RefSeq:** [NM\\_001170631.2](#)

**RefSeq ORF:** 1734 bp

**Locus ID:** 83953

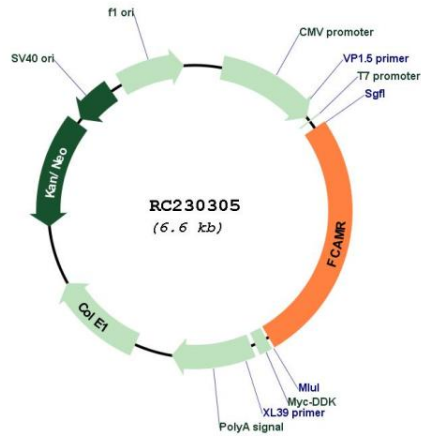
**Cytogenetics:** 1q32.1

**Protein Families:** Druggable Genome, Transmembrane

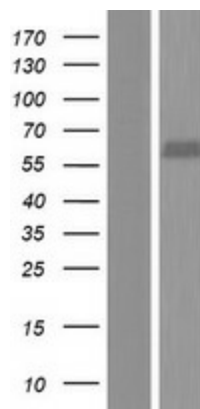
**MW:** 62.6 kDa

**Gene Summary:**

Functions as a receptor for the Fc fragment of IgA and IgM. Binds IgA and IgM with high affinity and mediates their endocytosis. May function in the immune response to microbes mediated by IgA and IgM.[UniProtKB/Swiss-Prot Function]

**Product images:**


Circular map for RC230305



Western blot validation of overexpression lysate (Cat# [LY433305]) using anti-DDK antibody (Cat# [TA50011-100]). Left: Cell lysates from untransfected HEK293T cells; Right: Cell lysates from HEK293T cells transfected with RC230305 using transfection reagent MegaTran 2.0 (Cat# [TT210002]).