

## Product datasheet for **RC230303**

### SCMH1 (NM\_001172220) Human Tagged ORF Clone

#### Product data:

Product Type:	Expression Plasmids
Product Name:	SCMH1 (NM_001172220) Human Tagged ORF Clone
Tag:	Myc-DDK
Symbol:	SCMH1
Synonyms:	Scml3
Mammalian Cell Selection:	Neomycin
Vector:	pCMV6-Entry (PS100001)
E. coli Selection:	Kanamycin (25 ug/mL)



[View online »](#)

**ORF Nucleotide Sequence:**

>RC230303 representing NM\_001172220  
 Red=Cloning site Blue=ORF Green=Tags(s)

TTTTGTAATACGACTCACTATAGGGCGGCCGGAATTCGTCGACTGGATCCGGTACCGAGGAGATCTGCC  
 GCC**CGGATCGCC**

ATGAAATTGGAAGCACAGGACCCAGGAACACCACATCCACCTGTATTGCCACAGTAGTTGGACTGACAG  
 GTGCCCGCTTCGCCTGCGCCTTGATGGGAGCGACAACAAAAATGACTTCTGGCGGCTGGTTGACTCAGC  
 TGAAATCCAGCCTATTGGGAAGTGTAAAAAGAATGGGGGTATGCTACAGCCACCTCTGGATTTCCGGCTG  
 AATGCGTCTTCTGGCCCATGTTCTTTTGAAGACGCTAAATGGAGCAGAGATGGCTCCCATCAGGATTT  
 TCCACAAGGAGCCACCATCGCCTCCCACAACCTCTTCAAATGGGAATGAAGCTAGAAGCTGTGGACAG  
 GAAGAACCCTCATTTATTTGCCAGCCACTATTGGGGAGGTTCCGGGCTCAGAGGTGCTTGTCACTTTT  
 GATGGGTGGCAGGGGCTTTGACTACTGGTCCGCTTCGACTCCCGAGACATCTCCCTGTGGGCTGGT  
 GTTCTTGACTGGAGACAACCTGCAGCCTCCTGGCACAAAGTTGTATTCAAAGAATCCCTATCTCTGC  
 CTCGATGTGAATACTGAGAAGCCAGCATCCACAGCAGCACAAAACCTGTCTTGAACATCAACCAGGG  
 CAGAGGGGGCGTAAACCAGGAAAGAAGCGGGGCCGACACCCAAGACCCTAATTTCCCATCCCATCTCTG  
 CCCATCCAAGACAGCTGAACCTTTGAAATTTCCAAAGAAGAGAGGTCCCAAACCTGGCAGCAAGAGGAA  
 ACCTCGGACTTTGCTGAACCCACCACCTGCCTCACCAACAACCAGCACTCCTGAACCGGATACCAGCACT  
 GTACCCAGGATGCTGCCACCATCCCCAGCTCAGCCATGCAGGCCCAACAGTTTGTATCTACTTGAACA  
 AGAATGGCAGCACAGGCCCCACTTAGATAAGAAGAAGGTCCAGCAACTCCCTGACCATTTTGGACCAGC  
 CCGTGCCTCTGTGGTGTGCAGCAGGCTGTCCAGGCTGTATCGACTGTGCTTATCACCAGAAAACCGTC  
 TTCAGTTCCTCAAGCAAGGCCATGGTGGTGAAGTTATCTCAGCCGTGTTGACCGGGAACAGCATACCC  
 TCAACCTCCCAGCAGTCAACAGCATCACCTACGCTCCGCTTCTGGAGAAACTGCCACAACCTTCG  
 TAGTGACAATCTGTTTGGCAACCAGCCCTTACACAGACTCACTTGTCACTCACTGCCATAGAGTACAGC  
 CACAGCCACGACAGGTACCTACCAGGTGAAACCTTTGCTCTGGGAATAGTCTGGCCCGCTCCTTGAAC  
 CACACTCAGACTCAATGGACTCTGCCTCAAATCCCACCAACCTTGTGAGCACCTCCCAAAGGCACCGGCC  
 CTTGCTTTCATCTGTGGCTCCACCAAGCACTGCCTCAGCTGTGCGCAGGCTATGCTCCAGGGGGTGC  
 GACCGATACCTGGAGAGCCGCGATGCCTCTGACTGAGTGGCCGGGACCCCTCCTCATGGACAGTCGAGG  
 ATGTGATGCAGTTTGTCCGGGAAGCTGATCCTCAGCTTGGACCCACGCTGACCTGTTTCGCAAACAGCA  
 GATCGATGGCAAGGCCCTGCTGCTGCTGCGCAGTGACATGATGATGAAGTACATGGGCTGAAGCTGGG  
 CCTGCACTCAAGCTCTCCTACCATTGACCGGCTGAAGCAGGGCAAGTTC

**ACGCGT**ACGCGGGCCGCTCGAGCAGAAACTCATCTCAGAAGAGGATCTGGCAGCAAATGATATCCTGGATT  
 ACAAGGATGACGACGATAAGGTTTAA

**Protein Sequence:**

>RC230303 representing NM\_001172220  
 Red=Cloning site Green=Tags(s)

MKLEAQDPRNTTSTCIATVVGLTGARLRLRLDGSNDKDFWRLVDSAEIQPIGNCEKNGGMLQPPLGFRL  
 NASSWPMFLKLTNGAEMAPIRIFHKEPPSPSHNFFKMGMKLEAVDRKNPHFICPATIGEVRGSEVLVTF  
 DGWRGAFDYWCRFDSRDIFPVGWCSLTGDNLQPPGKVVIPKNYPASDVNTEKPSIHSSTKTVLEHQPG  
 QRGRKPGKRRGTRPKTLISHPISAPSKTAEPLKFPKRRGPKPGSKRKPRTLLNPPASPTTSTPEPDTST  
 VPQDAATIPSSAMQAPTVCIIYLNKNGSTGPHLDKHKVQQLPDHFGPARASVVLQQAVQACIDCAYHQKTV  
 FSFLKQGHGGEVISAVIDREQHTLNLPAVNSITYVLRFLKLEKLNLRSDNLFNGQPFTQTHLSLTAIEYS  
 HSHDRYLPGETFVLGNSLARSLEPHSDSMSASNPNTLVSTSQRHRPLLSSCGLPPSTASAVRRLLCSRGS  
 DRYLESRDASRLSGRDPSSWTVEDVMQFVREADPQLGPHADLFRKHEIDGKALLLLRSDMMMKYMLKLG  
 PALKLSYHIDRLKQGKF

**TR**TRPLEQKLISEEDLAANDILDYKDDDDKV

**Chromatograms:**

[https://cdn.origene.com/chromatograms/mk8036\\_d09.zip](https://cdn.origene.com/chromatograms/mk8036_d09.zip)

**Restriction Sites:**

Sgfl-Mlul

**Cloning Scheme:**


**ACCN:** NM\_001172220

**ORF Size:** 1731 bp

**OTI Disclaimer:** The molecular sequence of this clone aligns with the gene accession number as a point of reference only. However, individual transcript sequences of the same gene can differ through naturally occurring variations (e.g. polymorphisms), each with its own valid existence. This clone is substantially in agreement with the reference, but a complete review of all prevailing variants is recommended prior to use. [More info](#)

**OTI Annotation:** This clone was engineered to express the complete ORF with an expression tag. Expression varies depending on the nature of the gene.

**Components:** The ORF clone is ion-exchange column purified and shipped in a 2D barcoded Matrix tube containing 10ug of transfection-ready, dried plasmid DNA (reconstitute with 100 ul of water).

- Reconstitution Method:**
1. Centrifuge at 5,000xg for 5min.
  2. Carefully open the tube and add 100ul of sterile water to dissolve the DNA.
  3. Close the tube and incubate for 10 minutes at room temperature.
  4. Briefly vortex the tube and then do a quick spin (less than 5000xg) to concentrate the liquid at the bottom.
  5. Store the suspended plasmid at -20°C. The DNA is stable for at least one year from date of shipping when stored at -20°C.

**RefSeq:** [NM\\_001172220.2](#)

**RefSeq ORF:** 1734 bp

**Locus ID:** 22955

**UniProt ID:** [Q96GD3](#)

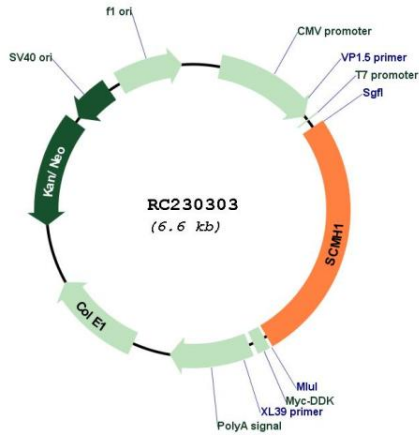
**Cytogenetics:** 1p34.2

**Protein Families:** Transcription Factors

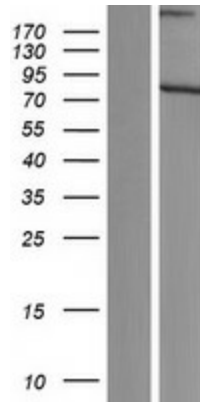
MW: 64.3 kDa

Gene Summary: Associates with Polycomb group (PcG) multiprotein complexes; the complex class is required to maintain the transcriptionally repressive state of some genes.[UniProtKB/Swiss-Prot Function]

Product images:



Circular map for RC230303



Western blot validation of overexpression lysate (Cat# [LY433303]) using anti-DDK antibody (Cat# [TA50011-100]). Left: Cell lysates from untransfected HEK293T cells; Right: Cell lysates from HEK293T cells transfected with RC230303 using transfection reagent MegaTran 2.0 (Cat# [TT210002]).