

Product datasheet for **RC230300**

ZFX (NM_001178086) Human Tagged ORF Clone

Product data:

Product Type:	Expression Plasmids
Product Name:	ZFX (NM_001178086) Human Tagged ORF Clone
Tag:	Myc-DDK
Symbol:	ZFX
Synonyms:	ZNF926
Mammalian Cell Selection:	Neomycin
Vector:	pCMV6-Entry (PS100001)
E. coli Selection:	Kanamycin (25 ug/mL)



[View online »](#)

ORF Nucleotide Sequence:

>RC230300 representing NM_001178086
 Red=Cloning site Blue=ORF Green=Tags(s)

TTTTGTAATACGACTCACTATAGGGCGGCCGGAATTCGTCGACTGGATCCGGTACCGAGGAGATCTGCC
 GCC**CGGATCGCC**

ATGACCATGGACACAGAGTCGGAATTGATCCTTGTAAGTGGATGGCACTTGCCTGAGGTCATCAAGG
 TGTACATTTTTAAAGCTGACCTGGAGAAGATGACTTAGGTGGAAGTGTAGACATTGTGGAGAGTGAGCC
 TGAGAATGATCATGGAGTTGAACTGCTTATCAGAACAGCAGTATTCGTGTTCCAGGAAAAGATTGGTT
 TATATGACTGTCAATGACTCTCAGCCAGAAGATGAAGATTTAAATGTTGCTGAAATCGCTGACGAAGTTT
 ATATGGAAGTGTGCTAGGAGAGGAGGATGCTGCAGCAGCAGCGCCGCGCCGTCACGAGCAGCA
 AATGGATGACAATGAAATCAAAACCTTCATGCCGATTGCATGGCAGCAGCTTATGGTAATAATTCTGAT
 GGAATTGAAAACCGAATGGCACTGCAAGTGCCCTCTGCACATAGATGAGTCTGCTGGCCTCGGCAGAC
 TGGCTAAACAAAACAAAGAAAAGGAGAAGACCTGATCCAGGCAGTACCAACAGCAATAATTATTGG
 CCCTGATGGACATCCTTTGACTGTCTATCCTTGCATGATTTGTGGGAAGAAGTTTAAAGTCGAGAGTTTT
 TTGAAAAGGCACATGAAAACCATCCCGAACACCTTGCCAAGAAGAAATACCGCTGTACTGACTGTGATT
 ACACTACCAACAAGAAGATAAGTTTACACAACCACCTGGAGAGCCACAAGCTGACCAGCAAGGCAGAGAA
 GGCCATTGAATGCGATGAGTGTGGGAAGCATTTCTCTCATGCAGGGGCTTTGTTTACTCACAAAATGGTG
 CATAAGGAAAAGGAGCCAACAAAATGCACAAGTGTAAATTTCTGTGAATACGAGACAGCTGAAACAAGGGT
 TATTGAATCGCCACCTCTTGGCAGTCCACAGCAAGAAGTTCCTCATATTTGTGTGGAGTGTGGTAAGGG
 TTTTCGTCACCCGTCAGAGCTCAAAAAGCAGATGAGAATCCATACTGGGGAGAAGCCGTACCAATGCCAG
 TACTCGGAATATAGGTCGACACTCTTCTAAGTGTGAAAACGCATGTCAAACTAAGCATAGTAAAGAGA
 TGCCATTCAAGTGTGACATTTGTCTTCTGACTTTCTCGGATACCAAGAGGTGCAGCAACATGCTCTTAT
 CCACCAAGAAAAGCAAAACACACCAAGTGTTCATTGCGACCACAAGAGTTCGAACCTCAAGTGATTTGAAA
 CGACACATAATTTAGTTTACACGAAAGACTACCCCATAAAGTGTGACATGTGTGATAAAGGCTTTTACA
 GGCTTCAGAAGTCAAGAAACACGTGGCTGCCACAAGGGCAAAAAATGCACCAAGTGTAGACATTTGTA
 CTTAAGATTGCAGATCCATTTGTTCTAAGTCGCCATATCTCTCAGTTCACACAAGGATCTTCCATTT
 AGGTGCAAGAGATGTAGAAAGGGATTTAGGCAACAGAGTGAAGTAAAAAGCATAGAACACACAGTG
 GCAGGAAAGTGTATCAGTGTGAGTACTGTGAGTATAGCACTACAGATGCCTCAGGCTTTAAACGGCACGT
 TATTTCCATTACACGAAAGACTATCCTCACCGGTGTGAGTACTGCAAGAAAGGCTTCGGAAGACCTTCA
 GAAAAGAACAGCACATAATGCGACATCATAAAGAAGTTGGCCTGCC

ACGCGTACGCGGCGGCTCGAGCAGAAACTCATCTCAGAAGAGGATCTGGCAGCAAATGATATCCTGGATT
 ACAAGGATGACGACGATAAGGTTTAA

Protein Sequence:

>RC230300 representing NM_001178086
 Red=Cloning site Green=Tags(s)

MTMDTESEIDPCKVDGTCPEVIKVIYIFKADPGEDDLGGTVDIVSEPENDHGVELLDQNSSIRVPREKMY
 YMTVNDSQPEDEDLNVAEIADEVYMEVIVGEEDAAAAAAAVHEQQMDDNEIKTFMPIAWAAAYGNNSD
 GIENRNGTASALLHIDESAGLGRKAKQPKKRRRPPDSRQYQTAAIIIGPDGHPLTVYPCMICGKFKSRGF
 LKRHMKNHPEHLAKKRYRCTDCDYTTNKKISLHNHLESHKLTSKAEKAIIECECGKHF SHAGALFTHKMV
 HKEKGANKMHKCKFCEYETAEQLLNRHLLAVHSKNFPHICVECGKGFRRHPSSELKHMRIHTGEKPYQCQ
 YCEYRSADSSNLKTHVKTKHSKEMPFKCDICLLTFSDTKEVQQHALIHQESKTHQCLHCDHKSSNSDLK
 RHIISVHTKDYPHKCDMCDKGFHRPSELKHHVAHKGKMMHQCRHCDFKIADPFVLSRHILSVHTKDLPF
 RCKRRCRKGFRQQSELKHKMKTSGRKYVQCEYCEYSTTDASGFKRHVISIHTKDYPHRCEYCKKGFRRPS
 EKNQHIMRHHKEVGLP

TRTRPLEQKLISEEDLAANDILDYKDDDDKV

Chromatograms:

https://cdn.origene.com/chromatograms/mk8068_a11.zip

Restriction Sites:

Sgfl-Mlul

Cloning Scheme:


ACCN: NM_001178086

ORF Size: 1728 bp

OTI Disclaimer: The molecular sequence of this clone aligns with the gene accession number as a point of reference only. However, individual transcript sequences of the same gene can differ through naturally occurring variations (e.g. polymorphisms), each with its own valid existence. This clone is substantially in agreement with the reference, but a complete review of all prevailing variants is recommended prior to use. [More info](#)

OTI Annotation: This clone was engineered to express the complete ORF with an expression tag. Expression varies depending on the nature of the gene.

Components: The ORF clone is ion-exchange column purified and shipped in a 2D barcoded Matrix tube containing 10ug of transfection-ready, dried plasmid DNA (reconstitute with 100 ul of water).

- Reconstitution Method:**
1. Centrifuge at 5,000xg for 5min.
 2. Carefully open the tube and add 100ul of sterile water to dissolve the DNA.
 3. Close the tube and incubate for 10 minutes at room temperature.
 4. Briefly vortex the tube and then do a quick spin (less than 5000xg) to concentrate the liquid at the bottom.
 5. Store the suspended plasmid at -20°C. The DNA is stable for at least one year from date of shipping when stored at -20°C.

RefSeq: [NM_001178086.1](#), [NP_001171557.1](#)

RefSeq ORF: 1731 bp

Locus ID: 7543

UniProt ID: [P17010](#)

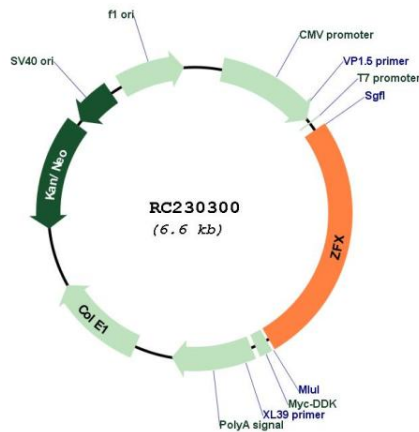
Cytogenetics: Xp22.11

Protein Families: Transcription Factors

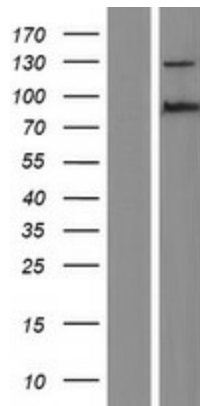
MW: 66.5 kDa

Gene Summary: This gene on the X chromosome is structurally similar to a related gene on the Y chromosome. It encodes a member of the krueppel C2H2-type zinc-finger protein family. The full-length protein contains an acidic transcriptional activation domain (AD), a nuclear localization sequence (NLS) and a DNA binding domain (DBD) consisting of 13 C2H2-type zinc fingers. Studies in mouse embryonic and adult hematopoietic stem cells showed that this gene was required as a transcriptional regulator for self-renewal of both stem cell types, but it was dispensable for growth and differentiation of their progeny. Multiple alternatively spliced transcript variants encoding different isoforms have been identified, but the full-length nature of some variants has not been determined. [provided by RefSeq, May 2010]

Product images:



Circular map for RC230300



Western blot validation of overexpression lysate (Cat# [LY433300]) using anti-DDK antibody (Cat# [TA50011-100]). Left: Cell lysates from untransfected HEK293T cells; Right: Cell lysates from HEK293T cells transfected with RC230300 using transfection reagent MegaTran 2.0 (Cat# [TT210002]).