

## Product datasheet for **RC230293**

### **PCTAIRE1 (CDK16) (NM\_001170460) Human Tagged ORF Clone**

#### **Product data:**

Product Type:	Expression Plasmids
Product Name:	PCTAIRE1 (CDK16) (NM_001170460) Human Tagged ORF Clone
Tag:	Myc-DDK
Symbol:	PCTAIRE1
Synonyms:	PCTAIRE; PCTAIRE1; PCTGAIRE; PCTK1
Mammalian Cell Selection:	Neomycin
Vector:	pCMV6-Entry (PS100001)
E. coli Selection:	Kanamycin (25 ug/mL)



[View online »](#)

**ORF Nucleotide Sequence:**

>RC230293 representing NM\_001170460  
 Red=Cloning site Blue=ORF Green=Tags(s)

TTTTGTAATACGACTCACTATAGGGCGGCCGGAATTCGTCGACTGGATCCGGTACCGAGGAGATCTGCC  
 GCC**CGCATCGCC**

ATGCCACTCTATGGCCGTGCTCGAGACCATGTCACCCATCCTTCAATTCTGGGCACACGCCCTGGCCGAC  
 CCATGGCTGGGCCATCACTGCAGCTGTACCTGAGAAGATCTGCAATGGAGCCTTCTGCTCTGCAGTGG  
 GGCTTTTCCCCTAGATCCCAACAATCCATCGTTAGGGCCCTTGCCTCAATCAGCCACCTAAATCTGAGA  
 ACTCAGATCGCCATGGATCGGATGAAGAAGATCAAACGGCAGCTGTCAATGACACTCCGAGGTGGCCGAG  
 GCATAGACAAGACCAATGGTGCCCTGAGCAGATAGGCCCTGGATGAGAGTGGTGGTGGCGGCAGTGA  
 CCCTGGAGAGGCCCCACACGTGCTGCTCTGGGAACTCGTTCTGCACGGGGCCCACTCAGCTCTGCA  
 CCAGAGATTGTGCACGAGGACTGAAGATGGGGTCTGATGGGGAGAGTGACCAGGCTTACGCCACGTCT  
 CGGATGAGGTGCAGTCTCCAGTGAGAGTGCATGCGCAACCATCCCCACGCAAGATCTCCACTGAGGA  
 CATCAACAAGCGCTATCACTACCAGCTGACATCCGGCTGCCTGAGGGCTACCTGGAGAAGCTGACCCCT  
 AATAGCCCATCTTTGACAAGCCCTCAGCCGCCGCTCCGTCTGTGAGCCTATCTGAGATTGGCTTTG  
 GGAAACTGGAGACCTACATTAAGCTGGACAAACTGGGCGAGGGTACCTATGCCACCCTACAAAAGGCAA  
 AAGCAAGCTCACAGACAACCTTGTGGCACTCAAGGAGATCAGACTGGAACATGAAGAGGGGGCACCTGC  
 ACCGCCATCCGGGAAGTGTCCCTGCTCAAGGACCTCAAACACGCCAACATCGTTACGCTACATGACATTA  
 TCCACACGGAGAAGTCCCTCACCTTGTCTTTGAGTACCTGGACAAGGACCTGAAGCAGTACCTGGATGA  
 CTGTGGGAACATCATCAACATGCACAACGTGAACTGTTCTGTCCAGCTGCTCCGTGGCTGGCTAC  
 TGCCACCGGCAGAAGGTGCTACACCGAGACCTCAAGCCCAGAACCTGCTCATCAACGAGAGGGAGAGC  
 TCAAGCTGGCTGACTTTGGCCTGGCCGAGCCAAGTCAATCCCAACAAGACATACTCCAATGAGTGGT  
 GACACTGTGGTACCGGCCCTGACATCCTGCTTGGGTCCACGGACTACTCCACTCAGATTGACATGTGG  
 GGTGTGGGCTGCATCTTCTATGAGATGGCCACAGGCCGTCCTCTTTCCGGGCTCCACGGTGGAGGAAC  
 AGCTACACTTCATCTTCCGTATCTTAGGAACCCCAACTGAGGAGACGTGGCCAGGCATCTGTCCAACGA  
 GGAGTTCAAGACATACTACCCCAAGTACCGAGCCGAGGCCCTTTGAGCCACGCACCCCGACTTGAT  
 AGCGACGGGGCCGACCTCTCACCAAGCTGTTGCAGTTTGGGGTCAAATCGGATCTCCGAGAGGATG  
 CCATGAAACATCCATTCTTCTCAGTCTGGGGAGCGGATCCACAACTTCTGACACTACTTCCATATT  
 TGCCTAAAGGAGATTGAGTACAAAAGGAGGCCAGCCTTCGGTCTTCGTCGATGCCTGACTCAGGCAGG  
 CCAGCTTCCGCGTGGTGGACACCGAGTTC

**ACGCGT**ACGCGGCCGCTCGAGCAGAACTCATCTCAGAAGAGGATCTGGCAGCAAATGATATCCTGGATT  
 ACAAGGATGACGACGATAAGGTTTAA

**Protein Sequence:**

>RC230293 representing NM\_001170460  
 Red=Cloning site Green=Tags(s)

MPLYGRARDHVTHPSILGTRPGRPMAGPITAAVPEKICNGAFSCSGAFPLDPNPNPLGPLPSISHLNLR  
 TQIAMDRMKKIKRQLSMTLRGGRGIDKTNGAPEQIGLDESGGGGSDPGEAPTRAAPGELRSARGPLSSA  
 PEIVHEDLKMGSDESDQASATSSDEVQSPVVRMRNHPPRKISTEDINKRLSLPADIRLPEGYLEKLT  
 NSPIFDKPLSRRLRRVSLSEIGFGKLETYIKLDKLGEGTYATVYKGSKSLTDNLVALKEIRLEHEEGAPC  
 TAIREVSLKDLKHANIVTLHDIHTEKSLTLVFEYLDKDLKQYLDCCGNIINMHNKFLFQLLRGLAY  
 CHRQKVLHRDLKPQNLLINERGLKLAFLARAKSIPTKYSNEVVTLWYRPPDILLGSTDYSTQIDMW  
 GVGCIIFYEMATGRPLFPGSTVEEQLHFIFRILGTPTEETWPGILSNEEFKTYNPKYRAEALLSHAPRLD  
 SDGADLLTKLLQFEGRNRISAEDAMKHPFFLSLGERIHKLPDTTIFALKEIQLQKEASLRSSMPDSDGR  
 PAFRVVDTEF

**TR**TRPLEQKLISEEDLAANDILDYKDDDDKV

**Chromatograms:**

[https://cdn.origene.com/chromatograms/mk8067\\_g07.zip](https://cdn.origene.com/chromatograms/mk8067_g07.zip)

**Restriction Sites:**

Sgfl-Mlul

Cloning Scheme:



ACCN: NM\_001170460

ORF Size: 1710 bp

OTI Disclaimer: The molecular sequence of this clone aligns with the gene accession number as a point of reference only. However, individual transcript sequences of the same gene can differ through naturally occurring variations (e.g. polymorphisms), each with its own valid existence. This clone is substantially in agreement with the reference, but a complete review of all prevailing variants is recommended prior to use. [More info](#)

OTI Annotation: This clone was engineered to express the complete ORF with an expression tag. Expression varies depending on the nature of the gene.

Components: The ORF clone is ion-exchange column purified and shipped in a 2D barcoded Matrix tube containing 10ug of transfection-ready, dried plasmid DNA (reconstitute with 100 ul of water).

- Reconstitution Method:
1. Centrifuge at 5,000xg for 5min.
  2. Carefully open the tube and add 100ul of sterile water to dissolve the DNA.
  3. Close the tube and incubate for 10 minutes at room temperature.
  4. Briefly vortex the tube and then do a quick spin (less than 5000xg) to concentrate the liquid at the bottom.
  5. Store the suspended plasmid at -20°C. The DNA is stable for at least one year from date of shipping when stored at -20°C.

RefSeq: [NM\\_001170460.1](#), [NP\\_001163931.1](#)

RefSeq ORF: 1713 bp

Locus ID: 5127

UniProt ID: [Q00536](#)

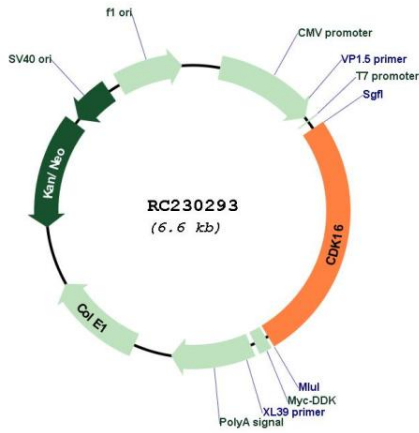
Cytogenetics: Xp11.3

Protein Families: Druggable Genome, Protein Kinase

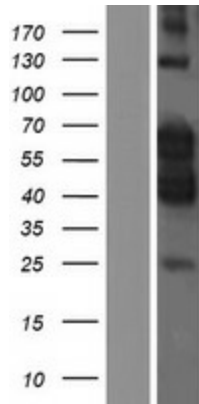
**MW:** 63.9 kDa

**Gene Summary:** The protein encoded by this gene belongs to the cdc2/cdkx subfamily of the ser/thr family of protein kinases. It may play a role in signal transduction cascades in terminally differentiated cells; in exocytosis; and in transport of secretory cargo from the endoplasmic reticulum. This gene is thought to escape X inactivation. Alternative splicing results in multiple transcript variants encoding different isoforms. [provided by RefSeq, Dec 2009]

**Product images:**



Circular map for RC230293



Western blot validation of overexpression lysate (Cat# [LY433293]) using anti-DDK antibody (Cat# [TA50011-100]). Left: Cell lysates from untransfected HEK293T cells; Right: Cell lysates from HEK293T cells transfected with RC230293 using transfection reagent MegaTran 2.0 (Cat# [TT210002]).