

Product datasheet for **RC230283**

STK23 (SRPK3) (NM_001170760) Human Tagged ORF Clone

Product data:

Product Type:	Expression Plasmids
Product Name:	STK23 (SRPK3) (NM_001170760) Human Tagged ORF Clone
Tag:	Myc-DDK
Symbol:	STK23
Synonyms:	MSSK-1; MSSK1; STK23
Mammalian Cell Selection:	Neomycin
Vector:	pCMV6-Entry (PS100001)
E. coli Selection:	Kanamycin (25 ug/mL)



[View online »](#)

ORF Nucleotide Sequence:

>RC230283 representing NM_001170760
 Red=Cloning site Blue=ORF Green=Tags(s)

TTTTGTAATACGACTCACTATAGGGCGGCCGGAATTCGTCGACTGGATCCGGTACCGAGGAGATCTGCC
 GCC**GCGATCGCC**

ATGAGCGCCAGCACGGGCGGTGGTGGGACAGCGCGGCAGCGGCGCAGTAGCAGCAGCTCACAGGCCT
 CCTGCGGGCCGAGTCTCGGGCTCCGAAGTACGCCTGGCCACACCGGTGCCTCAGATGCTGCAGGGCCT
 TCTGGGCTCCGACGACGAGGAACAGGAAGACCCAAAGACTACTGCAAGGGCGGCTACCACCTGTGAAG
 ATCGGCGACGTGTTCAATGGGCGGTACCACGTGGTGCGCAAAGTGGGCTGGGGCCACTTCTCCACCGTCT
 GGCTCTGCTGGGACATCCAGCGCAAGCGCTTTGTGGCCCTCAAAGTGGTGAAGAGTGCAGGGCATTACAC
 GGAGACAGCTGTGGATGAGATCAAGCTCCTGAAATGTGTCCGGGACAGCGACCCAGTGACCCAAAAGA
 GAGACCATTGTCCAGCTCATTGATGACTTCAGGATCTCAGGAGTCAATGGAGTCCATGTGTGCATGGTGC
 TGGAGGTGCTGGGCCACCAGCTCCTCAAATGGATCATCAAGTCCAAGTACCAGGGCCTGCCCGTCCCTG
 CGTGAAGAGCATCGTGAGGCAGGTGCTGCACGGCCTGGACTACCTCCACACCAAGTGCAAGATCATCCAC
 ACGGACATCAAGCCCAGAACATCTTGCTGTGTGTGGGGACGCTTACATCAGGGCCTGGCTGCCGAGG
 CCACGGAGTGGCAACAGGCAGGGGCGCCGCCCCCTCCCGCTCCATAGTCAGCACTGCCCCCCAGGAGGT
 CTTGACCGGTAAGCTGTCCAAAAACAAGAGGAAGAAGATGAGGCGCAAACGGAAACAGCAGAAGCGGCTG
 CTGGAGGAGCGGCTGCGGGACCTGCAGAGGCTGGAGGCCATGGAGGCTGCCACCCAGGCTGAGGACTCTG
 GCTTGAGACTAGACGGGGCAGCGGCTCCACATCCTCTTCAGGCTGTACCCCGGGGGCGCCAGAGCAGG
 TCCCTCCCAGCCTTCTCCTCCCCGCCAGGGGGCGGCGTAGCCTCAGCGCGGGCTCACAGACCTCA
 GGCTTCTCCGGCTCCCTTCTCTCCTGCTCCTGCTCCATCCTCCTCCGGCTCGTCCAATCAGCGAGAGA
 CCGGGGGCCTCCTGTGCCTAGCACACCATTCGTTGCTCGAACCTCCTGGTGAACCCCTGGAGCCCCA
 AAATGCAGATAAGATCAAGATCAAGATCGAGACTGGGCAACGCTGCTGGGTGCACAAGCACTTCACG
 GAAGACATCCAGACTCGGCAGTACCGGGCCGTCGAGGTGCTGATCGGCGCGAATACGGCCCCCGGCAG
 ACATCTGGAGCACAGCCTGCATGGCCTTCGAGCTGGCCACTGGTACTACCTGTTTCGAGCCGATTCTGG
 AGAAGACTACAGTCGTGATGAGGACCACATCGCTCACATAGTGGAGCTTCTGGGGACATCCCCCAGCC
 TTCGCCCTCTCAGGCCGCTATTCGGGAGTCTTCAACCGGAGAGGAGAGCTGCGGCACATCCACAATC
 TCAAGCACTGGGGCCTGTACGAGGTACTCATGAAAAGTACGAGTGGCCCTAGAGCAGGCCACACAGTT
 CAGCGCCTTTCTGCTGCCATGATGGAGTACATCCCCGAAAAGCGGGCCAGTGCCGCTGACTGCCTCCAG
 CACCCCTGGCTCAACCCC

ACGCGTACGCGGGCCGCTCGAGCAGAAACTCATCTCAGAAGAGGATCTGGCAGCAAATGATATCCTGGATT
 ACAAGGATGACGACGATAAGGTTTAA

Protein Sequence:

>RC230283 representing NM_001170760
 Red=Cloning site Green=Tags(s)

MSASTGGGDSGGSGSSSSQASCPSSGSELALATPVPQMLQGLLGSDDDEEQEDPKDYCKGGYHPVK
 IGDVFNTRYHVVRKLGWGHFSTVWLCWDIQRKRFVALKVVKSAHYTETAVDEIKLLKVRSDSPDPKR
 ETIVQLIDDFRISGVNNGVHVMVLEVLGHQLLKWIIKSNYQGLPVPVKSIVRQVLHGLDYLHTKCKIIH
 TDIKPENILLCVGDAYIRRLAAEATEWQQAGAPPSRSIVSTAPQEVLTGKLSKNKRKMRKRKQKRL
 LEERLRLQRLEAMEAATQAEDSGLRLDGGSGSTSSSGCHPGGARAGPSPASSSPAPGGGRSLSAGSOTS
 GFSGLFSPASCSILSGSSNQRETGLLSPSTPFGASNLLVNPLEPQNADKIKIKIADLGNACWVHKHFT
 EDIQTRQYRAVEVLIGAEYGPADIWSTACMAFELATGDYLFEPHSGEDYSRDEDHIAHIVELLGDIPPA
 FALSGRYSREFFNRRGELRHIHNLKHWGLYEVLMEKYEWPLEQATQFSAFLLPMMEYIPEKRASAADCLQ
 HPWLN

TRTRPLEQKLISEEDLAANDILDYKDDDDKV

Chromatograms:

https://cdn.origene.com/chromatograms/mk8067_e09.zip

Restriction Sites:

Sgfl-Mlul

Cloning Scheme:


ACCN: NM_001170760

ORF Size: 1698 bp

OTI Disclaimer: The molecular sequence of this clone aligns with the gene accession number as a point of reference only. However, individual transcript sequences of the same gene can differ through naturally occurring variations (e.g. polymorphisms), each with its own valid existence. This clone is substantially in agreement with the reference, but a complete review of all prevailing variants is recommended prior to use. [More info](#)

OTI Annotation: This clone was engineered to express the complete ORF with an expression tag. Expression varies depending on the nature of the gene.

Components: The ORF clone is ion-exchange column purified and shipped in a 2D barcoded Matrix tube containing 10ug of transfection-ready, dried plasmid DNA (reconstitute with 100 ul of water).

- Reconstitution Method:**
1. Centrifuge at 5,000xg for 5min.
 2. Carefully open the tube and add 100ul of sterile water to dissolve the DNA.
 3. Close the tube and incubate for 10 minutes at room temperature.
 4. Briefly vortex the tube and then do a quick spin (less than 5000xg) to concentrate the liquid at the bottom.
 5. Store the suspended plasmid at -20°C. The DNA is stable for at least one year from date of shipping when stored at -20°C.

RefSeq: [NM_001170760.2](#)

RefSeq ORF: 1701 bp

Locus ID: 26576

UniProt ID: [Q9UPE1](#)

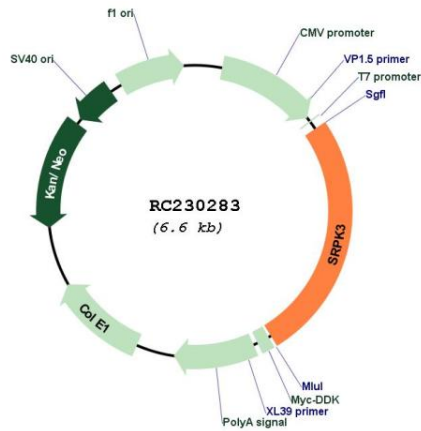
Cytogenetics: Xq28

Protein Families: Druggable Genome, Protein Kinase

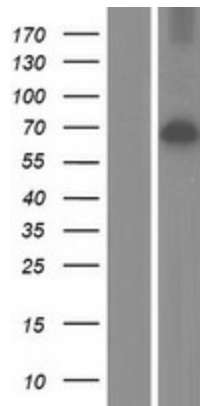
MW: 62.3 kDa

Gene Summary: This gene encodes a protein kinase similar to a protein kinase which is specific for the SR (serine/arginine-rich domain) family of splicing factors. A highly similar protein has been shown to play a role in muscle development in mice. Multiple transcript variants encoding different isoforms have been found for this gene. [provided by RefSeq, Dec 2009]

Product images:



Circular map for RC230283



Western blot validation of overexpression lysate (Cat# [LY433283]) using anti-DDK antibody (Cat# [TA50011-100]). Left: Cell lysates from untransfected HEK293T cells; Right: Cell lysates from HEK293T cells transfected with RC230283 using transfection reagent MegaTran 2.0 (Cat# [TT210002]).