

Product datasheet for **RC230245**

CARD8 (NM_001184900) Human Tagged ORF Clone

Product data:

Product Type:	Expression Plasmids
Product Name:	CARD8 (NM_001184900) Human Tagged ORF Clone
Tag:	Myc-DDK
Symbol:	CARD8
Synonyms:	CARDINAL; DACAR; DAKAR; NDPP; NDPP1; TUCAN
Mammalian Cell Selection:	Neomycin
Vector:	pCMV6-Entry (PS100001)
E. coli Selection:	Kanamycin (25 ug/mL)



[View online »](#)

ORF Nucleotide Sequence:

>RC230245 representing NM_001184900
 Red=Cloning site Blue=ORF Green=Tags(s)

TTTTGTAATACGACTCACTATAGGGCGGCCGGAATTCGTCGACTGGATCCGGTACCGAGGAGATCTGCC
 GCC**CGGATCGCC**

ATGGAAGAAAAGGAGTGTCCAGAAAAGAGTAGCAGCAGTGAAGGAGCTGCCGAGACGGGACAGTGGAT
 CCAGTAGGAACATAGATGCATCCAACTCATTAGACTACAAGGATCACGGAACCTGTTGGTTGACAATAG
 CATAACGGAACTGCAATACACAAAACTGGAATTTTTTTTCAGGCTGAGGCCTGTGTGACAAATGATACG
 GTATACAGGGAGCTACCTGTGTTTCTGAGACCTTTGTGACATCTCACATTTTTTCCAAGAAGATGATG
 AGACAGAGGCAGAGCCATTATTGTTCCGTGCTGTTCTGAGTGTCAACTATCTGGGGGGACATCCACG
 TGTATCAGAAGAGCAGGAATCTCAGAGGGACAAGATTCAGGAGACATTTGCTCAGAAGAGAATCAATA
 GTTTCCTCTTATGCTTCTAAAGTCTGTTTTGAGATCGAAGAAGATTATAAAAATCGTCAGTTTCTGGGGC
 CTGAAGGAAATGTGGATGTTGAGTTGATTGATAAGAGCACAAACAGATACAGCGTTTGGTCCCCACTGC
 TGGCTGGTATCTGTGGTCAGCCACAGGCCTCGGCTTCTGGTAAGGGATGAGTCCAGTACAGTACGATTGCG
 TTTGGTTCCTGGAGTCAGCACCTGGCCCTGGACCTGCAGACCATGAACAGTGGCTGGTGGGCGGCCCT
 TGTTTGATGTCAGAGCCAGAGGAGGCTGTCGCCGAAATCCACCTCCCCACTTCACTCCCTCCCA
 AGCAGGTGAGGTGGACGTCCTCGTGGCTTCTCGTTGCCATTTAAGAATGAAGGGATGGTCTGGAGCAT
 CCAGCCCGGGTGGAGCCTTTCTATGCTGTCTGGAAAGCCCGAGCTTCTCTCTGATGGGCATCCTGCTGC
 GGATCGCCAGTGGGACTCGCCTCTCCATCCCCATCACTCCAACACATTGATCTATTATCACCCCCACCC
 CGAAGATATTAAGTCCACTTGTACCTTGTCGCCAGCAGCCTTGCTAACAAAGGCGATAGATGATGAG
 GAAGATCGCTTCCATGGTGTGCGCCTGCAGACTCGCCCCAATGGAACCCCTGAACCTTTGGTCCAGTT
 ATATTGTGCTAATTCTGCTAACCTGAAAGTAATGCCAAGGAGTTGAAATGTCTACAGGAGCCCTGG
 AGAAATCAGCACTTCTCAAATTTCTATGCTGGGCAGATGAAGGAACCCATTCAACTTGAGATTACTGAA
 AAAAGACATGGGACTTTGGTGTGGGATACTGAGGTGAAGCCAGTGGATCTCCAGCTTGTAGCTGCATCAG
 CCCCTCTCTTTCTCAGGTGCAGCCTTTGTGAAGGAGAACCACCGCAACTCCAAGCCAGGATGGGGGA
 CCTGAAAGGGGTGCTCGATGATCTCCAAGACAATGAGGTTCTTACTGAGAATGAGAAGGAGCTGGTGGAG
 CAGGAAAAGACACGGCAGAGCAAGAATGAGGCCTTGTGAGCATGGTGGAGAAGAAAGGGGACCTGGCCC
 TGGACGTGCTCTCAGAAGCATTAGTGAAGGGACCTTACCTCGTGTCTATCTTAGACAGCAGAATTT
 G

ACGCGTACGCGGCCGCTCGAGCAGAACTCATCTCAGAAGAGGATCTGGCAGCAAATGATATCCTGGATT
 ACAAGGATGACGACGATAAGGTTTAA

Protein Sequence:

>RC230245 representing NM_001184900
 Red=Cloning site Green=Tags(s)

MEKKECPEKSSSSEELPRRDSGSSRNIDASKLIRLQGSRKLLVDNSIRELQYTKGIFQAEACVNDT
 VYRELPCVSETLCDISHFFQEDDETEAEPLLFRVPEQQLSGGDIPSVSEEQESSEGGQDSGDICSEENQI
 VSSYASKVCFEIEEDYKNRQFLGPEGNDVVELIDKSTNRYSVWFPTAGWYLWSATGLGFLVRDEVTVIA
 FGSWSQHLALDLQHHEQWL VGGPLFDVTAEPPEAVAEIHLPHFISLQAGEVDVSWFLVAHFKNEMVLEH
 PARVEPFYAVLESFSLMGILLRIASGTRL SIPITSNTLIYYHPHPEDIKFHLYLVPDALLTKAIDDE
 EDRFHGVRQLTSPMEPLNFGSSYIVSNSANLKVMPKELKLSYRSPGEIQHF SKFYAGQMKEPIQLEITE
 KRHGTLVWDTEVKPVDLQLVAASAPPPFSGAAFVKENHRQLQARMGDLKGVLDLQDNEVL TENEKELVE
 QEKTRQSKNEALLSMVEKKGDLALDVLFRSISERDPYLVSYLRQQNL

TRTRPLEQKLI SEEDLAANDILDYKDDDDKV

Chromatograms:

https://cdn.origene.com/chromatograms/mk8036_f10.zip

Restriction Sites:

Sgfl-Mlul

Cloning Scheme:


ACCN: NM_001184900

ORF Size: 1611 bp

OTI Disclaimer: The molecular sequence of this clone aligns with the gene accession number as a point of reference only. However, individual transcript sequences of the same gene can differ through naturally occurring variations (e.g. polymorphisms), each with its own valid existence. This clone is substantially in agreement with the reference, but a complete review of all prevailing variants is recommended prior to use. [More info](#)

OTI Annotation: This clone was engineered to express the complete ORF with an expression tag. Expression varies depending on the nature of the gene.

Components: The ORF clone is ion-exchange column purified and shipped in a 2D barcoded Matrix tube containing 10ug of transfection-ready, dried plasmid DNA (reconstitute with 100 ul of water).

- Reconstitution Method:**
1. Centrifuge at 5,000xg for 5min.
 2. Carefully open the tube and add 100ul of sterile water to dissolve the DNA.
 3. Close the tube and incubate for 10 minutes at room temperature.
 4. Briefly vortex the tube and then do a quick spin (less than 5000xg) to concentrate the liquid at the bottom.
 5. Store the suspended plasmid at -20°C. The DNA is stable for at least one year from date of shipping when stored at -20°C.

Note: Plasmids are not sterile. For experiments where strict sterility is required, filtration with 0.22um filter is required.

RefSeq: [NM_001184900.3](#)

RefSeq ORF: 1614 bp

Locus ID: 22900

UniProt ID: [Q9Y2G2](#)

Cytogenetics: 19q13.33

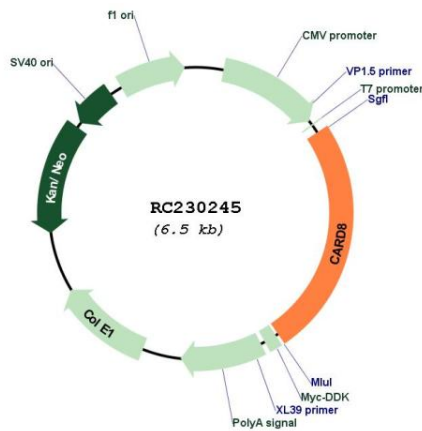
Protein Families: Druggable Genome

Protein Pathways: NOD-like receptor signaling pathway

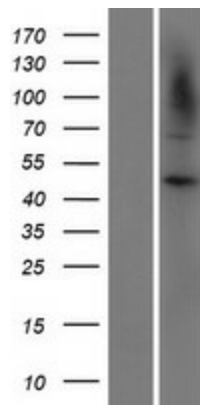
MW: 61.1 kDa

Gene Summary: The protein encoded by this gene belongs to the caspase recruitment domain (CARD)-containing family of proteins, which are involved in pathways leading to activation of caspases or nuclear factor kappa-B (NFkB). This protein may be a component of the inflammasome, a protein complex that plays a role in the activation of proinflammatory caspases. It is thought that this protein acts as an adaptor molecule that negatively regulates NFkB activation, CASP1-dependent IL1B secretion, and apoptosis. Polymorphisms in this gene may be associated with a susceptibility to rheumatoid arthritis. Alternatively spliced transcript variants have been described for this gene. [provided by RefSeq, May 2010]

Product images:



Circular map for RC230245



Western blot validation of overexpression lysate (Cat# [LY433245]) using anti-DDK antibody (Cat# [TA50011-100]). Left: Cell lysates from untransfected HEK293T cells; Right: Cell lysates from HEK293T cells transfected with RC230245 using transfection reagent MegaTran 2.0 (Cat# [TT210002]).