

Product datasheet for **RC230243**

HABP2 (NM_001177660) Human Tagged ORF Clone

Product data:

Product Type:	Expression Plasmids
Product Name:	HABP2 (NM_001177660) Human Tagged ORF Clone
Tag:	Myc-DDK
Symbol:	HABP2
Synonyms:	FSAP; HABP; HGFAL; NMTC5; PHBP
Mammalian Cell Selection:	Neomycin
Vector:	pCMV6-Entry (PS100001)
E. coli Selection:	Kanamycin (25 ug/mL)



[View online »](#)

ORF Nucleotide Sequence:

>RC230243 representing NM_001177660
 Red=Cloning site Blue=ORF Green=Tags(s)

TTTTGTAATACGACTCACTATAGGGCGGCCGGAATTCGTCGACTGGATCCGGTACCGAGGAGATCTGCC
 GCC**GCGATCGCC**

ATGTCTTTATTGAAAGCCTGGACCCAGACTGGACCCCTGACCAGTATGATTACAGCTACGAGGATTATA
 ATCAGGAAGAGAACCAGTAGCACACTTACCCACGCTGAGAATCCTGACTGGTACTACACTGAGGACCA
 AGCTGATCCATGCCAGCCCAACCCTGTGAACACGGTGGGGACTGCCTCGTCCATGGGAGACCTTCACA
 TGCAGTGCCTGGCTCCTTTCTCTGGGAATAAGTGTGAGAAAGTGCAAAATACGTGCAAGGACAACCCAT
 GTGGCCGGGGCAATGTCTCATTACCCAGAGTCTCCCTACTACCCTGTGTCTGTAAACACCCCTTACAC
 AGGTCCCAGTGTCCCAAGTGGTTCCTGTATGCAGGCCAAACCCTGCCAGAATGGGGTACTCTGCTCC
 CGGCATAAGCGGAGATCCAAGTTCACCTGTGCCTGTCCCGACCAGTTCAGGGGAAATCTGTGAAATAG
 GTTCTGATGACTGCTATGTTGGCGATGGCTACTTACCAGGGGAAAATGAATAGGACAGTCAACCAGCA
 TGGCTGCCTTTACTGGAACCTCCACCTCCTTTCAGGAGAATTACAACATGTTTATGGAGGATGCTGAA
 ACCCATGGGATTGGGGAACACAATTTTCAGAAACCCAGATGCGGACGAAAAGCCCTGGTGCTTTATTA
 AAGTTACCAATGACAAGGTGAAATGGGAATACTGTGATGTCTCAGCCTGCTCAGCCCAGGACGTTGCCTA
 CCCAGAGGAAAGCCCACTGAGCCATCAACCAAGCTTCCGGGTTTACTCCTGTGGAAAGACTGAGATA
 GCAGAGAGGAAGATCAAGAGAATCTATGGAGGCTTAAAGACACGGCGGGCAAGCACCCATGGCAGGCGT
 CCCTCCAGTCTCGCTGCCTCTGACCATCTCCATGCCCCAGGGCCACTTCTGTGGTGGGGCGCTGATCCA
 CCCCTGCTGGGTGCTCACTGTGCCACTGCACCGACATAAAACCAGACATCTAAAGGTGGTGTAGGG
 GACCAGGACCTGAAGAAAGAAGAATTTTCATGAGCAGAGCTTTAGGGTGGAGAAGATTTCAAGTACAGCC
 ACTACAATGAAAGAGATGAGATTTCCCAATGATATTGCATTGCTCAAGTTAAAGCCAGTGGATGGTCA
 CTGTGCTCTAGAATCCAATACGTGAAGACTGTGTGCTTGCCTGATGGGTCTTTCCCTCTGGGAGTGAG
 TGCCACATCTCTGGCTGGGTGTTACAGAAACAGGAAAAGGGTCCCGCCAGCTCCTGGATGCCAAAGTCA
 AGCTGATTGCCAACACTTTGTGCAACTCCCGCAACTCTATGACCACATGATTGATGACAGTATGATCTG
 TGCAGGAAATCTCAGAAACCTGGGCAAGACACTGCCAGGGTACTCTGGAGGCCCCCTGACCTGTGAG
 AAGGACGGCACCTACTACGTCTATGGGATAGTGAAGTGGGCTGGAGTGTGGGAAGAGGCCAGGGGTCT
 ACACCAAGTTACCAATTCCTGAATTGGATCAAAGCCACCATCAAAGTGAAGTGGCTTC

ACGCGTACGCGGCCGCTCGAGCAGAAACTCATCTCAGAAGAGGATCTGGCAGCAAATGATATCTGGATT
 ACAAGGATGACGACGATAAGGTTTAA

Protein Sequence:

>RC230243 representing NM_001177660
 Red=Cloning site Green=Tags(s)

MSLLESLDPDWTPDQYDYSYEDYNQEENTSSSTLTHAENPDWYYTEDQADPCQPNPCEHGGDCLVHGSTFT
 CSCLAPFSGNKQKQVQNTCKDNPCGRGQCLITQSPYYRCVCKHPYTGPCSCSQVVPVCRPNPCQNGATCS
 RHKRRSKFTACPDQFKGKFCIEIGSDDCYVGDGYSYRGKMNRTVNQHAELYWNSHLLQENYNMFMEDAE
 THGIGEHNFCRNPDADEKPCWFKIKVTNDKVKWEYCDVSACSAQDVAYPEESPTSTKLPGFDSCKTEI
 AERKIKRIYGGFKSTAGKHPWQASLQSSLPLTISMPQGHFCGGALIHPCWVLTAAHCTDIKTRHLKVVLG
 DQDLKKEEFHEQSFVKEIFKYSHYNERDEIPHNDIALLLKLPVDGHCALESKYVKTVCLPDGSFSPGSE
 CHISGWGVTETGKGSRQLLDAKVLIANTLCNSRQLYDHMIDDSMICAGNLQKPGQDTCQDSSGGPLTCE
 KDGTYVVYGVISWGLECGKRPVYTVTKFLNWKATIKSESSE

TRTRPLEQKLISEEDLAANDILDYKDDDDKV

Chromatograms:

https://cdn.origene.com/chromatograms/mk8065_h11.zip

Restriction Sites:

Sgfl-Mlul

Cloning Scheme:


ACCN: NM_001177660

ORF Size: 1602 bp

OTI Disclaimer: The molecular sequence of this clone aligns with the gene accession number as a point of reference only. However, individual transcript sequences of the same gene can differ through naturally occurring variations (e.g. polymorphisms), each with its own valid existence. This clone is substantially in agreement with the reference, but a complete review of all prevailing variants is recommended prior to use. [More info](#)

OTI Annotation: This clone was engineered to express the complete ORF with an expression tag. Expression varies depending on the nature of the gene.

Components: The ORF clone is ion-exchange column purified and shipped in a 2D barcoded Matrix tube containing 10ug of transfection-ready, dried plasmid DNA (reconstitute with 100 ul of water).

Reconstitution Method:

1. Centrifuge at 5,000xg for 5min.
2. Carefully open the tube and add 100ul of sterile water to dissolve the DNA.
3. Close the tube and incubate for 10 minutes at room temperature.
4. Briefly vortex the tube and then do a quick spin (less than 5000xg) to concentrate the liquid at the bottom.
5. Store the suspended plasmid at -20°C. The DNA is stable for at least one year from date of shipping when stored at -20°C.

RefSeq: [NM_001177660.2](#)

RefSeq ORF: 1605 bp

Locus ID: 3026

UniProt ID: [Q14520](#)

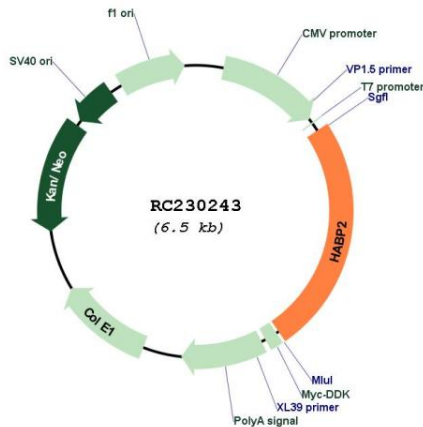
Cytogenetics: 10q25.3

Protein Families: Druggable Genome, Protease, Secreted Protein

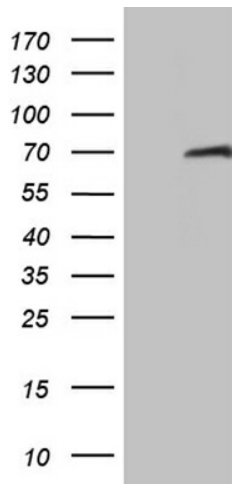
MW: 60.3 kDa

Gene Summary: This gene encodes a member of the peptidase S1 family of serine proteases. The encoded preproprotein is secreted by hepatocytes and proteolytically processed to generate heavy and light chains that form the mature heterodimer. Further autoproteolysis leads to smaller, inactive peptides. This extracellular protease binds hyaluronic acid and may play a role in the coagulation and fibrinolysis systems. Mutations in this gene are associated with nonmedullary thyroid cancer and susceptibility to venous thromboembolism. Alternative splicing results in multiple transcript variants, at least one of which encodes a preproprotein that is proteolytically processed. [provided by RefSeq, Jan 2016]

Product images:



Circular map for RC230243



HEK293T cells were transfected with the pCMV6-ENTRY control (Cat# [PS100001], Left lane) or pCMV6-ENTRY HABP2 (Cat# RC230243, Right lane) cDNA for 48 hrs and lysed. Equivalent amounts of cell lysates (5 ug per lane) were separated by SDS-PAGE and immunoblotted with anti-HABP2 antibody (Cat# [TA809338])(1:2000). Positive lysates [LY401333] (100ug) and [LC401333] (20ug) can be purchased separately from OriGene.