

Product datasheet for RC230240L1

SV2B (NM_001167580) Human Tagged Lenti ORF Clone

Product data:

Product Type:	Expression Plasmids
Product Name:	SV2B (NM_001167580) Human Tagged Lenti ORF Clone
Tag:	Myc-DDK
Symbol:	SV2B
Synonyms:	HsT19680
Mammalian Cell Selection:	None
Vector:	pLenti-C-Myc-DDK (PS100064)
E. coli Selection:	Chloramphenicol (34 ug/mL)
ORF Nucleotide Sequence:	The ORF insert of this clone is exactly the same as(RC230240).
Restriction Sites:	SgfI-MluI
Cloning Scheme:	

Cloning sites used for ORF Shuttling:



* The last codon before the Stop codon of the ORF.

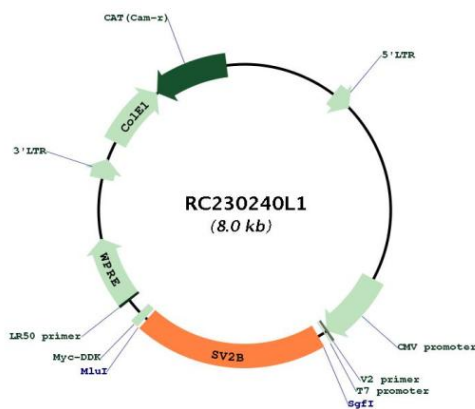
ACCN:	NM_001167580
ORF Size:	1596 bp



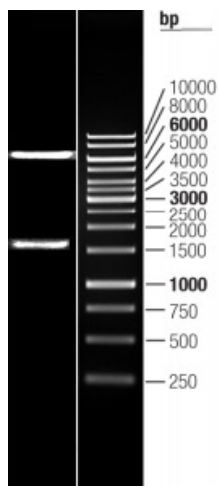
[View online »](#)

OTI Disclaimer:	The molecular sequence of this clone aligns with the gene accession number as a point of reference only. However, individual transcript sequences of the same gene can differ through naturally occurring variations (e.g. polymorphisms), each with its own valid existence. This clone is substantially in agreement with the reference, but a complete review of all prevailing variants is recommended prior to use. More info
OTI Annotation:	This clone was engineered to express the complete ORF with an expression tag. Expression varies depending on the nature of the gene.
Components:	The ORF clone is ion-exchange column purified and shipped in a 2D barcoded Matrix tube containing 10ug of transfection-ready, dried plasmid DNA (reconstitute with 100 ul of water).
Reconstitution Method:	<ol style="list-style-type: none">1. Centrifuge at 5,000xg for 5min.2. Carefully open the tube and add 100ul of sterile water to dissolve the DNA.3. Close the tube and incubate for 10 minutes at room temperature.4. Briefly vortex the tube and then do a quick spin (less than 5000xg) to concentrate the liquid at the bottom.5. Store the suspended plasmid at -20°C. The DNA is stable for at least one year from date of shipping when stored at -20°C.
RefSeq:	NM_001167580.1
RefSeq Size:	10788 bp
RefSeq ORF:	1599 bp
Locus ID:	9899
UniProt ID:	Q7L112
Cytogenetics:	15q26.1
Protein Families:	Secreted Protein, Transmembrane
Protein Pathways:	ECM-receptor interaction
MW:	60.4 kDa
Gene Summary:	This gene encodes a member of the synaptic vesicle proteins 2 (SV2) family and major facilitator superfamily of proteins. This protein and other members of the family are localized to synaptic vesicles and may function in the regulation of vesicle trafficking and exocytosis. Studies in mice suggest that the encoded protein may act as a protein receptor for botulinum neurotoxin E in neurons, and that this protein may be important for the integrity of the glomerular filtration barrier. This gene shows reduced expression in areas of synaptic loss in the hippocampus of human temporal lobe epilepsy patients. [provided by RefSeq, Sep 2016]

Product images:



Circular map for RC230240L1



Double digestion of RC230240L1 using SgfI and MluI