

Product datasheet for **RC230226**

PCTAIRE2 (CDK17) (NM_001170464) Human Tagged ORF Clone

Product data:

Product Type:	Expression Plasmids
Product Name:	PCTAIRE2 (CDK17) (NM_001170464) Human Tagged ORF Clone
Tag:	Myc-DDK
Symbol:	PCTAIRE2
Synonyms:	PCTAIRE2; PCTK2
Mammalian Cell Selection:	Neomycin
Vector:	pCMV6-Entry (PS100001)
E. coli Selection:	Kanamycin (25 ug/mL)



[View online »](#)

ORF Nucleotide Sequence:

>RC230226 representing NM_001170464
 Red=Cloning site Blue=ORF Green=Tags(s)

TTTTGTAATACGACTCACTATAGGGCGGCCGGAATTCGTCGACTGGATCCGGTACCGAGGAGATCTGCC
 GCC**CGGATCGCC**

ATGAAAAATTTAAGAGAAGGCTATCCCTCACACTCCGAGGAAGTCAGACTATTGATGAATCATTGTCTG
 AATTGGCTGAACAAATGACTATTGAAGAAAACAGCAGCAAGGATAATGAGCCTATTGTGAAGAATGGCAG
 GCCTCCAACGCTCACAGTATGCATTCTTCTCCACCAGTACACAGGATCTTCAAGAAGCCCCATTG
 CGGAGACCACACAGTGTTATTGGAGGGAGCCTTGGCTCCTTCATGGCAATGCCAGAAATGGAAGCAGAT
 TAGATATTGTTTCATGAAAATCTAAAAATGGGATCAGATGGTGAGAGTGACCAAGCTTCTGGGACATCATC
 TGATGAAGTCCAGTCACCTACAGGTGTTTGTCTCAGAAATCGTATACATAGACGGATCTCAATGGAGGAT
 TTAATAAGCGGTTATCACTGCCTGCAGACATCAGAATACCTGATGGATATCTTGAAAAGTTGCAGATAA
 ACAGTCCACCATTGACCAACCAATGAGTCGAAGGTCTCGTAGAGCTTCTTATCAGAAAATGGCTTTGG
 AAAAATGGAACCTACATCAAATTTGAAAAGCTTGGAGAGGTACATATGCAACAGTATATAAAGGAAGA
 AGTAAATTGACAGAGAATTTGGTGGCATTAAAAGAGATCCGATTGGAACATGAAGAAGGTGCACCCTGCA
 CAGCTATAAGAGAAGTTTCACTATTAAGGATTTAAAACATGCAATATAGTAACCTTACATGACATTGT
 TCACACAGATAAATCCTTGACTTTGGTGTGTTGAGTATCTGGATAAAGACCTGAAACAGTACATGGATGAC
 TGTGGAACATCATGAGTATGCACAACGTAAGGCTGTTTCTGTACCAAATCTACGTGGTTTGGCATATT
 GCCATAGAAGAAAGGATTGTCATCGAGACTTGAACCACAGAACCTCCTCATTATGAGAAAAGGAGAATT
 AAAGCTAGCAGATTTGGACTAGCCCGAGCCAAGTCAGTCCCACAAAGACCTACTCAAATGAAGTTGTC
 ACACTATGGTACCGGCCACCTGATGTGCTTCTTGGTTCCTCGGAGTACTCAACACAGATTGACATGTGGG
 GTGTTGGTTGCATTTTCTTGAATGGCTTCTGGAAGACCTTTATTTCCAGGATCAACCGTGAAGATGA
 ACTGCACTTAATTTTCCGACTGCTAGGAACTCCATCTCAGGAACTTGGCCAGGATTTTCTCAAATGAG
 GAGTTCAAGAACTACAATTTCCAAAATAAAACCACAGCCTCTAATTAACCACGCACCCAGGTTAGACT
 CTGAAGGAATTGAGTTGATAACAAAATTTCTTCAAGTATGAATCTAAGAAAAGGGTTTCAAGTGAAGAGGC
 CATGAAACATGTACTTTCAAGTCTGGGACCAAGAATACATGCTTTACCAGAAAAGTGTATCAATATTC
 AGTTTGAAGAGATTGAGTTGAAAAGGACCCGGGTTTTCGAAATTTCTTATCCAGAGACAGGTGTGT
 TTGTCATAAACCATTTACAGTGTGATCA

ACGCGTACGCGGCCGCTCGAGCAGAAACTCATCTCAGAAGAGGATCTGGCAGCAAATGATATCCTGGATT
 ACAAGGATGACGACGATAAGGTTTAA

Protein Sequence:

>RC230226 representing NM_001170464
 Red=Cloning site Green=Tags(s)

MKKFKRRLSLTLRGSQTIDESLSELAEQMTIEENSCKDNEPIVKNRPPPTSHSMHSLFHQYTGSAFKKPPPL
 RRPHSVIGGSLGFSMAMPRNGSRDLIVHENLKMGSDESQASGTSSDEVQSPTGVCLRNRIHRRISMED
 LNKRLSLPADIRIPDGYLEKLQINSPPFDQPMRRRSLSEIGFGKMETYIKLEKLGEGTYATVYKGR
 SKLTENLVALKEIRLEHEEGAPCTAIREVSLKDLKHANIVTLHDIVHTDKSLTLVFEYLDKDLKQYMD
 CGNIMSMHNVKFLYQILRGLAYCHRRKVLHRDLKPQNLLINEKELKLADFLARAKSVPTKTYSEV
 TLWYRPPDVLLGSSEYSTQIDMWGVGCIFFEMASGRPLFPGSTVEDELHLIFRLLGTPSQETWPGISSNE
 EFKNYNFPKYKQPLINHAPRLDSEGIELITKFLQYESKKRVSAEAMKHVYFRSLGPRIHALPESVSIF
 SLKEIQLQKDPGFRNSSYPETGVFVINHFTCRS

TRTRPLEQKLISEEDLAANDILDYKDDDDKV

Chromatograms:

https://cdn.origene.com/chromatograms/mk8065_d05.zip

Restriction Sites:

SgfI-MluI

Cloning Scheme:



ACCN: NM_001170464

ORF Size: 1569 bp

OTI Disclaimer: The molecular sequence of this clone aligns with the gene accession number as a point of reference only. However, individual transcript sequences of the same gene can differ through naturally occurring variations (e.g. polymorphisms), each with its own valid existence. This clone is substantially in agreement with the reference, but a complete review of all prevailing variants is recommended prior to use. [More info](#)

OTI Annotation: This clone was engineered to express the complete ORF with an expression tag. Expression varies depending on the nature of the gene.

Components: The ORF clone is ion-exchange column purified and shipped in a 2D barcoded Matrix tube containing 10ug of transfection-ready, dried plasmid DNA (reconstitute with 100 ul of water).

- Reconstitution Method:
1. Centrifuge at 5,000xg for 5min.
 2. Carefully open the tube and add 100ul of sterile water to dissolve the DNA.
 3. Close the tube and incubate for 10 minutes at room temperature.
 4. Briefly vortex the tube and then do a quick spin (less than 5000xg) to concentrate the liquid at the bottom.
 5. Store the suspended plasmid at -20°C. The DNA is stable for at least one year from date of shipping when stored at -20°C.

RefSeq: [NM_001170464.3](#)

RefSeq ORF: 1572 bp

Locus ID: 5128

UniProt ID: [Q00537](#)

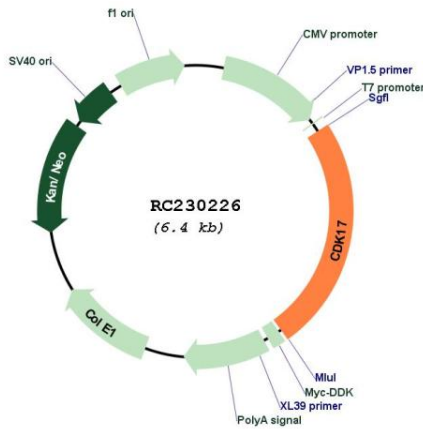
Cytogenetics: 12q23.1

Protein Families: Druggable Genome, Protein Kinase

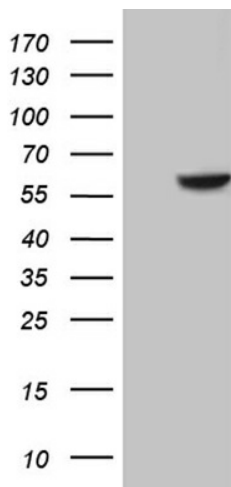
MW: 60 kDa

Gene Summary: The protein encoded by this gene belongs to the cdc2/cdkx subfamily of the ser/thr family of protein kinases. It has similarity to a rat protein that is thought to play a role in terminally differentiated neurons. Alternatively spliced transcript variants encoding different isoforms have been found. [provided by RefSeq, Jul 2010]

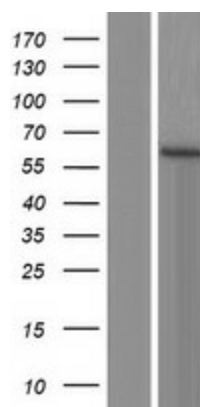
Product images:



Circular map for RC230226



HEK293T cells were transfected with the pCMV6-ENTRY control (Cat# [PS100001], Left lane) or pCMV6-ENTRY CDK17 (Cat# RC230226, Right lane) cDNA for 48 hrs and lysed. Equivalent amounts of cell lysates (5 ug per lane) were separated by SDS-PAGE and immunoblotted with anti-CDK17 (Cat# [TA809694]). Positive lysates [LY433226] (100ug) and [LC433226] (20ug) can be purchased separately from OriGene.



Western blot validation of overexpression lysate (Cat# [LY433226]) using anti-DDK antibody (Cat# [TA50011-100]). Left: Cell lysates from untransfected HEK293T cells; Right: Cell lysates from HEK293T cells transfected with RC230226 using transfection reagent MegaTran 2.0 (Cat# [TT210002]).